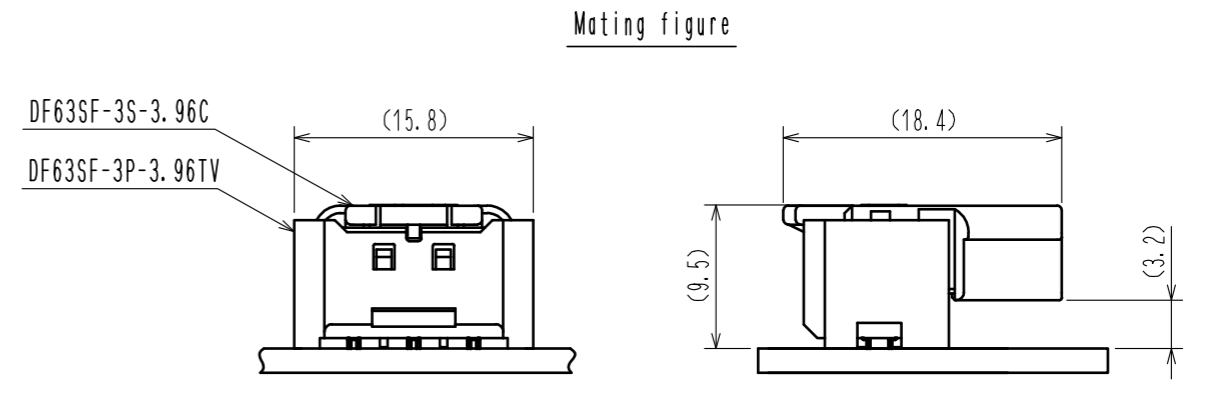
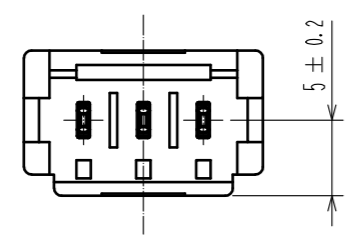
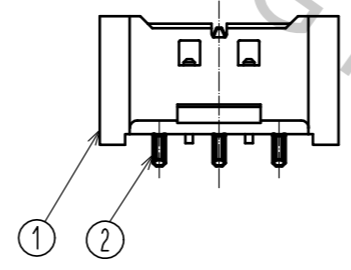
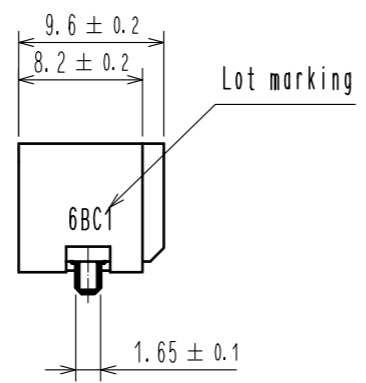
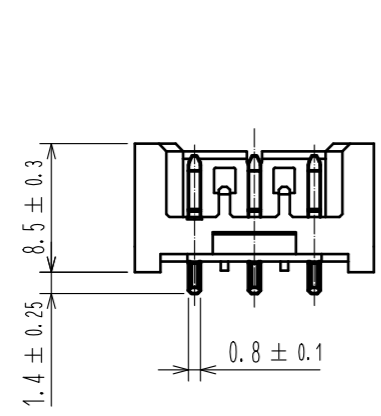
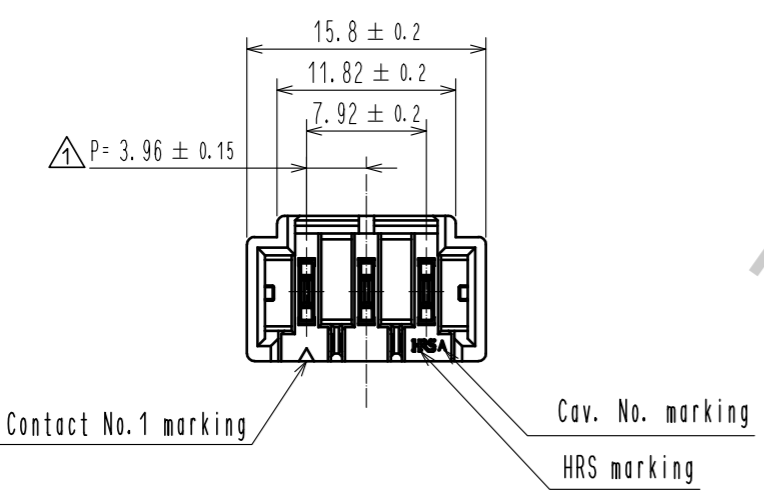
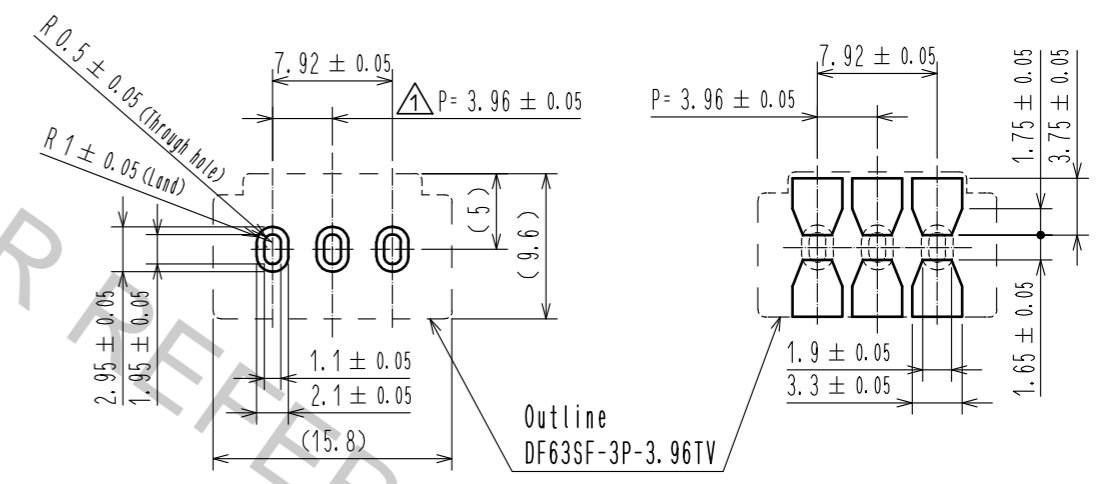


Nov.1.2017 Copyright 2017 HIROSE ELECTRIC CO., LTD. All Rights Reserved.



Recommended Pattern
Recommended Board Thickness (t=1.6mm)

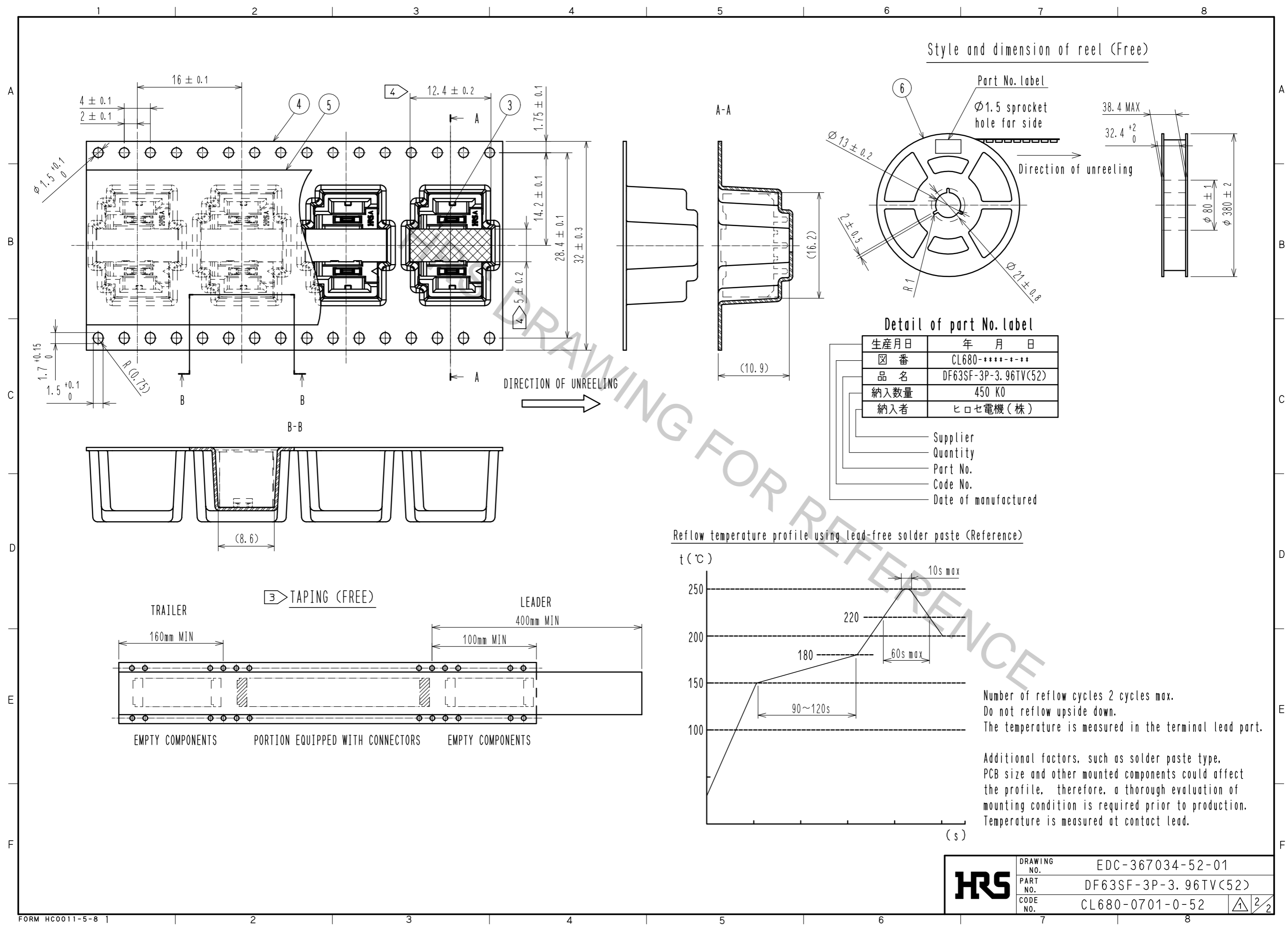
Recommended metal mask
(Thickness : 0.15mm)



- Note 1. 1 reel : 450 connectors
 2. The dimensions in parentheses are for reference.
 3. Reel to JIS C 0806. (Packaging of components for automatic handling)
 4. The dimensions are Vacuum area

3	PA	UL94V-0(BLACK)	6	PS	Reel . Black		
2	Copper alloy	Surface : Au plating 0.76 μm MIN Under plating : Nickel plating 0.5 μm MIN	5	Polyester	Clear [Cover tape]		
1	LCP	UL94V-0(BLACK)	4	PS	Clear [Embossed carrier tape]		
NO.	MATERIAL	FINISH . REMARKS	NO.	MATERIAL	FINISH . REMARKS		
UNITS mm		SCALE 2 : 1	COUNT 2	DESCRIPTION OF REVISIONS DIS-H-00002832	DESIGNED SZ. ONO	CHECKED ST. WADA	DATE 17. 05. 18
HRS HIROSE ELECTRIC CO., LTD.		APPROVED : HS. OKAWA 16. 12. 09	DRAWING NO. EDC-367034-52-01				
		CHECKED : YN. TAKASHITA 16. 12. 08	PART NO. DF63SF-3P-3. 96TV(52)				
		DESIGNED : SANGMUK. LIM 16. 12. 08	CODE NO. CL680-0701-0-52				
		DRAWN : SANGMUK. LIM 16. 12. 08					

Nov.1.2017 Copyright 2017 HIROSE ELECTRIC CO., LTD. All Rights Reserved.

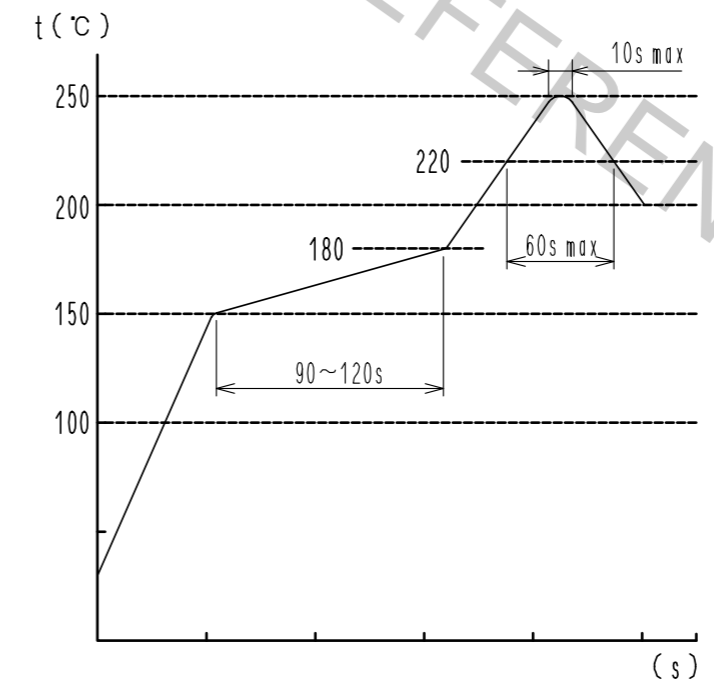


Detail of part No. label

生産月日	年月日
図番	CL680-****-***
品名	DF63SF-3P-3.96TV(52)
納入数量	450 KO
納入者	ヒロセ電機(株)

Supplier
Quantity
Part No.
Code No.
Date of manufactured

Reflow temperature profile using lead-free solder paste (Reference)



Number of reflow cycles 2 cycles max.
Do not reflow upside down.
The temperature is measured in the terminal lead part.

Additional factors, such as solder paste type, PCB size and other mounted components could affect the profile, therefore, a thorough evaluation of mounting condition is required prior to production. Temperature is measured at contact lead.

HRS	DRAWING NO.	EDC-367034-52-01
	PART NO.	DF63SF-3P-3.96TV(52)
	CODE NO.	CL680-0701-0-52
		2/2