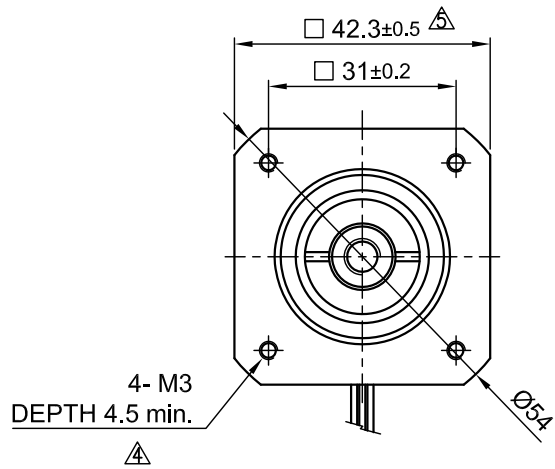
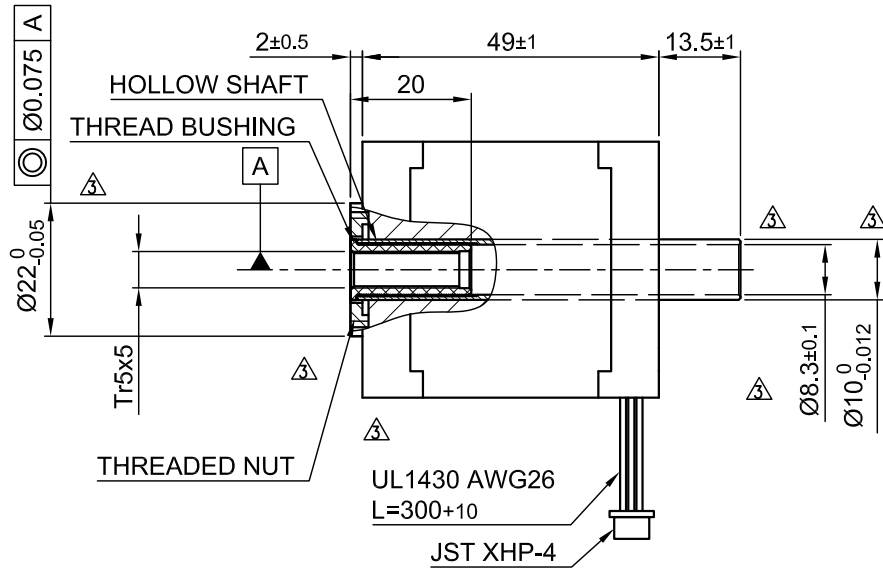


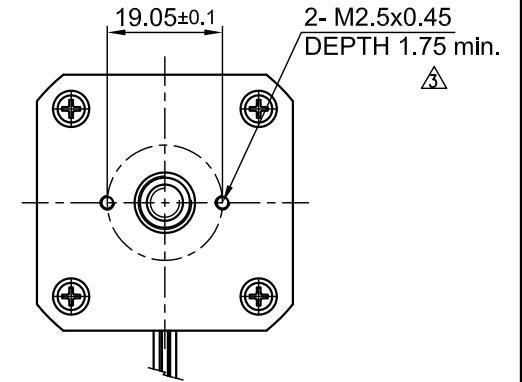
Front view and mounting



Side view



Rear view



| SPECIFICATION | |
|--|--|
| AMPS/PHASE | 1.8 |
| RESISTANCE/PHASE (Ohms)@25°C | 1.75±15% |
| INDUCTANCE/PHASE (mH) @1KHz | 3.3±20% |
| SPINDLE PITCH (mm) [in] | 5 [0.197] |
| THRUST (N) | 250 ▲ ▲ |
| RESOLUTION (mm/STEP) | 0.025 |
| STATIC THRUST (N) (NO CURRENT) | 40 ▲ |
| MAX. SPEED (mm/sec.) AT 48V | 60 ▲ ▲ |
| WEIGHT (Kg) [lb] | 0.34 [0.75] |
| TEMPERATURE RISE: MAX.80°C (MOTOR STANDSTILL; FOR 2 PHASE ENERGIZED) | |
| AMBIENT TEMPERATURE -10~ 50°C [14°F ~ 122°F] | |
| INSULATION RESISTANCE 100 MOhm (UNDER NORMAL TEMPERATURE AND HUMIDITY) | |
| INSULATION CLASS B 130° [266°F] | |
| DIELECTRIC STRENGTH 500VAC FOR 1 MIN. (BETWEEN THE MOTOR COILS AND THE MOTOR CASE) | |
| AMBIENT HUMIDITY MAX. 85% (NO CONDENSATION) | |

Please regard the application note at www.nanotec.com for further informations. ▲

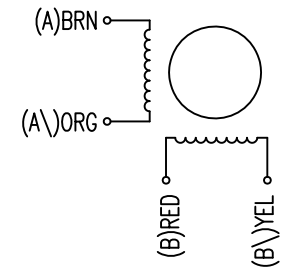
Shaft play is adjustable at the motor.

| TYPE OF CONNECTION (EXTERN) | | MOTOR | |
|-----------------------------|---------|-------|---------|
| PIN NO | BIPOLAR | LEADS | WINDING |
| 1 | A — | BRN | A |
| 2 | A\ — | ORG | A\ |
| 3 | B — | RED | B |
| 4 | B\ — | YEL | B\ |

FULL STEP 2 PHASE-Ex., WHEN FACING MOUNTING END (X)

| STEP | A | B | A\ | B\ | | CCW |
|------|---|---|----|----|---|-----|
| 1 | + | + | - | - | ↓ | ↑ |
| 2 | - | + | + | - | | |
| 3 | - | - | + | + | ↑ | ↓ |
| 4 | + | - | - | + | | |

WIRING DIAGRAM



| | | | | | | | | | | |
|--------|----------------------------------|----------|------|---|--|----------------------------------|-----------|------------------------|----------|---------------------------|
| 5 | change tolerance | 14.09.16 | A.S. | Nanotec [®] PLUG & DRIVE | APVD | S.H. | 04.06.09 | LINEAR ACTUATOR | | |
| 4 | change tolerance M3 deep | 09.09.15 | A.S. | | CHKD | | | | | |
| 3 (7x) | change threaded hole/ tolerances | 16.07.15 | A.S. | Surface specification DIN ISO 1302 | General tolerances DIN ISO 2768- cH | Work piece edge DIN ISO 13715 | DRN | J.W. | 04.06.09 | DWG.NO L4118L1804-T5x5 |
| REV | DESCRIPTION | DATE | DRN | | | | SIGNATURE | DATE | | |