

THIRD ANGLE PROJ.

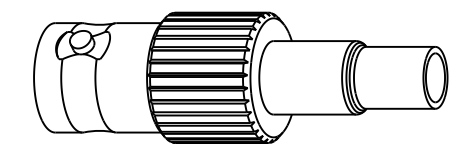
REVISIONS

REV	DESCRIPTION	DATE	ECO	APPR
A	RELEASE TO MFG.	10-Jul-17	04322	BMG

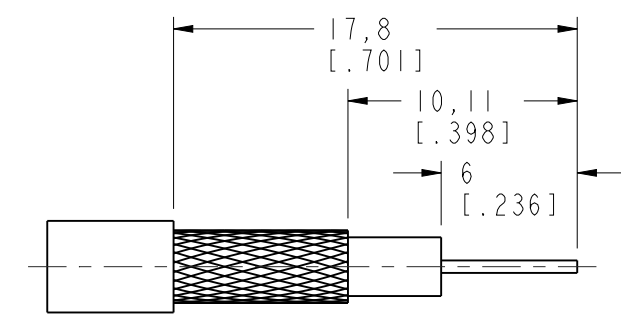
- NOTES:
- MATERIALS AND FINISHES:  
 BODY - BRASS, NICKEL PLATING  
 CONTACT PIN - PHOSPHOR BRONZE, GOLD PLATING  
 INSULATOR - PTFE, NATURAL  
 LOCK RING - BRASS, GOLD PLATING  
 FERRULE - COPPER, NICKEL PLATING
  - ELECTRICAL:  
 A. IMPEDANCE: 75 OHM  
 B. FREQUENCY RANGE: DC - 12 GHz  
 C. RETURN LOSS (VSWR): 20dB (1.22) DC-6GHz  
 15dB (1.43) 6-12GHz  
 D. DIELECTRIC WITHSTANDING VOLTAGE: 1500 VRMS, MIN.
  - MECHANICAL:  
 A. DURABILITY: 500 CYCLES MIN.  
 B. TEMPERATURE RANGE: -65°C TO +85°C
  - CRIMPED FERRULE  
 HEX. CRIMP SIZE .213"
  - CONTACT PIN TO SOLDER

SHOWS CABLE ENTRY DIMENSIONS

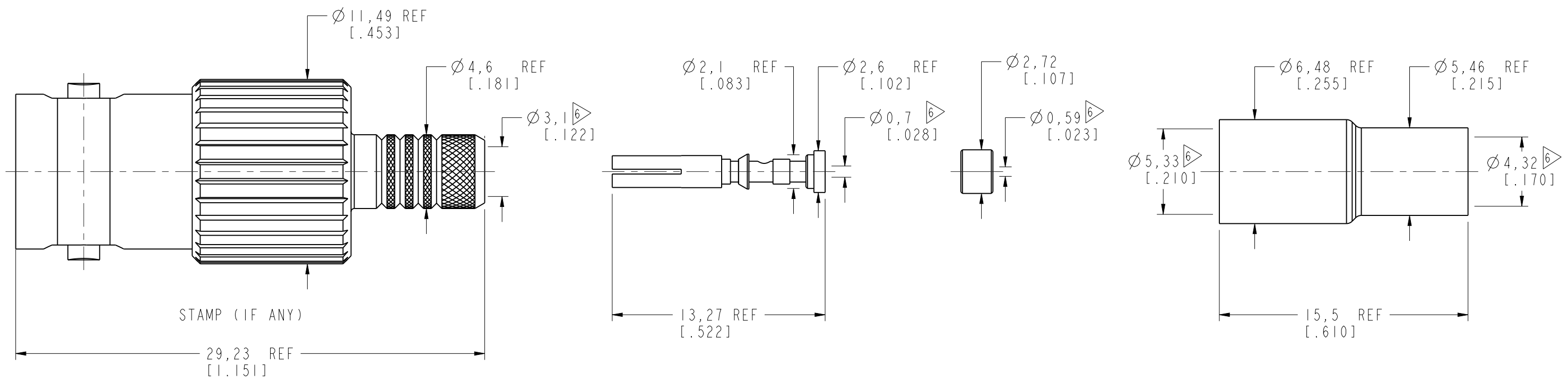
- PACKAGING:  
 A. QUANTITY: SINGLE PACK  
 B. BAG TO BE MARKED: AMPHENOL RF  
 31-70538-12G  
 YYWW



SCALE 1.500



**RECOMMENDED  
CABLE STRIPPING DIMENSIONS**



**CUSTOMER OUTLINE DRAWING**  
ALL OTHER SHEETS ARE FOR INTERNAL USE ONLY

UNLESS OTHERWISE SPECIFIED, DIMENSIONS ARE IN METRIC AND TOLERANCES ARE:  
 <0.5mm ±0.05mm    0.5 - 6mm ±0.1mm    6 - 30mm ±0.2mm    30 - 120mm ±0.3mm    ANGLES ±1°

NOTICE - These drawings, specifications, or other data (1) are, and remain the property of Amphenol corp. (2) must be returned upon request; and (3) are confidential and not to be disclosed to any person other than those to whom they are given by Amphenol Corp. the furnishing of these drawings, specifications, or other data by Amphenol Corp., or to any other person to anyone for any purpose is not to be regarded by implication or otherwise in any manner licensing, granting rights to permitting such holder or any other person to manufacture, use or sell any product, process or design, patented or otherwise, that may in any way be related to or disclosed by said drawings, specifications, or other data.

MATERIAL	SEE NOTES	DRAWN	S. DUAN	DATE	11-Jul-17	TITLE	BNC CRIMP JACK FOR BELDEN 4855R CABLE	Amphenol RF www.amphenolrf.com
REFERENCE	EAR# 7619	ENGINEER	B. GREENBAUM	DATE	03-Apr-17			
REF:		APPROVED	K. CAPOZZI	DATE	11-Jul-17	SCALE: 4.0:1.0	SHEET 2 OF 2	DRAWING NO. 31-70538-12G
CONFIGURATION LEVEL:	In Work	CAD FILE				DWG SIZE	B	ITEM NO. 31-70538-12G
FINISH						REV	B	PART NO. 31-70538-12G