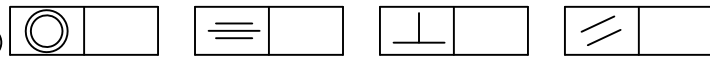


GENERAL TOLERANCE : ± 0.3
(.011)



MEPLAT
(FLAT)

SPECIFICATIONS

• **CONSTRUCTION**

Miniature pushbutton switch. Two poles. Solder lug terminals.
Sealed by external and internal gaskets. Stronger spring.
Hat glued on the plunger.

• **MATERIALS**

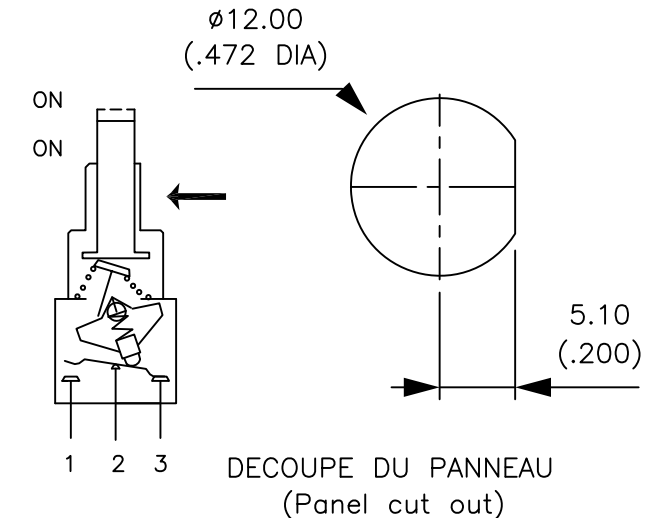
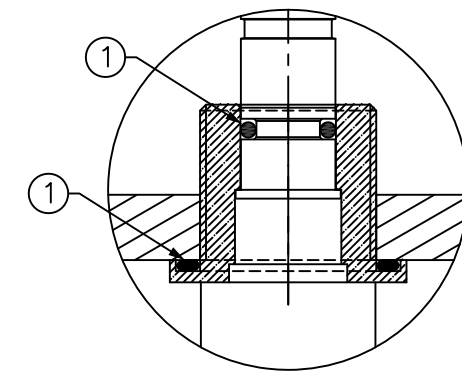
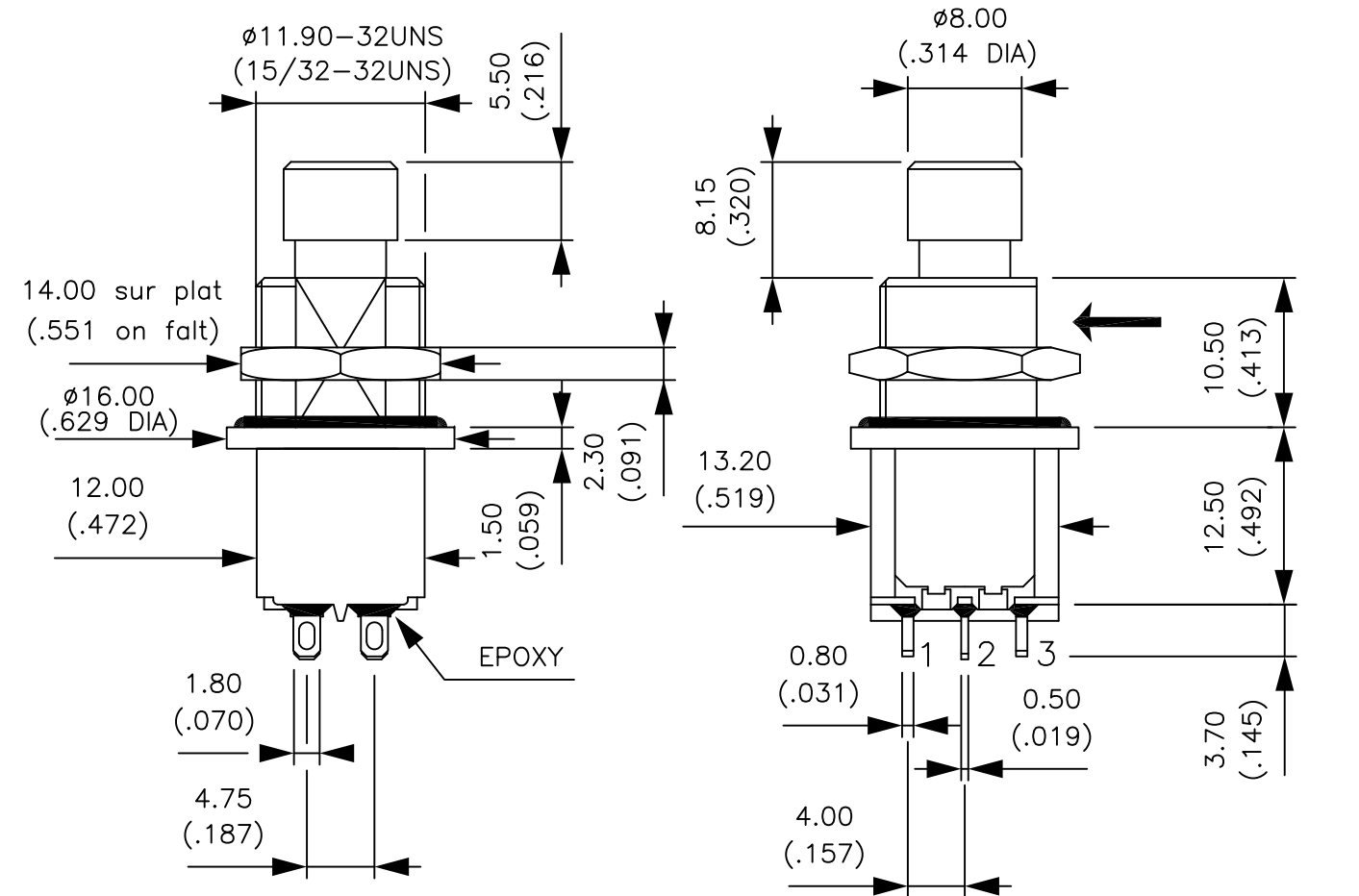
Case : Diallyl phthalate (DAP)
Contacts : Silver
Plunger : Brass, nickel plated
Housing : Stainless steel
Bushing : Brass, nickel plated
Terminal Seal : Epoxy

• **ELECTRICAL CHARACTERISTICS**

Electrical function : ON - ON
Maximum ratings : 4A 30VDC
Electrical life : 30 000 cycles
Initial Contact resistance: 10 milliohms Max
Insulation resistance : 1000 Megaohms min - 500 VDC
Dielectric strength : 1000 Vrms 50Hz between terminals
2000 Vrms 50Hz between terminals and frame


• **MECHANICAL AND ENVIRONMENTAL CHARACTERISTICS**

Mechanical life : 30 000 cycles
Temperature range : -40°C to +85°C
Total travel : 2.70mm (.106)
Sealing : IP67 front panel
Torque : 1.25Nm (.922 Ft.lb) max applied to nut
Panel thickness : 7.5 mm (.295) max.



① Gasket

Note : Nuts and gasket supplied unmounted.

				MATERIAL:		 55, av. E. HERRIOT BP 1 82303 CAUSSADE CEDEX Tél. 05.63.93.14.98 - Télécopie. 05.63.93.19.03	DRAWN: F. RICARD	
				TREATMENT:			DATE : 14/02/1996	
				FINISH:			CHECKED: J. POUSSOU	
				Scale: 2			Reference D08022S	
				Scale: 2		Series 8000		
				MINIATURE PUSHBUTTON SWITCH 8646AB-6 X923				
A	Evolution en datasheet	21.12.17	MAURI					
Issue	Modifications	Date	Name					

This document is the property of APEM and may not be copied or used for any purpose without written authority. Dimensions and data shown in this specification are subject to change without notice.