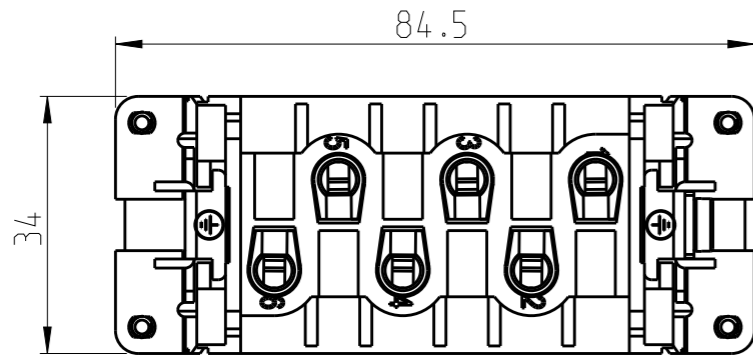


THIS DRAWING IS UNPUBLISHED. RELEASED FOR PUBLICATION 20
 © COPYRIGHT 20 BY - ALL RIGHTS RESERVED.

REVISIONS

P	LTR	DESCRIPTION	DATE	DWN	APVD
A		INITIAL	25FEB2015	GY	CW
B		ECR-15-017607	03DEC2015	GY	CW



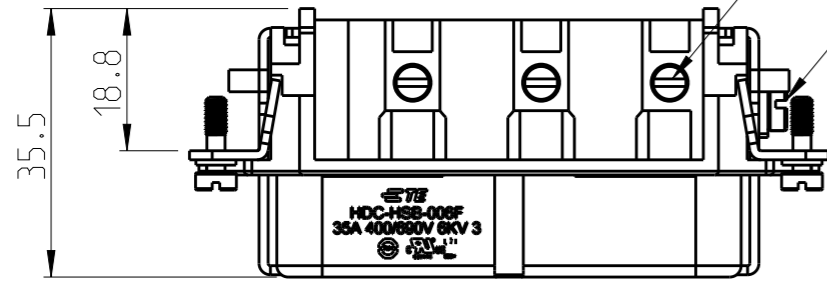
6 X M4 thread, recommended tightening torque 1.2Nm

NOTES:

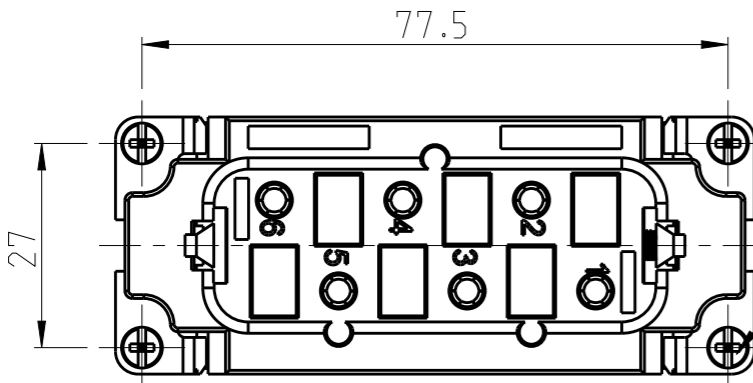
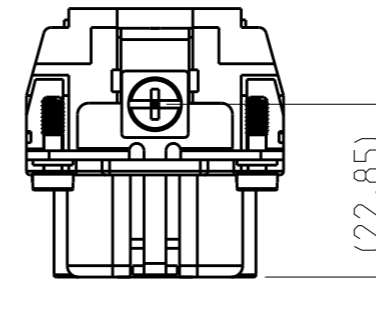
1. TECHNICAL CHARACTERISTICS:
 INSULATION MATERIAL: PC(Gray)
 RATED VOLTAGE: CONDUCTOR-GROUND: 400V
 CONDUCTOR-CONDUCTOR: 690V
 RATED CURRENT: 35A
 INSULATION RESISTANCE: >=400MΩ
 RATED IMPULSE VOLTAGE: 6KV
 POLLUTION DEGREE: 3
 CONTACT RESISTANCE: <=5mΩ
 FLAMMABILITY: UL94V-0
 MATING CYCLES: 500
 OPERATION TEMPERATURE: -40°C~+125°C
 WIRE RANGE: 1.5mm²~6.0mm² (AWG16-AWG10)
 CONTACT FINISH: SILVER PLATED
 CONTACT TYPE: SCREW CLAMP (M4)

注释:

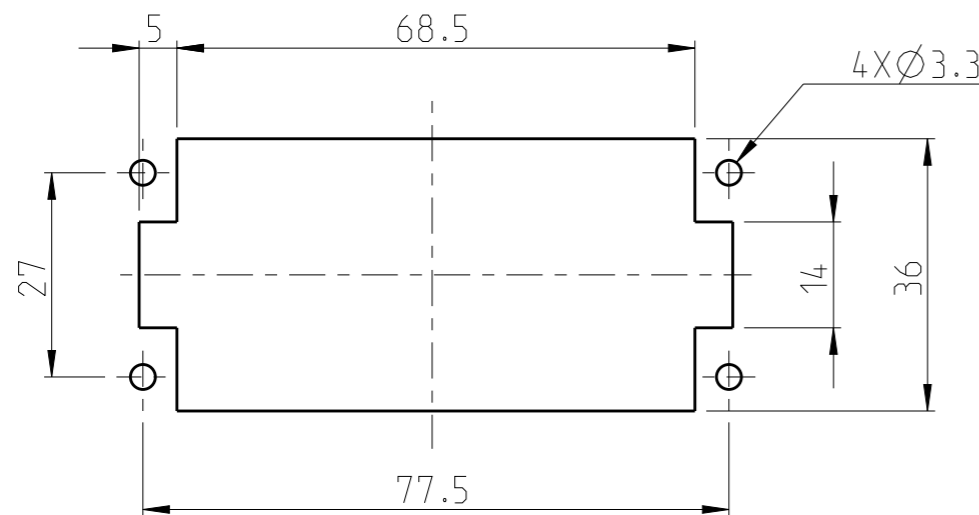
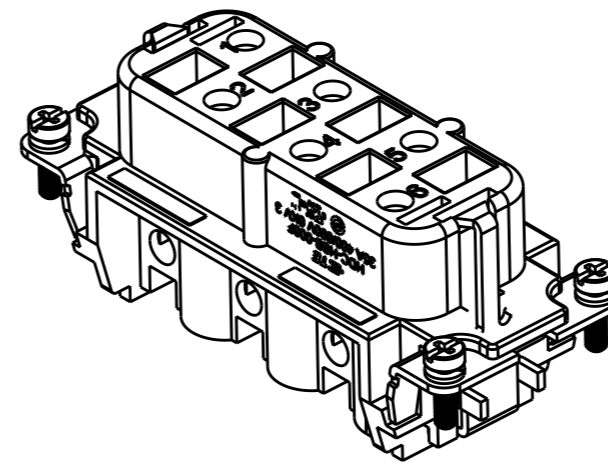
1. 技术参数:
 绝缘材料: PC(Gray)
 额定电压: 导体-地: 400V
 导体-导体: 690V
 额定电流: 35A
 绝缘电阻: >=400MΩ
 脉冲电压: 6KV
 污染等级: 3
 接触电阻: <=5 mΩ
 阻燃等级: UL94V-0
 插拔次数: 500
 工作温度: -40°C~+125°C
 接线范围: 1.5mm²~6.0mm² (AWG16-AWG10)
 端子表面处理: 镀银
 接线类型: 螺丝压接 (M4)



M4 thread, recommended tightening torque 1.2Nm




4 X M3 thread, recommended tightening torque 0.5Nm



Panel cut out for inserts for using without hoods/housings

HSB-006-F	T20600062201-000
DESCRIPTION	PART NUMBER

THIS DRAWING IS A CONTROLLED DOCUMENT.		DWN	Gino.Yao	10Dec2014	 TE Connectivity	NAME	HSB-006-F			
DIMENSIONS: mm		CHK	Chris.Wang	10Dec2014			PRODUCT SPEC	108-137052		
TOLERANCES UNLESS OTHERWISE SPECIFIED:		APVD	Xiang.Xu	10Dec2014				APPLICATION SPEC	114-137052	
0 PLC ± 1 PLC ± 2 PLC ± 3 PLC ± 4 PLC ± ANGLES ±		MATERIAL	-				WEIGHT		-	
Customer Drawing		SCALE	1:1		SHEET	1 OF 1		REV	B	