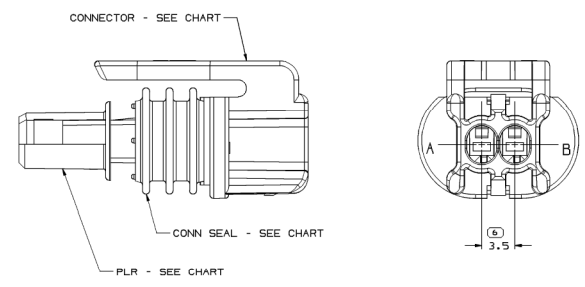
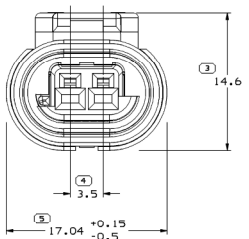
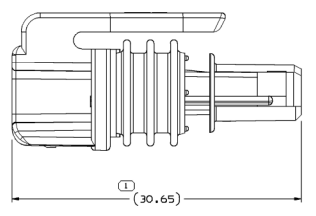
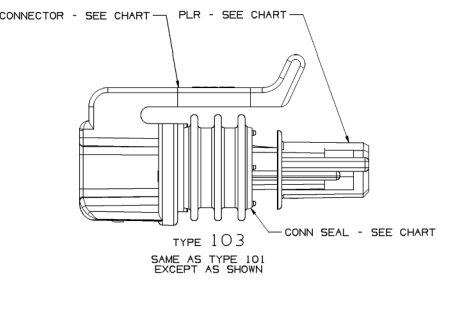
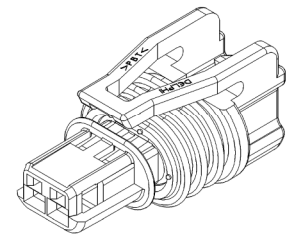
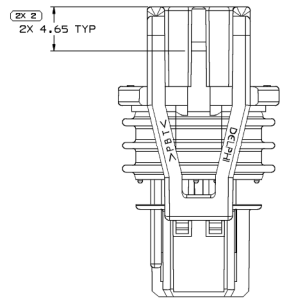
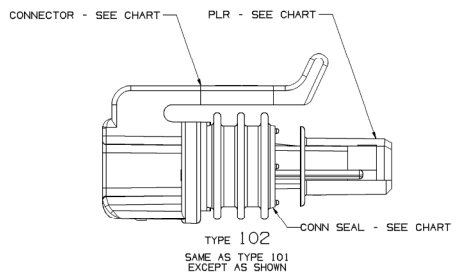
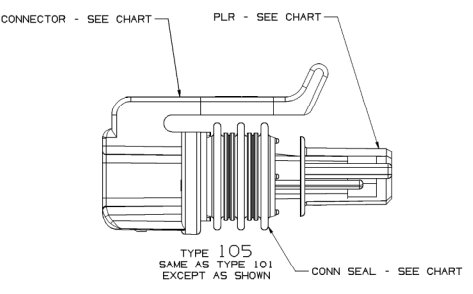
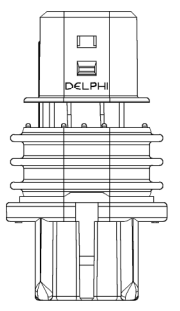
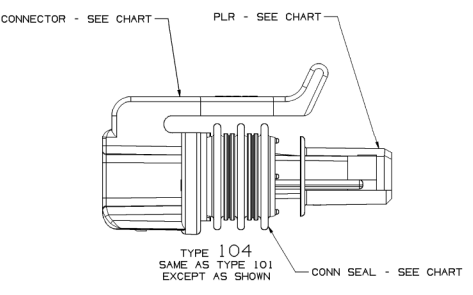


SYMBOL DEFINITION		MISSING SYMBOLS	
A DIMENSION WITHOUT AN INSPECTION REPORT SYMBOL ( ) DOES NOT REQUIRE INSPECTION. IT MAY BE CONTROLLED ON THE INDIVIDUAL COMPONENT DRAWING.	TOTAL NO OF INSPECTIONS REQUIRED	7	NO MISSING SYMBOL NUMBER
	LAST NO. USED	6	

DATE	REV	IN/P	CHG	ZONE	REVISION HISTORY	AUTH	DR	APP/DR
030C02	R	01	-	-	ALL PARTS - RELEASED	231066	JAN	FR6/MSD
160E02	R	02	-	-	ALL PARTS - UPDATED PWM ATTRIBUTES	234651	FLD	TL0/MSD
12M003	R	03	-	-	ALL PARTS - RELEASED	240904	C.P.C.	J.P. CD
02FE04	R	04	-	-	15487232 - RELEASED ALL PARTS - UPDATED ASM	250348	MAC	MAC/LIN
14AP04	R	05	-	-	REVISED 15487232 - PLR WAS 15335989	254551	LLJ	LLJ/LIN
20AP04	R	06	-	-	15487232 - MATING CONFIG. WAS 15336018	254217	ADK	ADK/LIN
07JN04	R	07	-	-	ADDED TYPE 105	255733	LLJ	LLJ/LIN
16AU04	R	08	-	-	TOLERANCE ON DIM #5 WAS ±0.15	258892	AKJ	AKJ/LIN
040C04	R	09	-	-	ALL PARTS - ADDED CAVITY PLUG TO NOTES: 15487232 WAS TYPE 104. 15497504 WAS TYPE 105. ADDED PARTS 13512969 AND 13512968 - RELEASED	259828	RH	RH/TV
08AP05	R	10	-	-	ALL PARTS - ADDED "SAE/USCAR" NOTE: REVISED MATING CONFIG. PART NUMBERS	266886	ADK	ADK/LIN
16MR06	R	11	-	-	1357140 & 1357141 - RELEASED	277700	C.P.C.	J.P.TAV
03AP07	R	12	-	-	15449028 - UPDATED PWM ATTRIBUTES	400955	RMG	FRG/USA
10DE10	R	13	-	-	13842193 - RELEASED ALL PARTS - ADDED ADHESIVE NOTE	412863	MEA	PRE/MEA
10SE12	R	14	-	-	REVISED GRAPHICS	417355	MSJ	SJ/AS
19SE12	R	15	-	-	13842193 - UPDATED THE USE OF ADHESIVE AND ADDED PART NUMBER WITH ADHESIVE COLUMN ON CHART	419083	JFF	SJ/JFF



TYPE 101



- NOTES
- UNLESS OTHERWISE SPECIFIED AND/OR INDICATED:  
DIMENSIONS ARE TO FACE OF VIEW SHOWN AND AUTOMATICALLY ROUNDED BY COMPUTER FOR INSPECTION (SEE MATH MODEL FOR PRECISE DIMENSIONS). FOR ALL OTHER DIMENSIONS NOT SHOWN BUT REQUIRED FOR TOOL BUILD, SEE MATH MODEL FOR PRECISE TOOL PATH DATA.
  - THIS PRODUCT IS NOT CATEGORIZED AS AN APPEARANCE ITEM, MINOR IMPERFECTIONS INCLUDING, BUT NOT LIMITED TO, FLOW MARKS, COLOR BLEMISHES, GATE VESTIGE, AND SOFT FLASH THAT DO NOT AFFECT THE FIT, FORM, OR FUNCTION OF THE PART ARE PERMISSIBLE PER DPNP-4.7-CS-01.
  - THIS CONNECTION MEETS OR EXCEEDS SAE/USCAR-2 MAY 2004, SECTION 5.4.1.4 TERMINAL DISENGAGE CRITERIA WITH THE APPLICATION OF A TERMINAL POSITION ASSURANCE (TPA) SECONDARY LOCK.
  - FOR PART NUMBER WITH ADHESIVE, USE M3510001 OR ADHESIVE APPROVED BY MATERIALS ENGINEERING TO GLUE CONNECTOR SEAL TO CONNECTOR.
  - FOR APPLICATION DATA SEE THE INDIVIDUAL APPLICATION DRAWINGS.

PART NO WITH ADHESIVE	REV	N/P	PART NO WITHOUT ADHESIVE	REV	N/P	TYPE	CONNECTOR	PLR	CONN SEAL
-	-	-	13577141	01	AA	105	15449024	15335989	13511248
-	-	-	13577140	01	AA	105	15487233	15335989	13511248
-	-	-	13512990	01	AB	104	15487233	15336006	13511248
-	-	-	13512989	01	AB	104	15449024	15336006	13511248
-	-	-	15497504	01	AD	103	15487233	15335989	12040750
-	-	-	15487232	02	AE	102	15487233	15336006	12040750
-	-	-	15449027	02	AF	103	15449024	15335989	12040750
-	-	-	15449028	02	AG	102	15449024	15336006	12040750
-	-	-	15449029	02	AF	101	15449025	15336006	12040750

DELPHI POWERTRAIN ELECTRICAL/ELECTRONIC ARCHITECTURE

THIS DOCUMENT IS IN ACCORDANCE WITH SAE J1455-1994 (REVISED 1998) AND SAE J1455-2000 (REVISED 2000). DIMENSIONS SHOWN ARE UNLESS OTHERWISE SPECIFIED. DIMENSIONS IN PARENTHESES ARE FOR INFORMATION ONLY. DIMENSIONS IN PARENTHESES ARE FOR INFORMATION ONLY. DIMENSIONS IN PARENTHESES ARE FOR INFORMATION ONLY. DIMENSIONS IN PARENTHESES ARE FOR INFORMATION ONLY.

UNLESS OTHERWISE SPECIFIED:  
ALL DIMENSIONS ARE IN MILLIMETERS

DATE: 030C02  
REV: 02  
AUTH: JOSE HDEZ NOVOA  
DR: EDO. RESENDIZ  
APP: MATTHEW BRUMBACH

THIS DRAWING IS THE PROPERTY OF DELPHI. NO REPRODUCTION, DISTRIBUTION OR APPLICATION OF THIS DOCUMENT IS TO BE MADE WITHOUT THE WRITTEN PERMISSION OF DELPHI. ALL RIGHTS RESERVED.

DELPHI PART NUMBER: 15449030

DESCRIPTION: TAXI ASM CONN F 6T 150 SLD

SCALE: 1 OF 1

DATE: 15449030