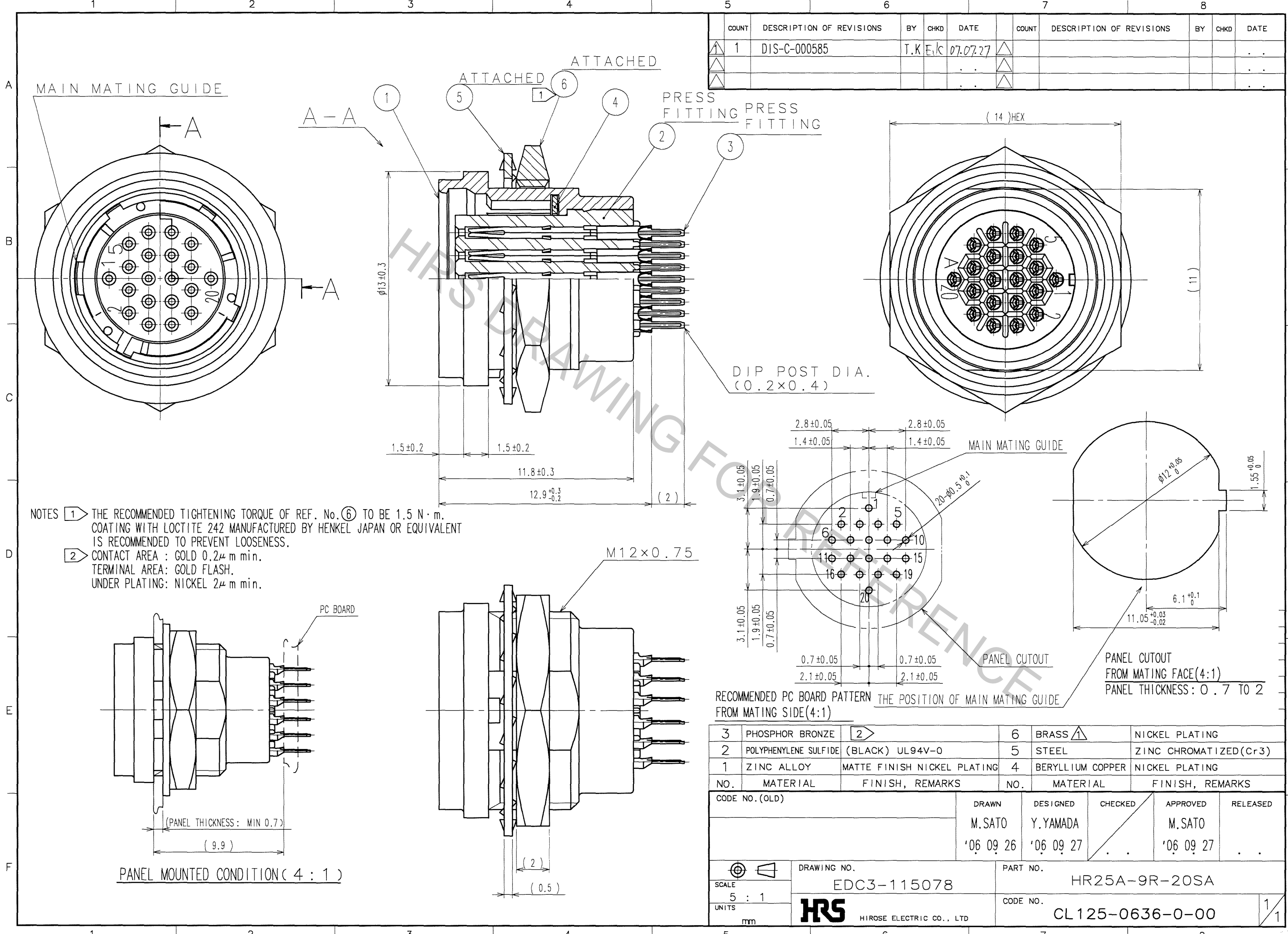
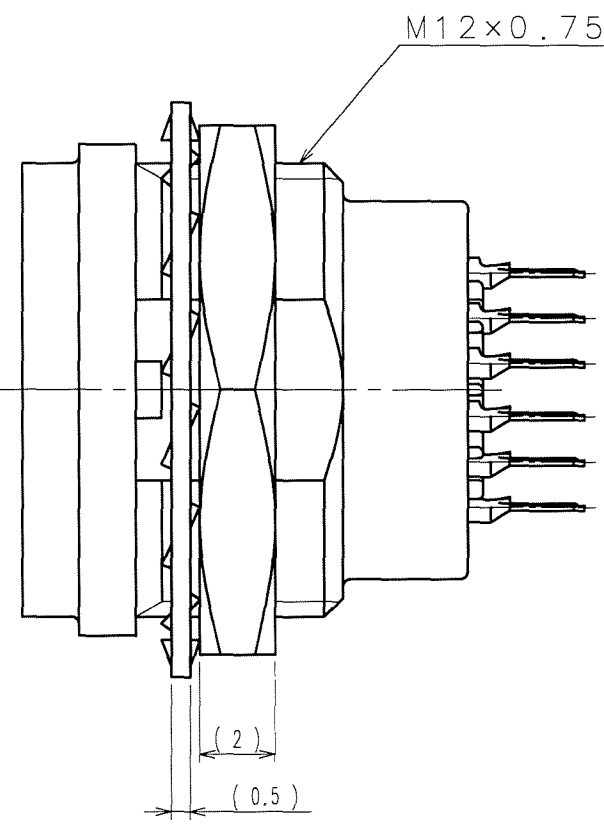
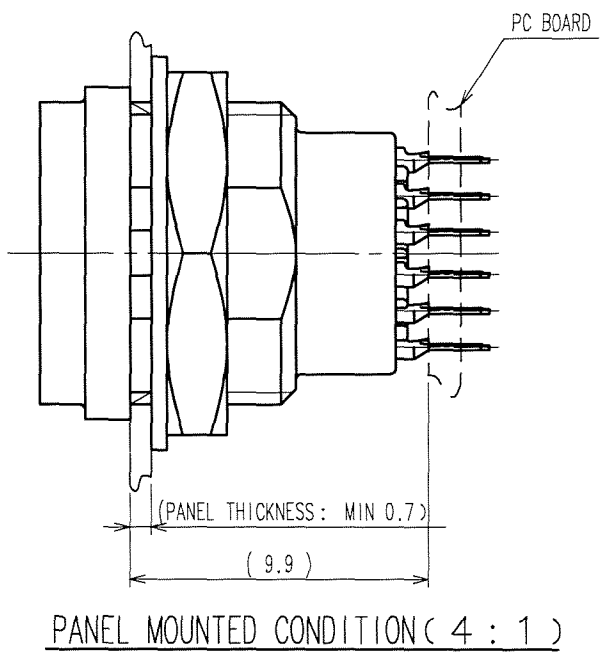


Sep.1.2018 Copyright 2018 HIROSE ELECTRIC CO., LTD. All Rights Reserved.  
 In case that the application demands a high level of reliability, such as automotive,  
 please contact a company representative for further information.

COUNT	DESCRIPTION OF REVISIONS	BY	CHKD	DATE	COUNT	DESCRIPTION OF REVISIONS	BY	CHKD	DATE
1	DIS-C-000585	T.K	E.K	07.07.27					



- NOTES
- ① THE RECOMMENDED TIGHTENING TORQUE OF REF. No. ⑥ TO BE 1.5 N·m. COATING WITH LOCTITE 242 MANUFACTURED BY HENKEL JAPAN OR EQUIVALENT IS RECOMMENDED TO PREVENT LOOSENESS.
  - ② CONTACT AREA : GOLD 0.2μm min. TERMINAL AREA: GOLD FLASH. UNDER PLATING: NICKEL 2μm min.



3	PHOSPHOR BRONZE	②	6	BRASS	NICKEL PLATING
2	POLYPHENYLENE SULFIDE (BLACK) UL94V-0		5	STEEL	ZINC CHROMATIZED(Cr3)
1	ZINC ALLOY	MATTE FINISH NICKEL PLATING	4	BERYLLIUM COPPER	NICKEL PLATING
NO.	MATERIAL	FINISH, REMARKS	NO.	MATERIAL	FINISH, REMARKS

CODE NO. (OLD)	DRAWN	DESIGNED	CHECKED	APPROVED	RELEASED
	M.SATO	Y.YAMADA		M.SATO	
	'06 09 26	'06 09 27		'06 09 27	

 SCALE 5 : 1 UNITS mm	DRAWING NO. EDC3-115078 <b>HRS</b> HIROSE ELECTRIC CO., LTD	PART NO. HR25A-9R-20SA CODE NO. CL125-0636-0-00	1/1
-----------------------------------	----------------------------------------------------------------------	----------------------------------------------------------	-----