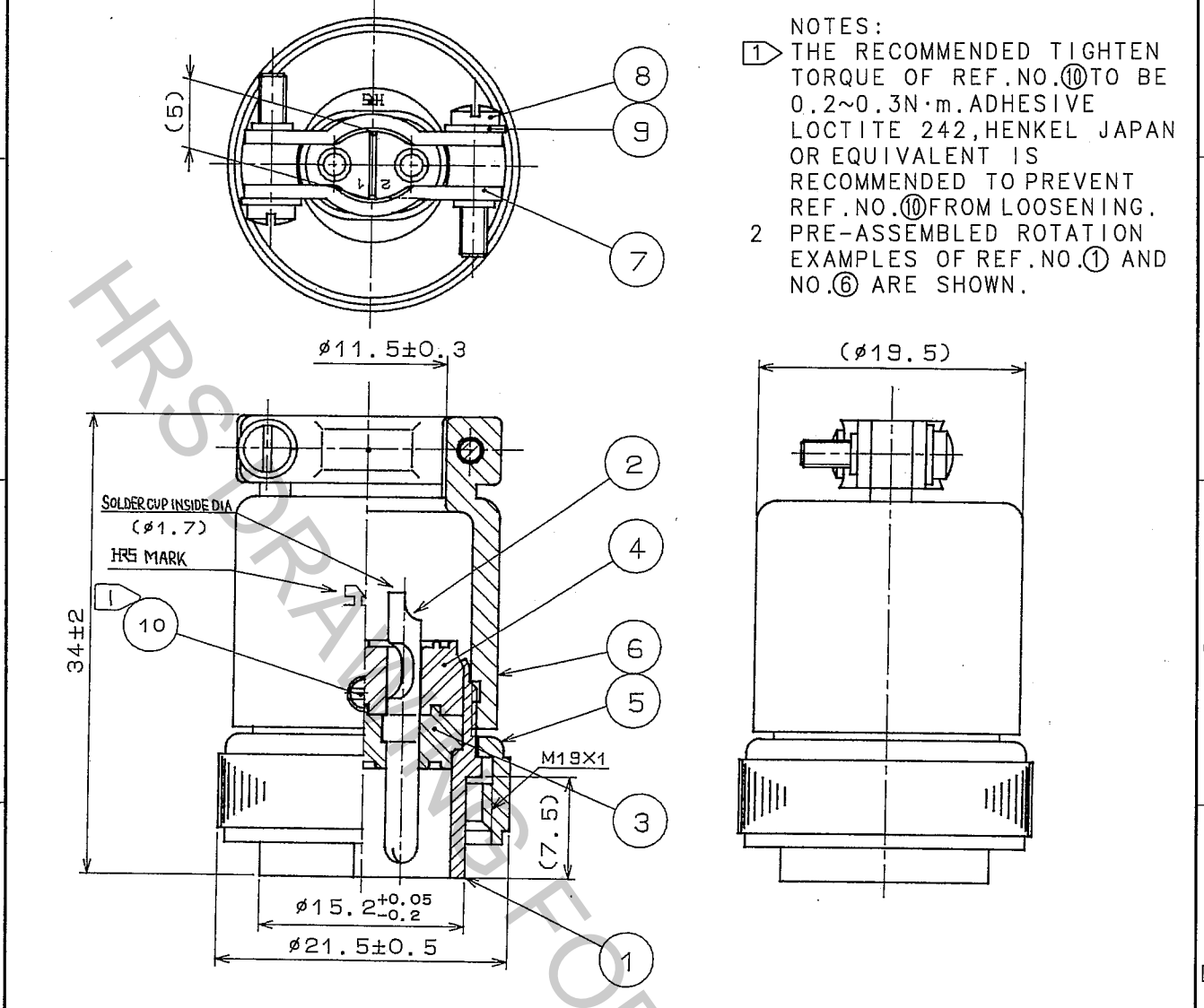


Sep.1.2018 Copyright 2018 HIROSE ELECTRIC CO., LTD. All Rights Reserved.
 In case that the application demands a high level of reliability, such as automotive,
 please contact a company representative for further information.

1			2			3			4					
COUNT	DESCRIPTION OF REVISIONS	BY	CHKD	DATE	COUNT	DESCRIPTION OF REVISIONS	BY	CHKD	DATE	COUNT	DESCRIPTION OF REVISIONS	BY	CHKD	DATE
△					△					△				
△					△					△				
△					△					△				



NOTES:
 1 THE RECOMMENDED TIGHTEN TORQUE OF REF.NO.⑩ TO BE 0.2~0.3N·m. ADHESIVE LOCTITE 242, HENKEL JAPAN OR EQUIVALENT IS RECOMMENDED TO PREVENT REF.NO.⑩ FROM LOOSENING.
 2 PRE-ASSEMBLED ROTATION EXAMPLES OF REF.NO.① AND NO.⑥ ARE SHOWN.

10	BRASS	NICKEL PLATING	M2.6×0.45×2
9	PHOSPHOR BRONZE	NICKEL PLATING	
8	BRASS	NICKEL PLATING	JIS B 1101 M2×0.4×10
7	BRASS	NICKEL PLATING	
6	BRASS	NICKEL PLATING	
5	BRASS	NICKEL PLATING	
2	BRASS	SILVER PLATING 2μm min.	
1	BRASS	NICKEL PLATING	

NO.	MATERIAL	FINISH, REMARKS	NO.	MATERIAL	FINISH, REMARKS
4	DIALLYL PHTHALATE	(BLACK) UL94V-0	3	DIALLYL PHTHALATE	(BLACK) UL94V-0

CODE NO. (OLD)	DRAWN	DESIGNED	CHECKED	APPROVED	RELEASED
	E. Yumino	Y. Yamada	S. Egawa	N. Sato	
	06.05.19	06.05.19	06.05.19	06.05.19	

 SCALE 2 : 1 UNITS mm	DRAWING NO. ELC4-040368-71 	PART NO. RM15TP-2PA(71)	CODE NO. CL109-0898-7-71	1/1
-----------------------------	-----------------------------------	----------------------------	-----------------------------	-----

TO
 R