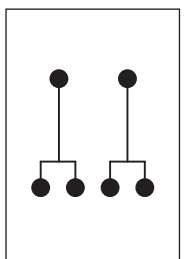
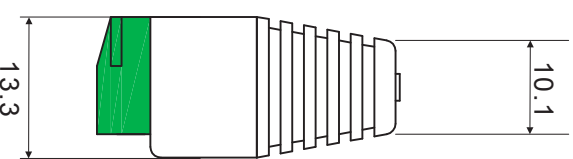
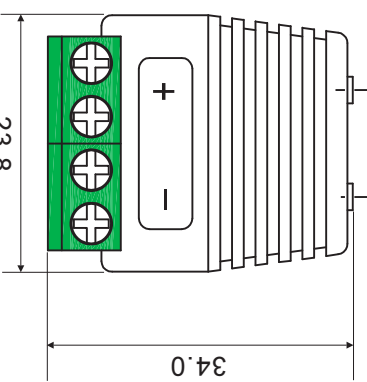
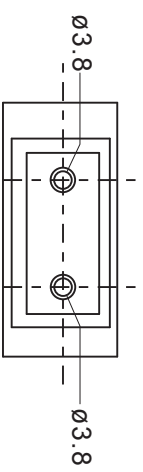


A B C D E F G H



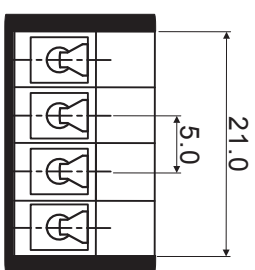
### Technical Data:


#### Electrical:

- Impedance: 50 Ohm
- Voltage rating: 30V/DC
- Current rating: 15A
- Contact resistance: <math>< 20\text{m}\Omega</math>
- Insulation resistance: >10M $\Omega$  / DC300V
- Wire range: 24-14AWG

#### Mechanical:

- Torque: 4.0kgs.cm/M2.5
- Operating temperature: -20°C to 105°C
- Material: Brass with Gold plated



DATE	REVISION	APPROVAL BY	DIMENSION	mm $\pm 0.3$	MODEL No.	CLB-JL-8159
			DRAW BY	Camilly Pun	NAME	4.0 Twin Banana Socket Terminal Adaptor
			APPROVAL BY	RIKIKI So	 Concept Design Manufacture	
			DATE	18-08-2015	cie Group Ltd, 3 Widdowson Close, Banham Ind Est Banwell, Northampton, NN6 8NG, England T: +44(0)159270072 F: +44(0)15 977081 E: info@cie-group.com W: www.cie-group.com	