

Customer Information Sheet

DRAWING No.: R30-500XX02

SHEET 2 OF 2

IF IN DOUBT - ASK



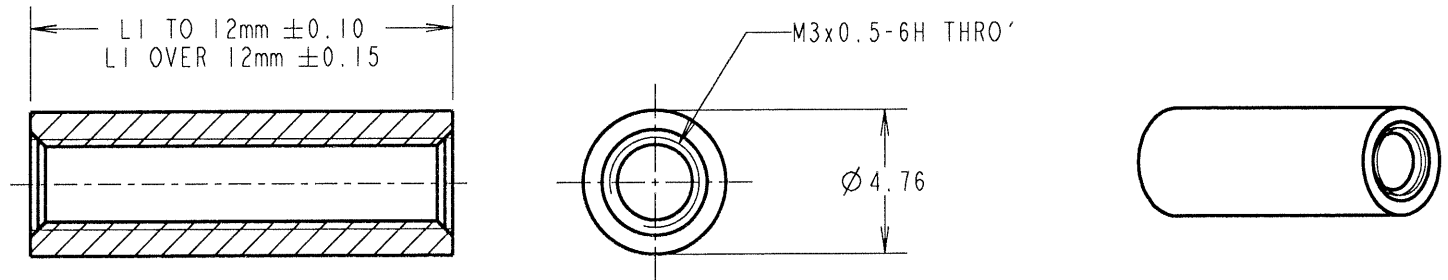
NOT TO SCALE

THIRD ANGLE PROJECTION

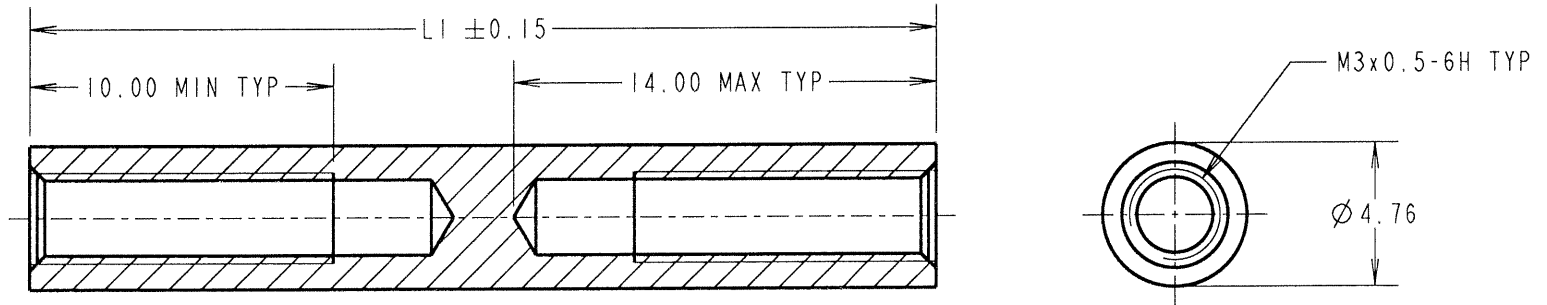
ALL DIMENSIONS IN mm

ALL SPACERS UP TO
& INCLUDING 25mm LONG

25mm SPACER DOES NOT REQUIRE
THE TAPPED HOLE TO BE THRO, BUT
MUST HAVE A MINIMUM THREAD LENGTH
OF 10mm FROM BOTH ENDS.



ALL SPACERS
OVER 25mm LONG



PART No.	LI	PART No.	LI	PART No.	LI
R30-5000402	4.00	R30-5001002	10.00	R30-5001602	16.00
R30-5000502	5.00	R30-5001102	11.00	R30-5001802	18.00
R30-5000602	6.00	R30-5001202	12.00	R30-5002002	20.00
R30-5000702	7.00	R30-5001302	13.00	R30-5002502	25.00
R30-5000802	8.00	R30-5001402	14.00	R30-5005502	55.00
R30-5000902	9.00	R30-5001502	15.00		

ORDER CODE:
R30-500XX02
LENGTH LI IN mm

JMB	5	15.10.06	9512
NAME	ISS.	DATE	C/NOTE
APPROVED: <i>[Signature]</i>			
CHECKED: <i>[Signature]</i>			
DRAWN: WJ BOURNE			
CUSTOMER REF.:			
ASSEMBLY DRG:			

HARWIN

HARWIN INC U.S.A. TEL: (812) 542 2540 FAX: (812) 542 2541	HARWIN PLC U.K. TEL: 023 9231 4545 FAX: 023 9231 4590	HARWIN PTE SINGAPORE TEL: 65 6779 4909 FAX: 65 6779 3868
--	--	---

THIS DRAWING AND ANY
INFORMATION OR DESCRIPTIVE
MATTER SET OUT HEREON ARE
CONFIDENTIAL AND COPYRIGHT
PROPERTY OF THE HARWIN
GROUP AND MUST NOT BE
DISCLOSED, LOANED, COPIED
OR USED FOR MANUFACTURING,
TENDERING OR FOR ANY
OTHER PURPOSE WITHOUT
THEIR WRITTEN PERMISSION.

TOLERANCES
X. = ±1mm
X.X = ±0.25mm
X.XX = ±0.10mm
X.XXX = ±0.01mm
ANGLES = ±5°
UNLESS STATED

MATERIAL:
BRASS
CW614N M TO BS EN 12164
(CuZn39Pb3)
FINISH: NICKEL
S/AREA: mm²

TITLE:
M3 CIRCULAR
FEMALE SPACER
DRAWING NUMBER:
R30-500XX02

SHT
2 OF
2