

ITEM	MOLEX P/N	DESCRIPTION	QTY	UOM
A,B	511630200	2.5 W/B REC HSG	2	PC
C	511640205	2.5 W/B RETAINER	2	PC
D	507528200	Mini-Lock 2.5 W/B Crimp Rec Term 20-22AWG	4	PC
E	884260070	PAPER PRINTED PAPER WHITE (S100X150YAJ)	1	PC

FROM	TO	CABLE DESCRIPTION	COLOR
A1	B2	20 AWG UL1061 BLACK DISCRETE WIRE	BLACK
A2	B1		

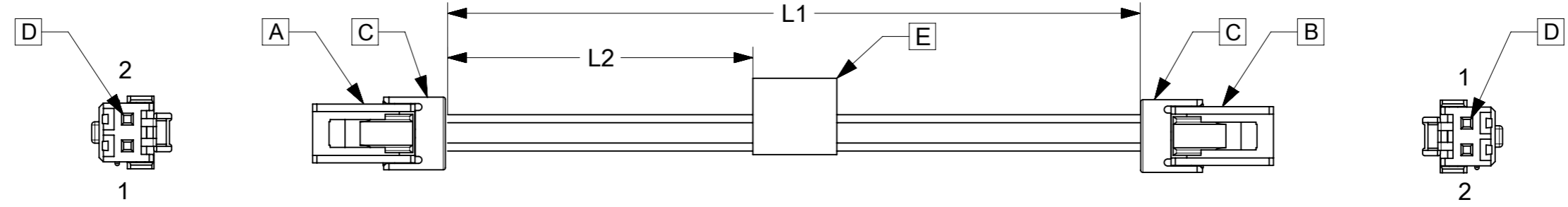


TABLE			
PART NUMBER	L1	L2	TITLE
151370200	50±5	13REF	Mini-Lock 2 Circuit 50MM
151370201	100±8	38REF	Mini-Lock 2 Circuit 100MM
151370202	150±10	63REF	Mini-Lock 2 Circuit 150MM
151370203	300±10	138REF	Mini-Lock 2 Circuit 300MM
151370205	450±15	213REF	Mini-Lock 2 Circuit 450MM
151370206	600±15	288REF	Mini-Lock 2 Circuit 600MM

- NOTES**
1. Cable assembly to be tested 100% for continuity and polarity.
 2. Label text must be 2mm max. In height with Arial font.
 3. Connector view shown is from mating side.
 4. Label must be wrapped in Flag type.

P/N:15137XXXX — MOLEX PN
 MOLEX
 BATCH WK/YR

DETAIL A

PENDING APPROVAL

DATE	REV	DESCRIPTION	REVISED BY
2018.05.25	A	INITIAL RELEASE	SSHIVASHANKA
2018.11.14	B	CABLE SIZE CHANGED FROM 22AWG TO 20AWG	SSHIVASHANKA

SYMBOLS		THIS DRAWING CONTAINS INFORMATION THAT IS PROPRIETARY TO MOLEX ELECTRONIC TECHNOLOGIES, LLC AND SHOULD NOT BE USED WITHOUT WRITTEN PERMISSION		CURRENT REV DESC:		molex	
▽ = 0	DIMENSION UNITS	SCALE	EC NO: 608031		SEE TABLE		
▽ = 0	mm	NTS	DRWN: SSHIVASHANKA 2018/11/14		PRODUCT CUSTOMER DRAWING		
▽ = 0	GENERAL TOLERANCES (UNLESS SPECIFIED)		CHK'D:		DOCUMENT NUMBER		
▽ = 0	ANGULAR TOL ± °		APPR:		151370200		
▽ = 0	4 PLACES ±		INITIAL REVISION:		DOC TYPE		
▽ = 0	3 PLACES ±		DRWN: SSHIVASHANKA 2018/05/25		PSD		
▽ = 0	2 PLACES ±		APPR: MNARAYAN01 2018/06/05		DOC PART		
▽ = 0	1 PLACE ±		MATERIAL NUMBER		000		
▽ = 0	0 PLACES ±		CUSTOMER		B		
▽ = 0	DRAFT WHERE APPLICABLE MUST REMAIN WITHIN DIMENSIONS		THIRD ANGLE PROJECTION		SHEET NUMBER		
▽ = 0			DRAWING		1 OF 1		
		A3-SIZE		SERIES			
		15137		GENERAL MARKET			

DOCUMENT STATUS	RQ	RELEASE DATE
-----------------	----	--------------