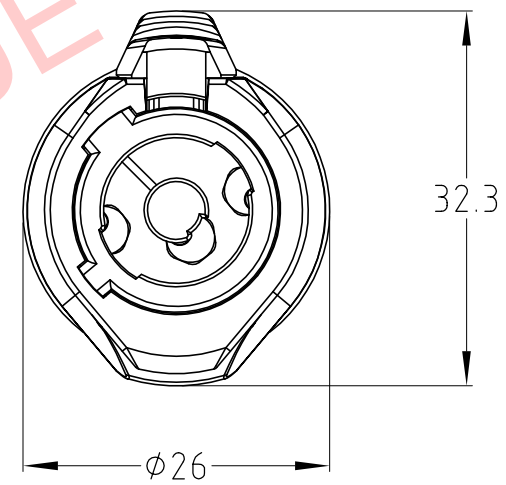
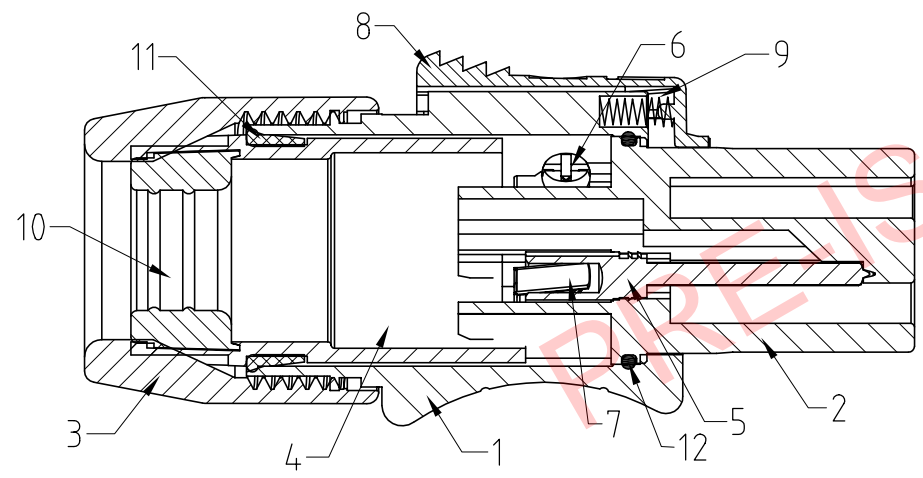
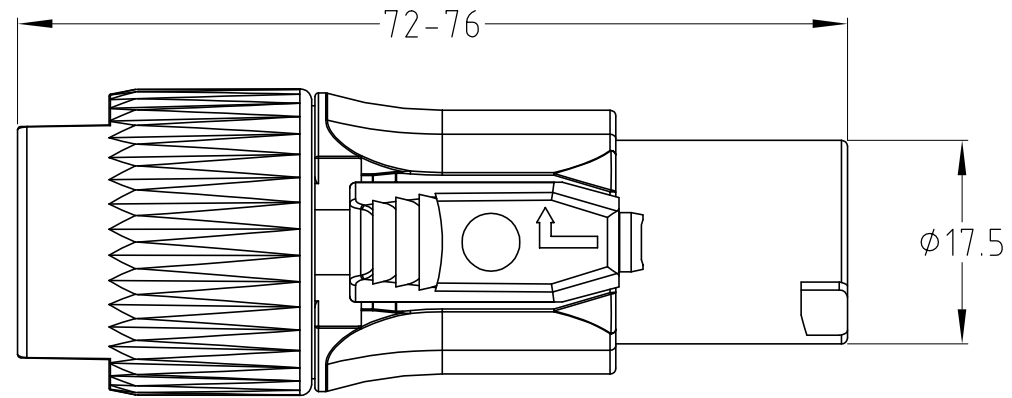


ISS.	AMEND	DATE
1	ISSUED	31/10/18



ITEM	DESCRIPTION	QTY	MATERIAL	FINISH
1	BODY	1	PA6 30% GF	GREY
2	FRONT INSERT	1	PA6 30% GF	GREY
3	LOCKRING REAR	1	PA6 30% GF	BLUE
4	INNER SLEEVE	1	PA6	BLACK
5	CONTACTS	3	BRASS	Ag PLATED
6	SCREWS	3	STEEL	BLACK
7	SCREW CONTACT	3	BRASS	Ag PLATED
8	LATCH	1	ZINC ALLOY	Ni PLATED
9	SPRING	1	SPRING STEEL	Ni PLATED
10	SEALING RING	1	RUBBER	BLACK
11	SEALING RING	1	RUBBER	BLACK
12	SEALING RING	1	RUBBER	BLACK

WARNING
DO NOT CONNECT OR DISCONNECT
WHEN UNDER LOAD OR LIVE.

Number of contacts: 2+PE
 Contact Resistance: $\leq 3m\Omega$
 Insulation Resistance after: $\geq 100M\Omega$
 Dielectric strength: 4000V DC
 Rated voltage: 250V ac
 Rated current per contact: 20A rms
 Mates with FM12315 - Power OUT Socket (Grey)

RoHS
COMPLIANT

TOLERANCE
 NO DEC. PLACE \pm
 1 DEC. PLACE \pm
 2 DEC. PLACE \pm
 HOLE $\varnothing \pm$
 ANGLES \pm
 UNLESS OTHERWISE STATED

DO NOT SCALE

Cliff Electronic Components Ltd.
 76 Holmethorpe Avenue, Holmethorpe Industrial Estate,
 Redhill, Surrey, RH1 2PF, England, UK
 Tel: 01737-771375 Fax: 01737-766012 Website: www.cliffuk.co.uk

DIMENSIONS IN MILLIMETERS UNLESS OTHERWISE STATED. WORK TO DIMENSIONS. REMOVE ALL BURRS. IF IN DOUBT ASK.

3rd ANGLE PROJECTION:

THE CONTENTS OF THIS DOCUMENT MUST NOT BE COPIED OR DISCLOSED TO A 3rd PARTY WITHOUT WRITTEN PERMISSION OF CLIFF UK. © 2018

MATERIAL: SEE TABLE
 FINISH: SEE TABLE

TITLE: CLIFFCON P - POWER OUT PLUG (GREY)

DRAWN: T.J.O.

APPROVED: D.P.J.

DRWG. No. **FM12316**

FORM: A4DRWGH