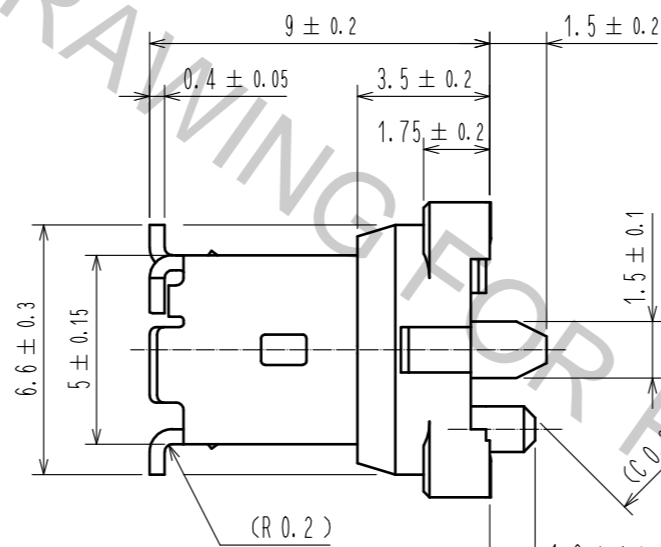
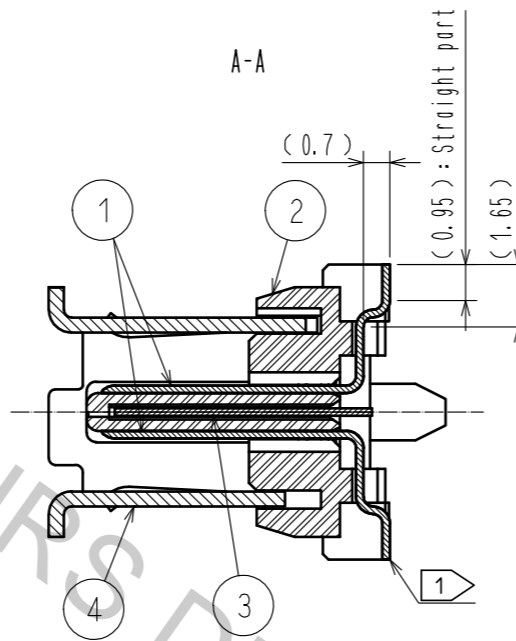
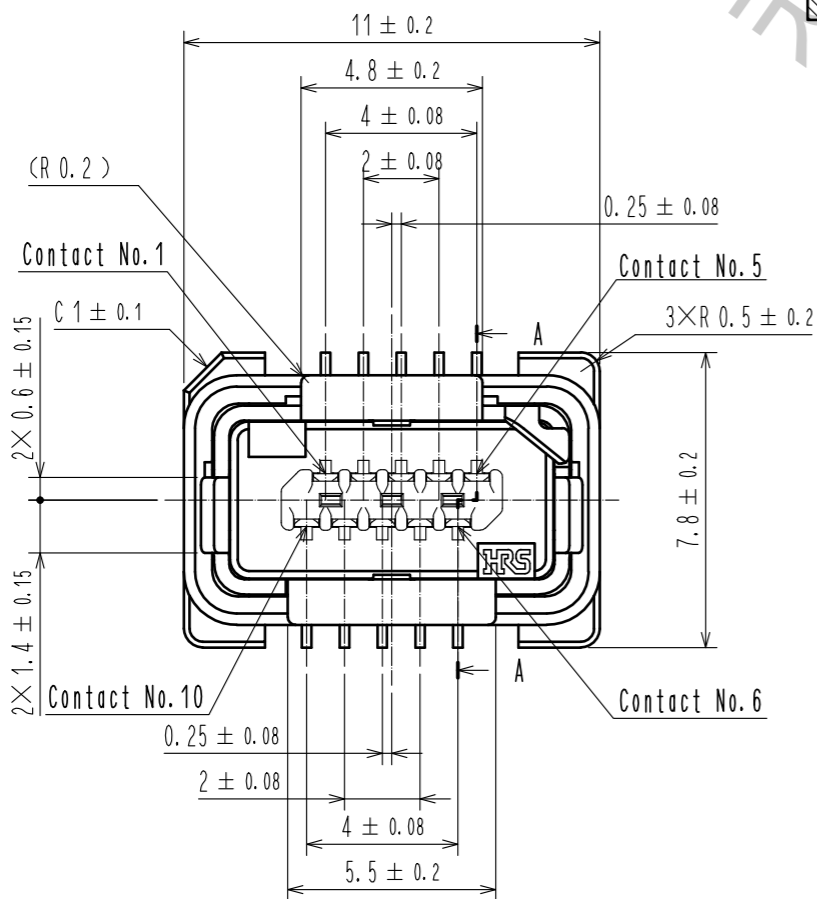
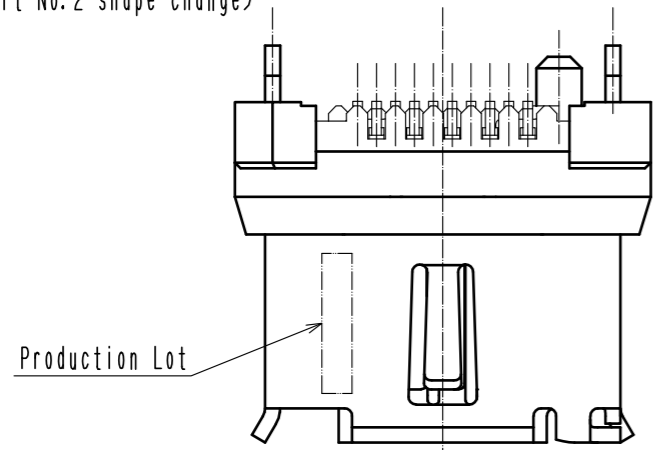
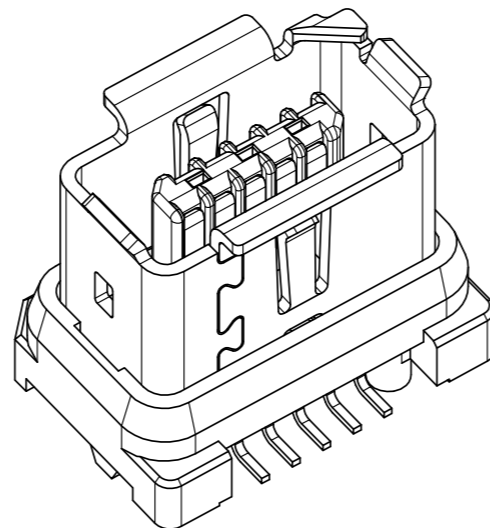


Mar.1.2019 Copyright 2019 HIROSE ELECTRIC CO., LTD. All Rights Reserved.
 In case that the application demands a high level of reliability, such as automotive,
 please contact a company representative for further information.

(Part No.2 shape change)



3D image



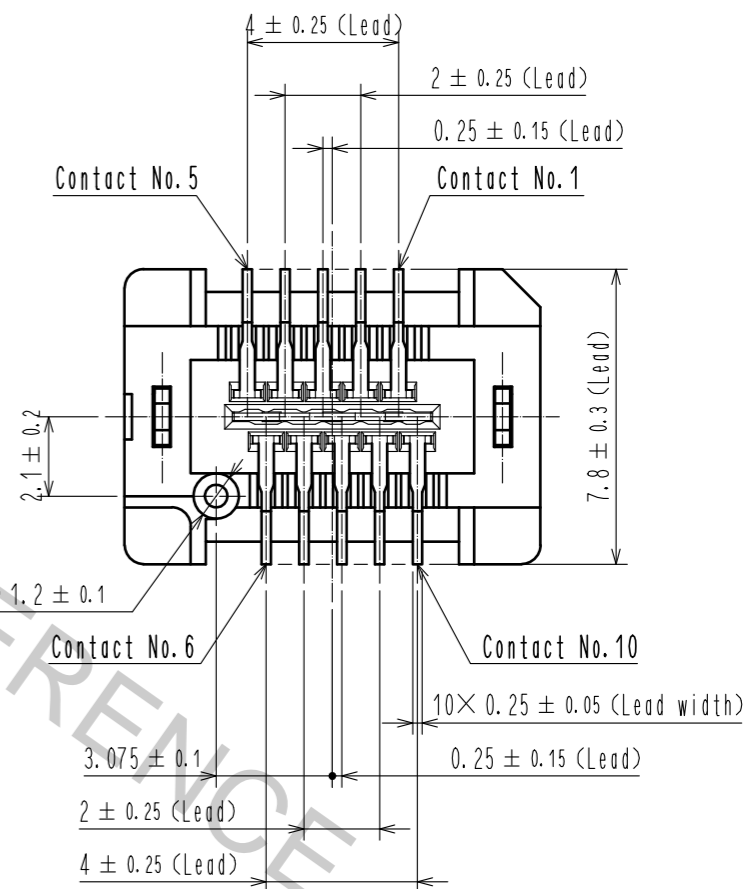
Notes. ① Co-planarity is within 0.1 mm.

2. As for part No.4 the performance remains good though there might be a difference in the plating luster between each plating lots.

③ Per reel : 450 pcs.
 The vacuum cap (part No.5) is attached to this product at delivery.

④ Refer to the mated condition diagram for the panel thickness and layout.

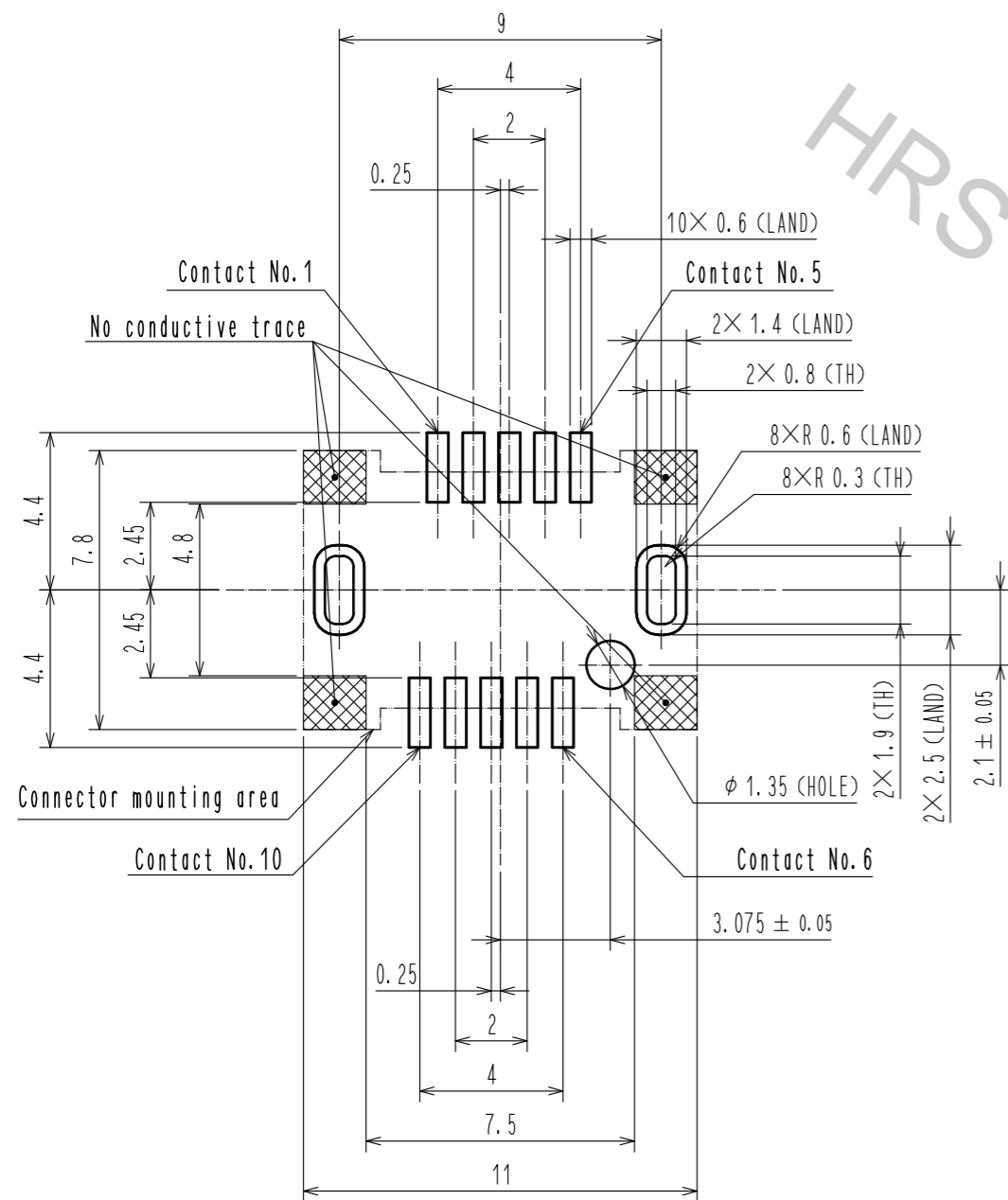
5. This product is mounted by reflow soldering.
 Refer to specification sheet ELC-129413-00-00 for reflow soldering.



3	Stainless Steel		7	PE	
2	Polyamide	Gray - UL94V-0	6	PS	
1	Copper Alloy	Contact area : Gold 0.2 μm min. Lead area : Gold 0.03 μm min. Under plating : Nickel 2 μm min.	5	Polyamide	Black - UL94V-0
			4	Stainless Steel	Surface : Tin 1 μm min. Under plating : Nickel 0.2 μm min.
NO.	MATERIAL	FINISH . REMARKS	NO.	MATERIAL	FINISH . REMARKS
UNITS mm		SCALE 5 : 1	COUNT 1	DESCRIPTION OF REVISIONS DIS-E-00001787	
DESIGNED KS. TAKAHASHI		CHECKED KI. NAGANUMA		DATE 18.09.11	
APPROVED : RI. TAKAYASU 18.04.23		DRAWING NO. EDC-129413-00-00			
CHECKED : KI. NAGANUMA 18.04.20		PART NO. IX80G-B-10P			
DESIGNED : YS. SAKODA 18.04.20		CODE NO. CL251-0019-0-00			
DRAWN : YS. SAKODA 18.04.20				② 1/3	

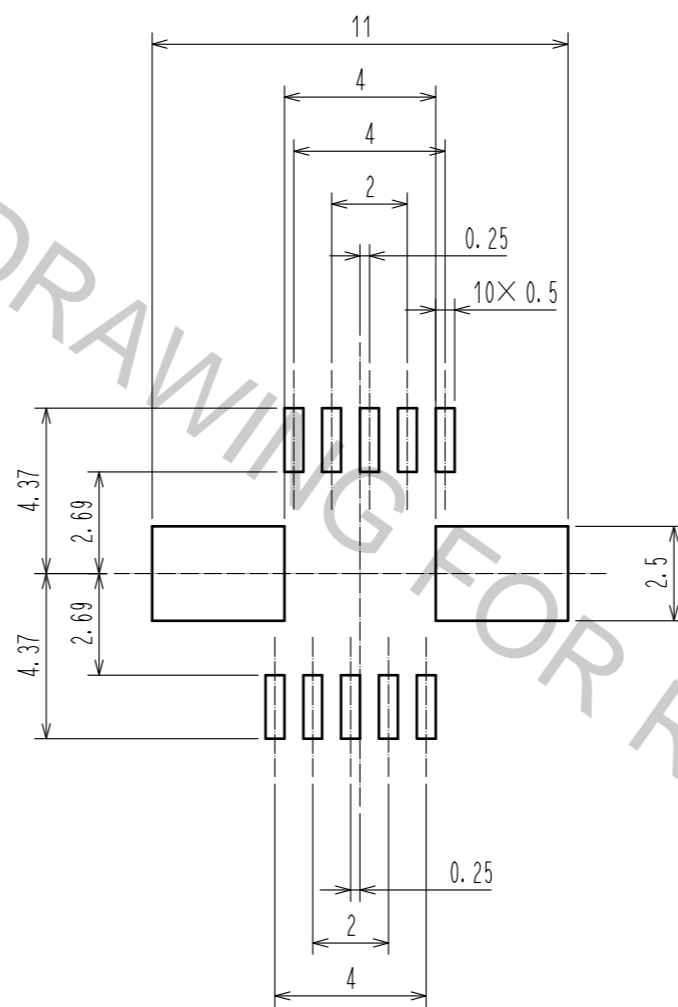
Mar.1.2019 Copyright 2019 HIROSE ELECTRIC CO., LTD. All Rights Reserved.
 In case that the application demands a high level of reliability, such as automotive,
 please contact a company representative for further information.

Reference PCB Layout (Connector Mounting Side)(t = 1.6)



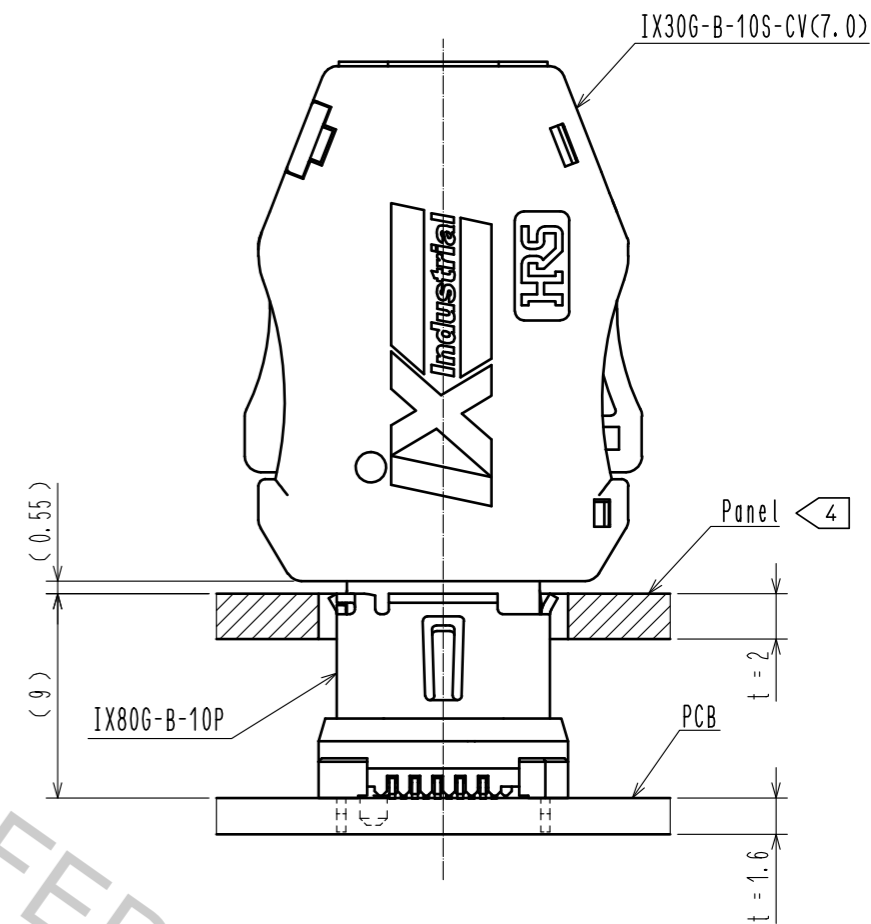
General tolerance is +/- 0.05

Reference Metal Mask Layout (t = 0.15)

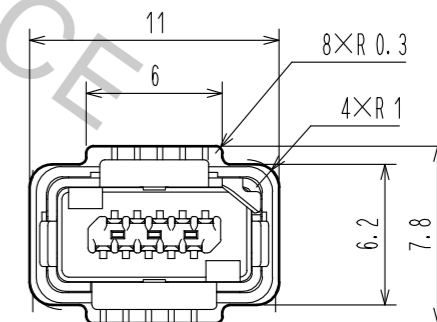


General tolerance is +/- 0.05

Mated Condition (Free)



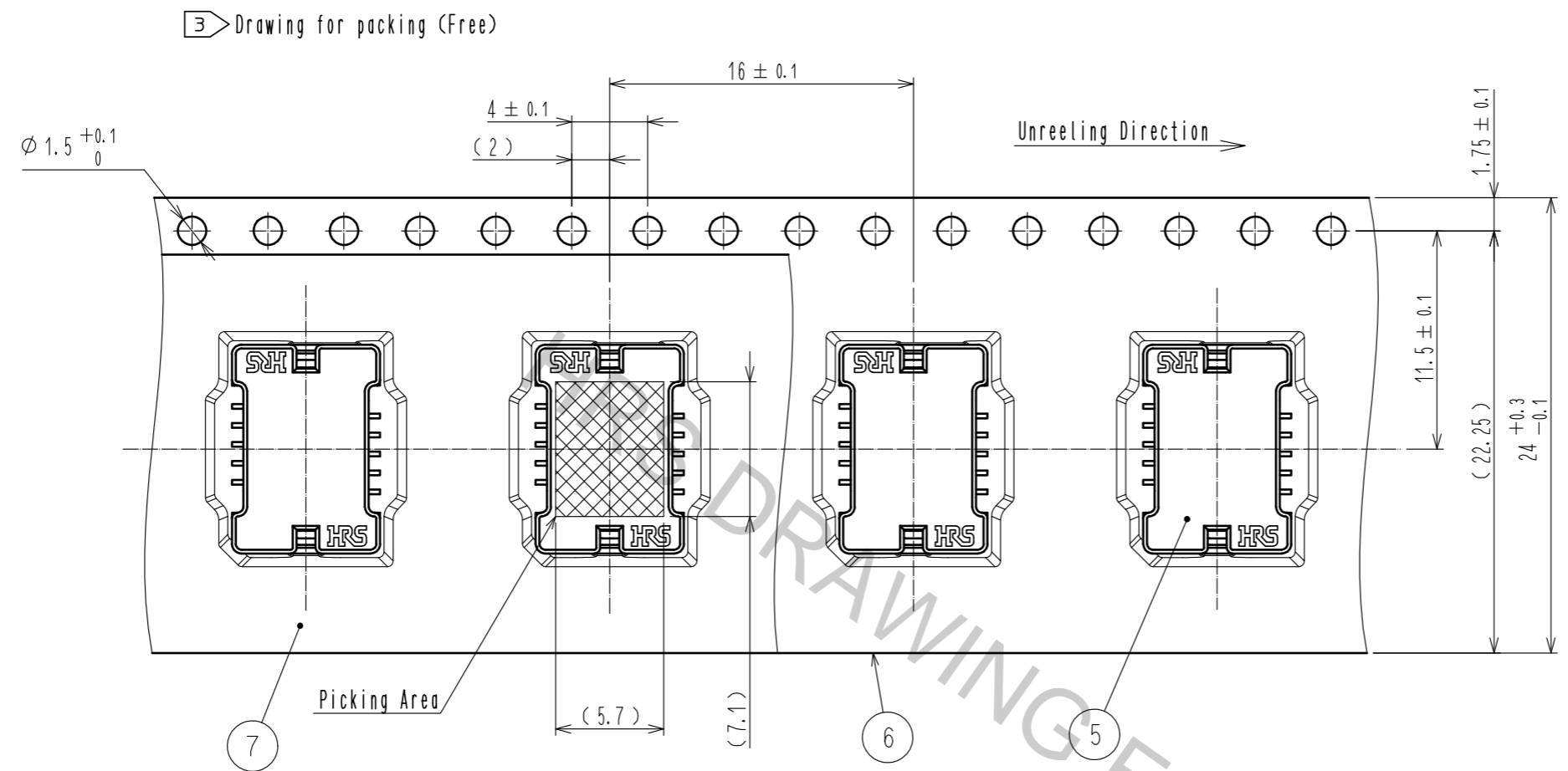
Reference Dimensions of Panel Cutout (Free)



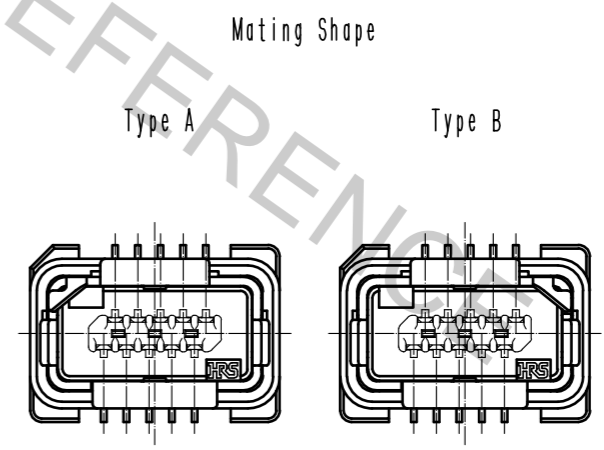
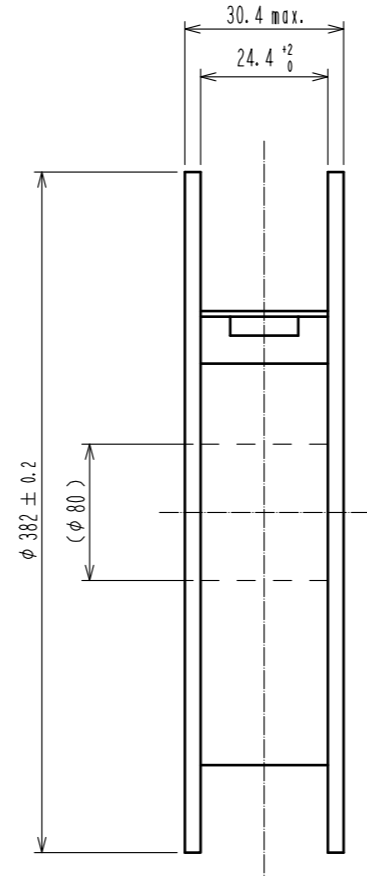
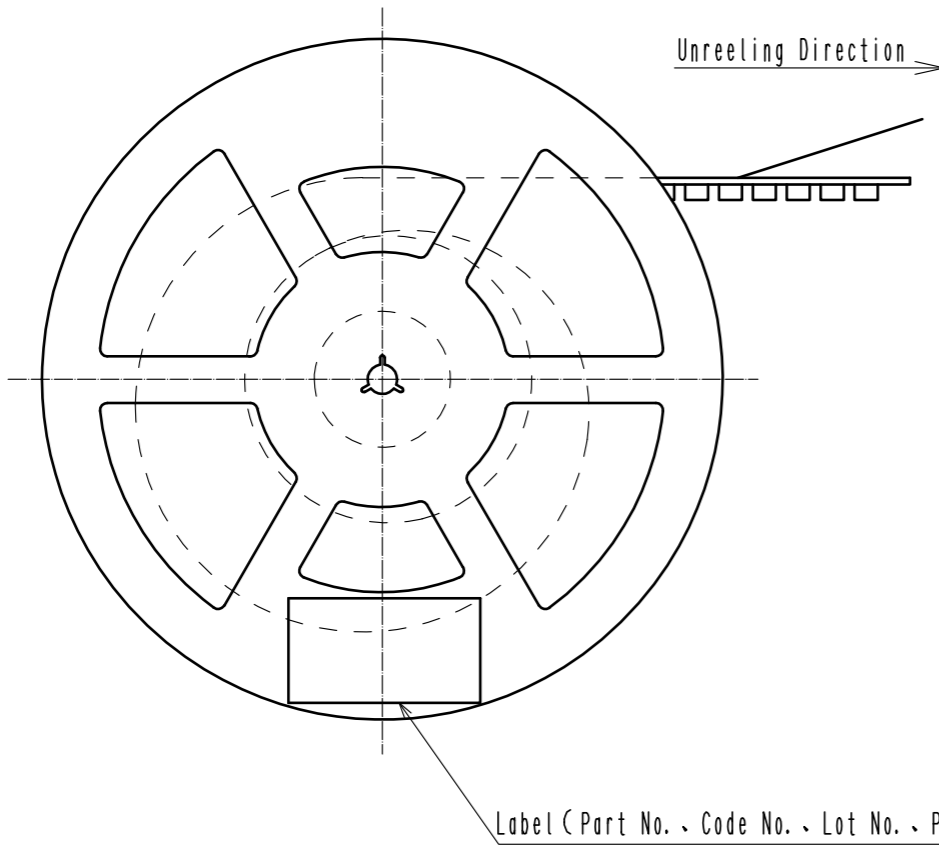
- Notes. 6 Thickness of metal mask is 0.1 mm min.
 Metal mask dimensions of the drawings described, are reference dimensions for 0.15 mm thickness metal mask.
 Change the metal mask dimensions by thickness of the metal mask, thickness of PCB, component of solder paste and mounting conditions.
 Change the metal mask dimensions in case of mounting IX80G-+-10P in parallel.
 Change the metal mask dimensions, if there are other mounting parts or implementation pattern around the portion of mounting position of IX80G-+-10P.

HRS	DRAWING NO.	EDC-129413-00-00	2 / 3
	PART NO.	IX80G-B-10P	
	CODE NO.	CL251-0019-0-00	

Mar.1.2019 Copyright 2019 HIROSE ELECTRIC CO., LTD. All Rights Reserved.
 In case that the application demands a high level of reliability, such as automotive,
 please contact a company representative for further information.



Notes 7. This product (Type B) is used for non Ethernet applications like signaling, serial or other industrial bus communication systems. Please use Type A for 10/100Mbit/s and 1/10 Gbit/s Ethernet communication.



HRS	DRAWING NO.	EDC-129413-00-00	3/3
	PART NO.	IX80G-B-10P	
	CODE NO.	CL251-0019-0-00	