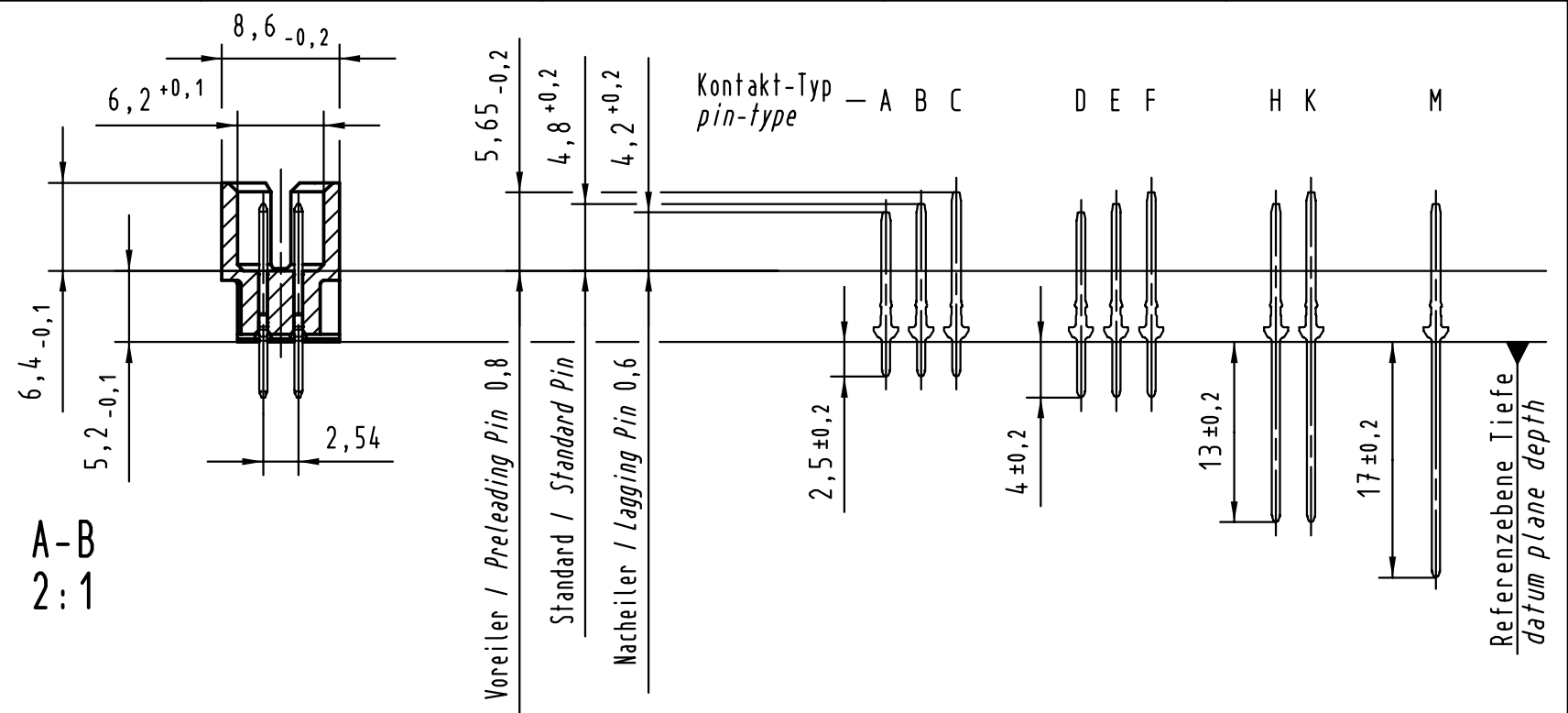
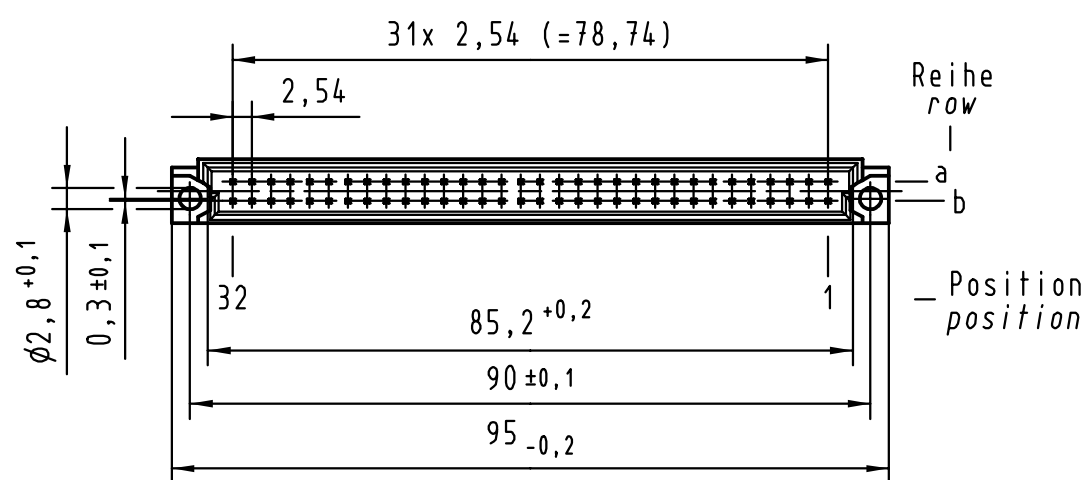
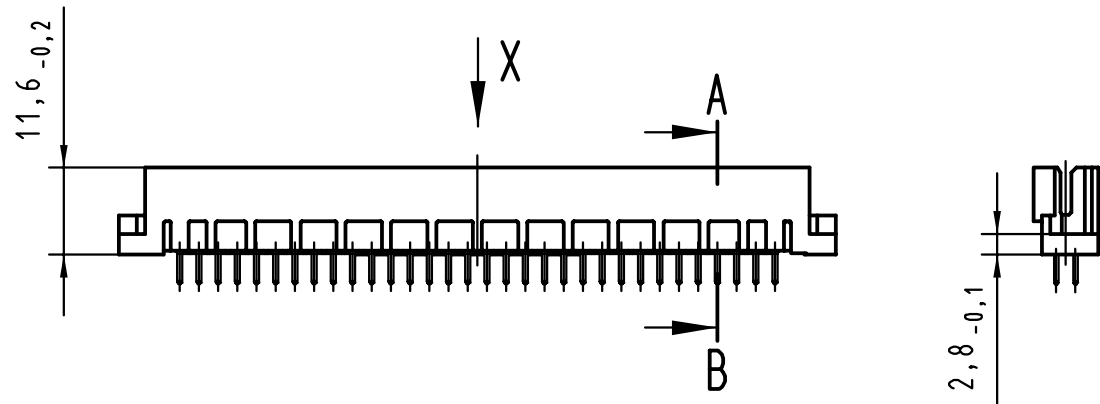
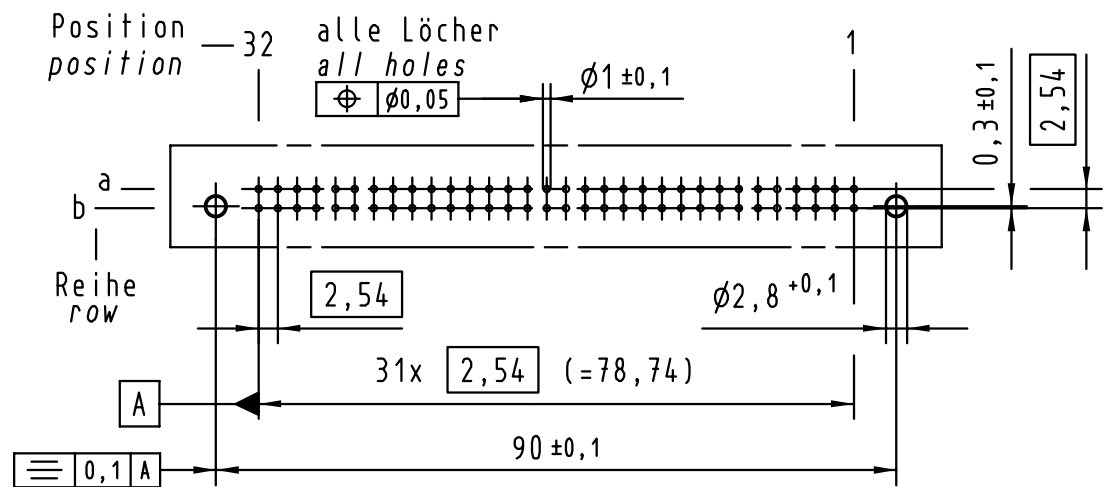
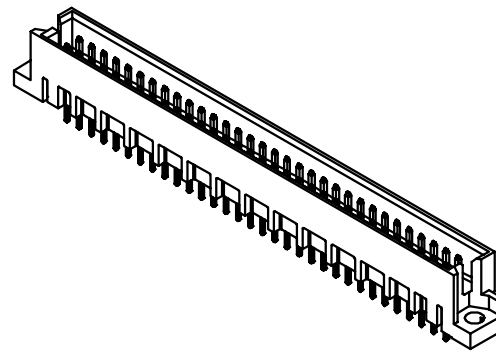
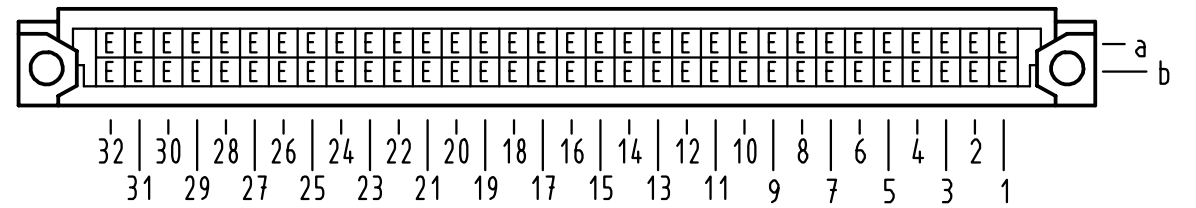


Alle Rechte vorbehalten/ All rights reserved

**X**  
(Lochbild)  
(Board drillings)



**X** Kontaktbelegung  
contact loading



09 72 164 5903	—	min. 0,76 μm (30 μm) Au über/over min. 1,27 μm (50 μm) Ni
09 72 164 7903	3	Au über/over Ni
09 72 164 6903	2	Au über/over Ni
09 72 164 2903	1	Au über/over Ni
Bestell-Nr. Part-No.	Anforderungsstufe nach IEC performance level per IEC	Kontaktoberfläche Contact Plating

	Techn. Character.			Nicht tolerierte Maß/Free size tolerances siehe / see IEC 603-2	
		Dat.	Name	Maßstab/Scale	
	Detail.	18.05.01	Rie.	1:1	
	Insp.	18.05.01	Pa.	(2:1)	
Stand.					
29790	HARTING KGaA				
Mod.	Dat.	Name	D-32339 ESPELKAMP		
				TB 09 72 164 x903	
				Sub.	