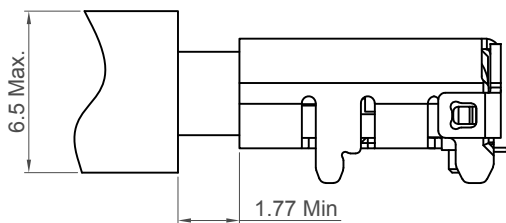
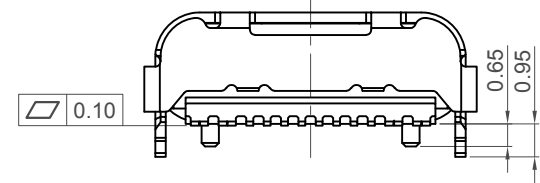
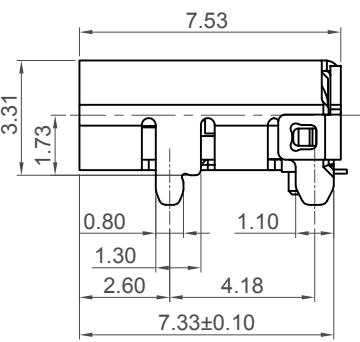
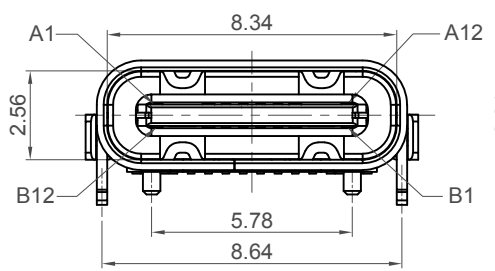


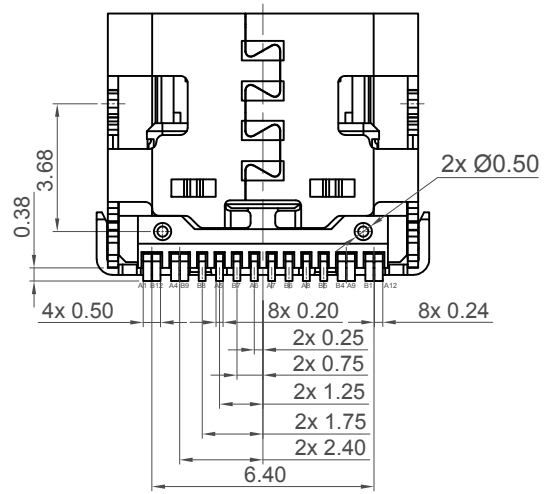
Recommended PCB Layout

As viewed from component side Tolerance: ±0.05mm

▨ Solder Area □ Component Outline



Plug and Receptacle Mating View



Ordering Grid

USB4105 - **XX** - **A**

Contact Plating
GF = Gold Flash (standard)
 15 = 15µ" Gold

Packing Options
 A = Tape & Reel

Pin	Signal	Mating Sequence	Pin	Signal	Mating Sequence
A1	GND	First	B12	GND	First
A4	Vbus	First	B9	Vbus	First
A5	CC1	Second	B8	SBU2	Second
A6	Dp1	Second	B7	Dn2	Second
A7	Dn1	Second	B6	Dp2	Second
A8	SBU1	Second	B5	CC2	Second
A9	Vbus	First	B4	Vbus	First
A12	GND	First	B1	GND	First
SHELL			SHELL		

Specifications

Material

Insulator: LCP, UL 94V-0, Black
 Contact: Copper Alloy
 Shell: Stainless steel
 Mid Plate: Stainless Steel

Plating

Contact: See Ordering Grid
 Solder Tails: Gold Flash Over Nickel
 Shell: Nickel

Electrical

Current Rating: 5.00A collectively for Vbus pins
 6.25A collectively for GND pins
 1.25A for B5 pin
 0.25A per pin for all other pins
 Voltage Rating: 20V DC
 Contact Resistance: 40mΩ max initial.
 50mΩ max after test
 Dielectric Withstanding Voltage: 100V AC
 Insulation Resistance 100MΩ min

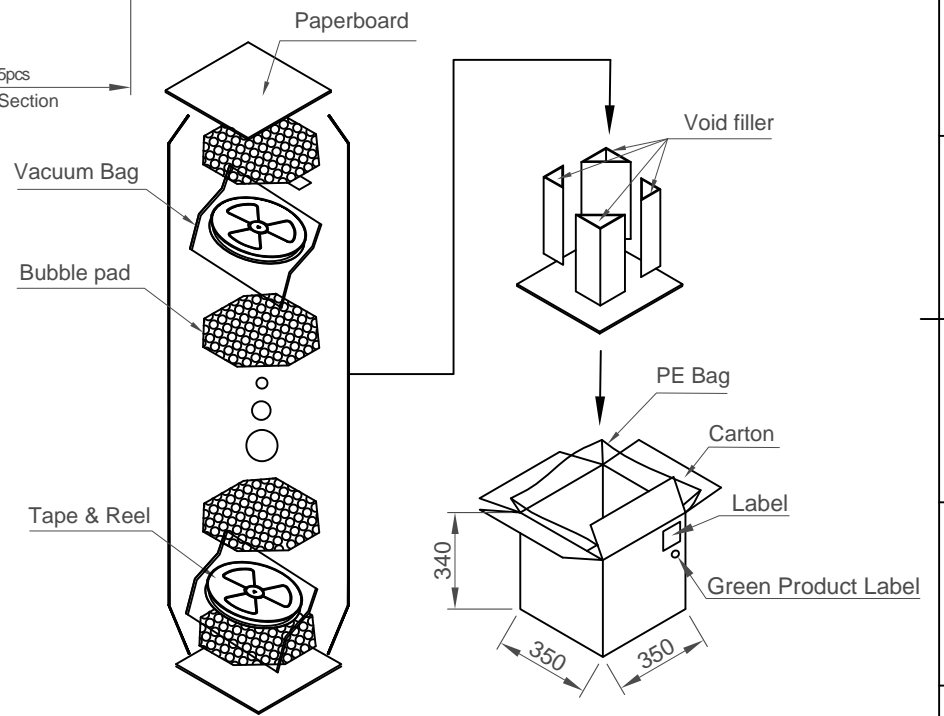
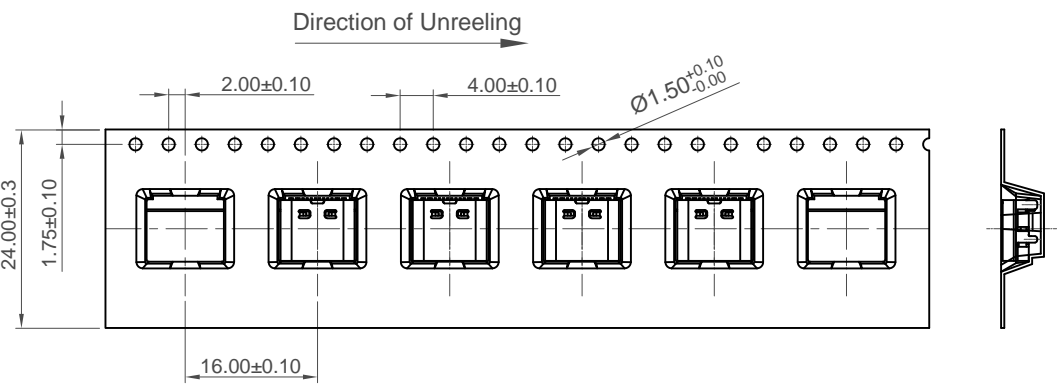
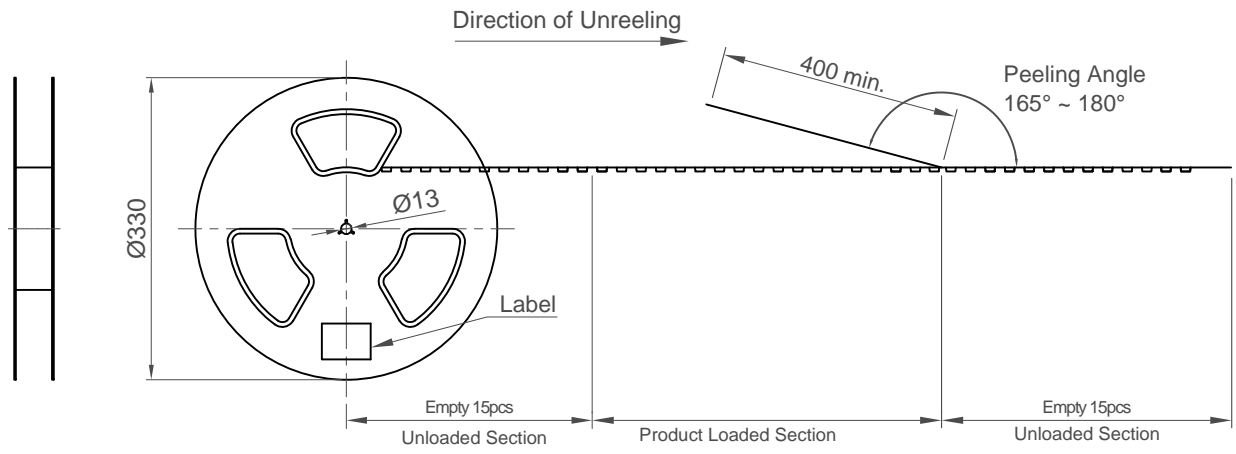
Mechanical & Environmental

Operating Temperature: -40°C to +85°C
 Mating Force: 5 to 20 N.
 Unmated Force: 6 to 20 N after test
 Durability: 10,000 cycles

Part Number USB4105		Product Description USB Type C Receptacle for USB 2.0 SMT Type, PCB Top Mount			This drawing is confidential and copyright of Global Connector Technology, Ltd (GCT). This drawing must not be copied or disclosed without written consent. E & OE
Drawing Date 4th October 2019		Units: Metric (mm)			
By	CC	Tolerances (Except as Noted) Length Angle			Not to Scale
Detail	Drawing Release	X ± 0.38			
Revision	A3	X.X ± 0.30			
Date	20/10/20	X.XXX ± 0.10			
		X ± 2°		Drawn By CC	Sheet No. 1/2
		X.X ± 1°			



H
G
F
E
D
C
B
A



Notes:
Peeling off force of top tape: 0.1-1.3N (Peeling direction as shown)

Materials:
Carrier Tape: Polystyrene (PS)
Top Tape: PC
Reel Tape: Polystyrene (PS)
Vacuum Bag: PE

Pcs / Reel	Reels / Carton	Total Quality
800	10	8,000 pcs

Part Number USB4105		Product Description USB Type C Receptacle for USB 2.0 SMT Type, PCB Top Mount	
Drawing Date 4th October 2019			
By CC	Drawing Release A3	Tolerances (Except as Noted) Length X. ± 0.38 X.X ± 0.30 X.XX ± 0.15 X.XXX ± 0.10	Units: Metric (mm) X. ± 2° X.X ± 1°
Revision Date	20/10/20		



This drawing is confidential and copyright of Global Connector Technology, Ltd (GCT). This drawing must not be copied or disclosed without written consent. E & OE



Not to Scale	Drawn By CC	Sheet No. 2/2
--------------	----------------	------------------

1 2 3 4 5 6 7 8