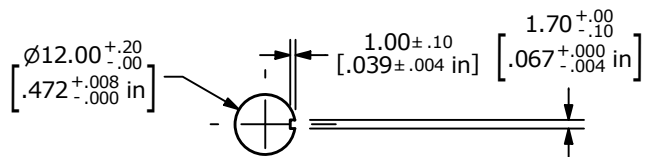
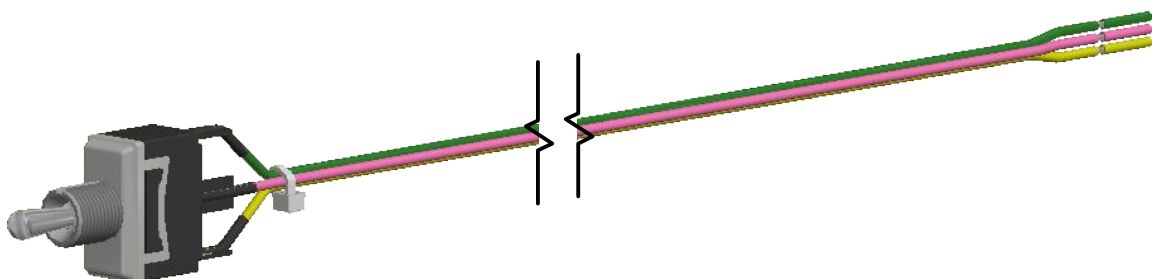


SWITCH	WIRE
SW1-1	WIRE, 18AWG AWM UL3266, GREEN
SW1-2	WIRE, 18AWG AWM UL3266, PINK
SW1-3	WIRE, 18AWG AWM UL3266, YELLOW



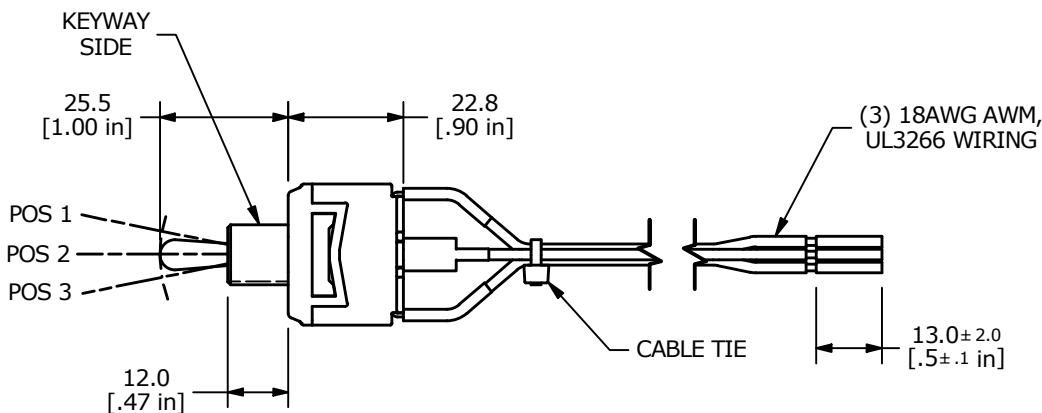
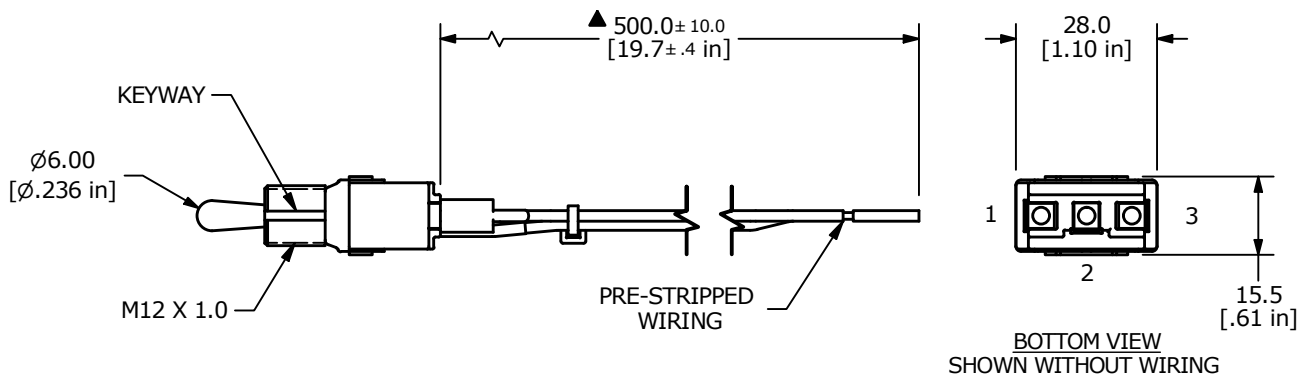
RECOMMENDED PANEL CUT OUT

▲ SWITCH FUNCTION		
POS. 1	POS. 2	POS. 3
(ON)	OFF	(ON)
2-3	OPEN	1-2

() = DENOTES MOMENTARY

NOTES:

- ALL DIMENSIONS IN MM
- GENERAL TOLERANCE: X.X = ±0.5
X.XX = ±0.25
- TERM. NOS. FOR REFERENCE ONLY
- ELECTRICAL LIFE: 6,000 CYCLES
- OPERATING TEMP: 0°C to 85°C
- CONTACT RESISTANCE: 50mΩ MAX. INITIAL
- INSULATION RESISTANCE: 2MΩ AT 500VDC
- DIELECTRIC STRENGTH: 1000VAC FOR 1 MINUTE
- ▲ DENOTES CRITICAL PARAMETER
- CONTACT RATING: 20A 125VAC,
15A 277VAC
2HP 125/277VAC
- ▲ 11. SUPPLIED HARDWARE: 2 HEXNUTS



TITLE ST1WDD10				
SCALE 2:3	DATE 10/7/2020	DR MJR	DWG 34-ST1WDD10	REV A