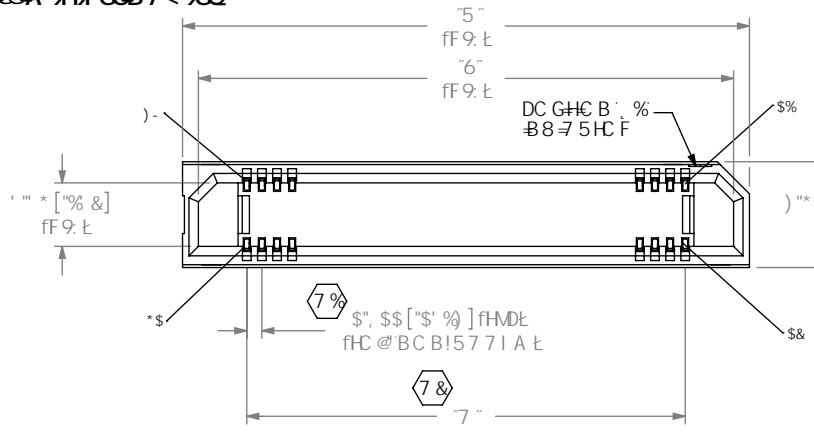


F9J GCB @

89G B98 / 8A 9BGC B98
B'A @A 9HFGB7 < 9CQ

8C B'CH
G7 5 @: FCA
Hk GDF B'H



9F: , !LLL!LL "L!L!8J!LLL

Bc C: DC GHC BG
FD9F CK L

C DHC B
!?: DC @M5A -89: @A D58
!H: H5 D9/ F 99@
"FBC H5J 5 @6@9 B %\$\$ DC Gk
!@ @H7 < 9G FG99 B C H9) L
H !G@ GE 1 99N @H7 <
..... FG99 B C H9) / : = * L
!9: D. 9L H9B 898 ; ! -89 DC GH
..... FG99 B C H9) * L

D @HB: GD97 = 7 5 HC B
!@ @ < HG9 @7 HJ 9; C @ #A 5H H9 HB
..... fl G9 7 ! & % @ LL "L!@
!G G9 @7 HJ 9; C @ #A 5H H9 HB
..... fl G9 7 ! & % @ LL "L!@

FCK GD97 = 7 5 HC B
!8J. 8C1 6 @J 9FH7 5 @
H 1 BC HF9 @95 G98 : CF DFC 81 7 HC B

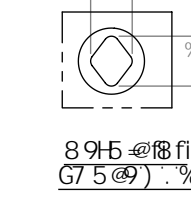
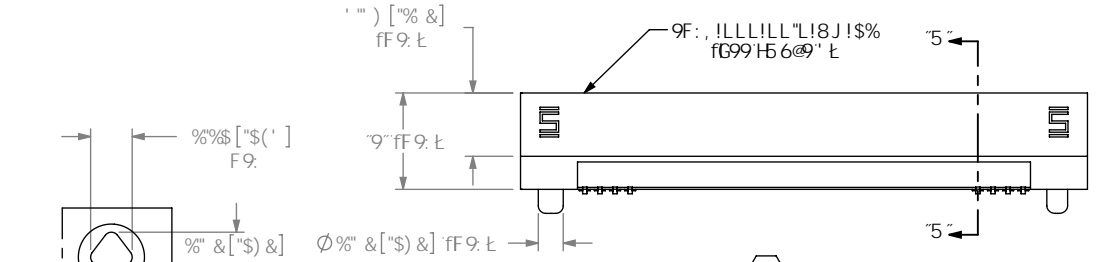
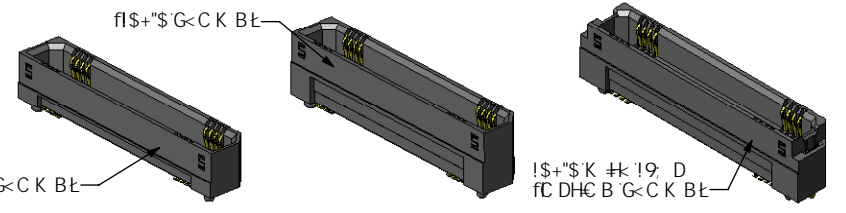


TABLE 1

No. OF POS.	
-005, -010, -011, -013, -020, -025, -023 -030	0.10 [.004]
**-.035, -040, -049, -050, -060	0.12 [.005]
-070, -075, **-100	0.15 [.006]

fl 1 BC HF9 @95 G98 : CF DFC 81 7 HC B L

TABLE 2 (REF)

STACK HEIGHT

ERF8 LEAD STYLE	ERM8 LEAD STYLE		
	-02.0	-05.0	**09.0
-05.0	7.0MM	10.0MM	14.0MM
-07.0	9.0MM	12.0MM	16.0MM

fl 1 BC HF9 @95 G98 : CF DFC 81 7 HC B L

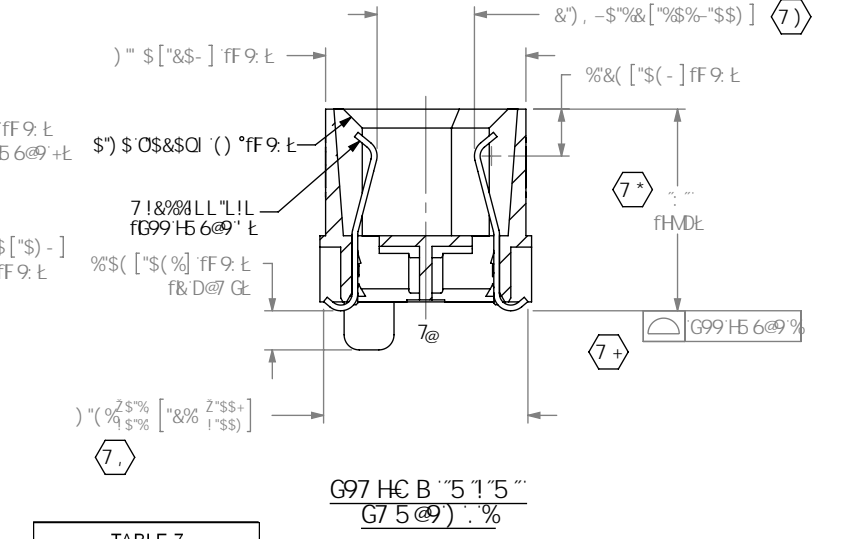
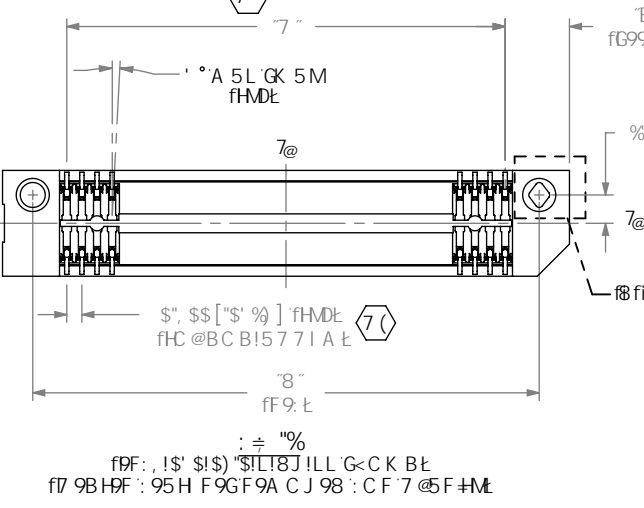


TABLE 7

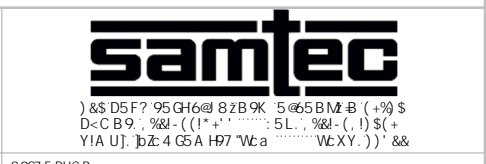
OPTION	"N"
NONE	3.40 [.134]
-L	4.15 [.163]

BC HPG

% (7) F9DF9G9BHG5 7 F#7 5 @8A 9BGC B"
&* 6l FF 5 @C K 5B7 9: \$S", OS\$% OA 5L"
' "A -B A I A DI G<C I H: C F 7 9: & * & B O) @S" Q
("D5 FIGHC 69 D5 7 25: 98 -B HF5 MZ1 B @GG
" "HF C DHC B : GGD97 = 98"
)" C DHC B C B @M5J 5 @6@9 C B 1\$) "\$ @58 GHM@9"
" "C DHC B C B @M5J 5 @6@9 C B 1\$+ \$ @58 GHM@9Z5 @C !@/ !6@
" "C DHC B GBC H5J 5 @6@9 B 7 CA 6B5HC B K #k 19: DC DHC B"

I B @GG C H 9FK @9 GD97 = 98 2
8 A 9B GC BG 5 F 9 B
A @A 9HF GB 7 < 9CQ
HC @F 5B 7 9G 5 F 9
897 A 5 @G
L'L : + \$ " OS \$ Q " & *
L'LL : + \$ " OS \$ Q
L'LL : + \$ " OS \$ Q

DFC DF 9H5 FMBC H9
H: G8C 71A 9B H7 C B H5 B G B: CFA 5HC B
7 C B: 89B H5 @58 B DFC DF 9H5 FMC
G5A H7 2 B 7 * 5 B B G 5 @B C H6 9 F 9 DFC 81 7 98
C F H5 B G 9 F 98 H C C H 9 F B C 71 A 9 B H G C F
8 47 @C 98 H C C H 9 F G C F I 98 : C F 5 B M
D I F D C 9 C H 9 F H 5 B H 5 H K < 7 < H K 5 G
C 6 5 8 9 8 K # K C I H K 9 9 L D F 9 G 9 8 K F H 9 8
7 C B 9 8 H C: G5A H7 2 B 7



A 5HF 5 @ 8 C B'CH G7 5 @9 8F5 K B: G 99H G7 5 @9: %
B G @HC F: @ D27 C @C F: 6 @5 7 ?
7 C B H 5 7 H / @ H 7 < 9 G 6 Y 7 I

89G7 F @HC B:
\$, A A '98; 9 F 5 H 9 GC 7 ? 9 H 5 GG 9 A 6 @M
8K: "BC"
9F: , !LLL!LL "L!L!8J!LLL

6M ? BC K @9B - # & * # & \$ \$) G < 99H % C: '

CONTROL PLAN CRITICAL INSPECTION TABLE			
OPTION	ASSEMBLY OPERATION	START-UP INSPECTION CODE A	IN-PROCESS INSPECTION CODE B
ANY	CUT COMBS		C16,C17
NONE	FILL C-211-XX.X-X	C1,C2,C3,C4,C8,C18	C5,C6
-L & -SL	FILL WT-30-01-X & C-211-XX.X-X	C1,C2,C3,C4,C8,C9,C10,C12,C18,C19	C5,C6,C11
-EGP	FILL WT-30-02-X & C-211-XX.X-X	C1,C2,C3,C4,C8,C10,C12,C18,C19	C5,C6,C11
-K ONLY	APPLY KAPTON	C1,C2,C3,C4,C13,C14	
-L, -SL, -EGP w/ -K	APPLY KAPTON	C1,C2,C3,C4,C10,C12,C14,C15	C11

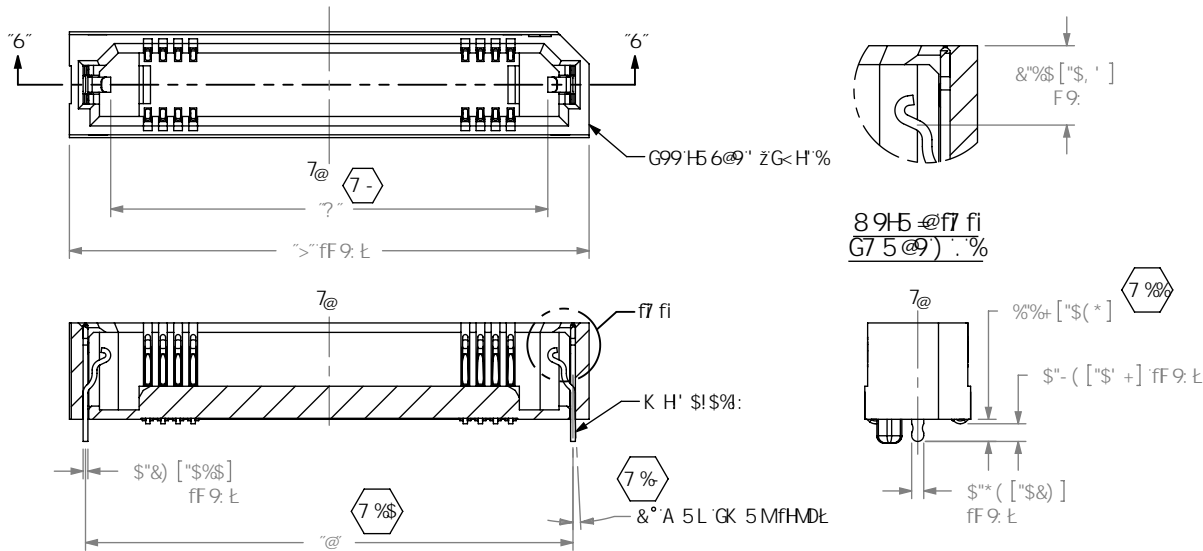
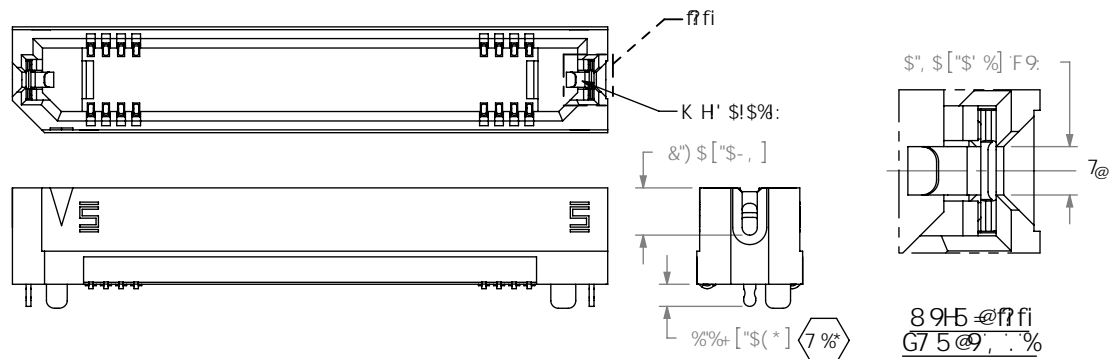
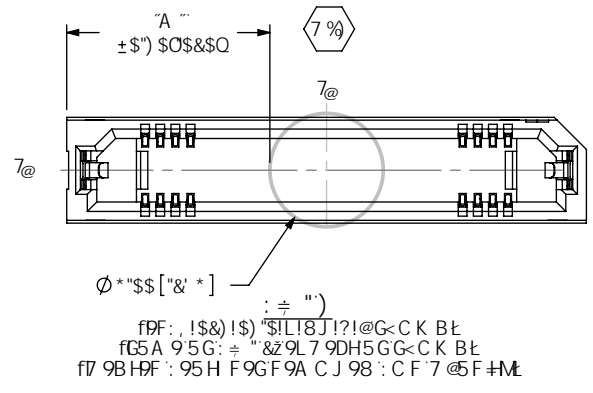


TABLE 6				
POSITION	"J"	"K"	"L"	"M"
-005	11.50 [.453]	7.13 [.281]	9.8 [.386]	2.75 [.108]
-010	15.50 [.610]	11.13 [.438]	13.8 [.543]	4.75 [.187]
-011	16.30 [.642]	11.93 [.470]	14.6 [.575]	5.15 [.203]
-013	17.90 [.705]	13.53 [.533]	16.2 [.638]	5.95 [.234]
-020	23.50 [.925]	19.13 [.753]	21.8 [.858]	8.75 [.344]
-023	25.90 [1.020]	21.53 [.848]	24.2 [.953]	11.15 [.439]
-025	27.50 [1.083]	23.13 [.911]	25.8 [1.016]	10.75 [.423]
-030	31.50 [1.240]	27.13 [1.068]	29.8 [1.173]	12.75 [.502]
**035	35.50 [1.398]	31.13 [1.226]	33.8 [1.330]	14.75 [.581]
-040	39.50 [1.555]	35.13 [1.383]	37.8 [1.488]	16.75 [.659]
-049	46.70 [1.839]	42.33 [1.667]	45.0 [1.772]	20.35 [.801]
-050	47.50 [1.870]	43.13 [1.698]	45.8 [1.803]	20.75 [.817]
-060	55.50 [2.185]	51.13 [2.013]	53.8 [2.118]	24.75 [.974]
-070	63.50 [2.500]	59.13 [2.328]	61.8 [2.433]	28.75 [1.132]
-075	67.50 [2.657]	63.13 [2.485]	65.8 [2.591]	30.75 [1.211]
**100	87.50 [3.445]	83.13 [3.273]	85.8 [3.378]	40.75 [1.604]

G97 HC B "6"1"6"
G75 @9 &") : %

fDF : , ! \$) ! \$) " \$! L ! 8 J ! ? ! @ G < C K B L
fG5A 9 5 G : ÷ " % & 9 L 7 9 D H 5 G G < C K B L
fB J 5 @ 6 @ C B ! \$) " \$ @ 5 8 G H @ C B @ M
f7 9 B H F : 9 5 H F 9 G F 9 A C J 9 8 : C F 7 @ F # M

fH 1 BC HF 9 @ 5 G 9 8 : C F D F C 8 1 7 H C B L



fDF : , ! \$) ! \$) " \$! L ! G < C K B L
fG5A 9 5 G 9 F : , ! \$) ! \$) " \$! L ! @ 9 L 7 9 D H 5 G G < C K B L
fB J 5 @ 6 @ C B ! \$) " \$ @ 5 8 G H @ C B @ M
f7 9 B H F : 9 5 H F 9 G F 9 A C J 9 8 : C F 7 @ F # M
H 1 BC HF 9 @ 5 G 9 8 : C F D F C 8 1 7 H C B

D F C D F 9 H 5 F M B C H 9
H : 6 B C 7 1 A 9 8 H 7 C B 1 6 B G B : C F A 5 H C B
7 C B : 8 9 8 H 5 9 5 8 8 D F C D F 9 4 5 F M C
G S A H 7 2 8 7 5 8 8 G : 5 8 8 C H 6 9 F 9 0 F C 8 1 7 9 8
C F H 5 8 G 9 F 9 8 H C H : 9 F 8 C 7 1 A 9 8 H C F
8 4 7 @ 9 8 H C H : 9 F G C F 1 9 8 : C F 5 8 M
D I F D C 9 C H : 9 F H : 5 B H : 5 H K < 7 < # K 5 G
C 6 1 5 B 9 8 K # C I H H : 9 9 L D F 9 0 9 8 K F # 6 8
7 C B 9 8 H C : G S A H 7 2 8 7 "

8 C B C H G 7 5 @ 9 8 F 5 K B :
G : 9 9 H 7 5 @ 9 & %



8 9 G 7 F D H C B :
9 F : , ! L L L ! L L " L ! L ! 8 J ! L L L
6 M ? B C K @ 8 9 B - # & * # & \$) G < 9 9 H " " C : '