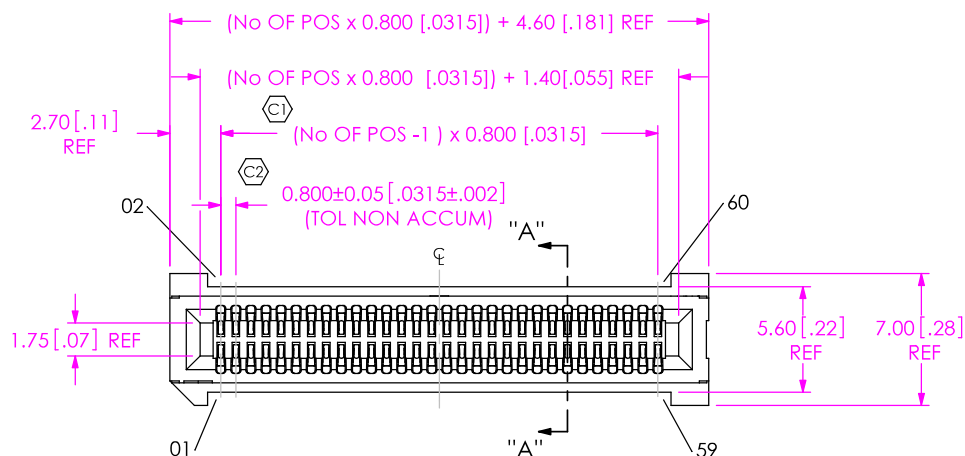


**DESIGNED & DIMENSIONED
IN MILLIMETERS
(INCHES FOR REFERENCE ONLY)**

HSEC8-1XXX-XX-XX-DV-X-XX



- No OF POSITIONS**
 -10, -20, & -30 (SEE FIG. 1)
 -13, -25, -37, -40, -49,
 -50, & -60 (SEE FIG. 2)
 -70, -80, -90 & -100 (PER ROW)
- CARD THICKNESS**
 -01: 1.57mm [0.062] THICK CARD
- PLATING SPECIFICATION**
- Q -SM: SELECTIVE GOLD/MATTE TIN TAIL (USE C-188-01-S)
 - H: HEAVY GOLD (USE C-188-01-H)
 - Q -S: SELECTIVE GOLD/MATTE TIN TAIL (USE C-188-01-S)

- OPTION**
- K: POLYAMIDE FILM PAD (USE K-DOT-217-.313-.005) (SEE FIG. 3)
 - TR: TAPE & REEL (-10 THRU -70 POS ONLY) (LEAVE BLANK FOR TRAY)
 - L: LATCHING OPTION (USE HSEC8-XX-01-DV-A-L) (AVAILABLE IN -13, -25, -37 & -49 POSITIONS ONLY) (SEE SHEET 3, FIG. 4)
 - BL: BOARD LOCK OPTION (USE HSEC8-XXX-01-DV-XX-BL) (SEE SHEET 4, FIG. 5)

- ROW SPECIFICATION**
 -DV: DUAL VERTICAL (USE HSEC8-XXX-01-DV-X)

- OPTION**
 -A: ALIGNMENT PINS (USE HSEC8-XXX-01-DV-A) (LEAVE BLANK FOR NO -A & USE HSEC8-XXX-01-DV-LC)

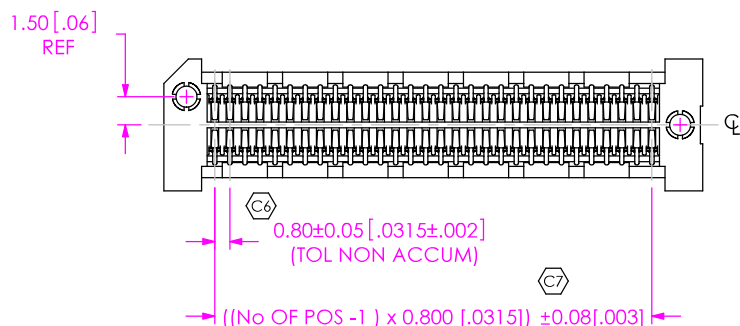
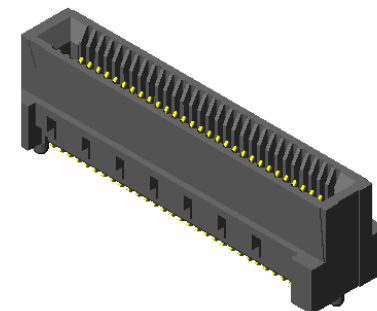
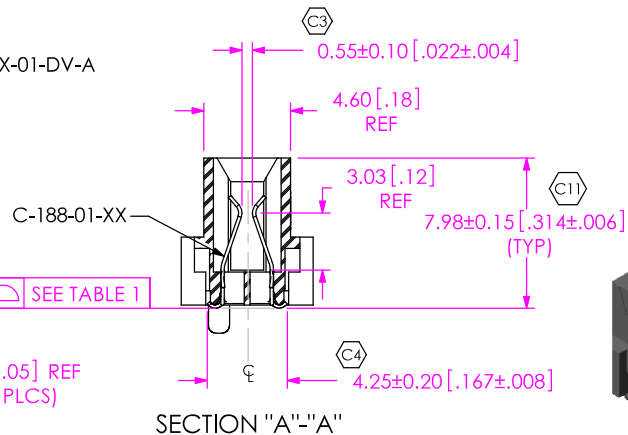
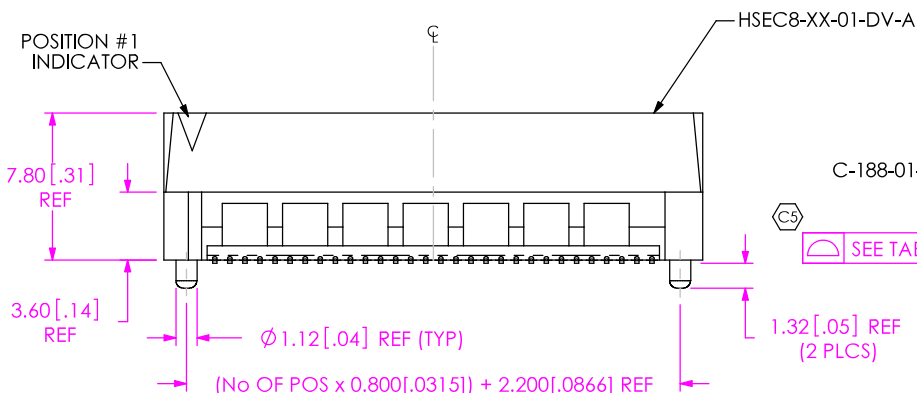


FIG. 1
 FOR POSITIONS -10, -20 & -30
 (SHOWN: HSEC8-130-01-XX-D-DV-A)

TABLE 1	
No OF POS	COPLANARITY
-10 THRU -60	0.102 [0.0040]
-70 THRU -100	0.152 [0.0060]

NOTES:

1. C REPRESENTS A CRITICAL DIMENSION.
2. BURR ALLOWANCE: 0.04[0.015] MAX.
3. MINIMUM PUSHOUT FORCE: 2.2 NEWTONS.
4. ALL TAIL TO TAIL DIMENSIONS MEASURED TIP TO TIP.
5. ASSEMBLIES TO BE PACKAGED IN TRAYS.

UNLESS OTHERWISE SPECIFIED, DIMENSIONS ARE IN MILLIMETERS.

TOLERANCES ARE:

- DECIMALS
- ANGLES
- .X: $\pm .3 [0.1]$
- .XX: $\pm .13 [0.005]$
- .XXX: $\pm .05 [0.0020]$

PROPRIETARY NOTE

THIS DOCUMENT CONTAINS INFORMATION CONFIDENTIAL AND PROPRIETARY TO SAMTEC, INC. AND SHALL NOT BE REPRODUCED OR TRANSFERRED TO OTHER DOCUMENTS OR DISCLOSED TO OTHERS OR USED FOR ANY PURPOSE OTHER THAN THAT WHICH IT WAS OBTAINED WITHOUT THE EXPRESSED WRITTEN CONSENT OF SAMTEC, INC.

MATERIAL: DO NOT SCALE DRAWING
 INSULATOR: LCP, COLOR: BLACK
 CONTACT: BeCu



DESIGNED WITH



SHEET SCALE: 1:0.4

DESCRIPTION:
 0.8mm HIGH SPEED ASSEMBLY

DWG. NO. HSEC8-1XXX-XX-XX-DV-X-XX

BY: BRATCHER 01/24/03

SHEET 1 OF 4

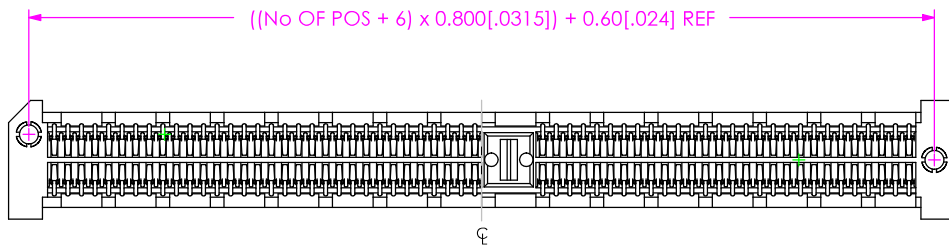
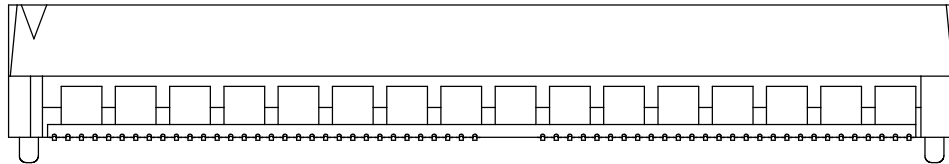
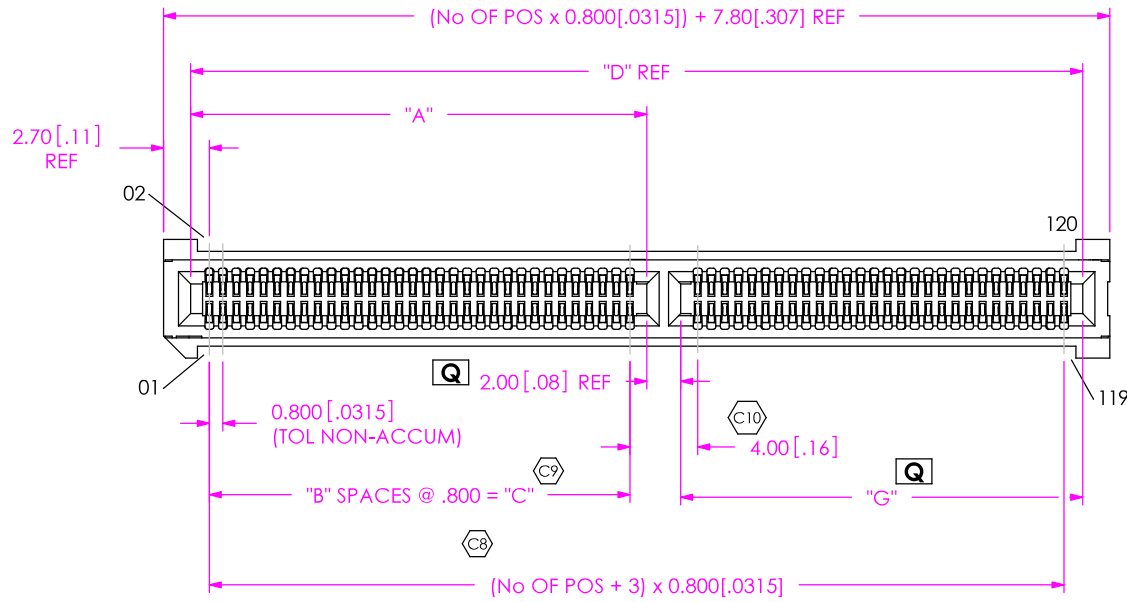


TABLE 2

No OF POS	"A" REF	"B"	"C"	"D" REF	"G" REF
-13	6.10[.240]	5	4.000[.1575]	15.00[.591]	6.90 [.270]
-25	6.10[.240]	5	4.000[.1575]	24.60[.969]	16.50 [.648]
-37	18.10[.713]	20	16.000[.6299]	34.20[1.346]	14.10 [.554]
-40	18.90[.744]	21	16.800[.6614]	36.60[1.441]	15.70 [.617]
-49	22.90[.902]	26	20.800[.8189]	43.80[1.724]	18.90 [.743]
-50	22.90[.902]	26	20.800[.8189]	44.60[1.756]	19.70 [.774]
-60	26.90[1.059]	31	24.800[.9763]	52.60[2.071]	23.70 [.932]
-70	26.90[1.059]	31	24.800[.9763]	60.60[2.386]	31.70 [1.247]
-80	26.90[1.059]	31	24.800[.9763]	68.60[2.701]	39.70 [1.562]
-90	26.90[1.059]	31	24.800[.9763]	76.60[3.016]	47.70 [1.877]
-100	26.90[1.059]	31	24.800[.9763]	84.60[3.331]	55.70 [2.192]

FIG. 2
FOR POSITIONS -13, -25, -37,
-40, -49, -50, -60, -70, -80, -90, -100
(SAME AS FIG. 1, UNLESS OTHERWISE STATED)
(SHOWN: HSEC8-160-01-XX-DV-A)

FIG. 3
-K OPTION
(USE K-DOT-.217-.313-.005)

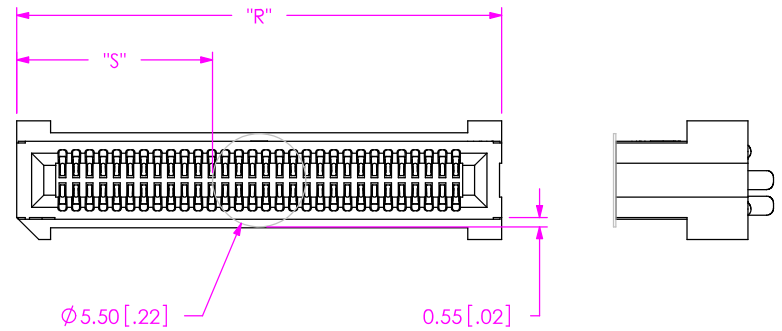
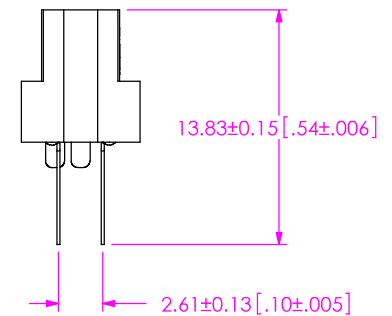


TABLE 3

OPTION	No OF POS	"R"	"S"
NONE	-10 THRU -30	(No OF POS x 0.80[.0315]) + 4.60[.181] REF	((("R" - 5.50[.217]) / 2) +/- 0.51[.020])
	-13, -25, -37, -40 THRU -100	(No OF POS x 0.80[.0315]) + 7.80[.307] REF	
-L	-13, -25, -37, & -49	(No OF POS x 0.80[.0315]) + 18.40[.724] REF	((("R" - 5.50[.217]) / 2) +/- 0.51[.020])
-BL	-10 THRU -30	(No OF POS x 0.80[.0315]) + 15.85[.624] REF	
	-13, -25, -37, -40 THRU -100	(No OF POS x 0.80[.0315]) + 19.05[.750] REF	

IN-PROCESS



F:\DWG\MISC\MKTG\HSEC8-1XXX-XX-XX-DV-X-XX-MKT.SLDDRW

PROPRIETARY NOTE

THIS DOCUMENT CONTAINS INFORMATION CONFIDENTIAL AND PROPRIETARY TO SAMTEC, INC. AND SHALL NOT BE REPRODUCED OR TRANSFERRED TO OTHER DOCUMENTS OR DISCLOSED TO OTHERS OR USED FOR ANY PURPOSE OTHER THAN THAT WHICH IT WAS OBTAINED WITHOUT THE EXPRESSED WRITTEN CONSENT OF SAMTEC, INC.

DO NOT SCALE DRAWING

SHEET SCALE: 1:0.444444

SAMTEC

520 PARK EAST BLVD, NEW ALBANY, IN 47150
* PHONE: 812.944.6733 FAX: 812.948.5047
e-Mail: INFO@SAMTEC.COM CODE: 55322

DESCRIPTION:
0.8mm HIGH SPEED ASSEMBLY

DWG. NO.
HSEC8-1XXX-XX-XX-DV-X-XX

BY: BRATCHER 01/24/03 SHEET 2 OF 4

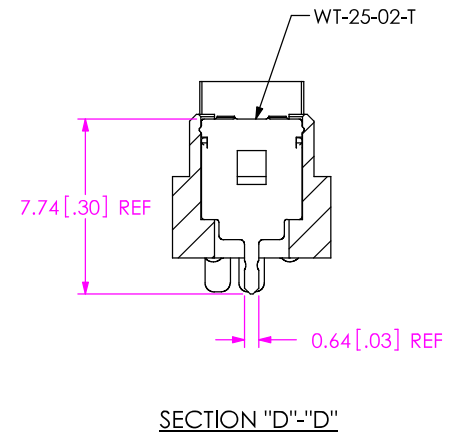
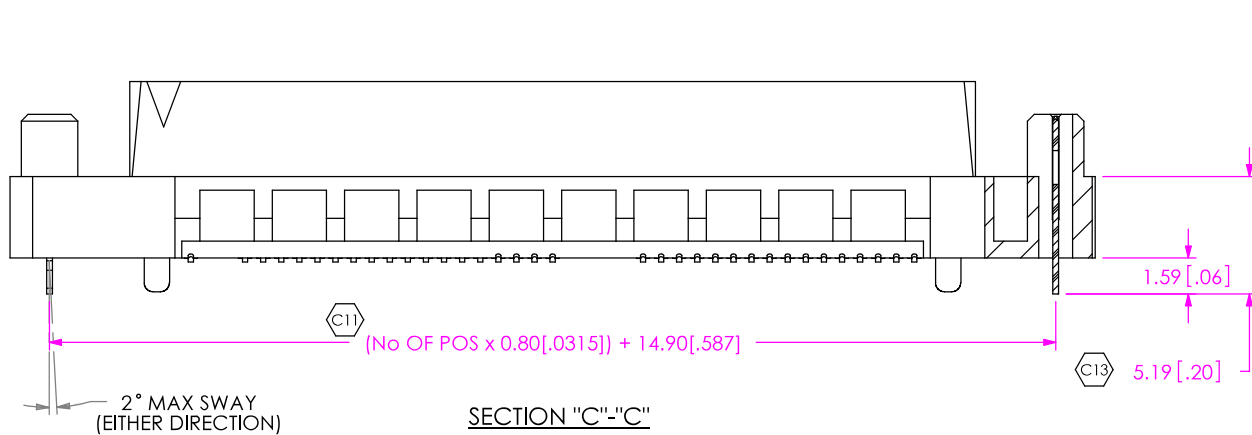
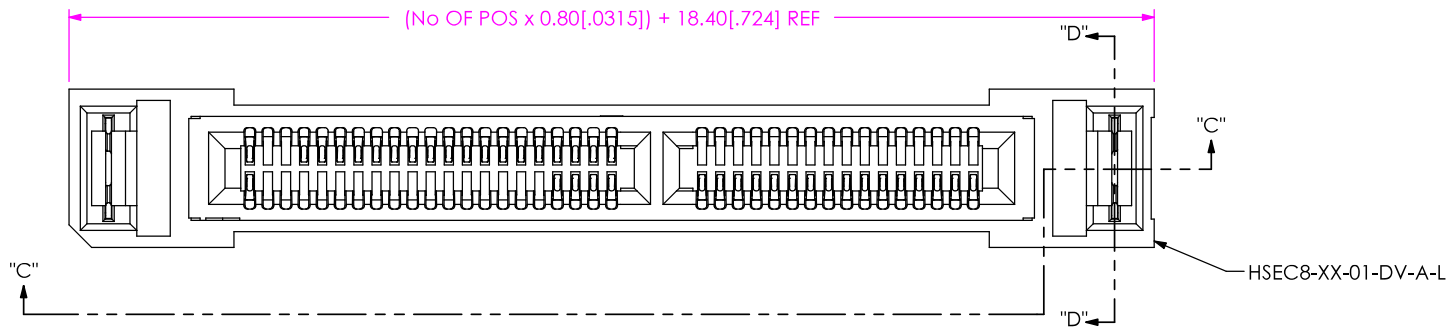


FIG. 4
 -L: LATCHING OPTION
 AVAILABLE IN -13, -25, -37 & -49 POSITIONS ONLY
 (SAME AS FIG. 2, UNLESS OTHERWISE STATED)
 (SHOWN: HSEC8-137-01-XX-DV-A-L)

PROPRIETARY NOTE
 THIS DOCUMENT CONTAINS INFORMATION
 CONFIDENTIAL AND PROPRIETARY TO
 SAMTEC, INC. AND SHALL NOT BE REPRODUCED
 OR TRANSFERRED TO OTHER DOCUMENTS OR
 DISCLOSED TO OTHERS OR USED FOR ANY
 PURPOSE OTHER THAN THAT WHICH IT WAS
 OBTAINED WITHOUT THE EXPRESSED WRITTEN
 CONSENT OF SAMTEC, INC.

DO NOT SCALE DRAWING

SHEET SCALE: 1:0.333333

SAMTEC

520 PARK EAST BLVD, NEW ALBANY, IN 47150
 * PHONE: 812.944.6733 FAX: 812.948.5047
 e-Mail: INFO@SAMTEC.COM CODE: 55322

DESCRIPTION:
 0.8mm HIGH SPEED ASSEMBLY

DWG. NO.
HSEC8-1XXX-XX-XX-DV-X-XX

BY: BRATCHER 01/24/03

SHEET 3 OF 4

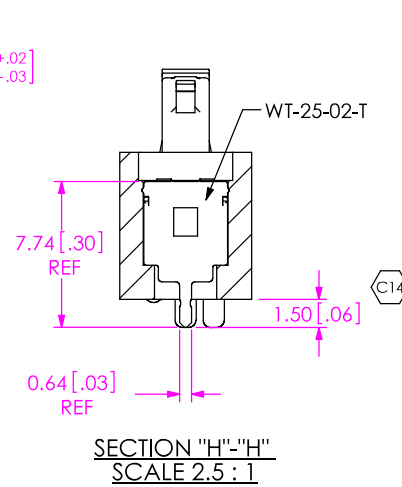
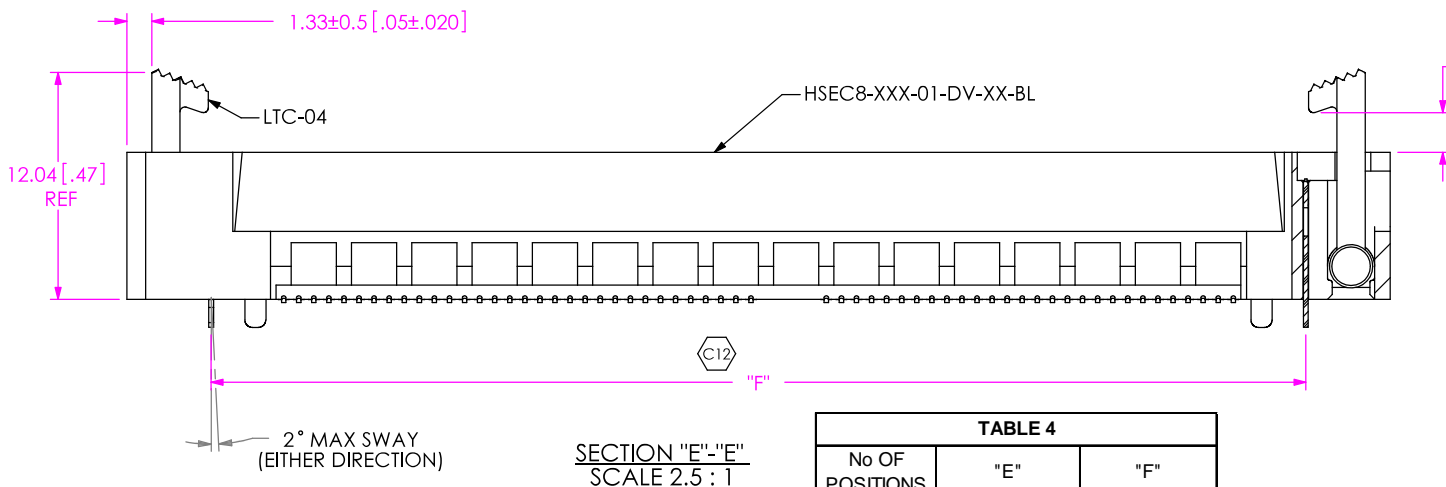
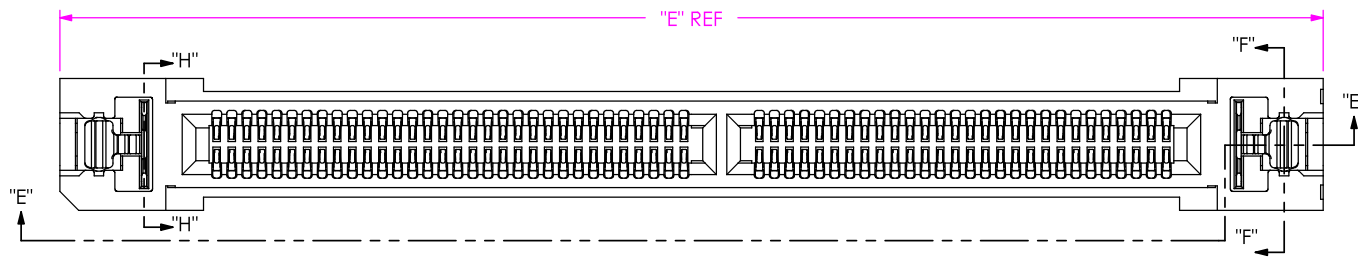
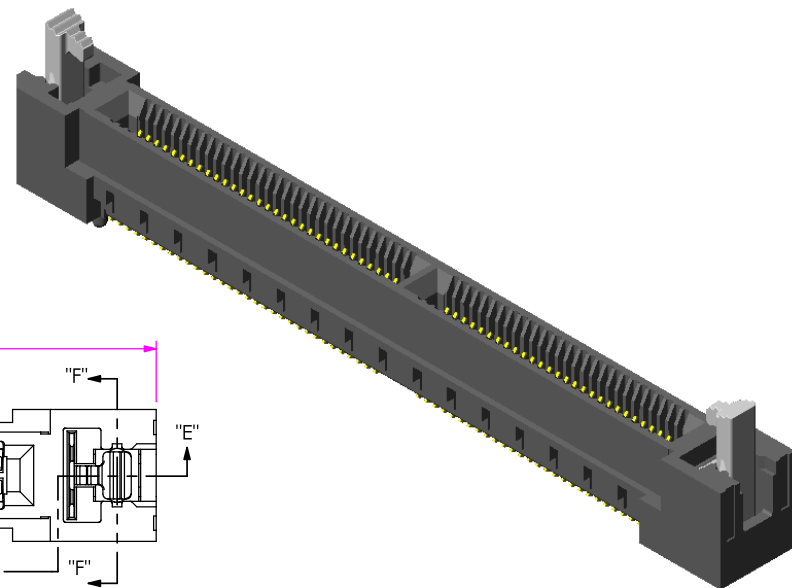
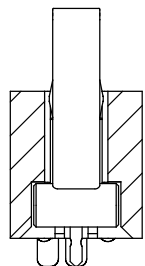


TABLE 4

No OF POSITIONS	"E"	"F"
-10	23.85 [0.939]	14.90 [0.587]
-13	29.45 [1.159]	20.50 [0.807]
-20	31.85 [1.254]	22.90 [0.902]
-25	39.05 [1.537]	30.10 [1.185]
-30	39.85 [1.569]	30.90 [1.217]
-37	48.65 [1.915]	39.70 [1.563]
-40	51.05 [2.010]	42.10 [1.657]
-49	58.25 [2.293]	49.30 [1.941]
-50	59.05 [2.325]	50.10 [1.972]
-60	67.05 [2.640]	58.10 [2.287]
-70	75.05 [2.955]	66.10 [2.602]
-80	83.05 [3.270]	74.10 [2.917]
-90	91.05 [3.585]	82.10 [3.232]
-100	99.05 [3.900]	90.10 [3.547]

FIG. 5

-BL: BOARD LOCK OPTION
(SAME AS FIG. 2, UNLESS OTHERWISE STATED)
(SHOWN: HSEC8-160-01-XX-DV-A-BL)



SECTION "F"-"F"
SCALE 2.5:1

PROPRIETARY NOTE
THIS DOCUMENT CONTAINS INFORMATION CONFIDENTIAL AND PROPRIETARY TO SAMTEC, INC. AND SHALL NOT BE REPRODUCED OR TRANSFERRED TO OTHER DOCUMENTS OR DISCLOSED TO OTHERS OR USED FOR ANY PURPOSE OTHER THAN THAT WHICH IT WAS OBTAINED WITHOUT THE EXPRESSED WRITTEN CONSENT OF SAMTEC, INC.

DO NOT SCALE DRAWING

SHEET SCALE: 1:0.333333

SAMTEC

520 PARK EAST BLVD, NEW ALBANY, IN 47150
* PHONE: 812.944.6733 * FAX: 812.948.5047
e-Mail: INFO@SAMTEC.COM CODE: 55322

DESCRIPTION:
0.8mm HIGH SPEED ASSEMBLY

DWG. NO.
HSEC8-1XXX-XX-XX-DV-X-XX

BY: BRATCHER 01/24/03 SHEET 4 OF 4