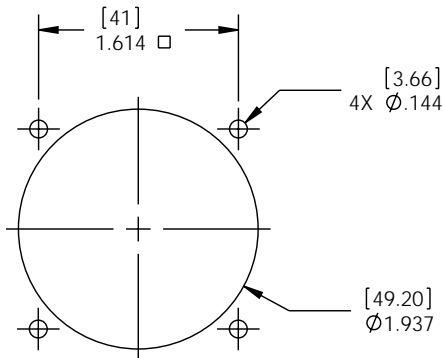
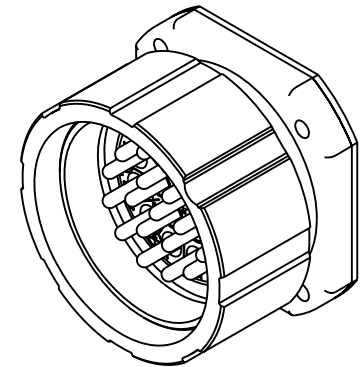
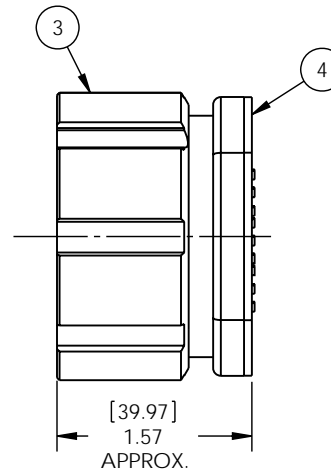
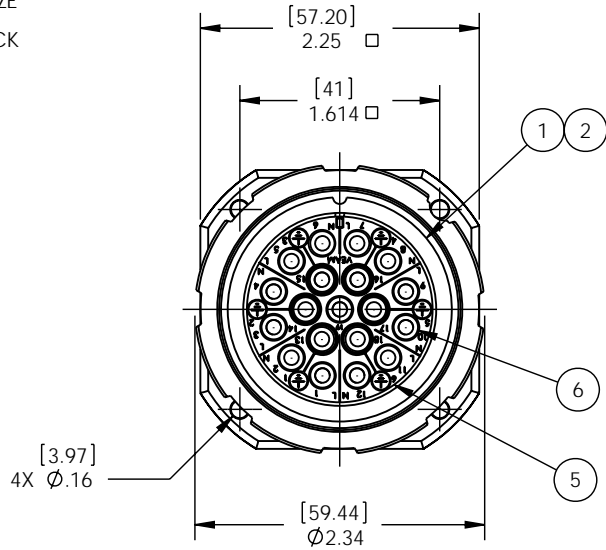


**NOTES:** UNLESS OTHERWISE SPECIFIED

1. ALL DIMENSIONS ARE FOR REFERENCE ONLY.

MATERIAL & FINISHES

- ① PANEL PLUGSHELL — MATERIAL-ALUMINUM  
FINISH-BLACK HARD ANODIZE
- ② GASKET PLUGSHELL — MATERIAL-NEOPRENE
- ③ COUPLING NUT — MATERIAL-ALUMINUM  
FINISH-BLACK HARD ANODIZE
- ④ PANEL GASKET — MATERIAL-NEOPRENE, BLACK
- ⑤ INSERT — MATERIAL- TPV
- ⑥ PIN CONTACT — SIZE-10, SOLDER  
PART NO. 49150T58  
QUANTITY-19  
WIRE SIZE-12-14 AWG.  
MATERIAL-COPPER ALLOY  
FINISH-GOLD PLATED



RECOMMENDED PANEL CUT-OUT

**CATALOG NO. VSC26PS**

THIS DOCUMENT AND THE INFORMATION CONTAINED HEREIN IS THE SOLE PROPERTY OF ITT VEAM LLC. AND IS NOT TO BE COPIED, REPRODUCED, DISCLOSED OR TRANSFERRED BY ELECTRONIC MEDIA WITHOUT THE EXPRESSED PERMISSION OF ITT VEAM LLC. VIOLATIONS SUBJECT TO PENALTIES PROVIDED UNDER U.S. AND INTERNATIONAL LAW.

DOCUMENT GENERATED BY SOLIDWORKS

REV.	DESCRIPTION	DATE	APPROVED
A	RELEASE PER ER #887	NR 03/10/04	AR
B	REVISED ITEM# 5. REVISED CATALOG No. ECR# 06-183	JG 8/31/06	AR
C	ADDED 4X Ø.16 ADDED PANEL CUT OUT. ECR# 07-057	JG 3/19/07	LAW

<b>CUSTOMER DRAWING</b>		<b>VEAM</b> <small>100 NEW WOOD ROAD, WATERTOWN, CT. 06795</small>		<b>Cannon</b> <b>ITT Industries</b> <small>Engineered for life</small>	
UNLESS OTHERWISE SPECIFIED: DIMENSIONS ARE IN (MM) INCHES		TITLE: MALE PANEL, VSC SIZE 32			
SCALE: 1:1		SIZE <b>B</b>		DWG. NO. Z80704	
DRAWN NR	03/09/04	DATE	DATE	REV C	
CHECKED A.R	03/11/04	DATE	DATE		
APPROVED A.R	03/11/04	DATE	DATE	PROJECT# 4423	CAGE CODE: 55561
				SHEET 1 OF 1	