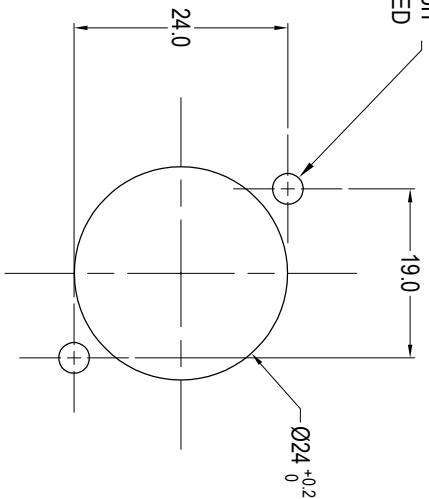


PANEL CUTOUT  
MAXIMUM PANEL  
THICKNESS 3mm

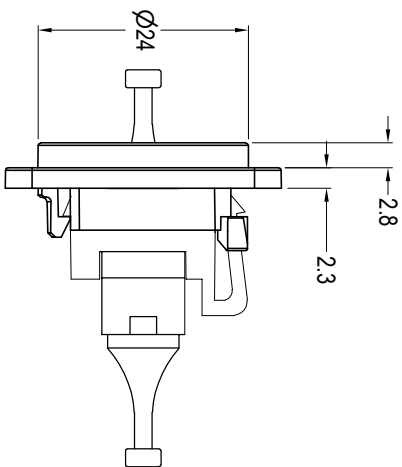
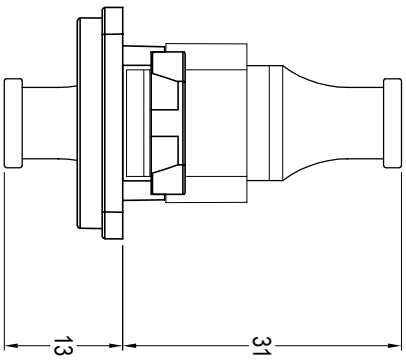
HOLES TO SUIT  
SCREW USED



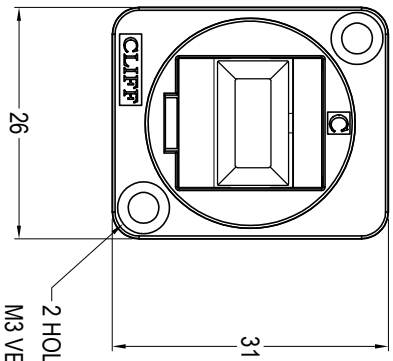
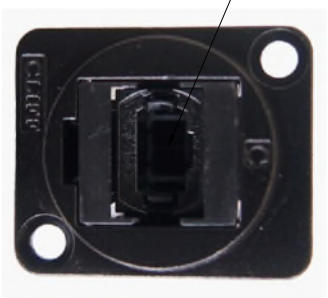
ISS.	AMEND	DATE
1	ISSUED	27/04/21

VARIANTS		
PART NO.	HOLE DETAILS	
CP30245MB	HOLE Ø3.50 X CSK 82° X Ø5.85	
CP30245M3B	M3 HOLES	

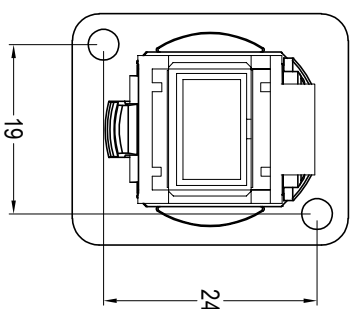
- Material:
1. Coupler Body: PES Black UL94-V0
  2. Dust Cover: PEI
  3. Insert: ABS/PC Black UL94-V0
  4. Frame: Black Nickel plated zinc diecast



VIEW WITHOUT  
DUST COVER



M3 VERSION HAS M3 THREAD HOLES.



**ROHS**  
**COMPLIANT**

TOLERANCE  
NO DEC. PLACE ±  
1 DEC. PLACE ±  
2 DEC. PLACE ±  
HOLE Ø ±  
ANGLES ±  
UNLESS  
OTHERWISE STATED

DO NOT SCALE

**Cliff Electronic Components Ltd.**  
76Hornetoppe Avenue, Hornetoppe Industrial Estate,  
Redhill, Surrey, RH1 2PF, England, UK  
Tel: 01737-771375 Fax: 01737-766012 Website: www.cliffuk.co.uk

THE CONTENTS OF THIS DOCUMENT MUST NOT BE COPIED OR DISCLOSED TO A 3rd PARTY WITHOUT WRITTEN PERMISSION OF CLIFF UK © 2021

DIMENSIONS IN MILLIMETERS UNLESS OTHERWISE STATED. WORK TO DIMENSIONS. REMOVE ALL BURRS. IF IN DOUBT ASK.  
MATERIAL: See Notes  
FINISH: See Notes  
DRAWN: D.P.J.  
APPROVED: D.P.J.

3rd ANGLE PROJECTION: DO NOT SCALE  
TITLE: FT BLACK METAL MTP USCONEC ADAPTOR (BLACK)  
DRWG. No. CP30245MB  
FORM: ADDRWHG