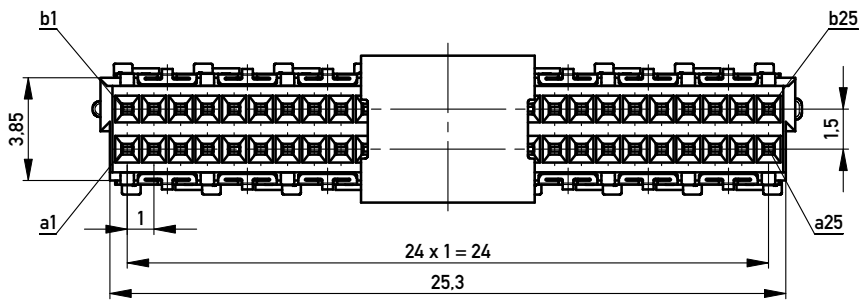
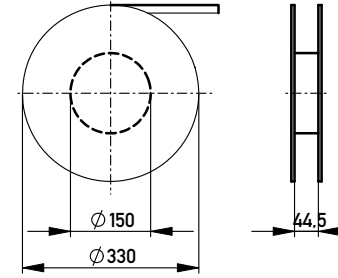
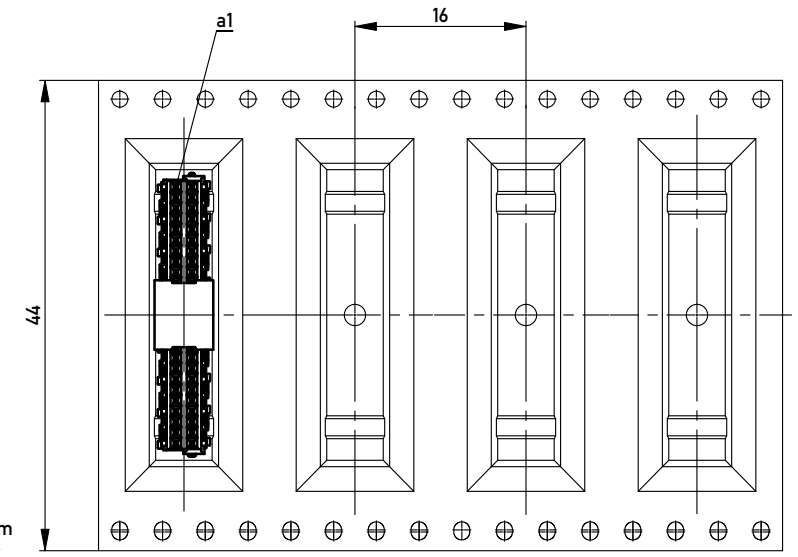


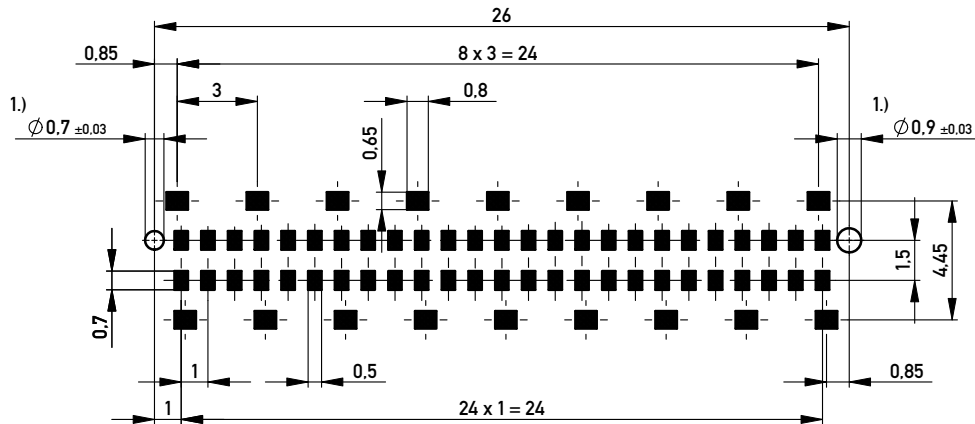
Verpackt in Gurtverpackung - *Tape on Reel Packaging*  
 Verpackungseinheit: 400 Stück - *Packaging unit: 400 pcs*



Abspulrichtung - *Reel off Direction* →



Leiterplatten-Layout Vorschlag / *PCB-Layout Proposal*



Anforderungsstufe 1  
*Performance Level 1*

Kontaktbereich vergoldet  
*Mating Area gold plating*

Anschlussbereich verzinkt 4-6µm  
*Terminal Area 4-6µm tin plating*

Koplanarität der Anschlüsse ≤ 0,1mm  
*Coplanarity Area of Termination ≤ 0,1mm*

1.) Durchmesser des Bohrers / *Drill tool*

Information:  All rights reserved. Only for Information. To ensure that this is the latest version of this drawing, please contact one of the ERNI companies before using.	Tolerances  All Dimensions in mm	Scale	5:1
		Designation <b>Federleiste 6mm SMD, 50 polig</b> <i>Female 6mm SMD, 50 contacts</i>	
	<a href="http://www.ERNI.com">www.ERNI.com</a>	<b>224512</b>	
d Index	22.09.2010 Date	Class	MSPEED

Copyright by ERNI GmbH  
 Proprietary notice pursuant to ISO 16016 to be observed.