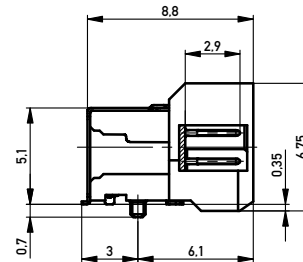
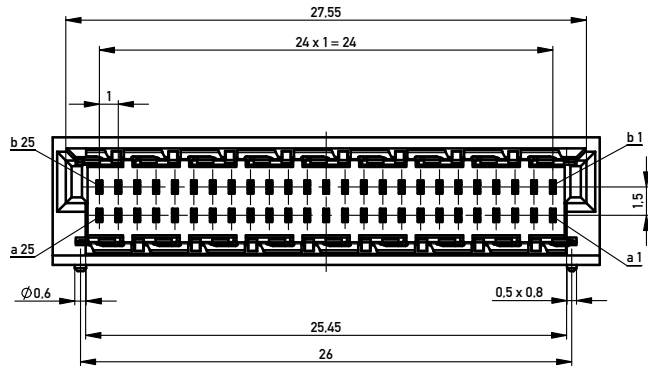
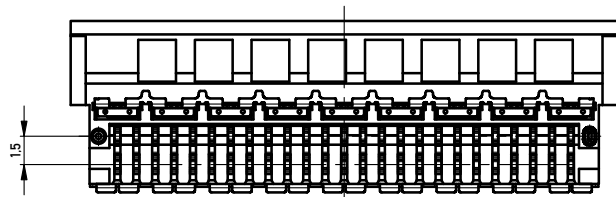
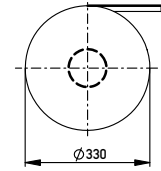
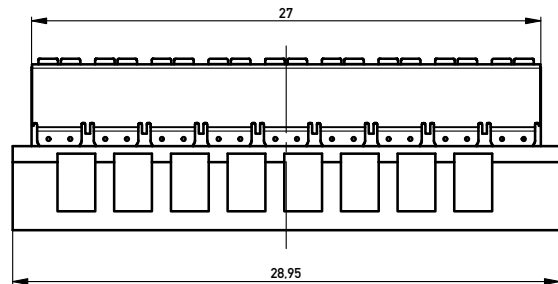
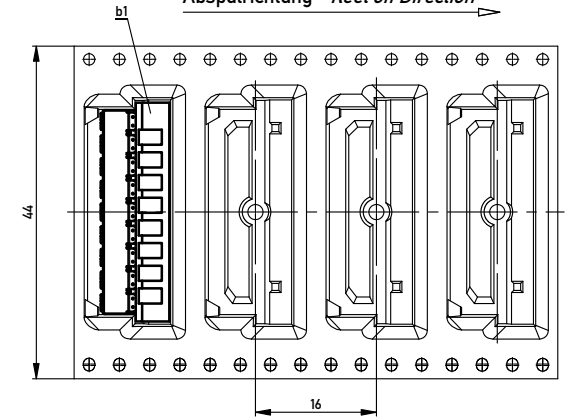


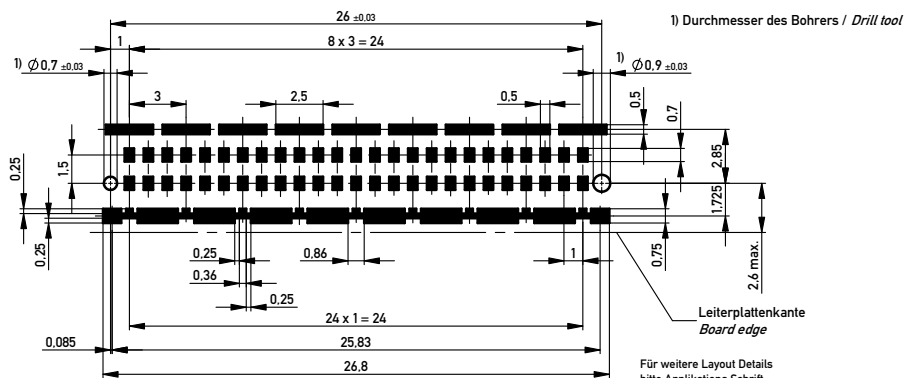
Verpackt im Gurt in Anlehnung an DIN IEC 60286-3  
 Tape on Reel Packaging according to DIN IEC 60286-3  
 Verpackungseinheit: 400 Stück  
 Packaging unit: 400 pcs



Abspulrichtung - Reel off Direction



Leiterplatten-Layout Vorschlag / PCB-layout proposal



Für weitere Layout Details bitte Applikations Schrift MicroSpeed beachten.  
 For further layout details please consider MicroSpeed application note.

Anforderungsstufe 1  
 Performance Level 1

Kontaktbereich vergoldet  
 Mating Area gold plating

Anschlussbereich verzinkt 4-6 µm  
 Terminal Area 4-6 µm tin plating

Koplanarität der Anschlüsse ≤ 0.1 mm  
 Coplanarity Area of Termination ≤ 0.1 mm

Information:	Tolerances		Scale	5:1
All rights reserved. Only for Information. To ensure that this is the latest version of this drawing, please contact one of the ERNI companies before using.	Subject to modification without prior notice. Drawing will not be updated.	All Dimensions in mm	Designation	Messertl. 90° 50p SMD BM EMV Male 90° 50 cont SMD BM EMV
h	24.05.2015	ERNI	www.ERNI.com	284332
Index	Date		Class	MSPEED

Copyright by ERNI Production GmbH & Co. KG  
 Proprietary notice pursuant to §90 100ff. to be observed