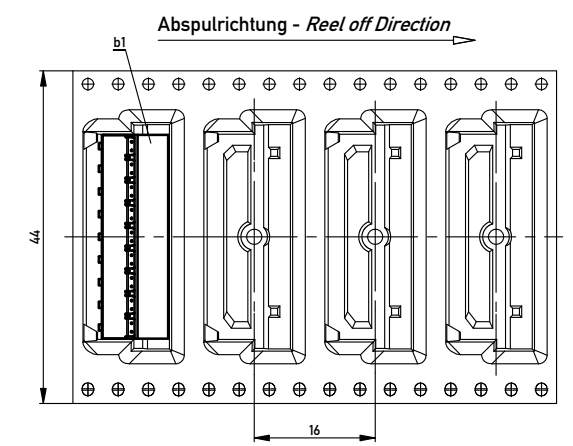
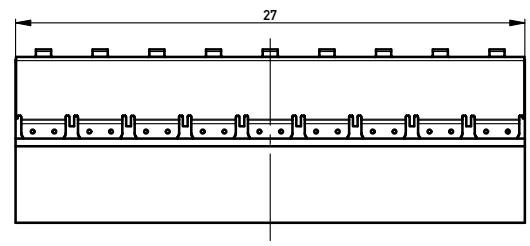
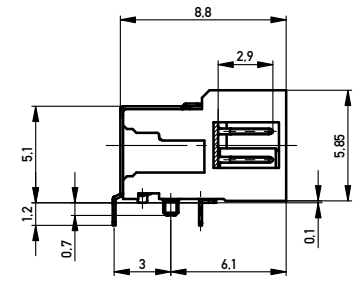
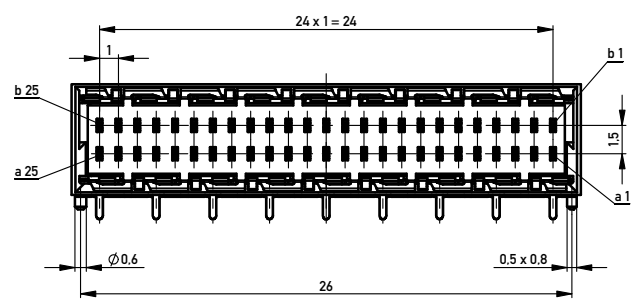
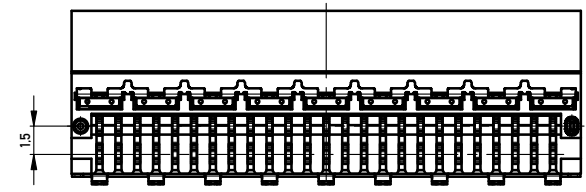
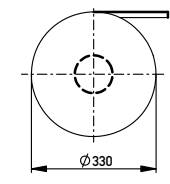
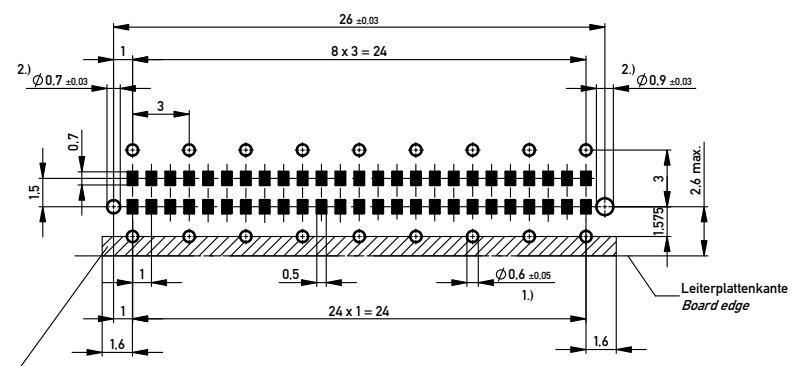


Verpackt im Gurt in Anlehnung an DIN IEC 60286-3  
 Tape on Reel Packaging according to DIN IEC 60286-3  
 Verpackungseinheit: 400 Stück  
 Packaging unit: 400 pcs



Leiterplatten-Layout Vorschlag / PCB-layout proposal



Schirmblechauflagefläche berücksichtigen.  
 keine Durchkontaktierungen oder Leitungen möglich!  
 Consider shielding contact area, no via's or traces possible!

- 1.) Fertigllochdurchmesser / Finished via diameter
- 2.) Durchmesser des Bohrers / Drill tool

- Anforderungsstufe 1  
Performance Level 1
- Kontaktbereich vergoldet  
Mating Area gold plating
- Anschlussbereich verzinkt 4-6 µm  
Terminal Area 4-6 µm tin plating
- Koplanarität der Anschlüsse ≤ 0,1 mm  
Coplanarity Area of Termination ≤ 0,1 mm

Information:		Tolerances		Scale	5:1
All rights reserved. Only for Information. To ensure that this is the latest version of this drawing, please contact one of the ERNI companies before using.		All Dimensions in mm		Designation	
		Subject to modification without prior notice. Drawing will not be updated.		Messerl. 90° SMDTHR 50-pot EMV Male 90° SMDTHR 50 cont. EMV	
				www.ERNI.com	
				374721	
				I A2	
Date: 24.05.2015		Date:		Class: MSPEED	

Copyright by ERNI GmbH  
 Proprietary notice pursuant to ISO 16949 to be observed