

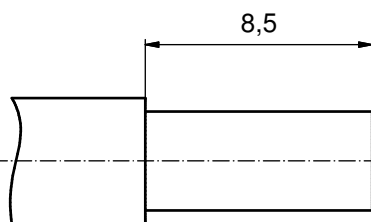
NOTES:

CRIMPING:
 USE CRIMP TOOL: 360X10409X
 WITH TOOL INSERT: 360X20029X
 SELECTOR SETTINGS: 5 FOR AWG 12
 4 FOR AWG 14

| plating | part no. |
|--|-------------------|
| GOLD FLASH over NICKEL | 132A11029X |
| 30µin HARD GOLD over min. 50µin NICKEL | 132C11029X |
| 50µin HARD GOLD over min. 50µin NICKEL | 132J11029X |

RoHS compliant

STRIPPING DIMENSIONS



| pos | qty | description | material | plating |
|-----|-----|----------------|--------------|------------------------|
| 3 | 1 | RETAINING RING | COPPER ALLOY | NICKEL PLATED |
| 2 | 1 | REAR SIDE | COPPER ALLOY | GOLD FLASH over NICKEL |
| 1 | 1 | MATING SIDE | COPPER ALLOY | see table |

| partlist | | tolerance | dim. in mm | scale: | 5:1 | | |
|--|-------------|-----------|------------|--------------|----------------------------------|------------------|-----------|
| THIS DRAWING MAY NOT BE COPIED OR REPRODUCED IN ANY WAY, AND MAY NOT BE PASSED ON TO A THIRD PARTY WITHOUT WRITTEN PERMISSION. OWNERSHIP AND COPYRIGHT OF CONEC GmbH | | date | name | material: | see notes | | |
| DO NOT ALTER CAD DRAWING BY HAND | | drawn | 26.07.06 | Lehmenkühler | title: | | |
| | | appd. | 26.07.06 | Kühle | HIGH POWER CONTACT FEMALE | | |
| | | norm | | | CRIMP VERSION 20A | | |
| 4 x c | Ä5997 | 22.02.16 | K.H. | d-old | 13K11E8A/13K1A188A | dwg no: | DIN-A3 |
| 2 x b | Ä3554 | 19.01.11 | K.H. | | | 13K1A1836 | sh: 1 |
| a | Origin | | | | | part no: | see table |
| rev. | description | date | name | | | | |

