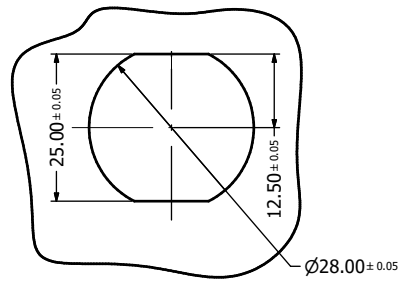
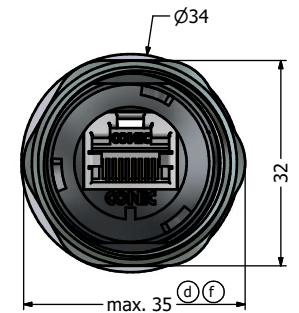
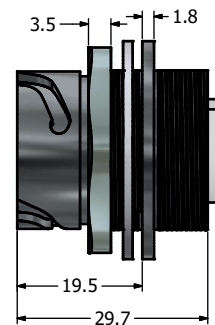
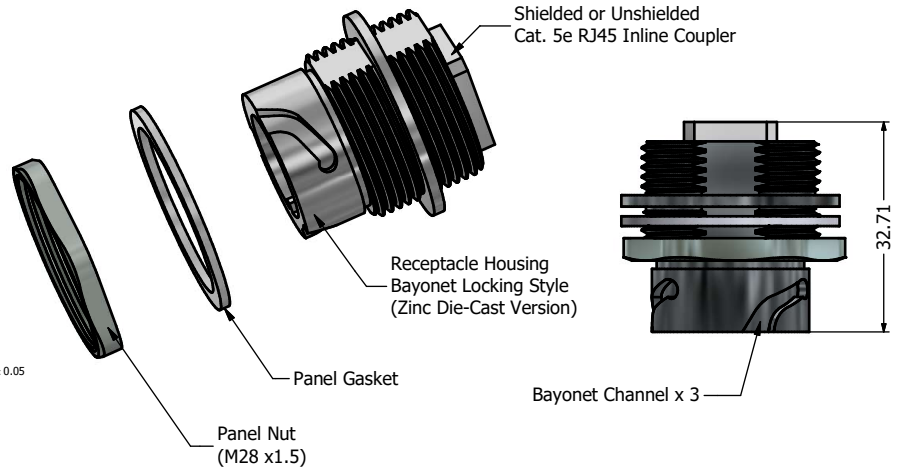


Recommended Single-D (d) Panel Cutout



Recommended Double-D (d) Panel Cutout



Notes:

- Electrical Specifications:**
 - Meets EIA/TIA-568-B.2 Cat.5e Specification
 - Contact Resistance: 20mOhm max.
 - Insulation Resistance: 500MOhm min. @ 100 VDC
 - Current Rating: 1.2A max. at 25°C
 - Working Voltage: 100 VDC
 - DWV: 1000 VDC/60s Contact to Contact, 1500 VDC/60s Contact to Metal Shell
 - Operating Temperature: -40°C to +85°C
- Material and Finish:**
 - Receptacle Housing & Protective Cover: Zinc Die-Cast, Finish: Nickel Plated
 - Ball Chain Assembly: Copper Alloy and Stainless Steel, Nickel Plated
 - Panel Nut: Brass, Finish: Nickel Plated
 - Panel Gasket: Silicon, Color: White
 - Cover Gasket: Silicon, Color: White
 - RJ45 Jack Metal Shell: Copper Alloy, Nickel Plated
 - RJ45 Jack Plastic Housing: Glass filled PBT UL94 V-0, Color: Black
 - RJ45 Jack Contacts: Phosphor Bronze, Finish: 50u" Gold min. over Nickel
- Connector can be front or rear mounted to a maximum panel thickness of 3.2mm.
- IP67 rated when covered or fully mated with the appropriate mating connector
- Recommended Mounting Panel Nut Torque is 20 to 25 lb-inch

RoHS compliant

| (c) (d) | Description | Part Number |
|---------|---|-------------|
| | Nickel Plated Zinc Die-Cast with Shielded Cat5e Coupler & Protective Cover | 17-101814 |
| | Nickel Plated Zinc Die-Cast with Unshielded Cat5e RJ45 Coupler & Protective Cover | 17-101824 |

| | | | | | | | | |
|---|-----------|-------------|---------------|---|-------------|---------|--|--|
| THIS DRAWING MAY NOT BE COPIED OR REPRODUCED IN ANY MANNER WITHOUT THE WRITTEN PERMISSION OF CONEC CORPORATION. OWNERSHIP AND COPYRIGHT OF CONEC CORPORATION. | Customer: | | | Tolerance Unless otherwise specified | | | Scale: 1.2:1 | Dim. in mm |
| | Name | Title | Approval Date | 0 PLC ±0.50 | 1 PLC ±0.38 | | Material: See Notes Title: Jack Receptacle & Cover Kit with Cat. 5e RJ45 Inline Coupler Nickel Plated Zinc Die-Cast Version | Drawing No.: 17K1A149 Part No.: SEE P/N TABLE |
| | 1 x f | A21-04.26 | 26.10.2021 | Bub | 2 PLC ±0.25 | | | |
| | e | 1 x e | Feb/10/2014 | Vincent Ke | 3 PLC ±0.10 | | | |
| | d | 4 x d | Feb/23/2011 | Vincent Ke | ANGLES ±3° | 2009 | Date | Name |
| c | 1 x c | Dec/16/2010 | Vincent ke | | Appd. | Dec. 07 | J. Chaudry | |
| b | 1 x b | Jan/28/2010 | Vincent Ke | | Norm | | | |
| a | original | | | | | | | |
| Rev | Changes | Date | Name | | | | | |