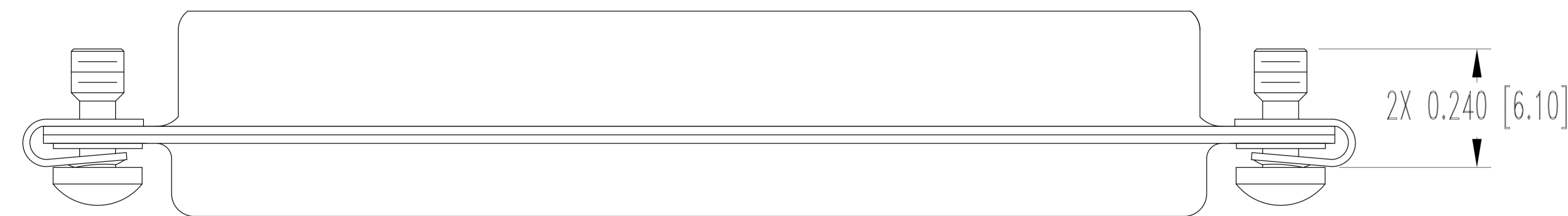
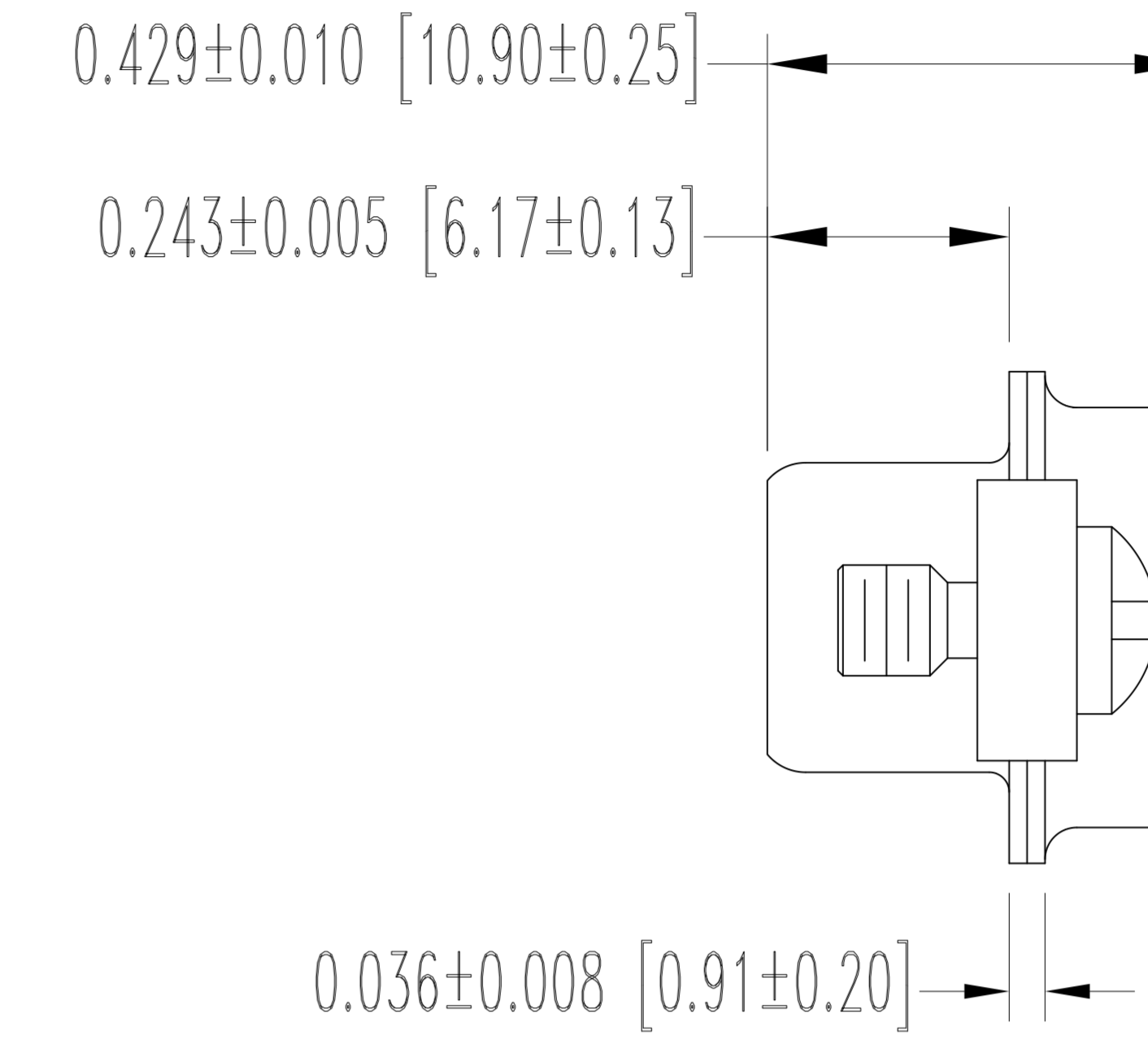
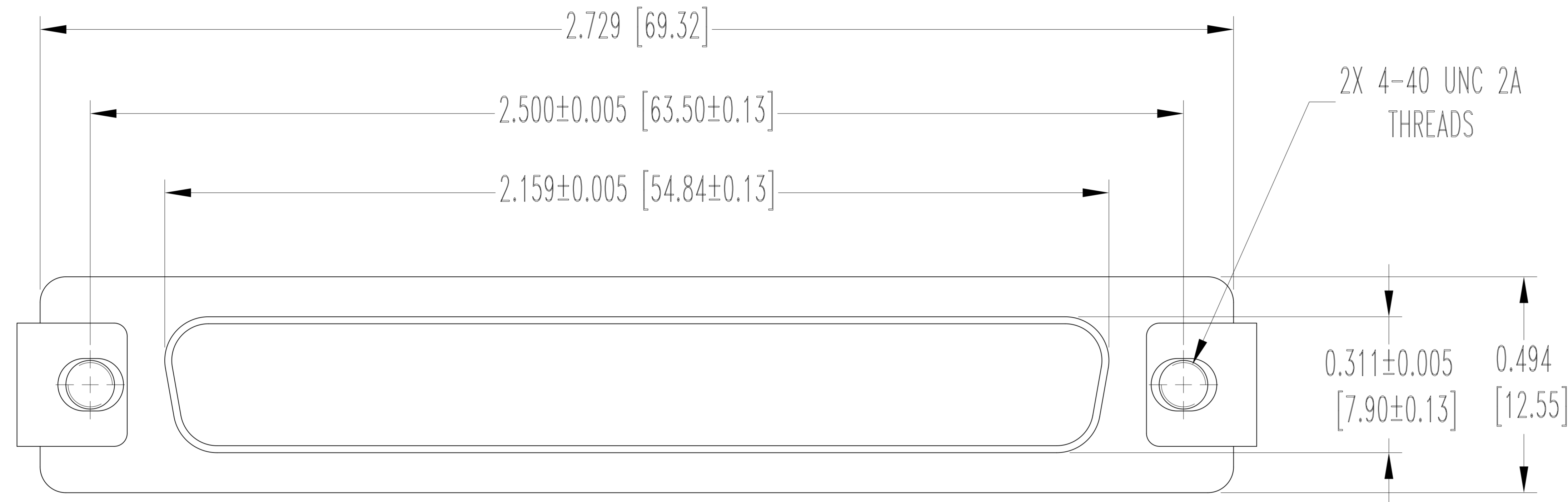


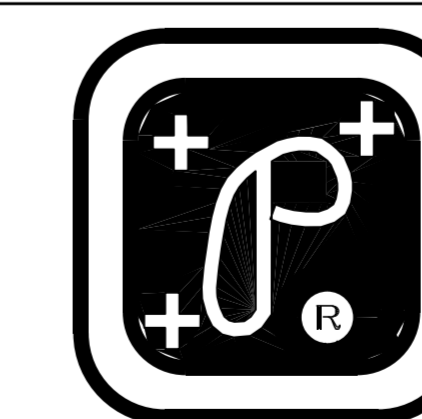
THIS DRAWING CONTAINS INFORMATION PROPRIETARY TO POSITRONIC AND ITS SUBSIDIARIES. POSITRONIC BELIEVES THE DATA ON THIS DRAWING TO BE RELIABLE, SINCE THE TECHNICAL INFORMATION IS GIVEN FREE OF CHARGE, THE USER EMPLOYS SUCH INFORMATION AT HIS OWN DISCRETION AND RISK. POSITRONIC ASSUMES NO RESPONSIBILITY FOR RESULTS OBTAINED OR DAMAGES INCURRED FROM USE OF SUCH INFORMATION IN WHOLE OR IN PART.

DATE	REV	REVISION RECORD	APP	DR	CK
12-07-20	A	ECO 78749	PA	GJ	AB

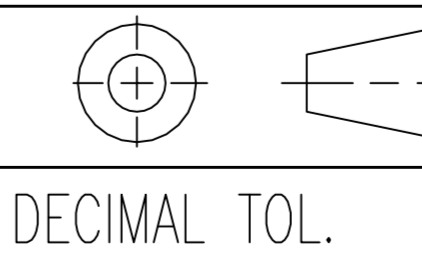


NOTES:

- MATERIALS AND FINISHES:
 SHELLS: BRASS, 0.000050 [1.27μ] GOLD OVER COPPER PLATE.
 U-CLIPS: BRASS, 0.000050 [1.27μ] GOLD OVER COPPER PLATE.
 CAPTIVE SCREWS: BRASS, 0.000050 [1.27μ] GOLD OVER COPPER PLATE.
- DETAILED PRODUCT, MECHANICAL AND ELECTRICAL INFORMATION IS AVAILABLE IN THE LATEST HIGH PERFORMANCE D-SUB PRODUCT PUBLICATION AT CONNECTPOSITRONIC.COM.
- DIMENSIONS ARE IN INCHES [MILLIMETERS].



POSITRONIC INDUSTRIES INC.
 SPRINGFIELD, MISSOURI 65801



DECIMAL TOL.
 ± 0.015 [0.38]

TITLE
 D SERIES

SCALE
 N.T.S.

DRAWN BY
 GANESH J.
 APPROVED BY
 PA

ANGULAR TOL.
 ± 5°

DATE
 12-07-20

DRAWING NUMBER
 PSK633-37FGN

REV.
 A