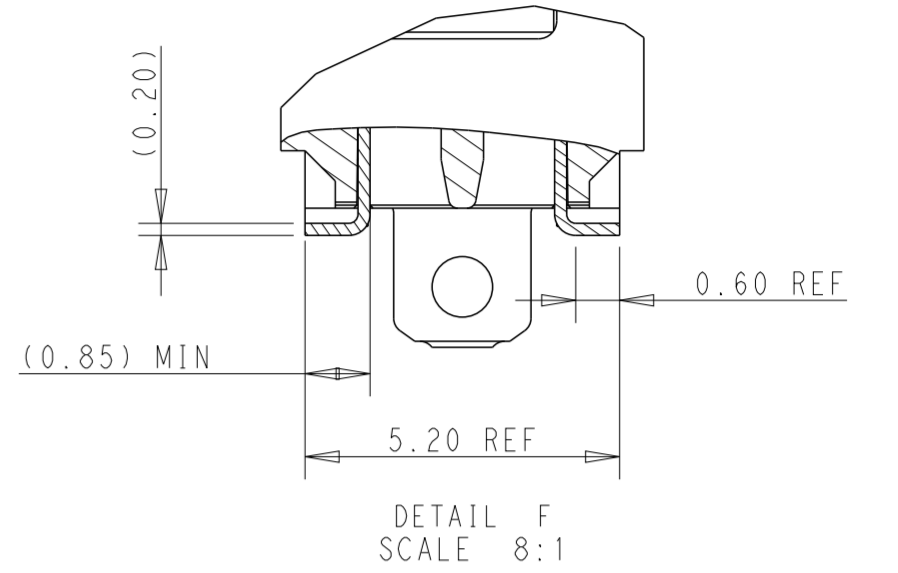
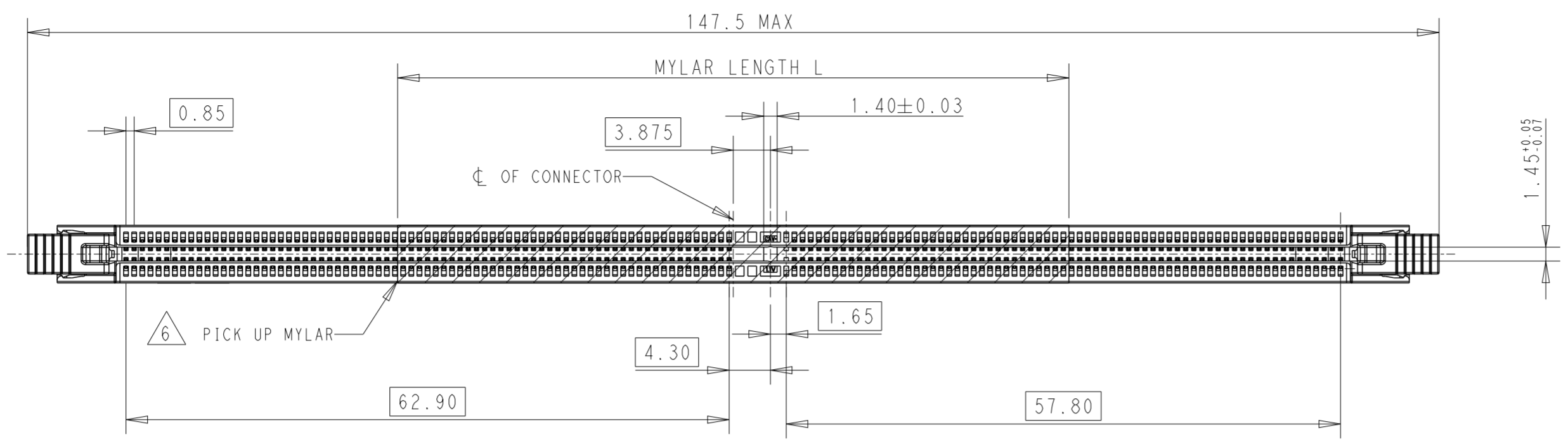


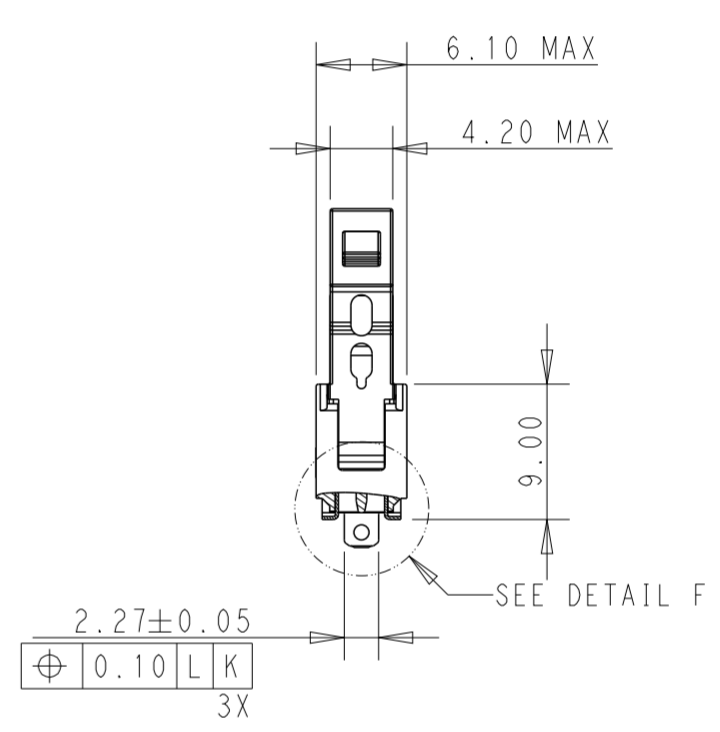
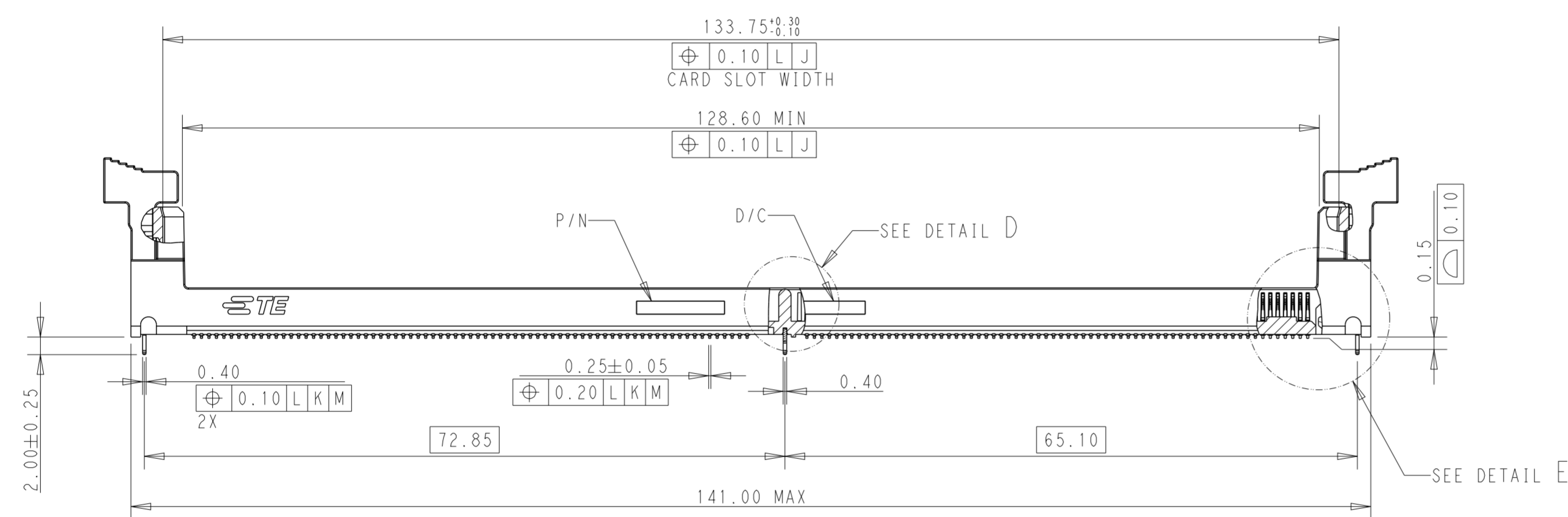
THIS DRAWING IS UNPUBLISHED. RELEASED FOR PUBLICATION
 © COPYRIGHT 20 BY TE Connectivity ALL RIGHTS RESERVED.

REVISIONS				
P	LTR	DESCRIPTION	DATE	APVD
18		TRAY DRWING CHANGE	17JUN2022	SS
19		ADD SHORT LATCH TYPE	05AUG2022	SS
A		RELEASE TO PRODUCTION	23AUG2022	SS
A1		ADD NEW PNs	26AUG2022	SS

D

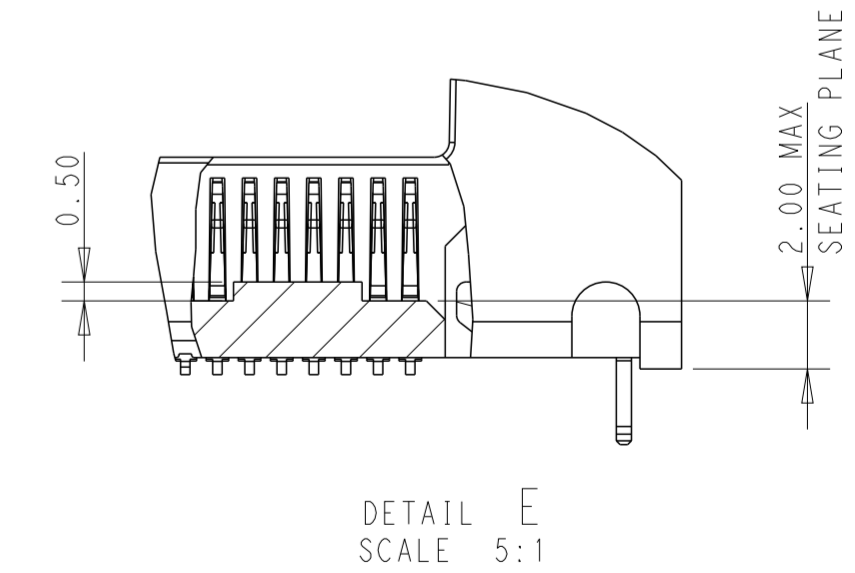
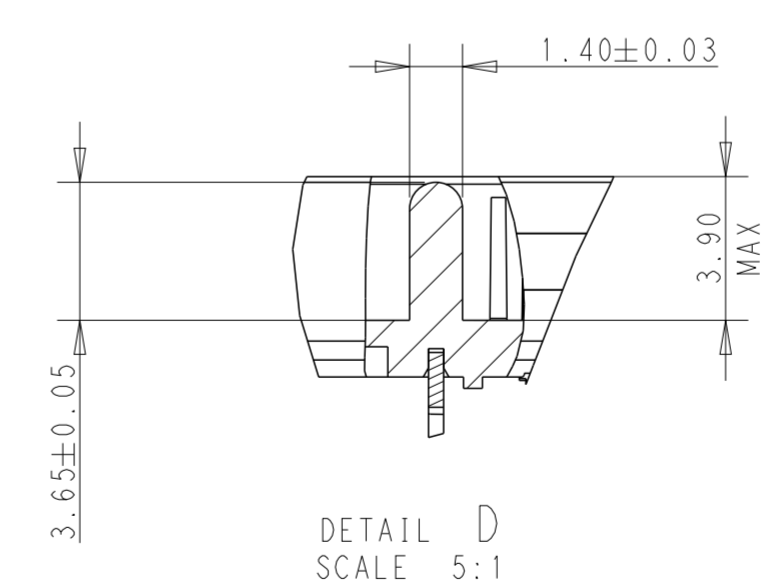


C



B

- MATERIALS:
 HOUSING: HIGH TEMPERATURE NYLON, UL 94-V0;
 LATCHES: HIGH TEMPERATURE NYLON, UL 94-V0;
 CONTACTS: COPPER ALLOY;
 HOLD DOWN: STAINLESS STEEL.
- INTERFACE FINISH:
 (1) 0.00076 (30u") MIN THICK GOLD OVER 0.00127 (50u") MIN THICK NICKEL.
 (2) 0.00038 (15u") MIN THICK GOLD OVER 0.00127 (50u") MIN THICK NICKEL.
- SOLDERTAIL FINISH:
 0.00300 (120u") MIN. THICK MATTE TIN OVER 0.00225 (90u") MIN THICK NICKEL.
- HOLD DOWN FINISH:
 TAB: 0.00300 (120u") MIN MATTE TIN OVER 0.00225 (90u") MIN THICK NICKEL.
- KEEP OUT AREA RESERVED FOR SOCKET LATCHES AT BOTH ENDS.
- MYLAR WITH SIZE L X 6 IS LOCATED IN THE CENTER OF CONNECTOR.

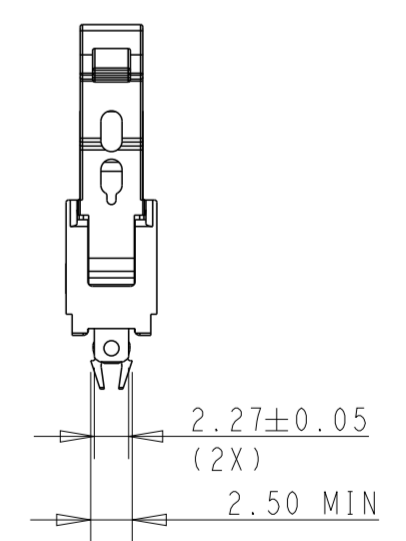
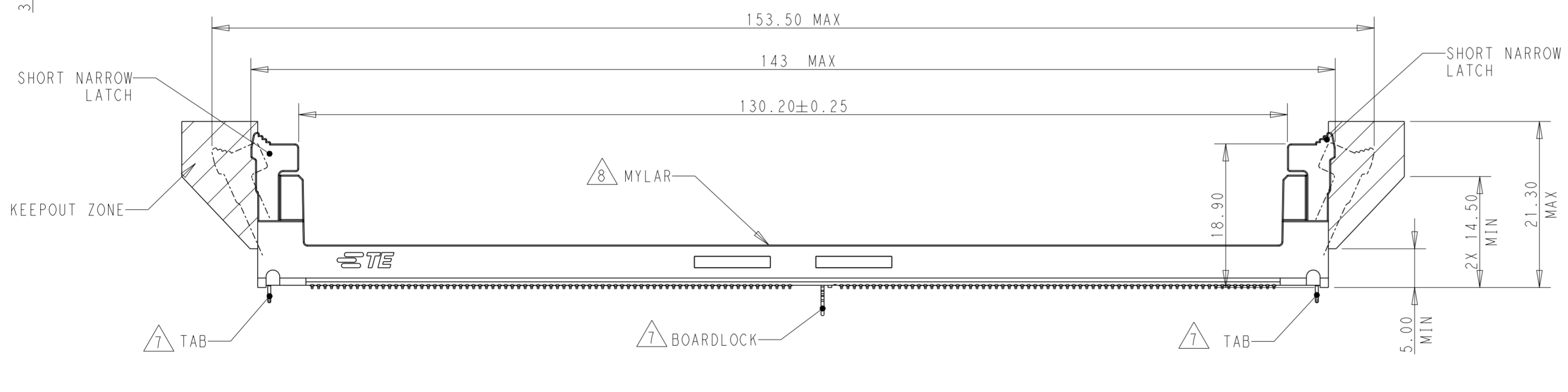
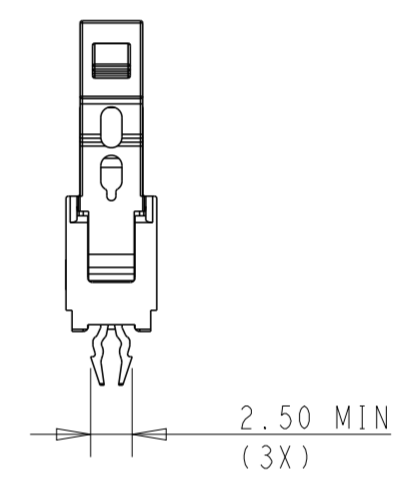
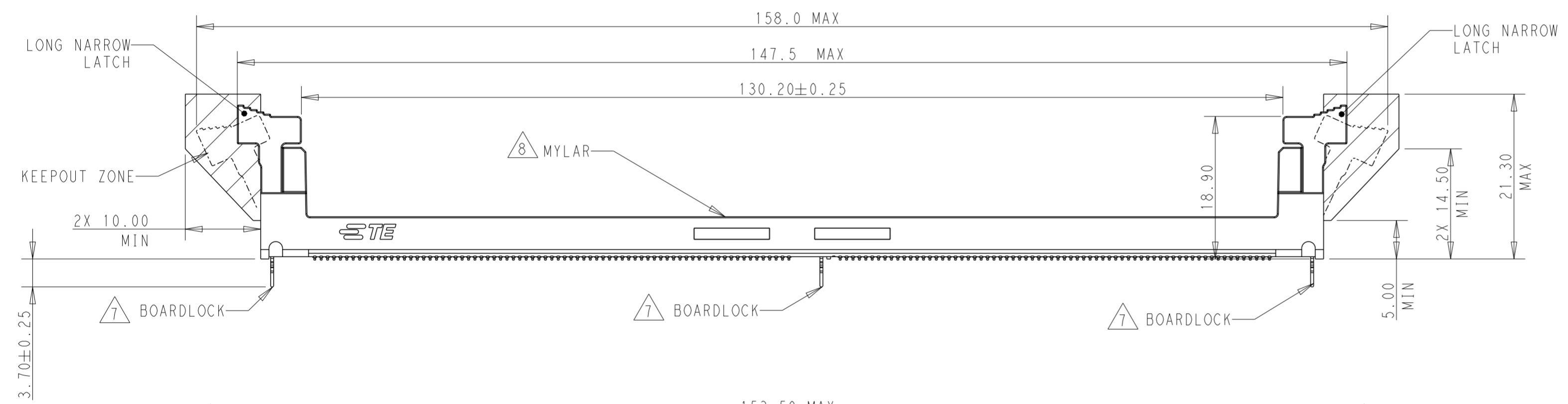
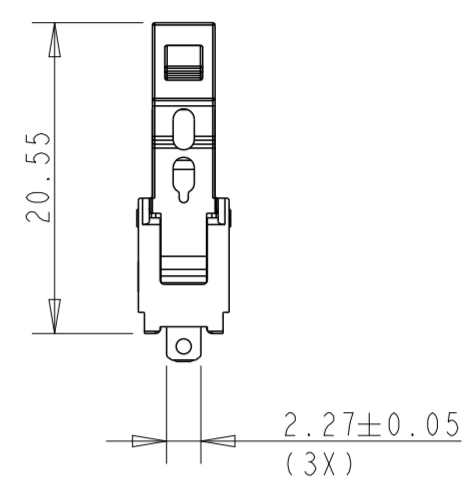
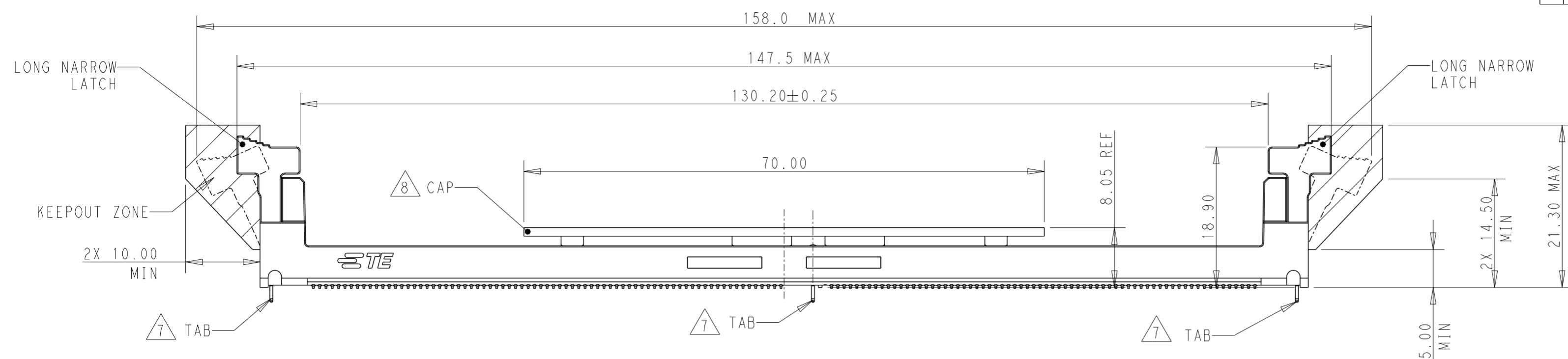


A

THIS DRAWING IS A CONTROLLED DOCUMENT.		DWN 22APR2019 DAVID ZHAO	TE Connectivity	
DIMENSIONS: mm		CHK -		
TOLERANCES UNLESS OTHERWISE SPECIFIED:		PRODUCT SPEC		NAME SOCKET ASSEMBLY DDR5 DIMM, SMT NARROW TYPE 0.85MM PITCH, 288 POSITON
0 PLC ± 1 PLC ±0.25 2 PLC ±0.15 3 PLC ±0.10 4 PLC ± ANGLES ±2° FINISH		APPLICATION SPEC 108-115141 114-115044		
MATERIAL		WEIGHT	SIZE A2	CAGE CODE 00779
			DRAWING NO. C-2317336	RESTRICTED TO
		CUSTOMER DRAWING	SCALE 2:1	SHEET 1 OF 6 REV A1

THIS DRAWING IS UNPUBLISHED. RELEASED FOR PUBLICATION
 © COPYRIGHT 20 BY TE Connectivity ALL RIGHTS RESERVED.

REVISIONS				
P	LTR	DESCRIPTION	DATE	APVD



△ BOARDLOCK AND TAB ARE OPTIONAL FOR DIFFERENT APPLICATION.
 △ MYLAR AND CAP ARE OPTIONAL FOR DIFFERENT APPLICATION.

THIS DRAWING IS A CONTROLLED DOCUMENT.		DWN DAVID ZHAO 22APR2019	TE Connectivity	
DIMENSIONS: mm		CHK -		
TOLERANCES UNLESS OTHERWISE SPECIFIED:		APVD -	NAME SOCKET ASSEMBLY	
0 PLC ±0.25		PRODUCT SPEC 108-115141	DDR5 DIMM, SMT NARROW TYPE	
1 PLC ±0.15		APPLICATION SPEC 114-115044	0.85MM PITCH, 288 POSITON	
2 PLC ±0.10		WEIGHT -	SIZE A2	CAGE CODE 00779
3 PLC ±0.10		CUSTOMER DRAWING	DRAWING NO C-2317336	RESTRICTED TO -
4 PLC ANGLES ±2°		SCALE 1:1	SHEET 2 OF 6	REV A1
FINISH -				

THIS DRAWING IS UNPUBLISHED. RELEASED FOR PUBLICATION
 © COPYRIGHT 20 BY TE Connectivity ALL RIGHTS RESERVED.

REVISIONS				
P	LTR	DESCRIPTION	DATE	APVD

DDR5 DIMM NAMING RULE_NARROW TYPE

DDR5 DIMM SPEC CHARACTERISTICS (MORE SPEC,CHECK TE 108-115141)

X - XXXXXXXX - X

HOUSING&LATCH COLOR

VOID: BLACK&BLACK

1: BLACK&NATURAL

2: BLACK&BLUE

3: BLACK&GREEN

4: NATURAL&BLACK

5: NATURAL&NATURAL

6: BLUE&BLUE

7: BLUE&NATURAL

8: BLUE&BLACK

9: YELLOW&NATURAL

BASE NUMBER FOR NARROW TYPE

2317336: LONG LATCH WITH MYLAR

2379513: LONG LATCH WITH CAP

2379514: LONG LATCH W/O CAP&MYLAR

2416055: SHORT LATCH WITH MYLAR

2428508: SHORT LATCH W/O CAP&MYLAR

GOLD PLATING&HOLDDOWN TYPE

1: 30u"&3 TAB

2: 30u"&3 BOARDLOCK

3: 30u"&2 SIDETAB+1 BOARDLOCK

4: 15u"&3 TAB

5: 15u"& 3 BOARDLOCK

6: 15u"&2 SIDETAB+1 BOARDLOCK

NOTE: MYLAR LENGTH: L=70.0 ±1.0

1. MECHANICAL CHARACTERISTICS

- 1.1 INSERTION FORCE OF MODULE TO CONNENTOR: 106.8N MAX.
- 1.2 UNMATING FORCE: 19.77N MIN.
- 1.3 DURABILITY: PERFORM 25 CYCLES MATING AND UNMATING.
- 1.4 INSERTION FORCE OF CONNECTOR TO PCB: 35N MAX.

2. ELECTRICAL CHARACTERISTICS


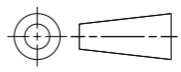
- 1.1 WITHSTANDING VOLTAGE: 500VAC PER EIA-364-20,CONDITION 1.
- 1.2 INSULATION RESISTANCE: 1M OHMS MIN PER EIA-364-21,500VDC.
- 1.3 CURRENT CARRYING CAPABILITY AT 30°C TEMPERATURE: 1A MAX.
- 1.4 CONTACT RESISTANCE(LLCR):
INITIAL: 20 MILLIOHMS MAX,
FINAL: THE CHANGE IN LLCR BETWEEN THE READING AFTER STRESS AND THE INITIAL READING SHALL NOT EXCEED 20 MILLIOHMS.

3. ENVIRONMENTAL CHARACTERISTICS

- 1.1 TEMPERATURE LIFE: 105°C,120H PER EIA-364-17,METHOD A.
- 1.2 MECHANICAL SHOCK: 50G,11MILLISECONDS,3 DROPS IN EACH OF 6 DIRECTIONS PER EIA-364-27.
- 1.3 VIBRATION: 10 MINUTES PER DIRECTION FOR ALL 3 DIRECTIONS PER EIA-364-28, PROFILE SEE TE 108-115141.
- 1.4 THERMAL SHOCK: -55°C TO 85°C,5 CYCLES IN MATED CONDITION PER EIA-364-32,METHOD A,CONDITIOIN I.
- 1.5 CYCLIC TEMPERATUREHUMILITY: 24 CYCLES BETWEEN 25°C AT 80% RH AND 65°C AT 50% RH PER EIA-364-31,METHOD III.
- 1.6 THERMAL CYCLING: 500 CYCLES IN MATED CONDITION BETWEEN 15°C AND 85°C.
- 1.7 MIXED FLOWING GAS:
FOR 15U"AU TYPE, 168H MIN TESTING PER EIA-364-65,CLASS IIA.
FOR 30U"AU TYPE, 240H MIN TESTING PER EIA-364-65,CLASS IIA.

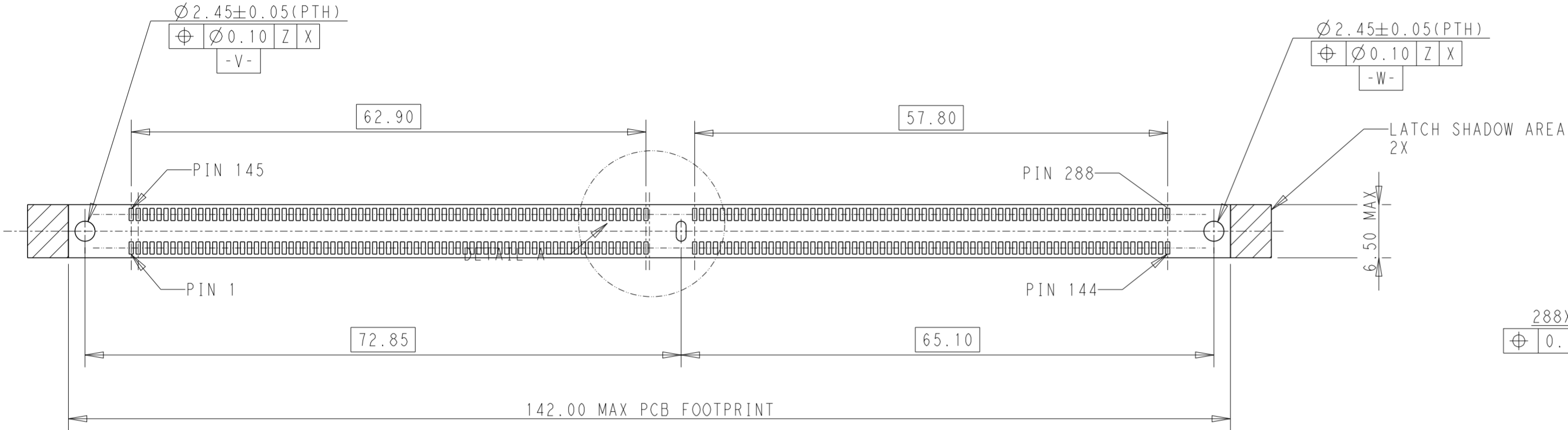
4. REFLOW PROCESS CHARACTERISTICS

MOISTURE SENSITIVITY LEVEL OF PLASTIC MATERIALL IS LEVEL 1, COULD WITHSTAND 260°C,10S LEAD FREE PROCESS ABILITY. RECOMMENDED REFLOW PROFILE IS IN TE 108-115141.

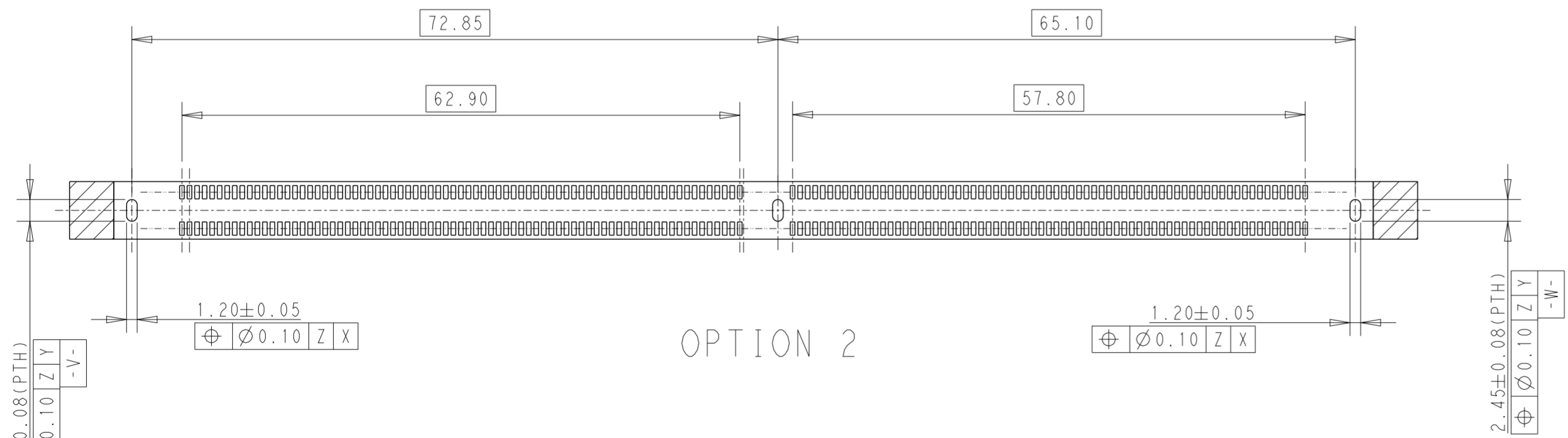
THIS DRAWING IS A CONTROLLED DOCUMENT.		DWN DAVID ZHAO 22APR2019	 TE Connectivity	
DIMENSIONS: mm		CHK -		
		TOLERANCES UNLESS OTHERWISE SPECIFIED:		NAME SOCKET ASSEMBLY DDR5 DIMM, SMT NARROW TYPE 0.85MM PITCH, 288 POSITIOIN
MATERIAL -		0 PLC ± 1 PLC ±0.25 2 PLC ±0.15 3 PLC ±0.10 4 PLC ± ANGLES ±2° FINISH	PRODUCT SPEC 108-115141 APPLICATION SPEC 114-115044	SIZE A2
			WEIGHT -	CAGE CODE 00779
			CUSTOMER DRAWING	DRAWING NO C-2317336
			SCALE 1:1	RESTRICTED TO -
			SHEET 3 OF 6	REV A1

REVISIONS				
P	LTR	DESCRIPTION	DATE	APVD

1 DATUM Z IS THE TOP SIZE OF PCB.
 2 HOLD DOWN HOLE SHOULD BE PLATED THROUGH HOLE.

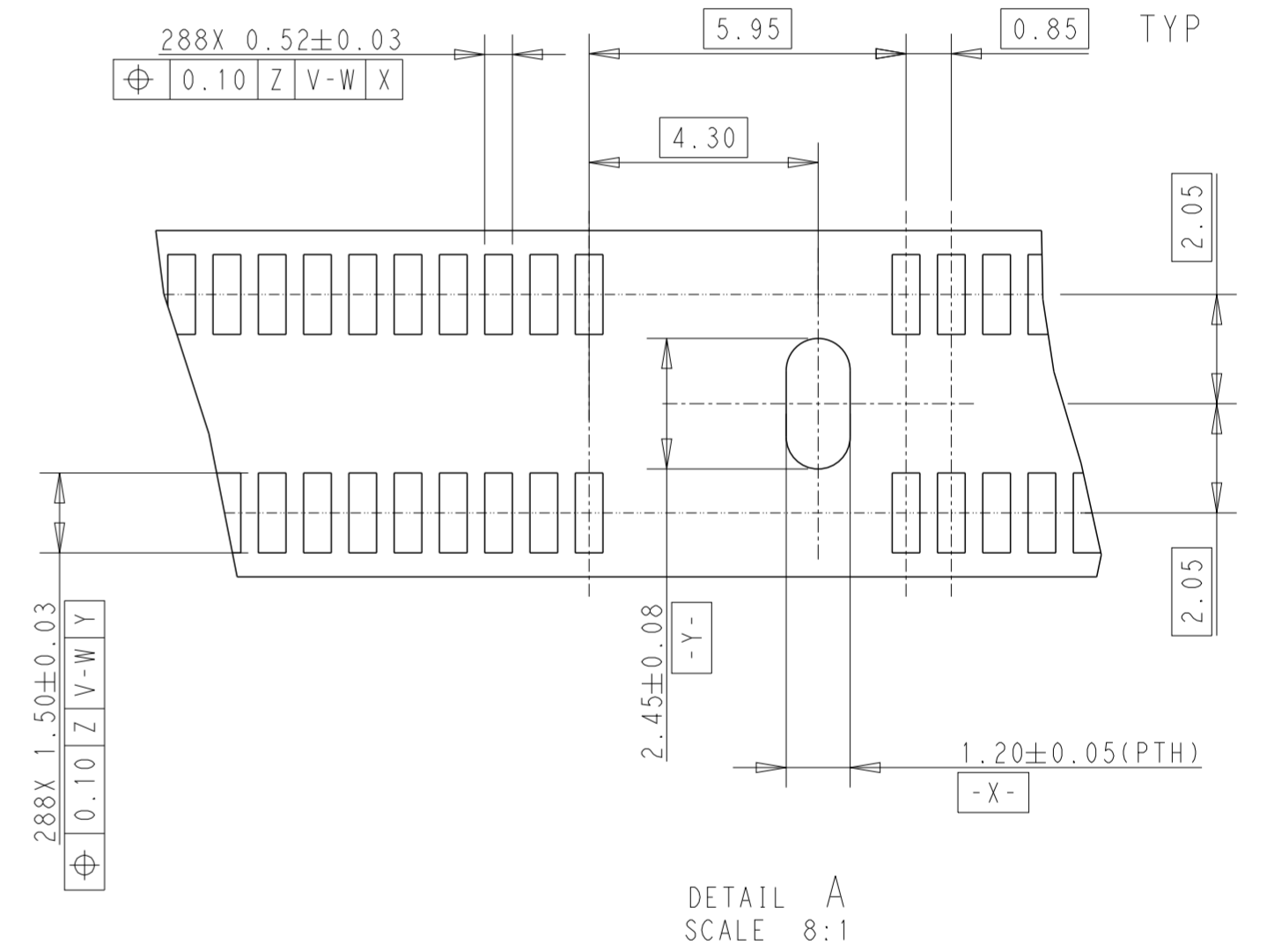


OPTION 1



OPTION 2

RECOMMENDED PCB LAYOUT
 VIEWED FROM CONNECTOR SIDE

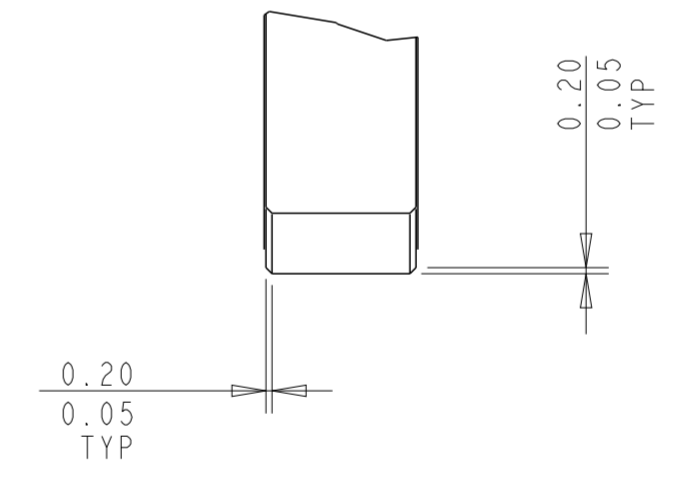
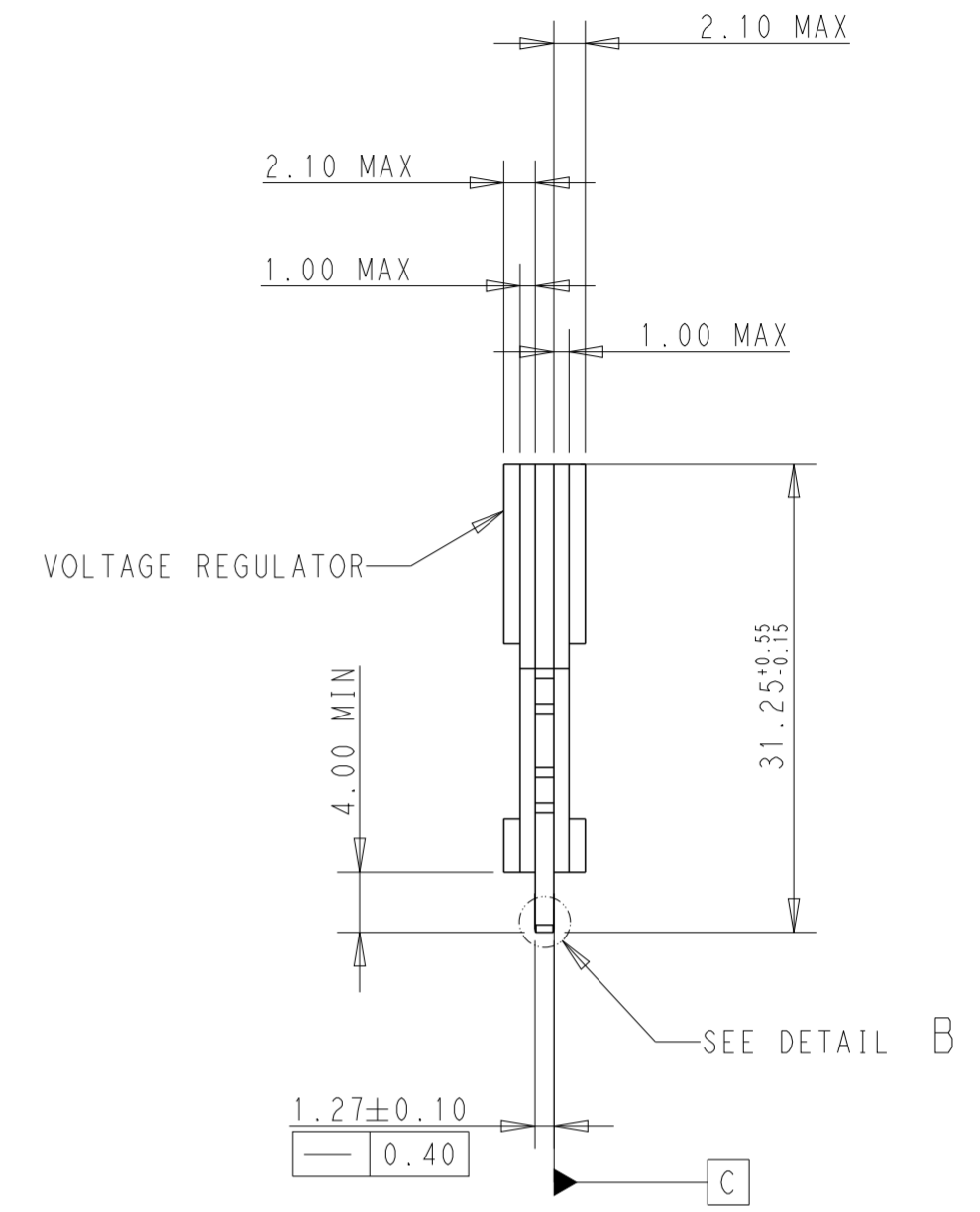
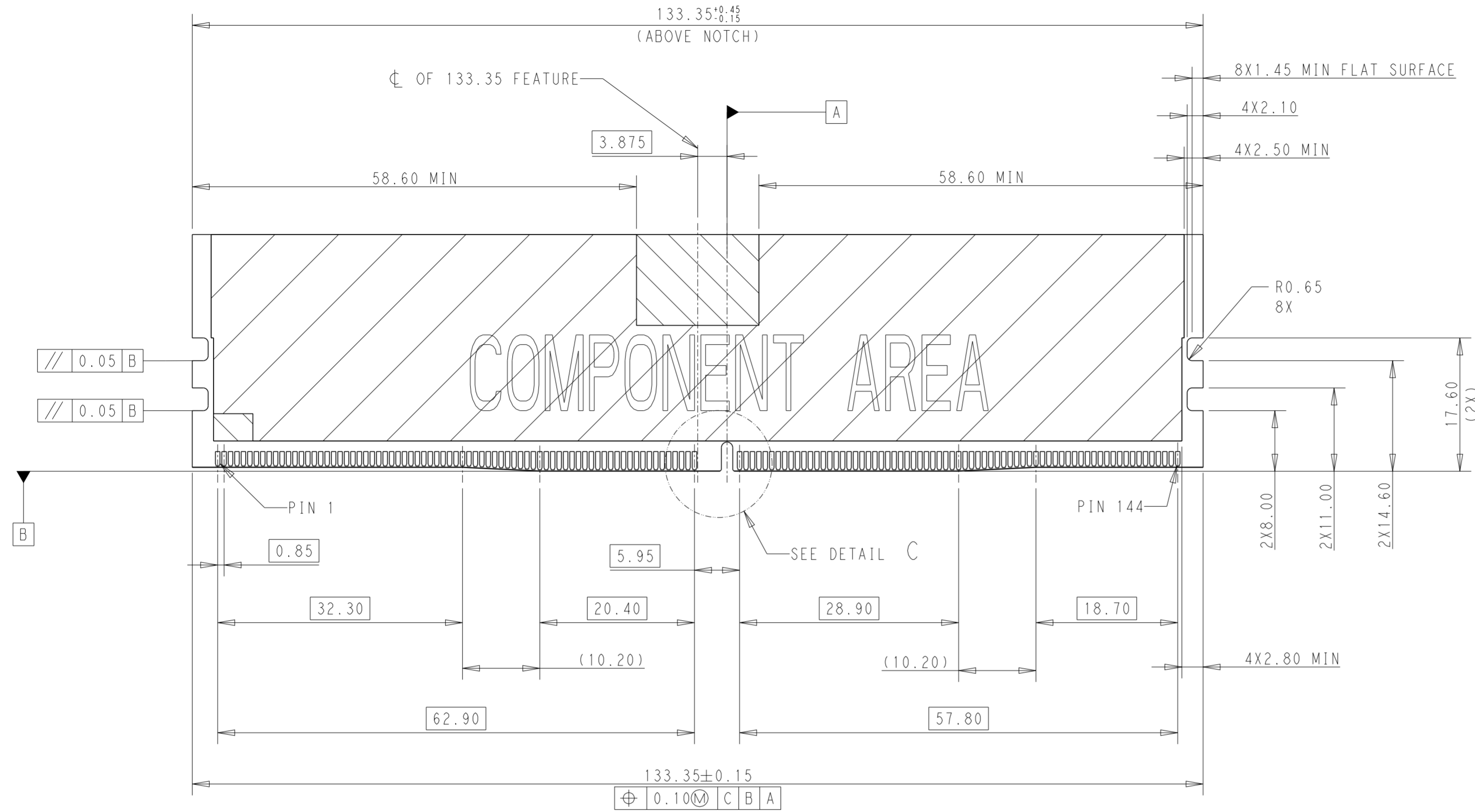


DETAIL A
 SCALE 8:1

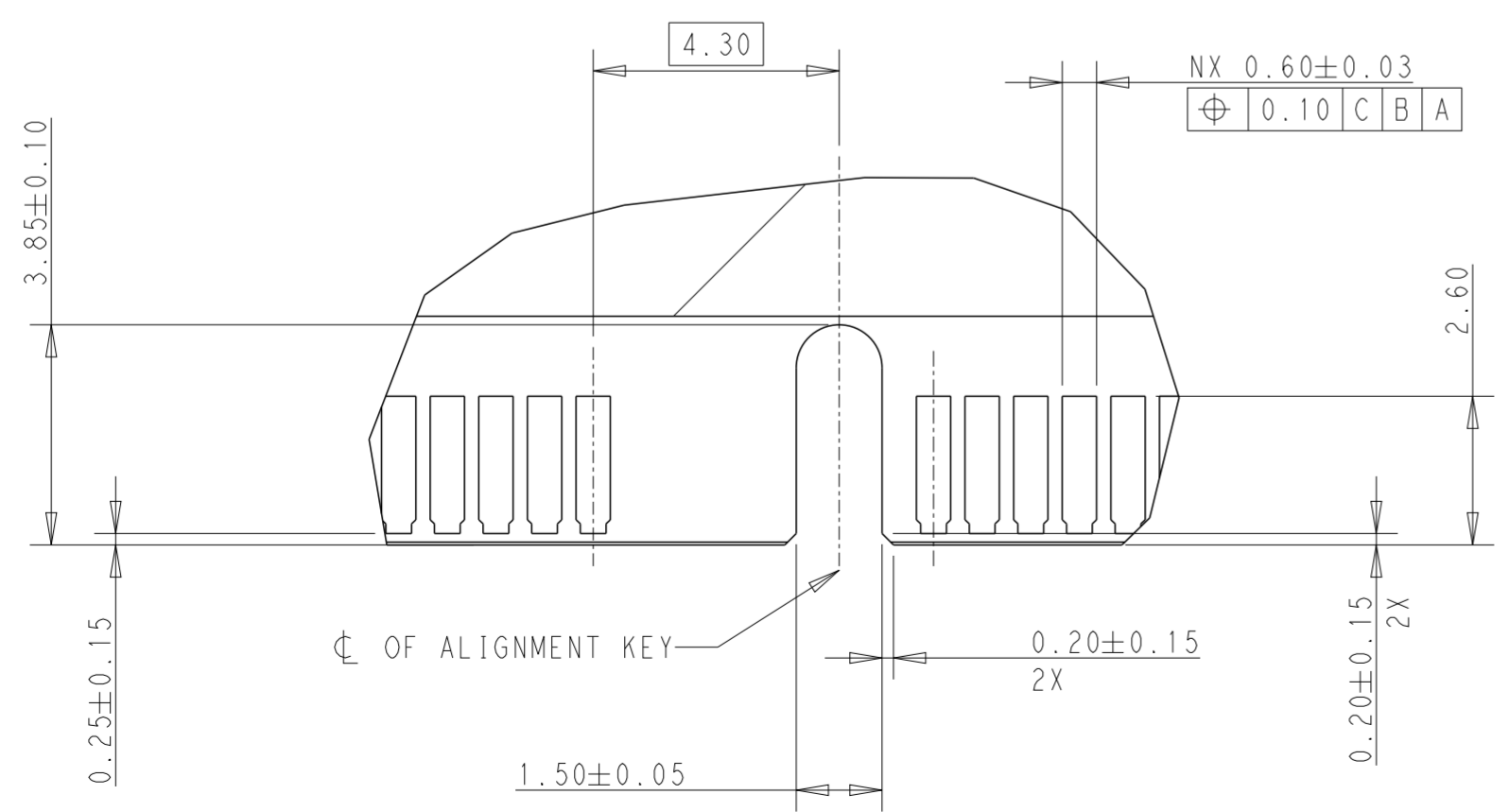
THIS DRAWING IS A CONTROLLED DOCUMENT.		DWN 22APR2019 DAVID ZHAO	TE Connectivity	
DIMENSIONS: mm		CHK -		
TOLERANCES UNLESS OTHERWISE SPECIFIED:		PRODUCT SPEC 108-115141		NAME SOCKET ASSEMBLY
0 PLC ±		APPLICATION SPEC 114-115044		DDR5 DIMM, SMT NARROW TYPE
1 PLC ±0.25		WEIGHT -		0.85MM PITCH, 288 POSITIOIN
2 PLC ±0.15		CUSTOMER DRAWING		SIZE A2
3 PLC ±0.10		SCALE 1:1		CAGE CODE 00779
4 PLC ±		SHEET 4 OF 6		DRAWING NO C-2317336
ANGLES ±2°		REV A1		RESTRICTED TO -
FINISH -		SHEET 4 OF 6		REV A1

THIS DRAWING IS UNPUBLISHED. RELEASED FOR PUBLICATION
 © COPYRIGHT 20 BY TE Connectivity ALL RIGHTS RESERVED.

REVISIONS				
P	LTR	DESCRIPTION	DATE	APVD



DETAIL B
 SCALE 16:1

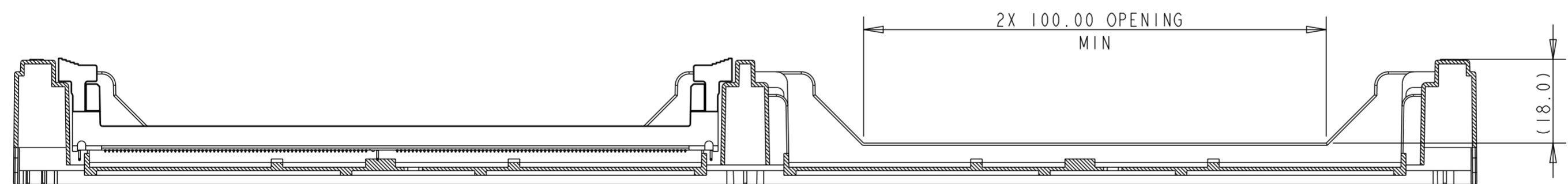
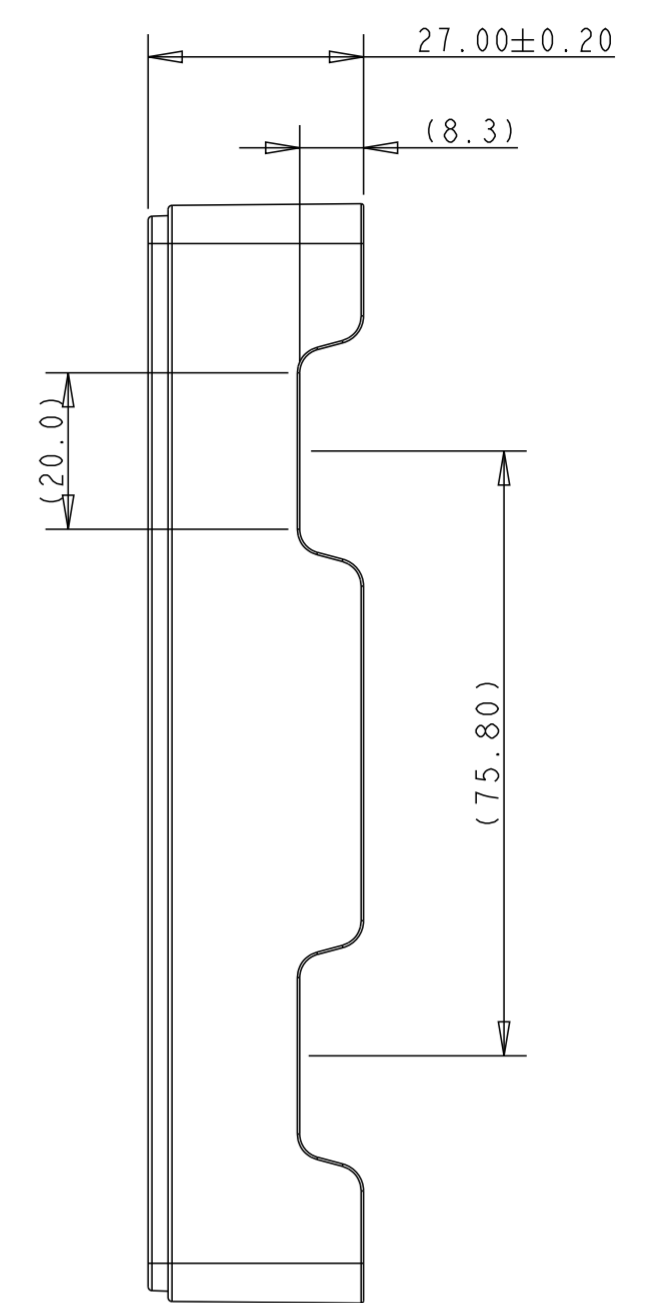
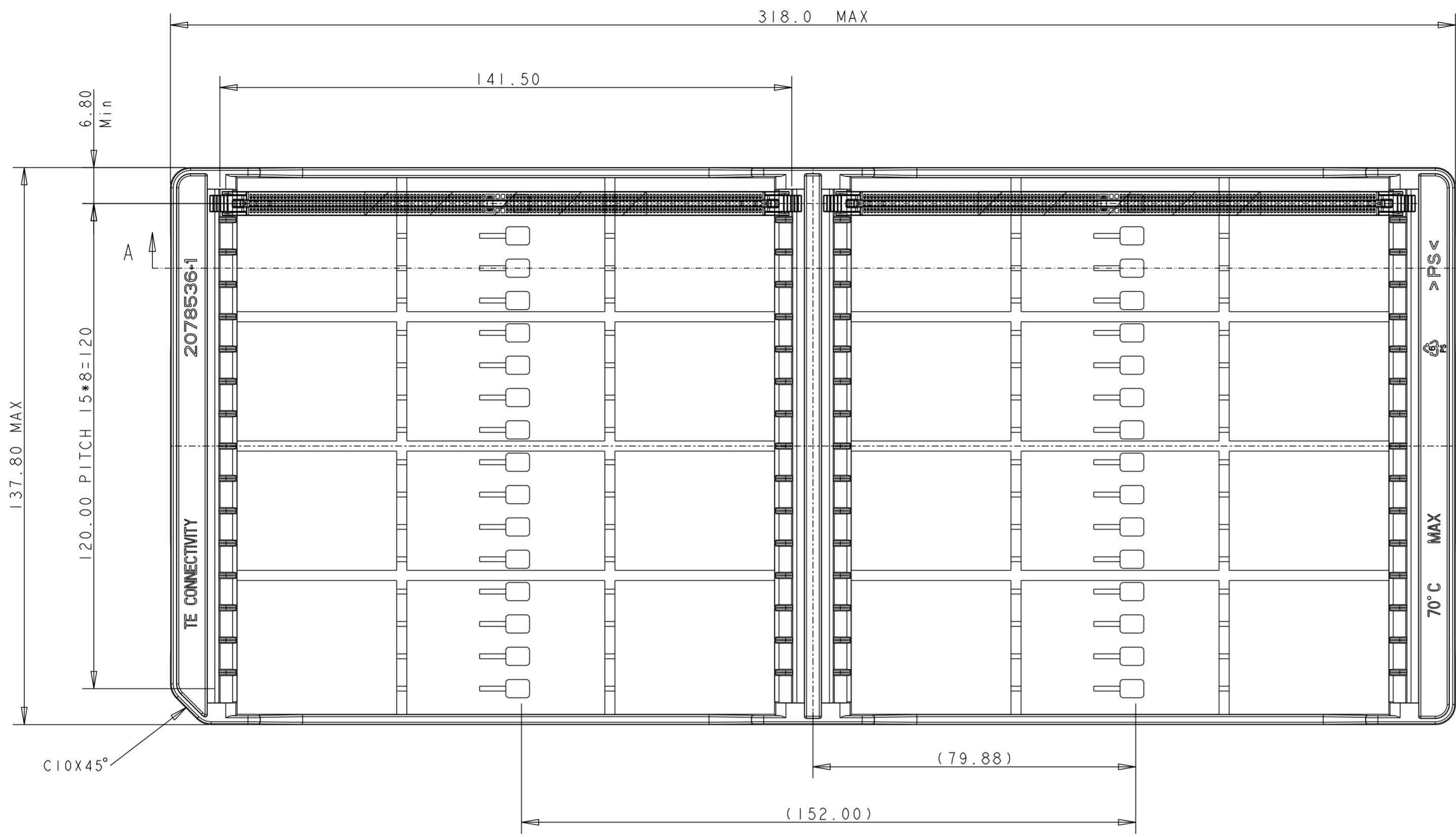


DETAIL C
 SCALE 8:1

THIS DRAWING IS A CONTROLLED DOCUMENT.		DWN DAVID ZHAO 22APR2019	TE Connectivity	
DIMENSIONS: mm		CHK -		
TOLERANCES UNLESS OTHERWISE SPECIFIED:		PRODUCT SPEC 108-115141		NAME SOCKET ASSEMBLY
0 PLC ±		APPLICATION SPEC 114-115044		DDR5 DIMM, SMT NARROW TYPE
1 PLC ±0.25		WEIGHT -		0.85MM PITCH, 288 POSITON
2 PLC ±0.15		CUSTOMER DRAWING		SIZE A2
3 PLC ±0.10		SCALE 1:1		CAGE CODE 00779
4 PLC ±		SHEET 5 OF 6		DRAWING NO C-2317336
ANGLES ±2°		REV A1		RESTRICTED TO -
FINISH -				

20 BY TE Connectivity

REVISIONS				
P	LTR	DESCRIPTION	DATE	APVD



SECTION A-A

NOTES:

- MATERIALS :
TRAY: HIPS, COLOR: BLACK
BOX: CORRUGATED FIBERBOARD
- DIMENSIONS:
BOX: L=410;W=383;H=340
- QUANTITY:
32 PCS/TRAY
640 PCS/BOX
- WEIGHT:
GROSS WEIGHT: 7.5KG

THIS DRAWING IS A CONTROLLED DOCUMENT.		DWN DAVID ZHAO 22APR2019	TE Connectivity	
DIMENSIONS: mm		CHK -		
TOLERANCES UNLESS OTHERWISE SPECIFIED: 0 PLC ± 1 PLC ±0.25 2 PLC ±0.15 3 PLC ±0.10 4 PLC ± ANGLES ±2° FINISH		PRODUCT SPEC 108-115141	NAME SOCKET ASSEMBLY DDR5 DIMM, SMT NARROW TYPE 0.85MM PITCH, 288 POSITON	
MATERIAL -		APPLICATION SPEC 114-115044	SIZE A2	CAGE CODE 00779
		WEIGHT -	DRAWING NO C-2317336	RESTRICTED TO -
		CUSTOMER DRAWING	SCALE 1:1	SHEET 6 OF 6
				REV A1