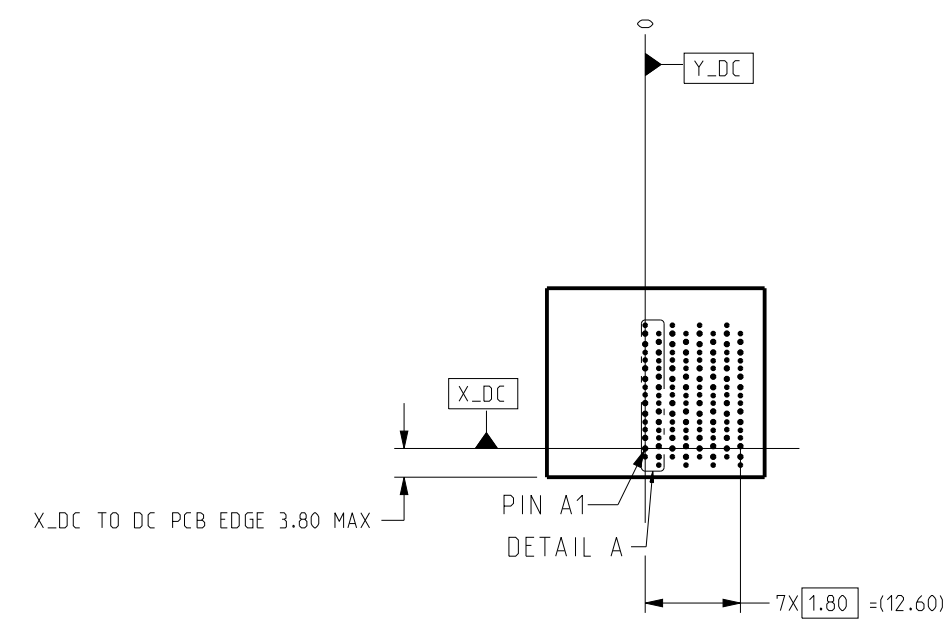
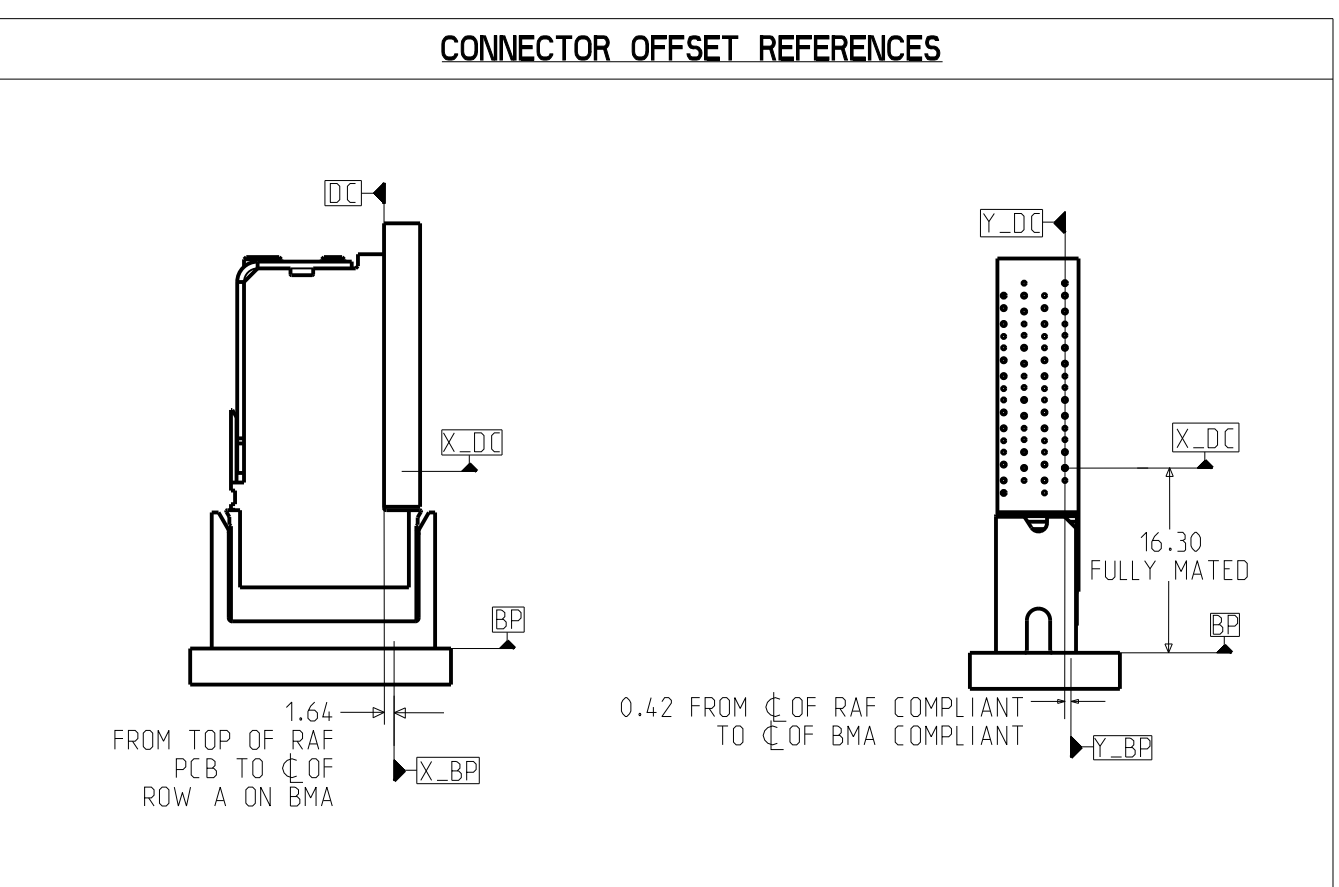
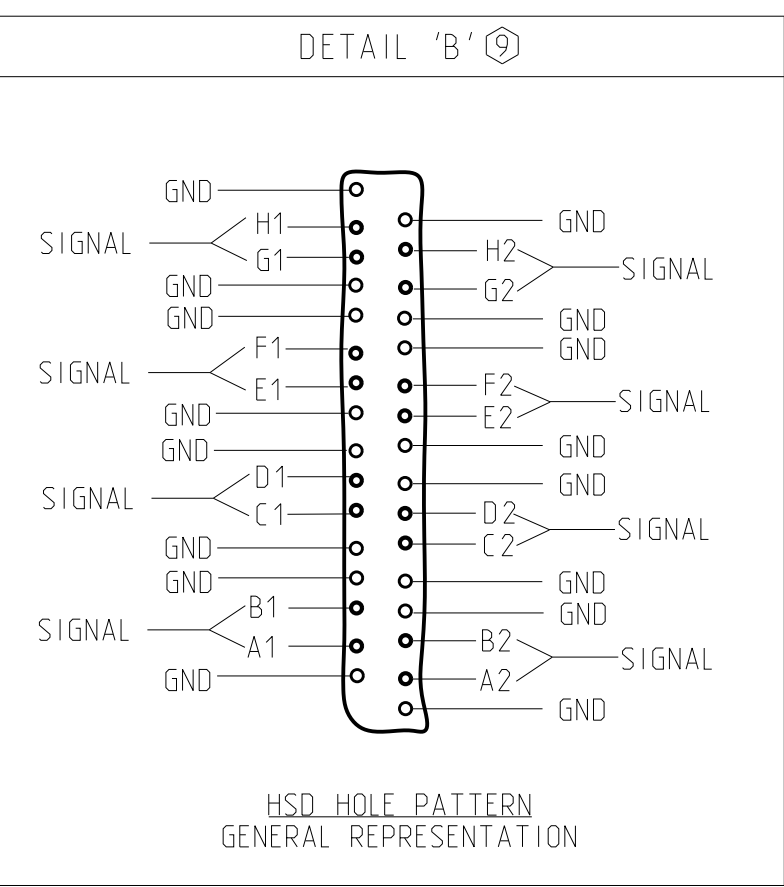
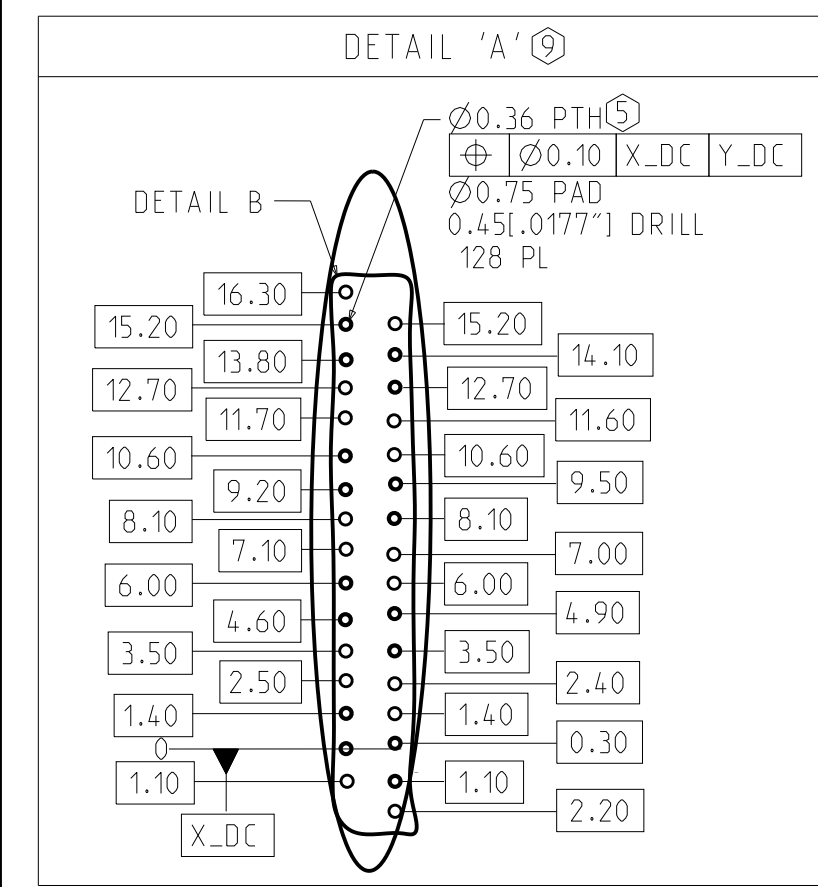
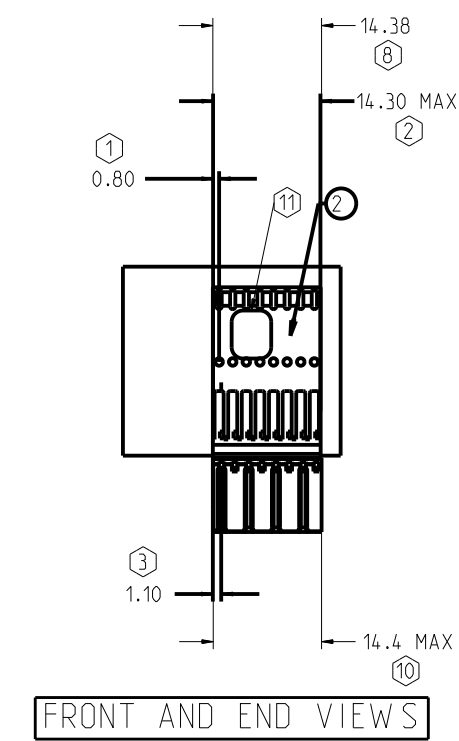


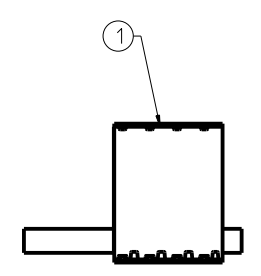
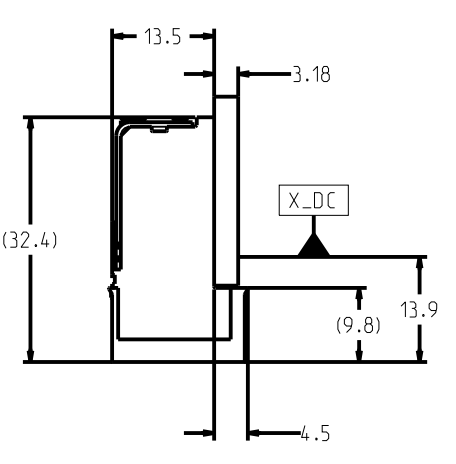
REV	ECN	DESCRIPTION	BY	DATE	APPROVED
A	JLIU-22111608	RELEASE TO PRODUCTION	J.LIU	11/23/2022	J.LIU



FRONT VIEW - DC HOLE PATTERN ONLY, CONNECTOR SIDE REFERENCED FROM LEFT MOST SIGNAL COLUMN, ALL DIMENSIONS BASIC



FRONT AND END VIEWS



BOTTOM VIEW
MODULE LOCATIONS FROM LEFT END OF PLASTIC

- NOTES:
- DISTANCE FROM FIRST STIFFENER PILOT HOLE TO LEFT END OF STIFFENER.
 - TOTAL LENGTH OF STIFFENER.
 - DISTANCE FROM CENTERLINE OF 1ST COLUMN OF SIGNAL PLATED THRU HOLES TO LEFT EDGE OF CONNECTOR.
 - MOUNTING SCREWS AND JOINER MODULES (IF PRESENT) TO BE BAGGED WITH EACH CONNECTOR ASSEMBLY.
 - STATED PAD SIZE MAY REQUIRE FILLETING. SEE TB-2237 FOR ROUTING, HOLE WALL PLATING THICKNESS AND FINISHED HOLE SIZE.
 - NA.
 - REFER TO TB-2307 FOR XCede HD PLUS PRODUCT SPECIFICATIONS.
 - OVERALL CONNECTOR LENGTH.
 - DETAIL VIEWS ARE NOT TO SCALE. DO NOT SCALE DRAWING.
 - FRONT HOUSING WIDTH. CONNECTORS CAN BE USED IN STACKABLE APPLICATION.
 - CONNECTOR IS LASER MARKED WITH MANUFACTURING INFORMATION.
 - REFER TO DRAWING C-527-4133-000 FOR MARKING REQUIREMENTS AND DETAILS.

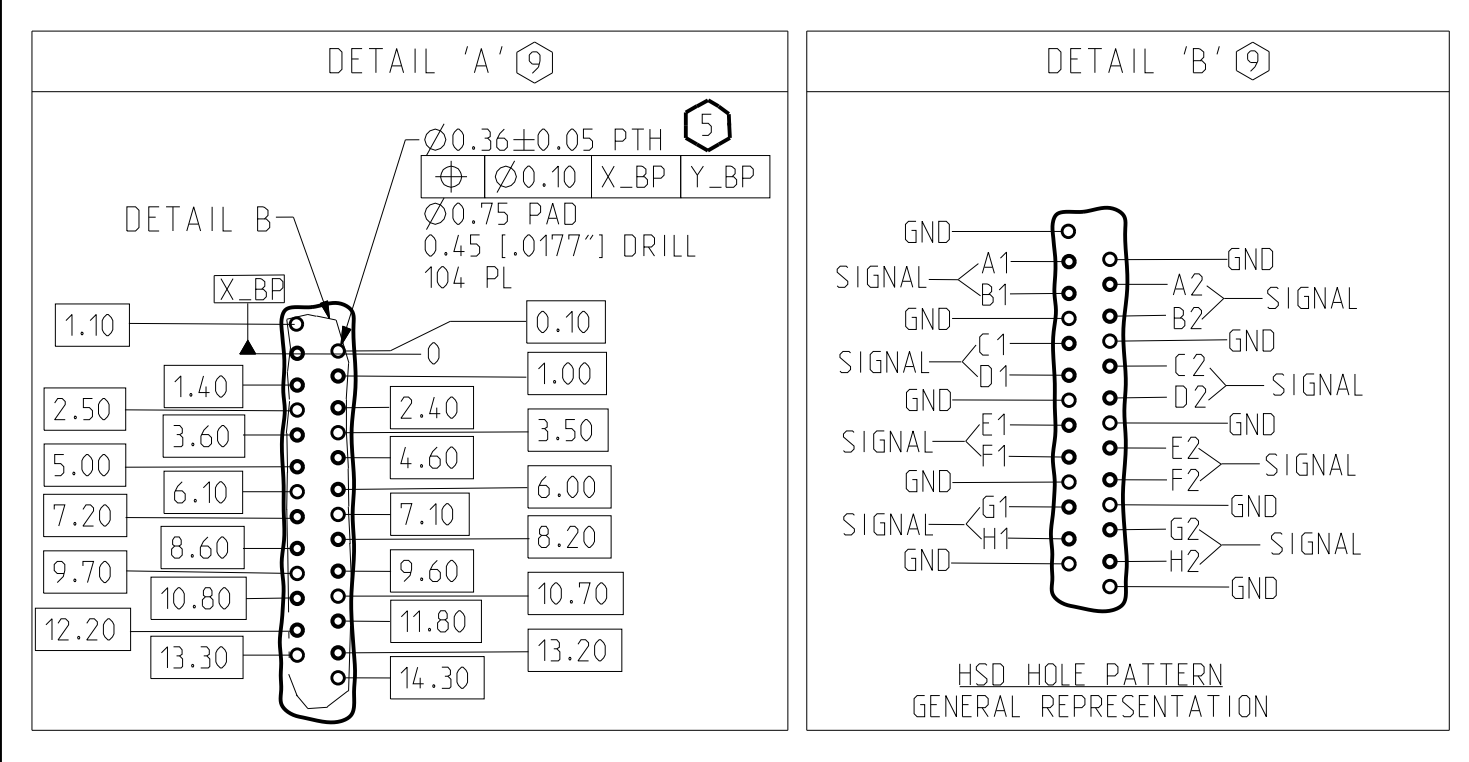
TABLE 1: PARTS LIST

ITEM	PART NUMBER	DESCRIPTION	QTY
1	915-430A-BOH	XCede HD PLUS 4PAIR HSD MOD w/ XG, 8POS, 1000HMS, .0177" DRILL, NANO NI, STD GOLD	1
2	617-1421-014	XCede HD PLUS 4PAIR STIFFENER	1

NOTE: SEE FRONT VIEW FOR STIFFENER LENGTH.

CUSTOMER: DISTRIBUTOR / XHD PLUS WITH EXTRA GROUND 4PAIR X 8, HSD 1000HMS

TOLERANCES	DESIGN 10/13/2022 J.LIU	Amphenol TCS A Division of Amphenol Corporation 200 Innovative Way, Nashua, NH 03062 803.879.3000
0.0 ±0.25	DRAWN 10/13/2022 AUTO GENERATED	
0.00 ±0.13	CHK 10/13/2022 J.LIU	
0.000 ± -	APVD 11/23/2022 J.LIU	
ANGLES ± 3°		
UNLESS OTHERWISE SPECIFIED DIMENSIONS ARE IN MM AND DECIMAL MARKER IS A PERIOD.		TITLE XCede HD PLUS DAUGHTERCARD ASSEMBLY 4 PAIR CONNECTOR, LEADFREE
INTERPRET PER ANSI Y14.5 CODE IDENT 31413		PART NO. JX419-50139 DRAWING NO. C-JX419-50139 CRED FILES JX419-50139.ASM JX419-50139.DRW
SIZE D	SCALE 1/1	REV A
		SHEET 1 OF 2



FOR REFERENCE ONLY; FOR SPECIFIC DETAILS, SEE C-USE DRAWINGS FOR BACKPLANE MODULES IN TABLE 2
BACKPLANE COMPONENTS MUST BE PURCHASED SEPARATELY AND MAY DIFFER FROM EXAMPLE SHOWN

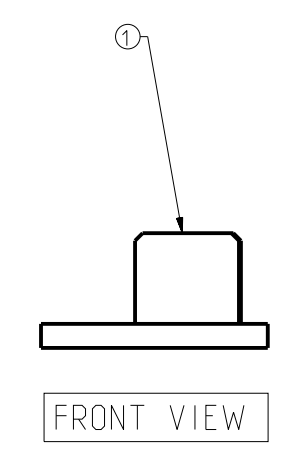
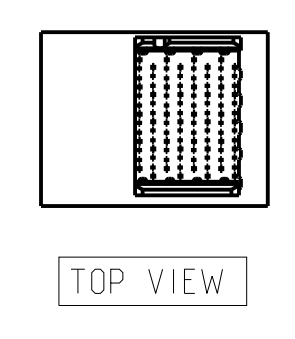
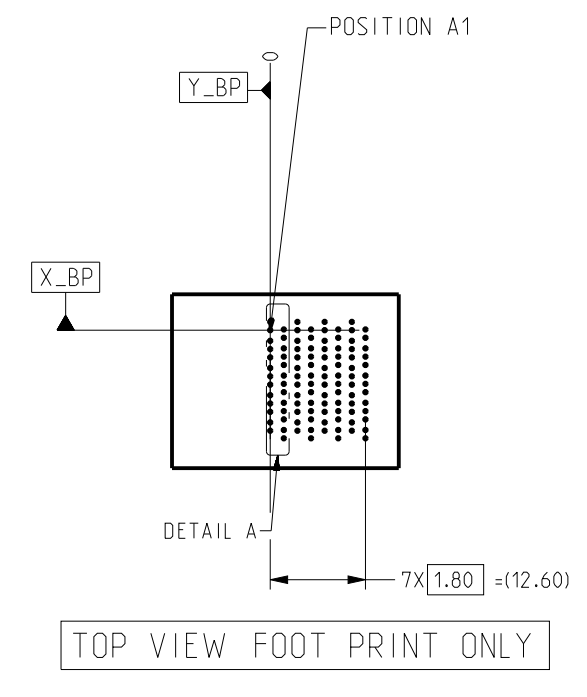


TABLE 2: PARTS LIST			
ITEM	PART NUMBER	DESCRIPTION	QTY
1	926-401E-40H	XCede HD PLUS 4PAIR 8POS. OPEN. 3MM WIPE, .0177" DRILL, NANO NI, STD GOLD	1

CUSTOMER: DISTRIBUTOR / XHD PLUS WITH EXTRA GROUND 4PAIR X 8. HSD 1000HMS

TOLERANCES	DESIGN 10/13/2022	<p>Amphenol TCS A Division of Amphenol Corporation 200 Innovative Way, Nashua, NH 03062 803.879.3000</p> <p>TITLE XCede HD PLUS BACKPLANE ASSEMBLY 4 PAIR CONNECTOR, LEADFREE</p> <p>PART NO. JX419-50139</p> <p>DRAWING NO. C-JX419-50139</p> <p>CRED FILES JX419-50139_BP_ASM JX419-50139_BP.DRW</p>	REV
0.0 ±0.25	DRAWN 10/13/2022		A
0.00 ±0.13	AUTO GENERATED		
0.000 ± -	CHK 10/13/2022		
ANGLES ± 3°	APVD 11/23/2022		

UNLESS OTHERWISE SPECIFIED DIMENSIONS ARE IN MM AND DECIMAL MARKER IS A PERIOD.

INTERPRET PER ANSI Y14.5

CODE IDENT 31413

CUSTOMER USE DRAWING

SIZE D SCALE 1/1 SHEET 2 OF 2