

ZONE	REV	ECN NUMBER	DESCRIPTION	BY	DATE	APPROVED
ALL	A	MHAN-9MZHS.VER01	NEW RELEASE	HCL-NN	08/21/2014	M.HANRAHAN
	B	LCUN-9NZKE5.VER01	ADDED 968-4200-A1K TO TABLE 1	HCL-VR	09/23/2014	L.CURRAN
SHT3 SHT 1 & SHT2	C	JXUU-20102302	ADDED DETAILS OF XCede HD2 POWER ASSEMBLY. DIM 0.026 WAS 0.007	HCL-SH	12/10/2020	J.XU

TABLE 1

PART NUMBER	PLATING
968-4200-A1D	NI SULFAMATE, STANDARD GOLD, LEADFREE
968-4200-A1E	NI SULFAMATE, HIGH GOLD, LEADFREE
968-4200-A1H	NANO NI, STANDARD GOLD, LEADFREE
968-4200-A1J	NANO NI, HIGH GOLD, LEADFREE
968-4200-A1K	NI SULFAMATE, HIGH GOLD, LEADED, 60-40 TIN-LEAD

TABLE 2

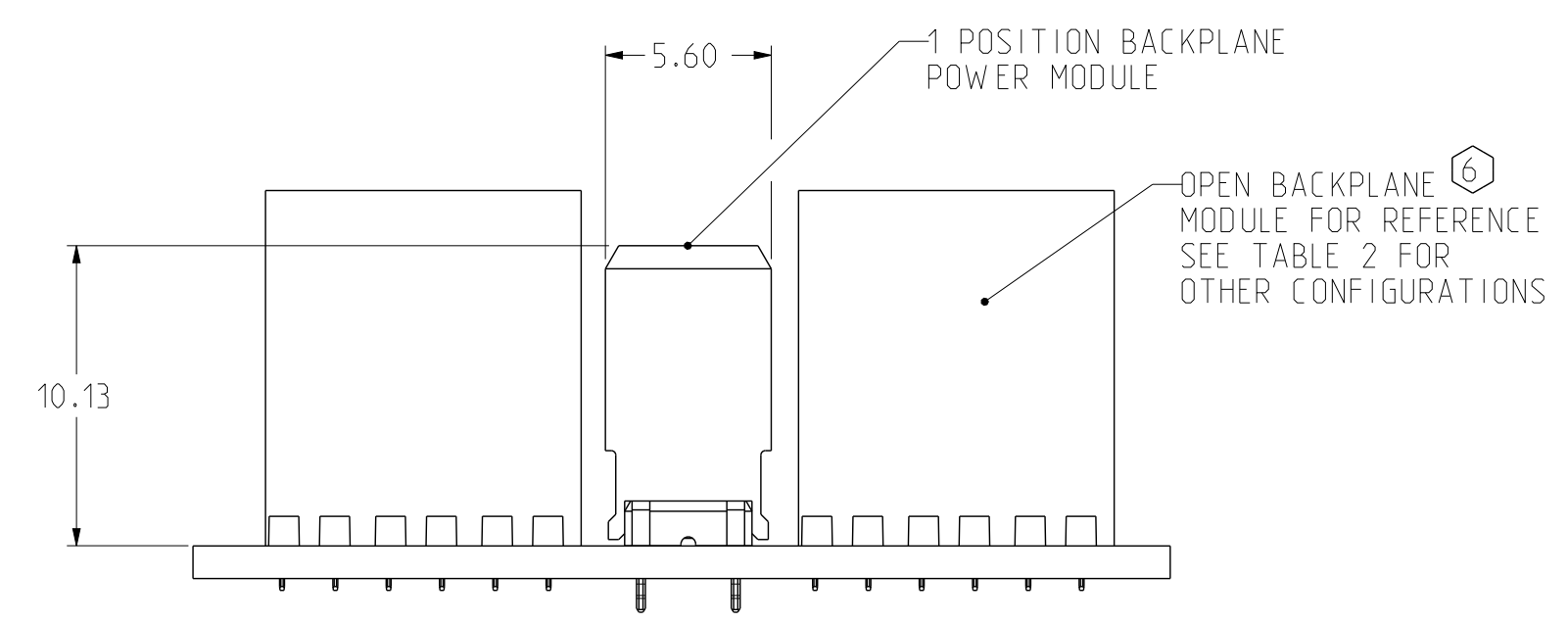
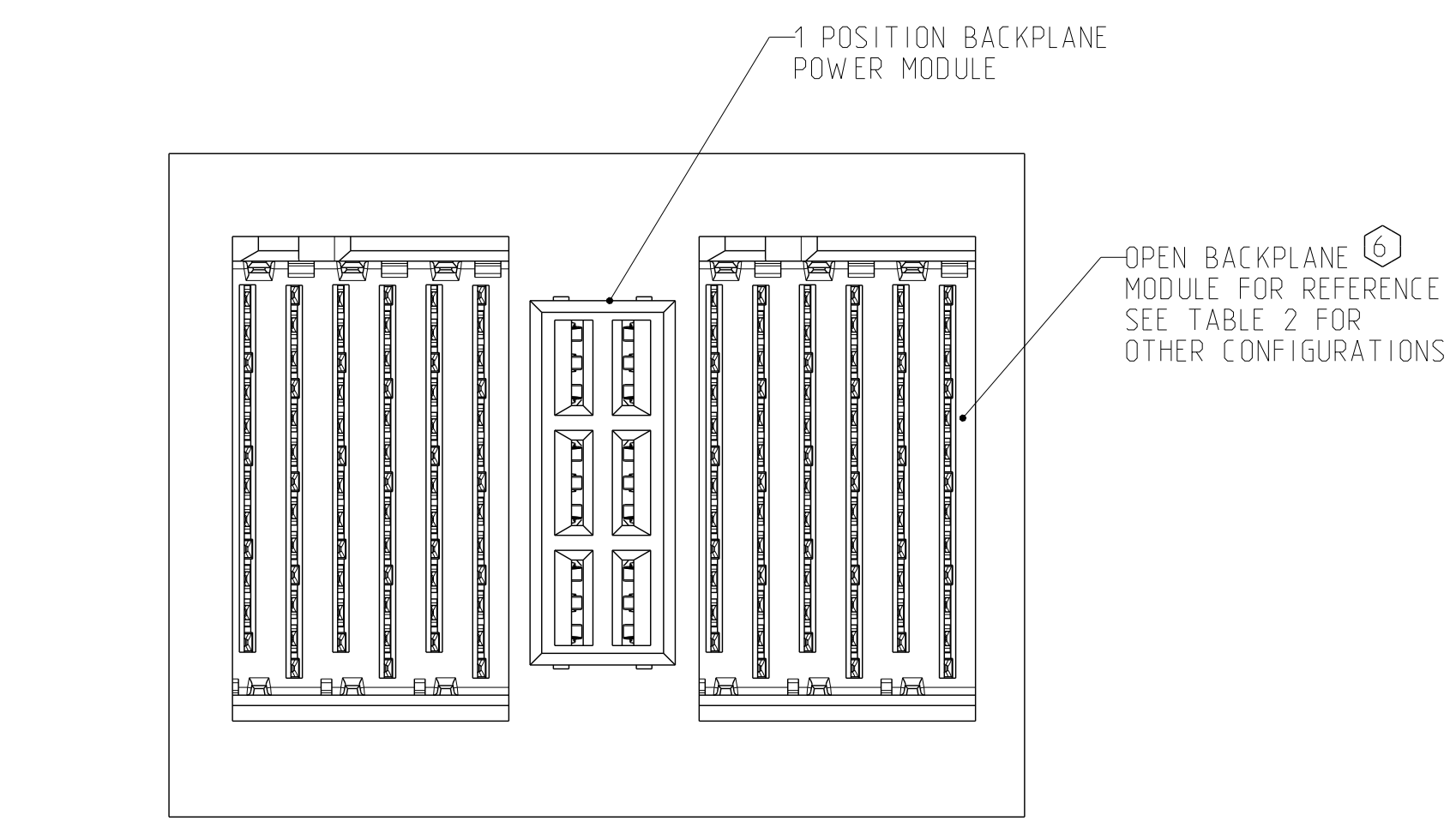
CONFIGURATION	DIM L	DIM R
OPEN	3.12	5.88
LEFT POLARIZED	3.12	13.08
RIGHT POLARIZED	10.32	5.88
LEFT WALL	3.12	7.68
RIGHT WALL	4.92	5.88
TWO WALL	4.92	7.68

D

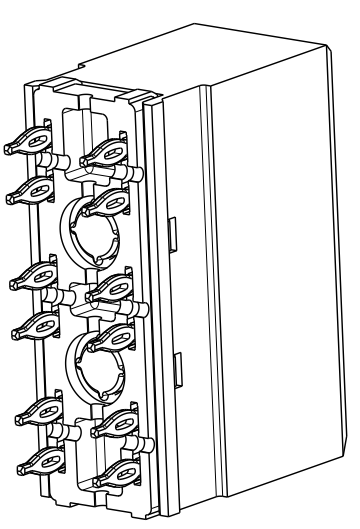
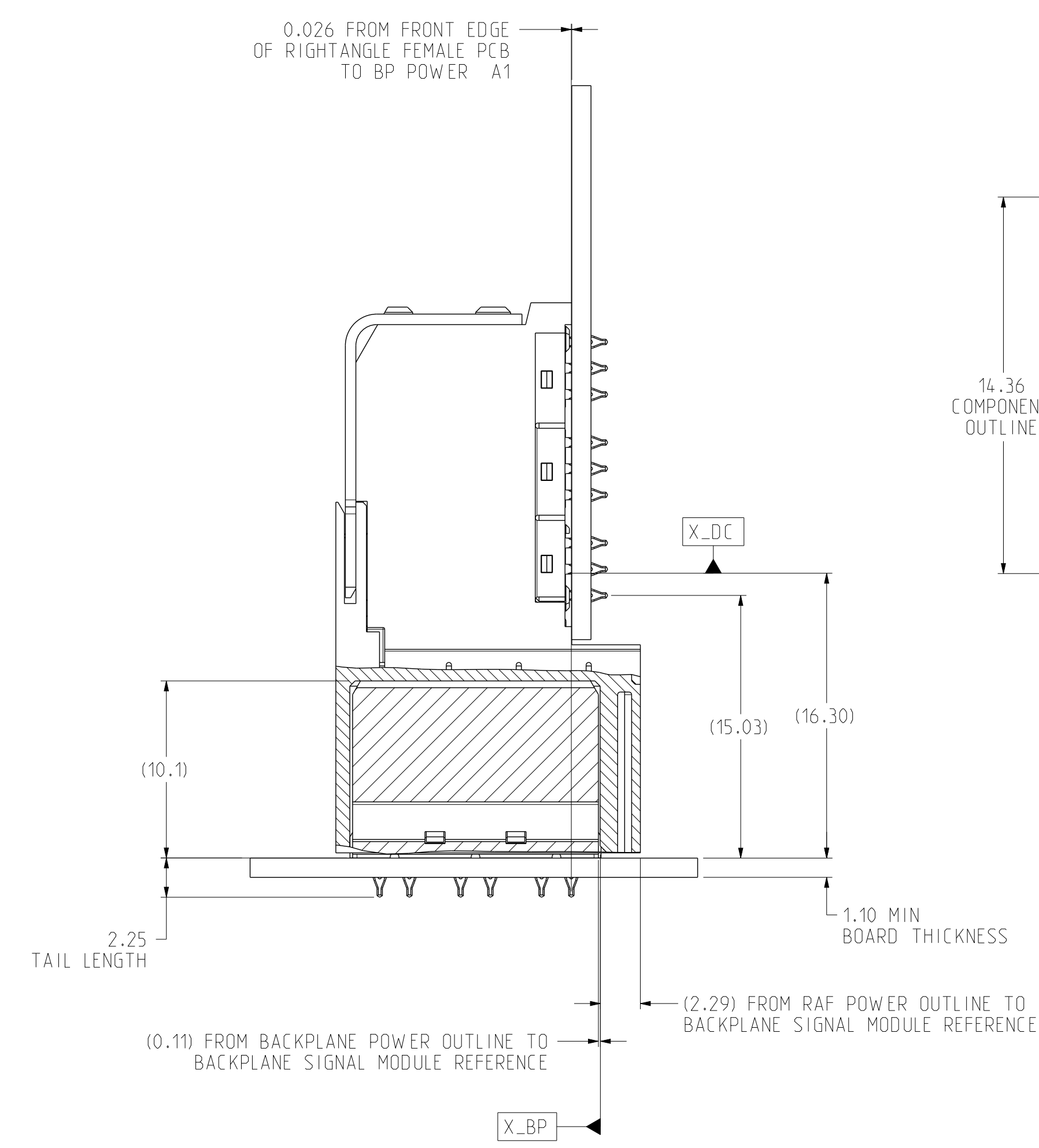
C

B

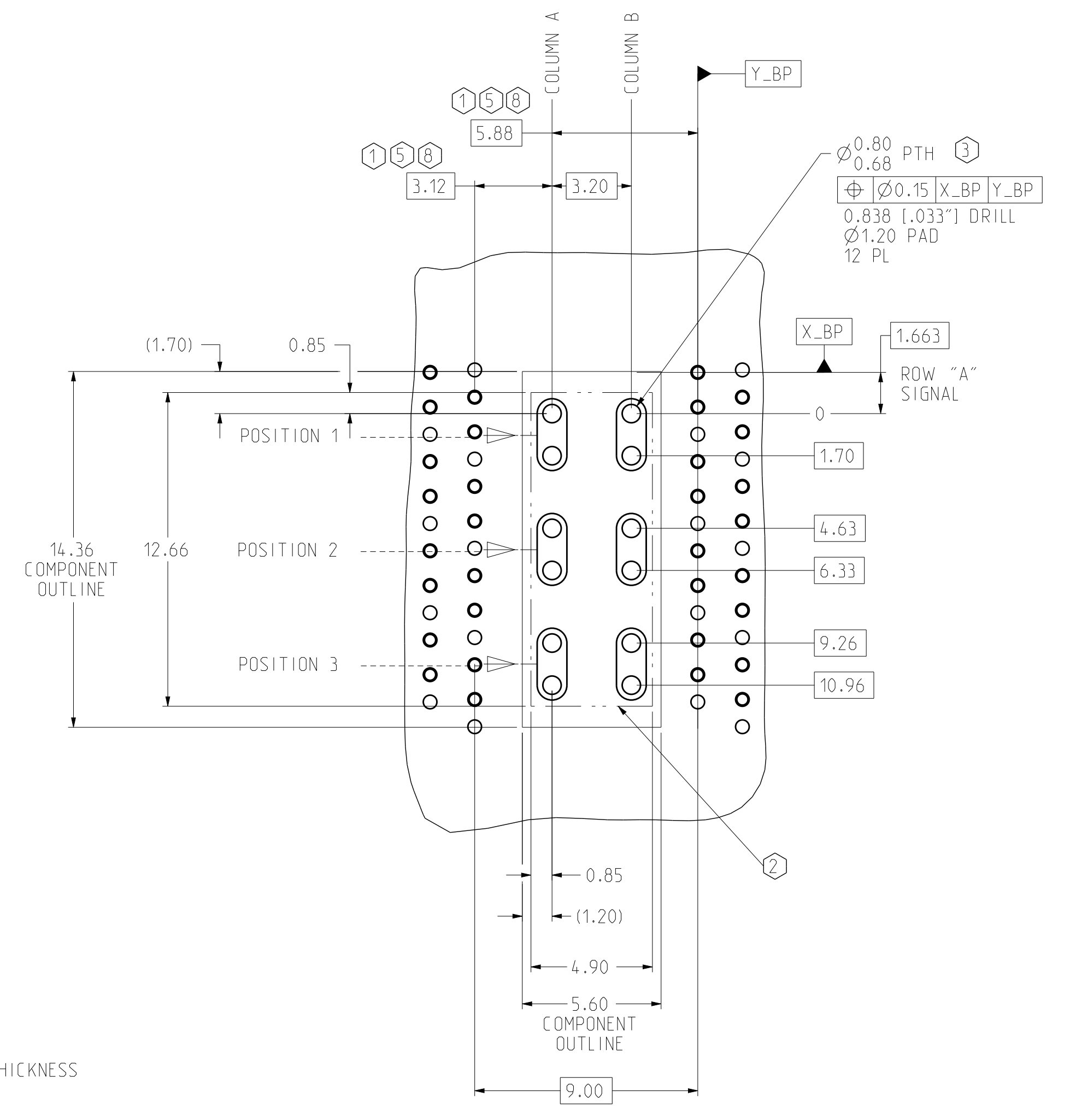
A



POWER ASSEMBLED WITH XCede HD SIGNAL MODULE



ISOMETRIC VIEW
SCALE 4/1



**RECOMMENDED BACKPLANE POWER
1 POSITION HOLE PATTERN**
SCALE 6/1

STANDARD XCede HD

- NOTES
- FOR EACH ADDITIONAL POWER MODULE, ADD 7.20mm
 - NO SURFACE TRACES IN KEEP OUT ZONE.
 - STATED PAD SIZE MAY REQUIRE FILLETING. SEE TB-2237 FOR ROUTING GUIDELINES.
 - REFER TO TB-2235 FOR XCede HD PRODUCT SPECIFICATIONS.
 - WHEN USING ENDCAPS BETWEEN SIGNAL WAFERS AND DC POWER MODULES ADD 1.80mm FOR EACH ENDCAP. VIEW SHOWN WITHOUT ENDCAPS. FOR ENDCAPS THAT ARE USED BETWEEN DC POWER MODULES AND DO NOT PLUG INTO A MULTI-UP BP POWER MODULE, ADD 1.80mm FOR EACH ENDCAP.
 - REFER TO BACKPLANE CUSTOMER USE DRAWINGS FOR ROW AND COLUMN ASSIGNMENTS.
 - BLADE POSITION A# CONTAINS PINS A#_1 AND A#_2.
 - SEE TABLE 2 FOR XCede HD AND TABLE 3 FOR XCede HD PLUS FOR OFFSET DIMENSION FOR ADJACENT SIGNAL COLUMN OF ALL CONFIGURATIONS.

INTERPRET PER ASME Y14.5M
CODE IDENT 31413

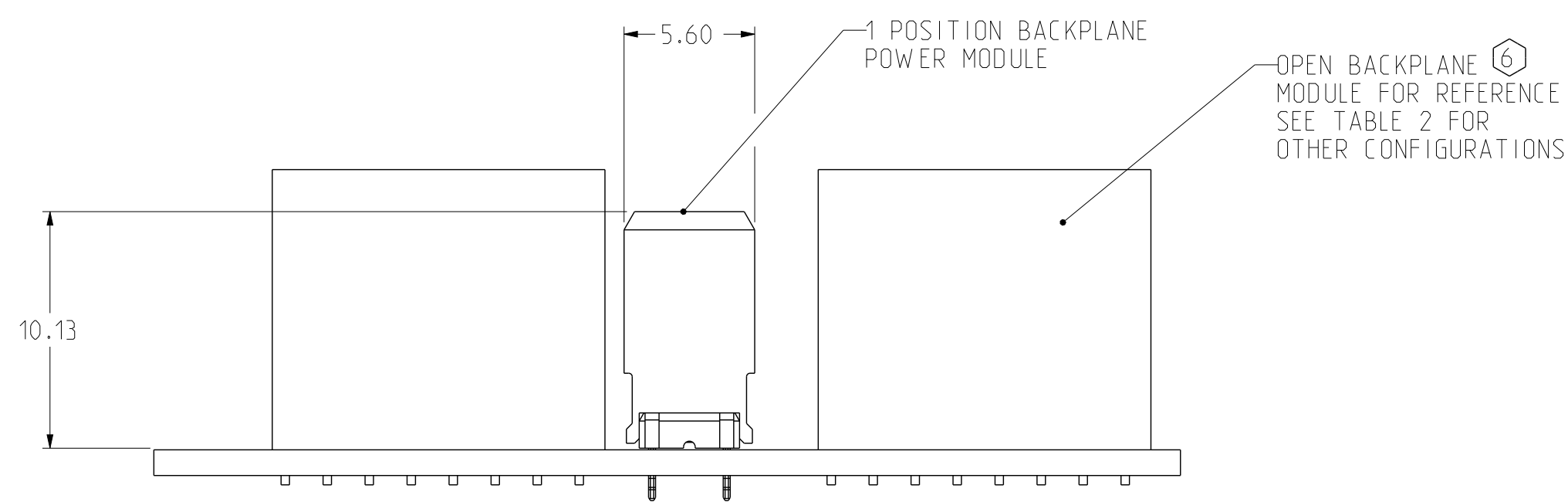
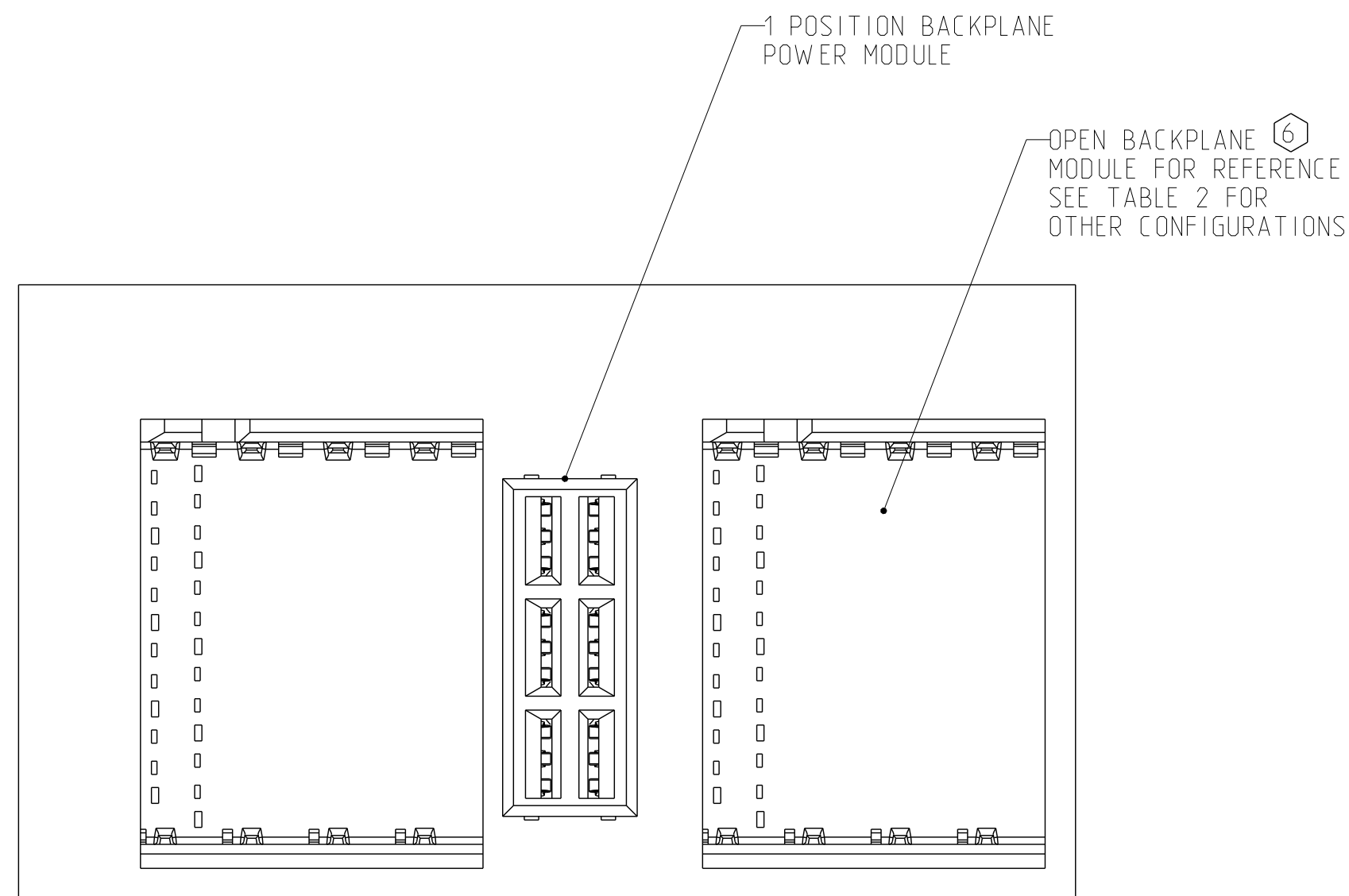
TOLERANCES	DESIGN	DATE	DESIGNER	Amphenol TCS A Division of Amphenol Corporation 200 Innovative Way, Nashua, NH 03062 603.879.3000
0.0 ±0.25	04/24/2014	04/24/2014	M.HANRAHAN	
0.00 ±0.13	04/24/2014	04/24/2014	HCL-AS	
0.000 ± -	04/24/2014	04/24/2014	M.HANRAHAN	
ANGLES ± 3°	04/24/2014	04/24/2014	M.HANRAHAN	
UNLESS OTHERWISE SPECIFIED DIMENSIONS ARE IN MM. DECIMAL MARKER IS A PERIOD				TITLE BACKPLANE POWER ASSEMBLY XCede HD 4 PAIR, GEN 2 MINI COMPLIANT
PART NO.				SEE TABLE 1
DRAWING NO.				C-968-4200-500
CREO ASSEM: Q1226-CU-HD-4PR-BP-G2-MINI-PWR				0.2
DRAWING: C968-4200-500				0.18
SIZE D				SCALE 4/1
				SHEET 1 OF 3

**CUSTOMER USE
DRAWING**

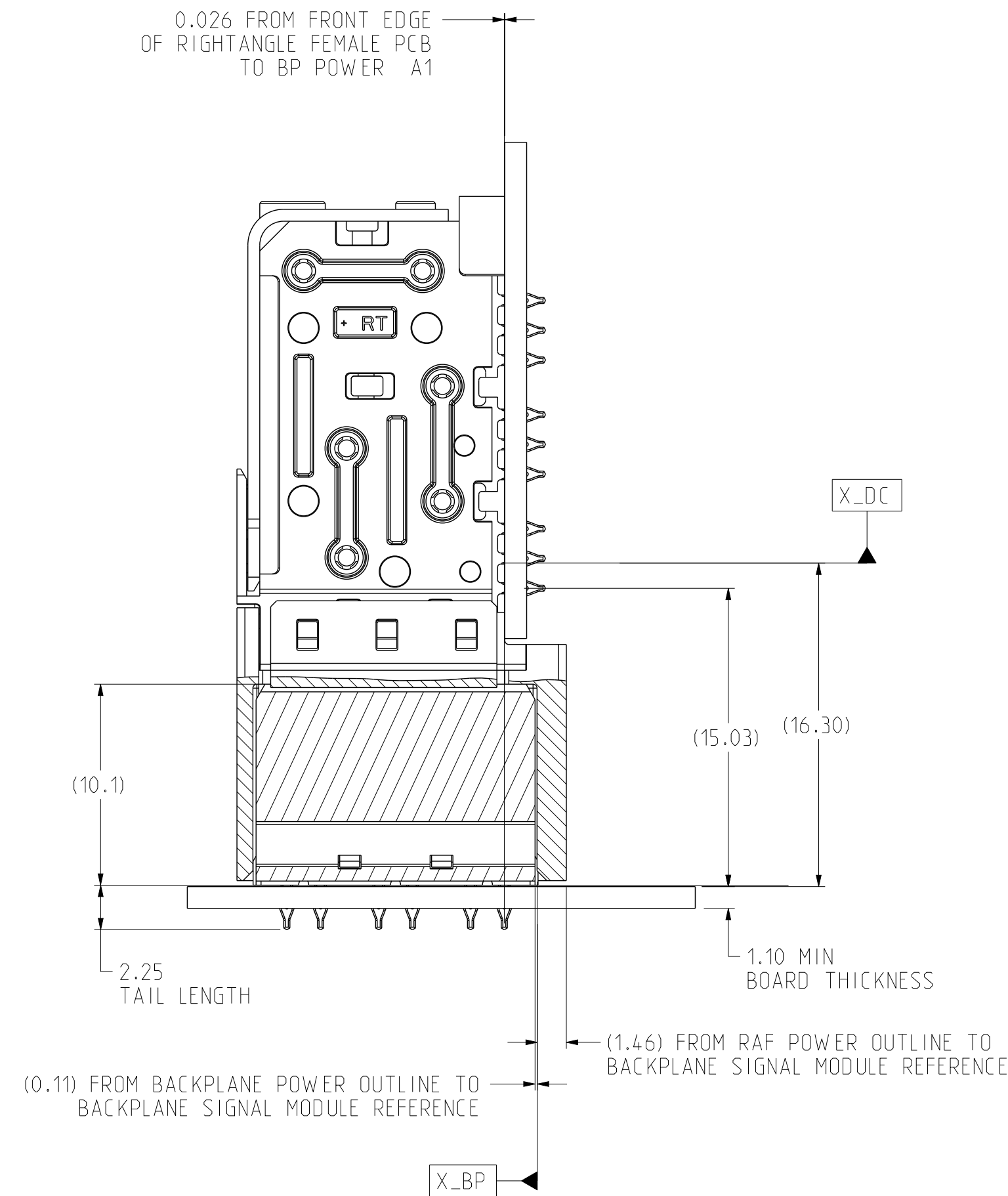
ZONE	REV	ECN NUMBER	DESCRIPTION	BY	DATE	APPROVED
			SEE SHEET 1			

TABLE 3 6 8

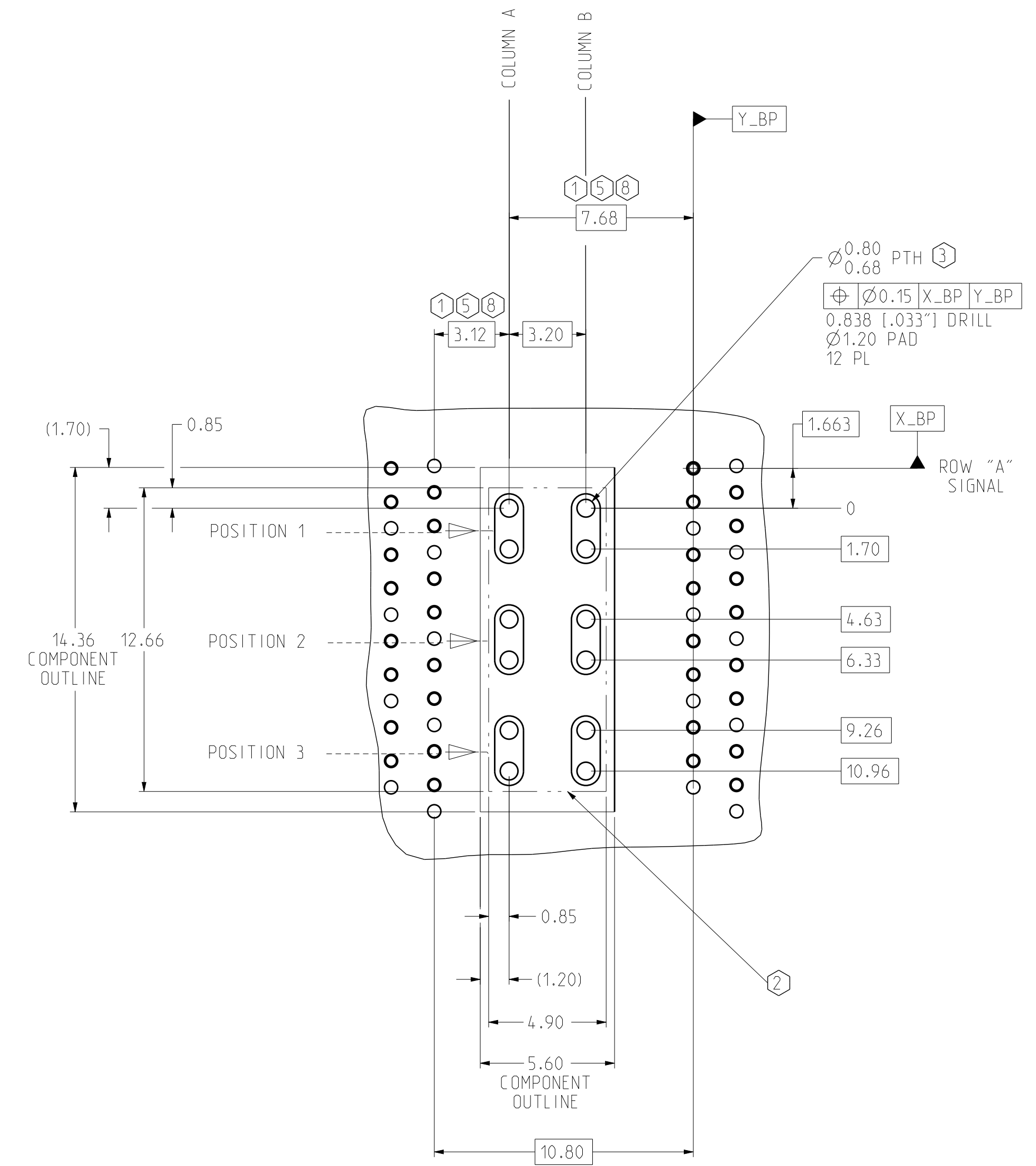
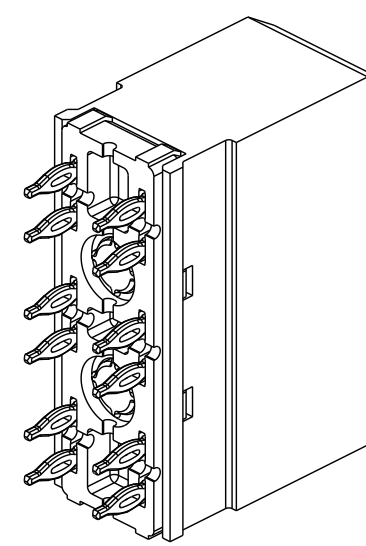
CONFIGURATION	DIM L	DIM R
OPEN	3.12	7.68
LEFT POLARIZED	3.12	14.88
RIGHT POLARIZED	10.32	7.68
LEFT WALL	3.12	9.48
RIGHT WALL	4.92	7.68
TWO WALL	4.92	9.48



POWER ASSEMBLED WITH XCede HD PLUS SIGNAL MODULE 6 8



ISOMETRIC VIEW
SCALE 4/1

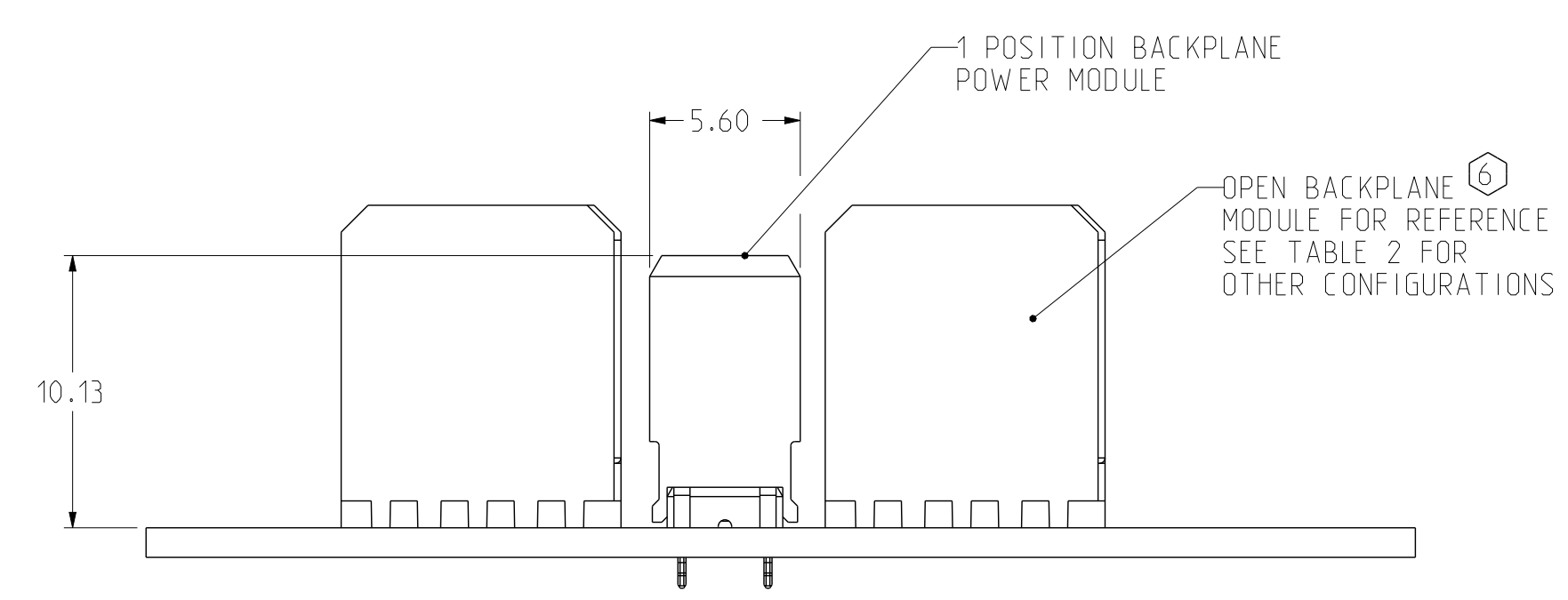
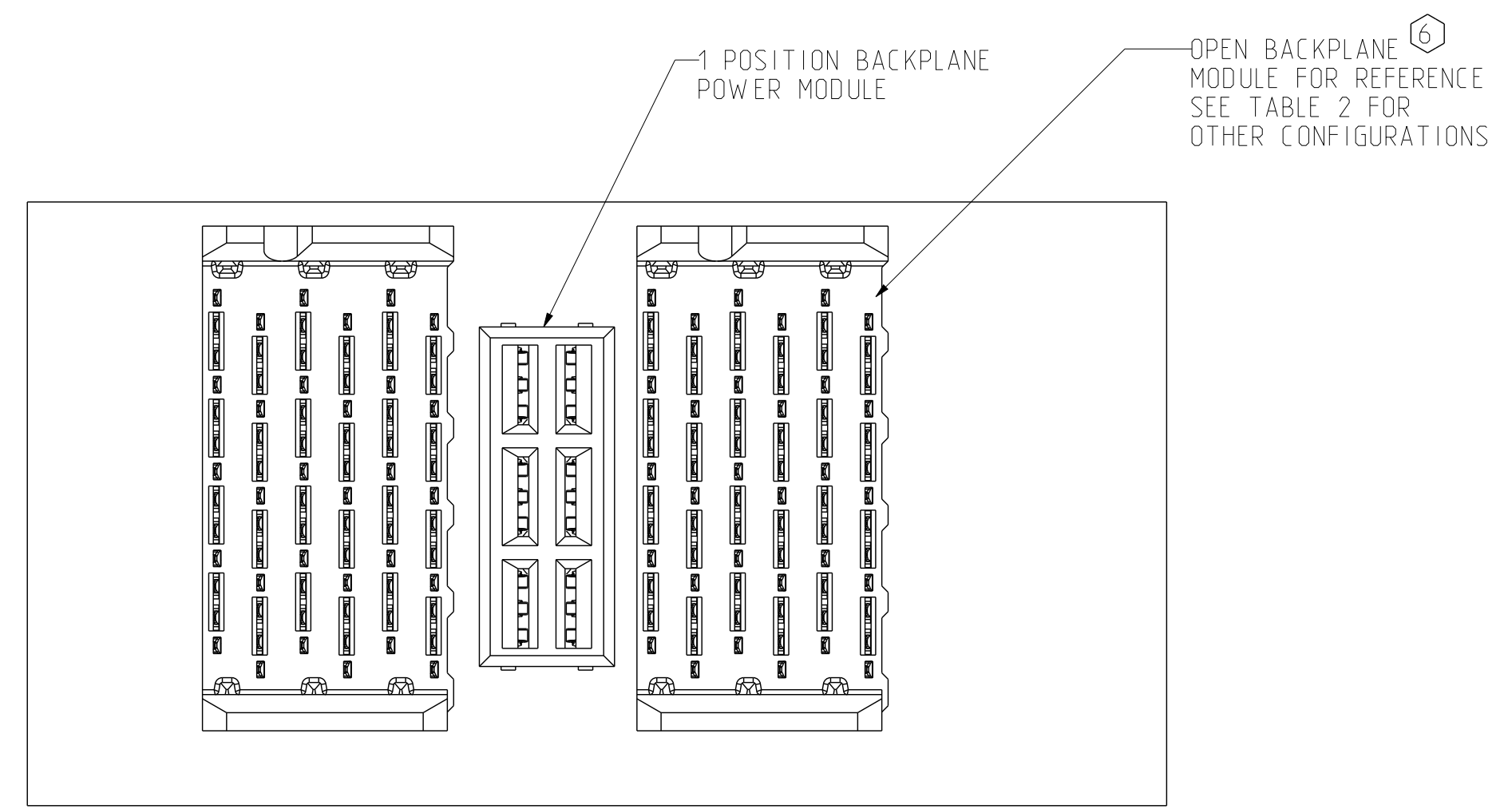


**RECOMMENDED BACKPLANE POWER
1 POSITION HOLE PATTERN**
SCALE 6/1

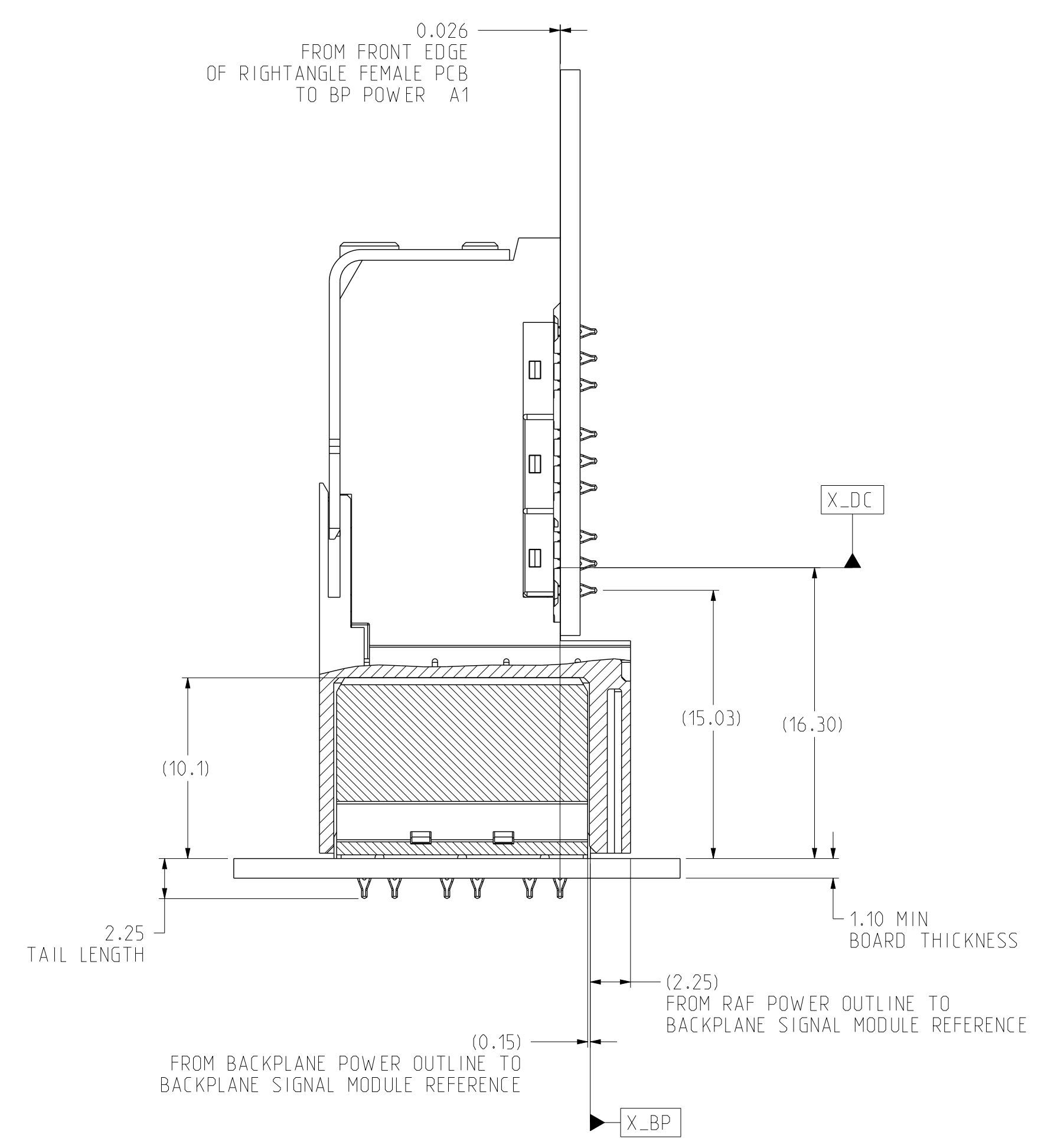
XCede HD PLUS

TOLERANCES		DESIGN 04/24/2014 M.HANRAHAN	Amphenol TCS A Division of Amphenol Corporation 200 Innovative Way, Nashua, NH 03062 603.879.3000
0.0	±0.25	DRAWN 04/24/2014 HCL-AS	
0.00	±0.13	CHK 04/24/2014 M.HANRAHAN	
0.000	± -	APVD 04/24/2014 M.HANRAHAN	
ANGLES	± 3°	TITLE BACKPLANE POWER ASSEMBLY XCede HD PLUS 4 PAIR, GEN 2 MINI COMPLIANT	
UNLESS OTHERWISE SPECIFIED DIMENSIONS ARE IN MM. DECIMAL MARKER IS A PERIOD.			PART NO. SEE TABLE 1
INTERPRET PER ASME Y14.5M			REV N/A
CODE IDENT 31413			DRAWING NO. C-968-4200-500
CUSTOMER USE DRAWING			REV C
SIZE D			CRED ASSEM: Q1226-CU-HD-4PR-BP-G2-MINI-PWR 0.2
SCALE 4/1			DRAWING: C968-4200-500 0.18
SHEET 2 OF 3			

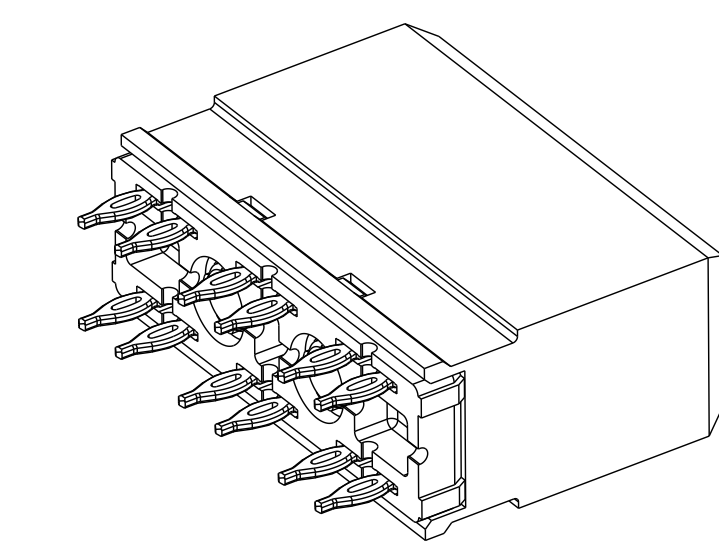
ZONE	REV	ECN NUMBER	DESCRIPTION	BY	DATE	APPROVED
			SEE SHEET 1			



POWER ASSEMBLED WITH Xcede HD2 SIGNAL MODULE 6 8



SECTION X-X SCALE 4/1



Xcede HD2 SCALE 8/1

TOLERANCES	DESIGN	DATE	DESIGNER	TITLE	PART NO.	REV
0.0 ±0.25	04/24/2014	M.HANRAHAN	HCL-AS			
0.0 ±0.13	04/24/2014	M.HANRAHAN	HCL-AS	Xcede HD 4 PAIR, GEN 2 MINI COMPLIANT		
0.000 ± -	04/24/2014	M.HANRAHAN				
ANGLES ± 3°	04/24/2014	M.HANRAHAN				

UNLESS OTHERWISE SPECIFIED DIMENSIONS ARE IN MM. DECIMAL MARKER IS A PERIOD

DRAWING NO.	C-968-4200-500	REV	C
CRED ASSEM	Q1226-CU-HD-4PR-BP-62-MINI-PWR	0.2	
DRAWING	C968-4200-500	0.18	
SIZE	D	SCALE	1/1
		SHEET	3 OF 3

INTERPRET PER ASME Y14.5M
CODE IDENT 314.13

CUSTOMER USE DRAWING

Amphenol TCS
A Division of Amphenol Corporation
200 Innovative Way, Nashua, NH 03082 603.879.3000