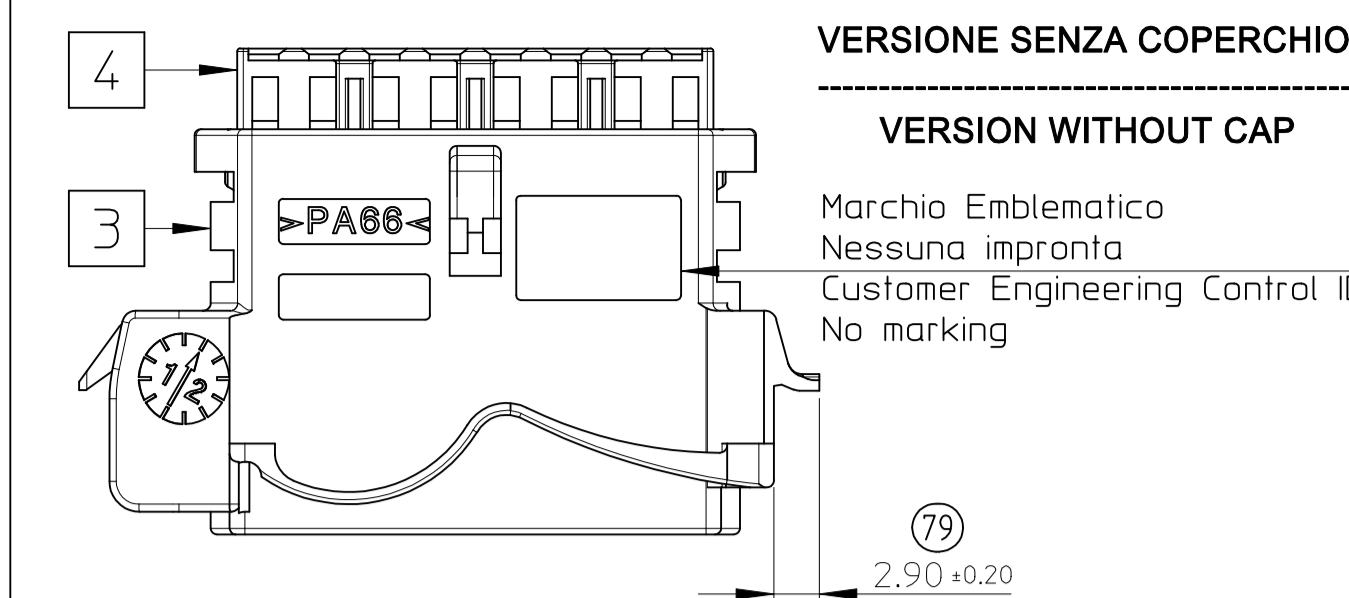
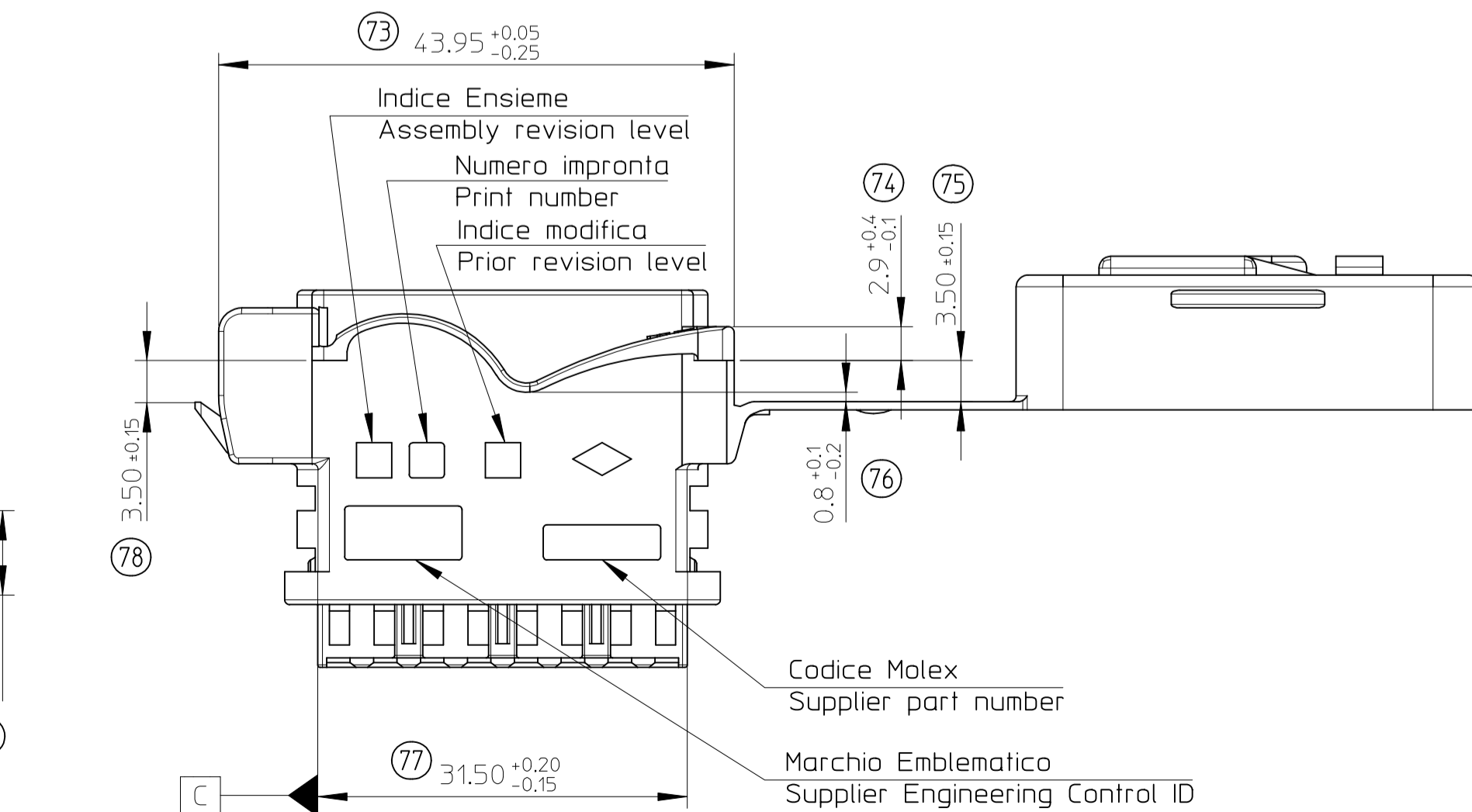
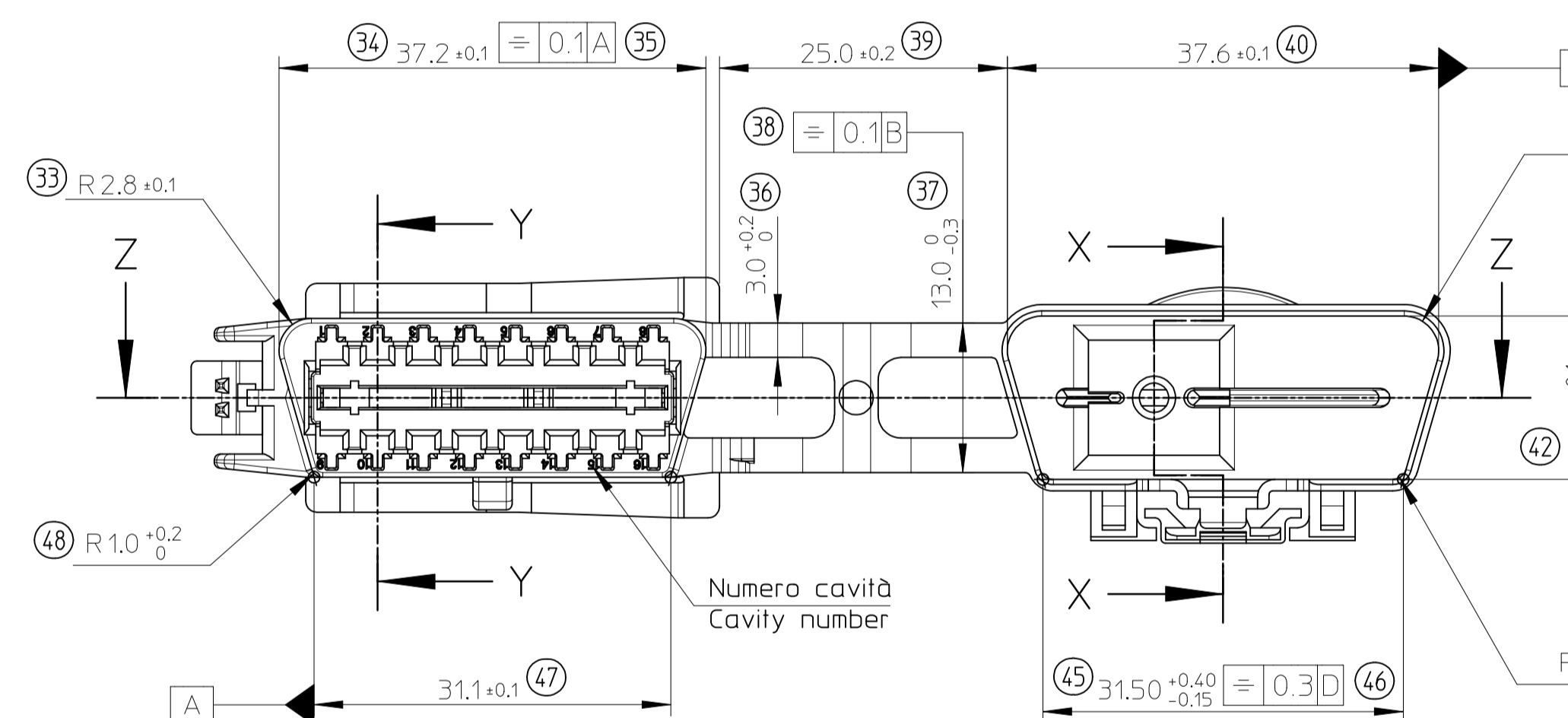
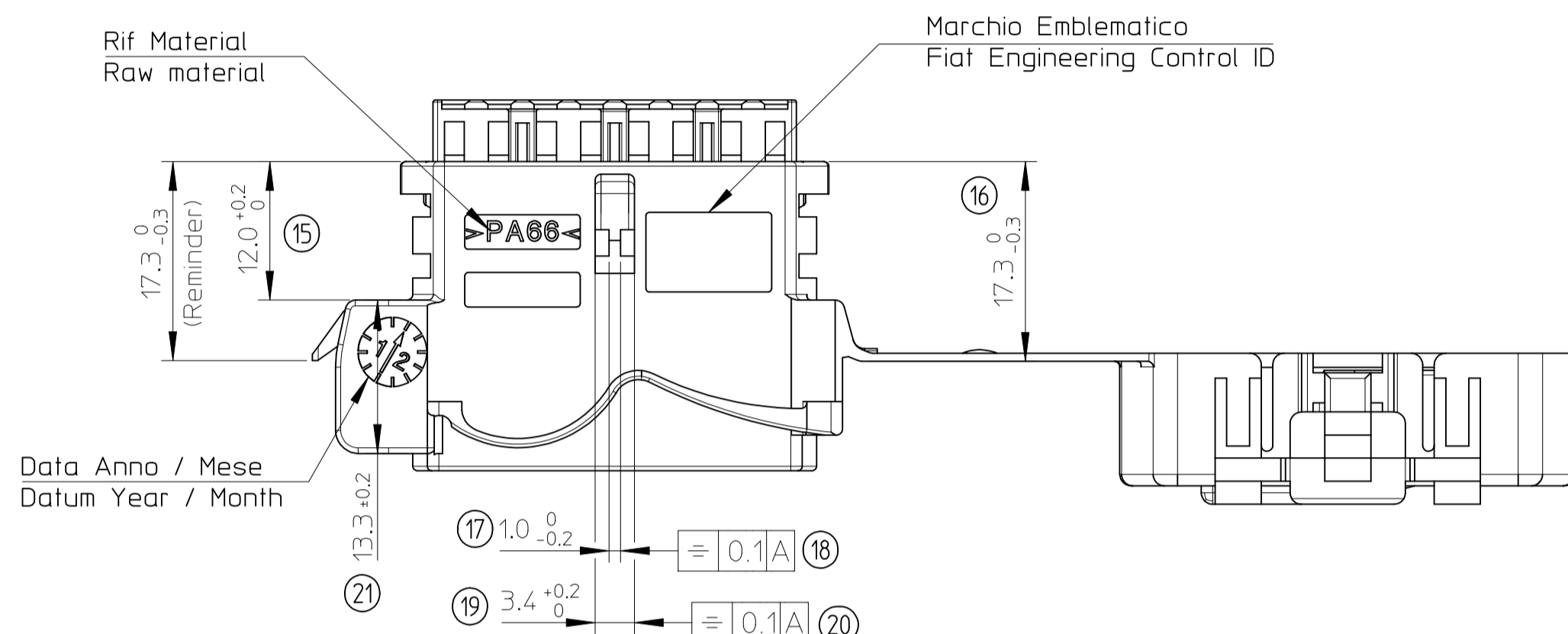
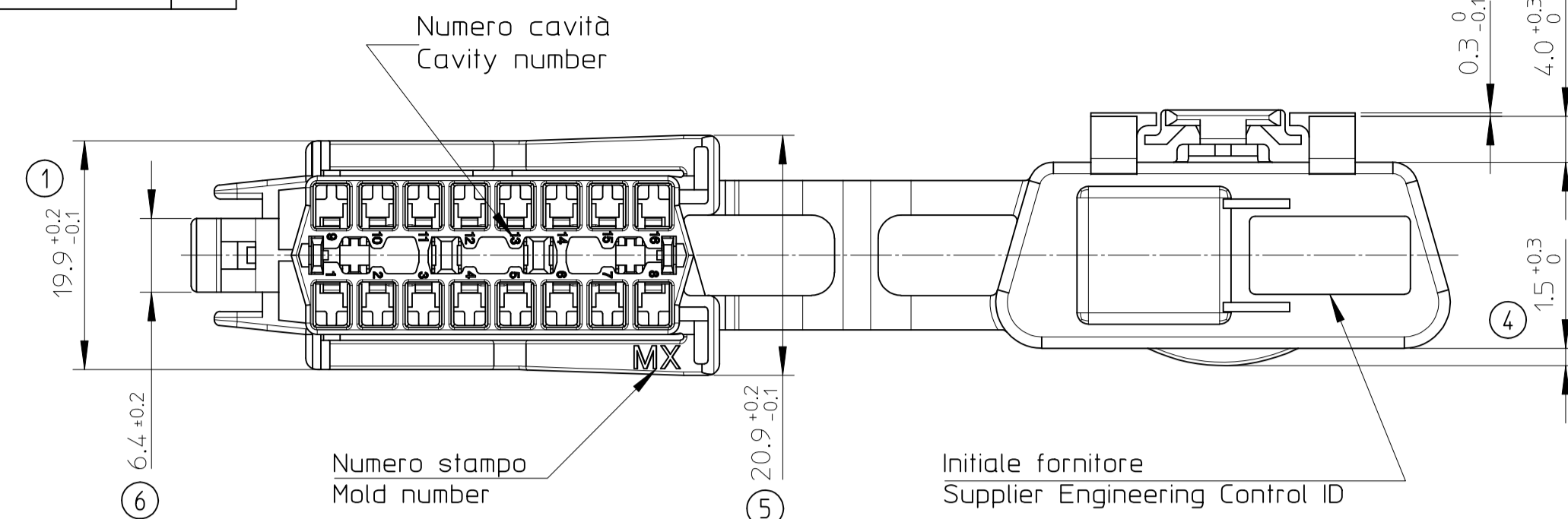
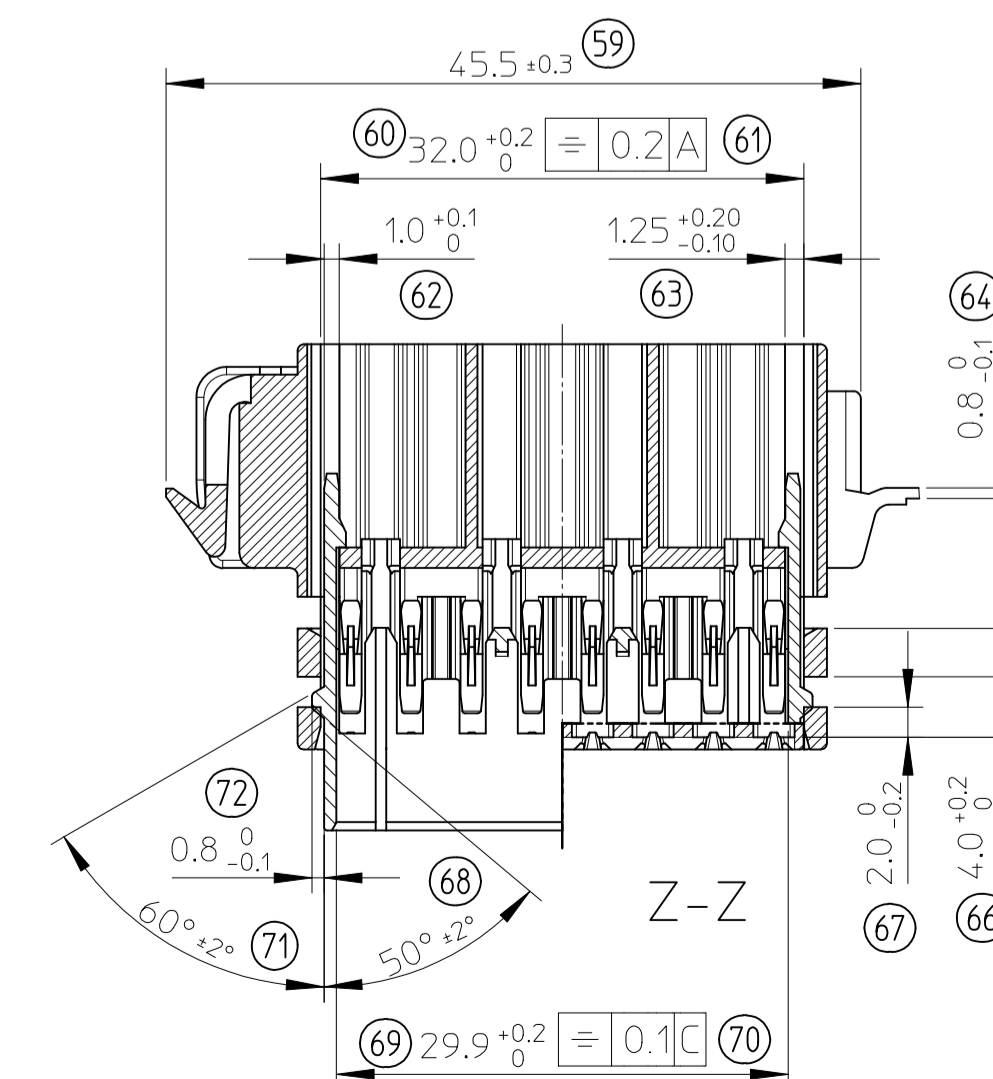
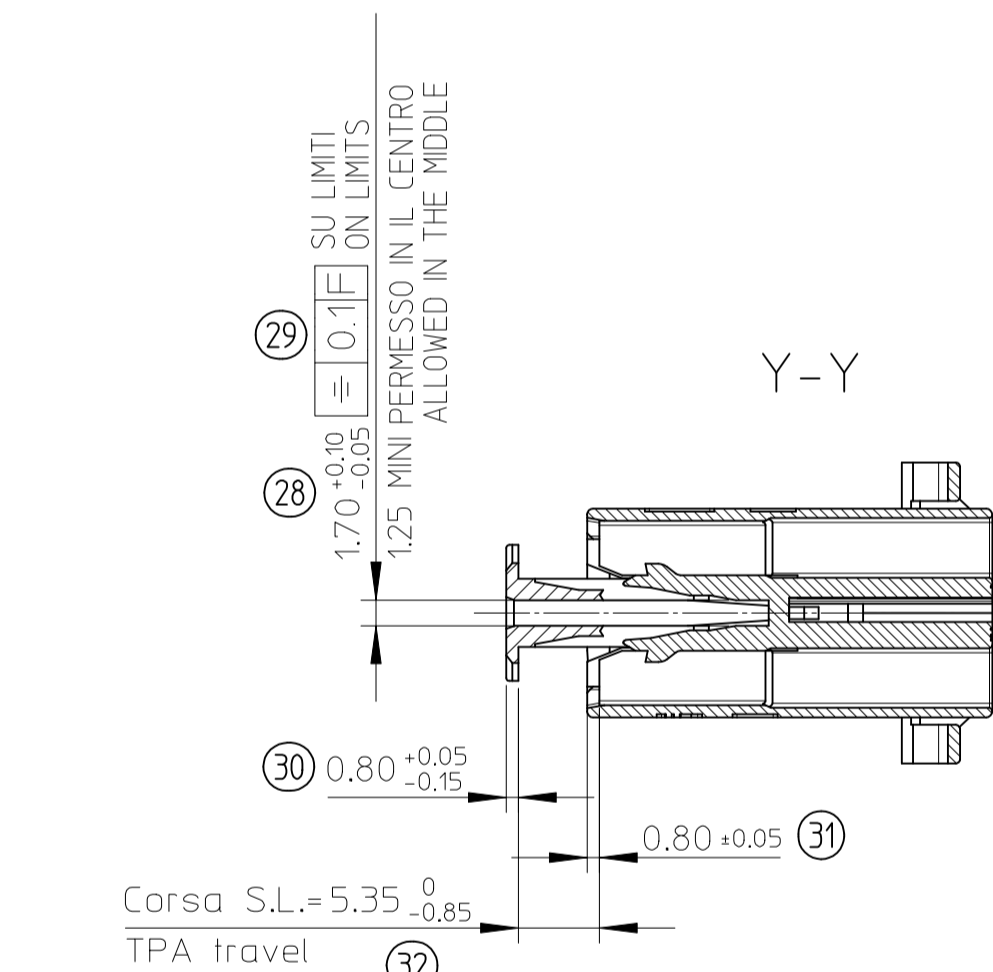
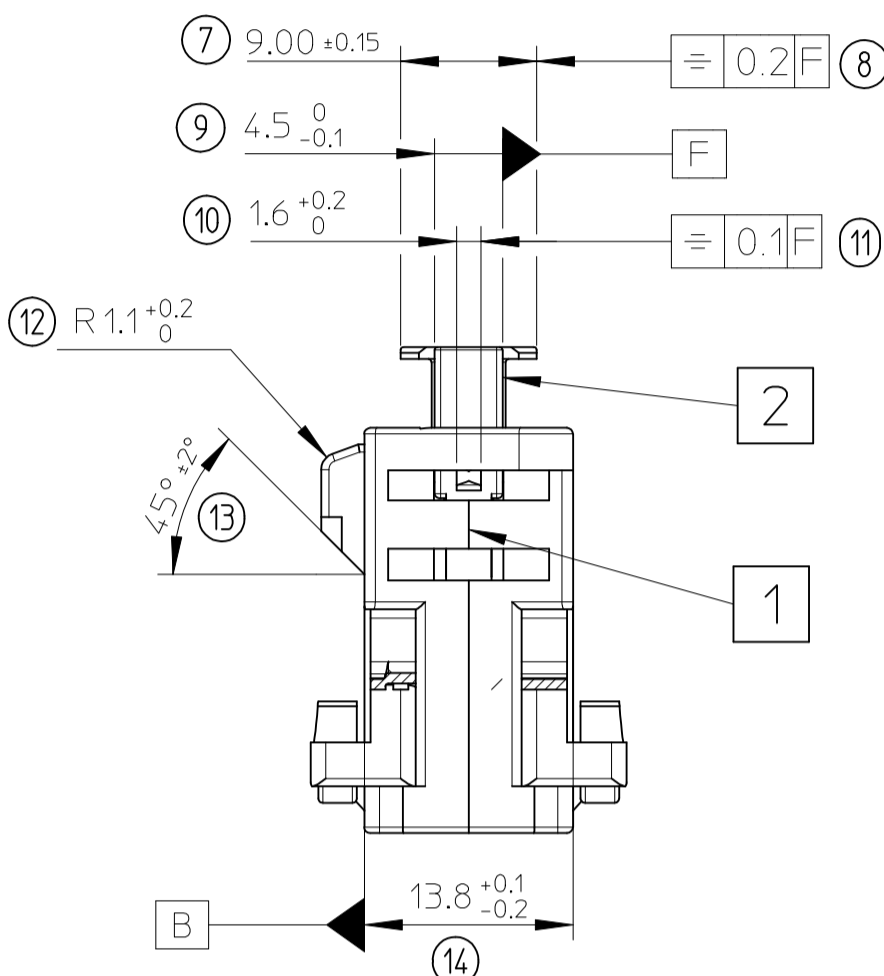


2	SECONDARY LOCK OBD2 TPA YEL	0989770114	PBT GIALLO 20% FV PBT YELLOW GF 20%	1
1	PF CON COPERCHIO NSCC OBD2 RCPT CONN 15 W/ CAP BLACK	0989770081	PA 6.6 NERO PA 6.6 BLACK	1
RIF REP	DENOMINAZIONE DESCRIPTION	CODICE PART NUMBER	MATERIALE MATERIAL	Qtià Qty

- LE DIMENSIONI CONTROLLARONO SU PARTI DI REHUMIDIFIED TRA 2 E 2.2%
- DIMENSIONS CHECKED ON REHUMIDIFIED PARTS BETWEEN 2 AND 2.2%

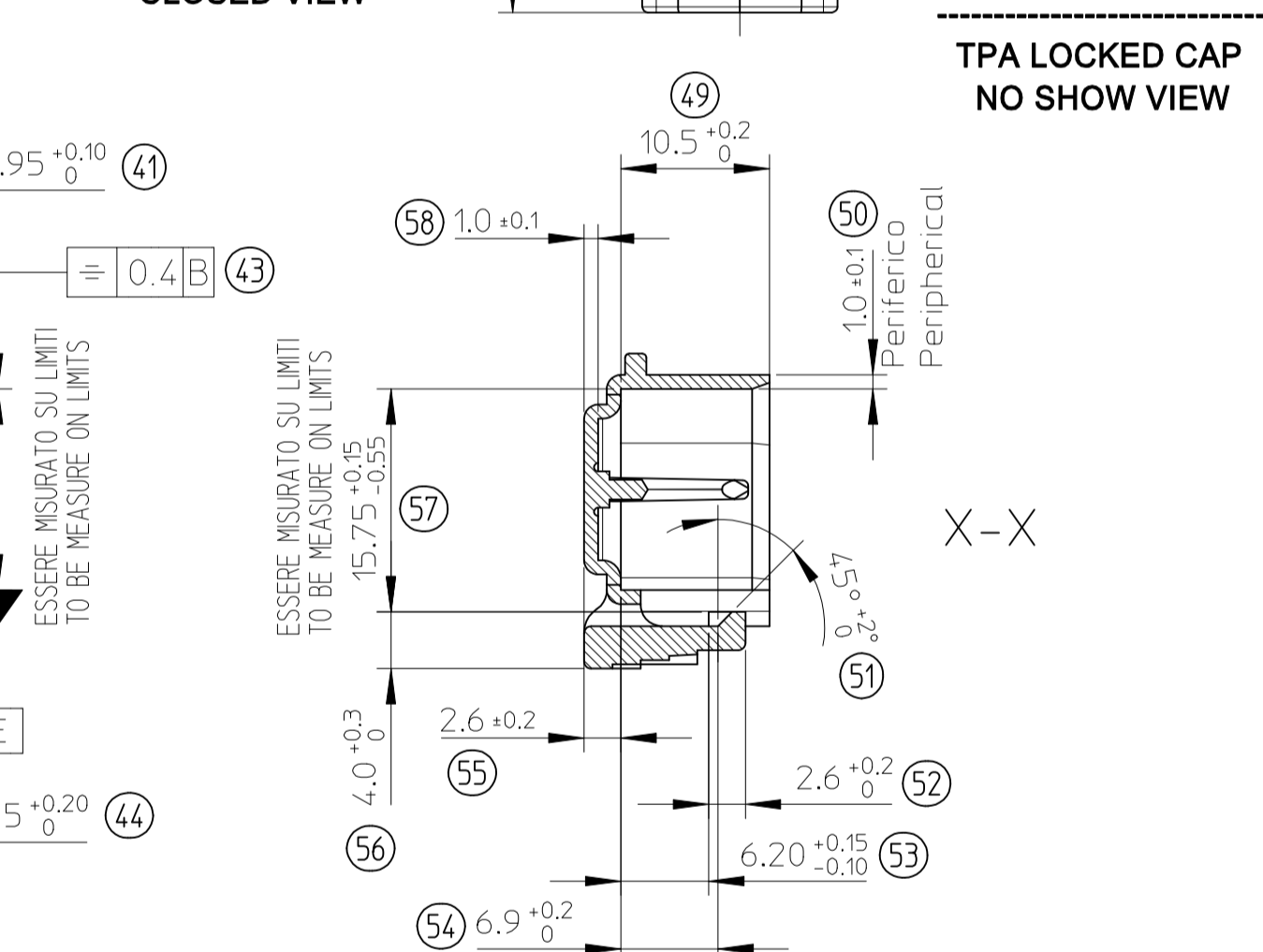
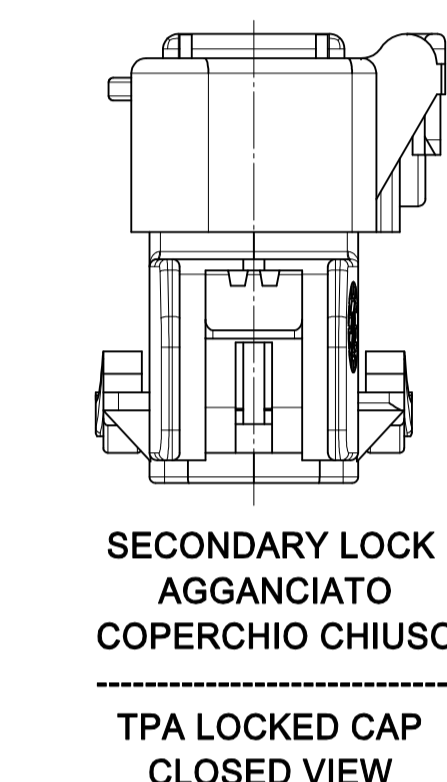
VERSIONE CON COPERCHIO
VERSION WITH CAP

ESSERE MISURATO SU LIMITI
TO BE MEASURED ON LIMITS



DIMENSIONI DISPONIBILE PER VERSIONE SENZA COPERCHIO :
DIMENSIONS AVAILABLE FOR VERSION WITHOUT CAP :
#1-#5-#6-#7-#8-#9-#12-#13-#14-#15-#19-#20-#22-#26
#32-#33-#34-#35-#47-#48-#59-#73-#77-#78-#79

4	SECONDARY LOCK OBD2 TPA YEL	0989770114	PBT GIALLO 20% FV PBT YELLOW GF 20%	1
3	PF SENZA COPERCHIO NSCC OBD2 RCPT CONN 15 W/O CAP BLACK	0989770091	PA 6.6 NERO PA 6.6 BLACK	1
RIF REP	DENOMINAZIONE DESCRIPTION	CODICE PART NUMBER	MATERIALE MATERIAL	Qtià Qty



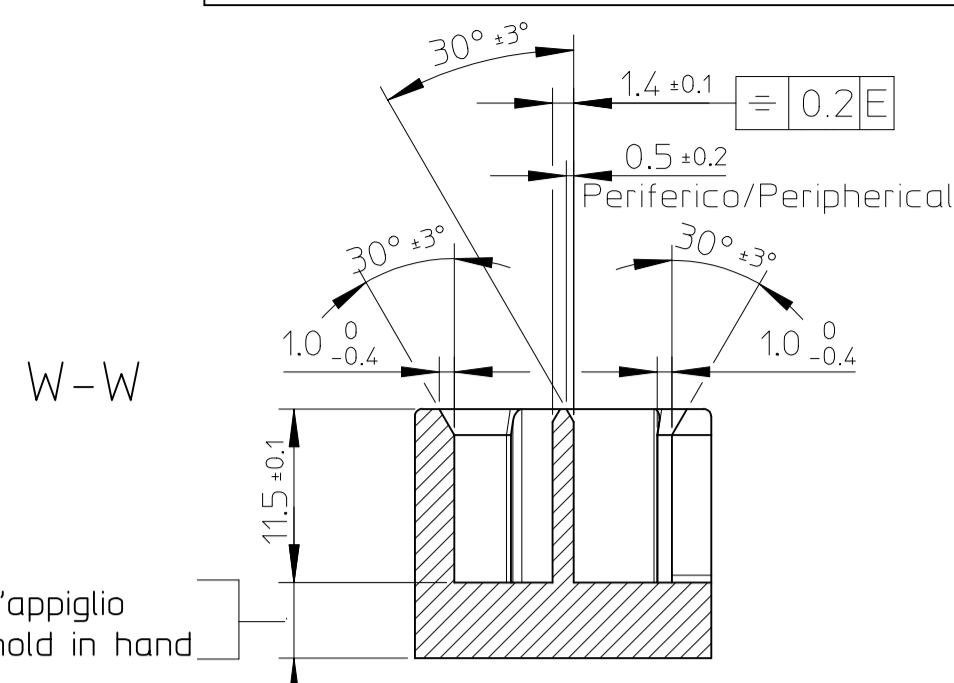
	PF SENZA COPERCHIO NSCC OBD2 RCPT CONN 15 W/O CAP	0989773081	NERO BLACK
	PF CON COPERCHIO NSCC OBD2 RCPT CONN 15 W/ CAP	0989771081	NERO BLACK
ASSY ASSY	DENOMINAZIONE DESCRIPTION	CODICE PART NUMBER	COLORE COLOUR

REVISED EC NO: G2017-0093 DRWN: PBO/SQUAIN 2017/04/12 CHKD: PLET/PIERRE 2017/04/18 APPR: OPLESSIS 2017/05/03	QUALITY SYMBOLS ▽=0 ▽=0 ▽=0	GENERAL TOLERANCES (UNLESS SPECIFIED)	DIMENSION STYLE MM ONLY	SCALE 2:1	DESIGN UNITS METRIC	FIRST ANGLE PROJECTION
		4 PLACES ± --- ± --- 3 PLACES ± --- ± --- 2 PLACES ± 0.20 ± --- 1 PLACE ± 0.20 ± --- 0 PLACE ± 0.20 ± ---	mm INCH	DRAWN BY PGRANDCL	DATE 2013/05/21	TITLE 16W OBD2 W/ CAP ASSY 16W OBD2 W/O CAP ASSY
		ANGULAR ± 2 °		CHECKED BY JDUCLOS	DATE 2013/05/21	
		DRAFT WHERE APPLICABLE MUST REMAIN WITHIN DIMENSIONS		APPROVED BY OPLESSIS	DATE 2017/05/03	
				MATERIAL NO. SEE CHART	DOCUMENT NO. RSD-98977-004	SHEET NO. 1 OF 3

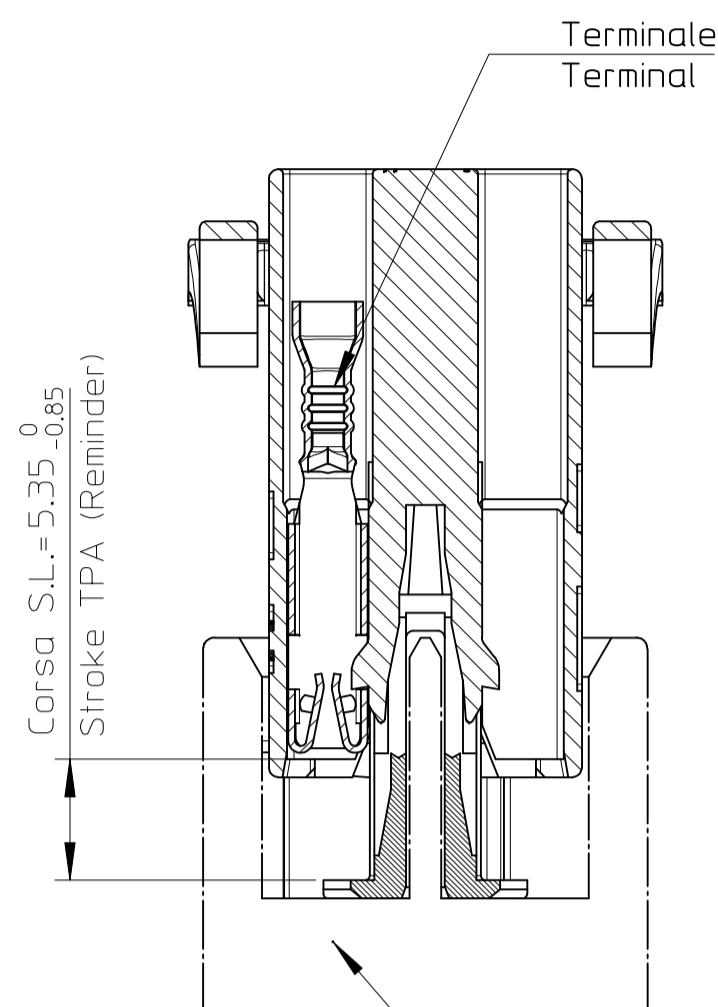
MODIFICATIONS

REV.	DESCRIPTIONS	NAME	DATE
A	- Update design - Added dim. 0.3 0/-0.1	PBO	98/10/22
B	- PC P/N serie : 50801221 ----> 50801241	PBO	98/12/04
C	- Update PC and TPA design - Removed customer P/N. - Added ITG code - Sheet 1/3 was 3/3 - Section A-A : Suppress dim. 7.05 ±0.10 - 1.65 ±0.10 Added dim. 8.7 ±0.2/0 - 6.6 ±0.1 and 50° ±2°	PBO	01/07/04
D	- Key color : Yellow was white - Key P/N : 861390314 was 861390319 - Section A-A : 31.95 ±0.1/0 SYM/0.2/A was SYM/0.1/A 5.9 0/-0.2 was 5.9 0/-0.1 - 9.2 0/-0.1 was 9.3 ±0.1/-0.05 R2.8 ±0.1/0 was R2.5 ±0.2/0 - 37.2 ±0.1 was 37 ±0.1 31.1 ±0.1 was 31.2 ±0.1 - 2 ±0.1/-0.2 was 2 ±0.1 3.5 ±0.2/0 (2x) was 3.5 ±0.2/+0.1 (2x) - 37.6 ±0.1 was 37.4 ± 0.1 31.5 ±0.1 SYM/0.3/D was 31.6 ±0.1 SYM/0.1/D R2.95 ±0.1/0 was R2.65 ±0.1/0 - R1.15 ±0.2/0 was R1.15 ±0.1/0 29 ±0.15 SYM/0.3/D was 29.4 +/-0.4 SYM/0.1/D 14.2 ±0.1 SYM/0.2/B was SYM/0.1/A - Section B-B : 4 ±0.3/0 was 4 ±0.2/0 6.9 ±0.2/0 was 6.9 ±0.1/0 - 1.3 ±0.1 was 1.3 0/-0.1 - Section A-A : 7.2 0/-0.1 was 6.7 ±0.1/-0.05 Added dim. 29.9 ±0.2/0 SYM/0.1/C - Section C-C : 1.7 ±0.1/-0.05 (1.25 mini in center) was 1.7 ±0.1 - Added Ref. C - Added Mold number	PBO	01/09/11
E	- 9.2 0/-0.3 was 9.2 0/-0.1 - 29 ±0.15/-0.25 was 29 ±0.15 13 0/-0.3 was 13 0/-0.2 - Section B-B : 1.7 0/-0.15 was 1.7 0/-0.1	PBO	01/11/20
F	- Added strap between two strip - Suppress dim. 0.5 MAXI - Section B-B : 2.6 ±0.2/-0.1 was 2.6 ±0.2/0 - See sheet 2/3 and 3/3	FT	03/12/10
G	- 31.8 ±0.05/-0.1 was 31.5 ±0.15 - Section A-A : 0.7 0/-0.1 was 0.8 0/-0.1	PBO	04/03/31
H	- Revise design of the latch - Removal tolerance : ±0.3B (x3) - Removal dimensions : 4.6 ±0.1/0 - ±0.3B - 30 ±2/0 8.7 ±0.2/0 - 6.6 ±0.1/0 - 0.8 ±0.05/-0.15 - 1.2 0/-0.1 29 ±0.15/-0.25 - ±0.3D - 1.7 0/-0.15 - ±0.1E - 1.6 ±0.1/0 9 ±0.1/0 - 1.3 ±0.1 - ±0.2E - 43.95 ±0.05/-0.25 replace 43.95 ±0.15 - 31.5 ±0.2/-0.1 replace 31.8 ±0.05/-0.1	LP	06/07/11
I	- Dimensions : 9 ±0.15 was 9.2 0/-0.3 - ±0.2F was ±0.1F 31.95 ±0.15/-0.05 was 31.95 ±0.15/0 - 2.9 ±0.4/-0.1 was 2.9 ±0.4/0 3.5 ±0.25/0 was 3.5 ±0.2/0 - R2.8 ±0.1 was R2.8 ±0.1/0 0.4 0/-0.3 was 0.4 0/-0.2 - 9.7 0/-0.3 was 9.7 0/-0.2 Added 16.25 mini authorized after cooling 15.75 ±0.15/-0.55 was 15.75 ±0.15 - 2.6 ±0.2 was 2.6 ±0.2/-0.1 6.2 ±0.15/-0.1 was 6.2 ±0.1 - 14.2 ±0.1/-0.2 was 14.2 ±0.1 3.5 ±0.25/0 was 3.5 ±0.2/0 - 0.8 0/-0.1 was 0.7 0/-0.1 - Created dim. 45.5 ±0.3 - Canceled 43.35 ±0.15 and 2 ±0.1/-0.2 - 0989770114 was 0989770124	LP	07/09/17
J	- Dimensions : Pos. 43 : Sym 0.4 was Sym 0.2 Pos. 45 : 31.5 ±0.4/-0.15 was 31.5 ±0.1 Pos. 60 : 32.0 ±0.2/0 was 31.95 ±0.15/-0.05 Pos. 75 : 3.5 ±0.15 was 3.5 ±0.25/0 Pos. 78 : 3.5 ±0.15 was 3.5 ±0.25/0 - Deleted French Language. - Drwg redone in the Molex CAD System.	PGR	13/05/29
K	- Add version without cap P/N : 0989773081	PBO	17/02/08
L	- Update supplier P/N	PBO	17/04/12

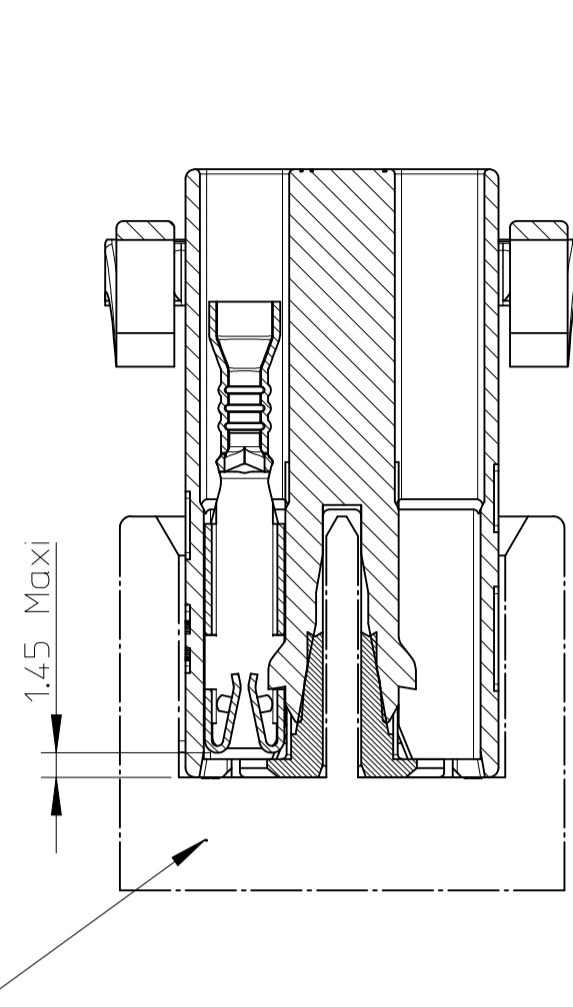
SEDE DI CHIUSURA DEL SECONDARY LOCK – FIXTURE INTERFACE TPA MATE



SEZIONE SECONDARY LOCK APERTO
TPA PRE-LOCKED



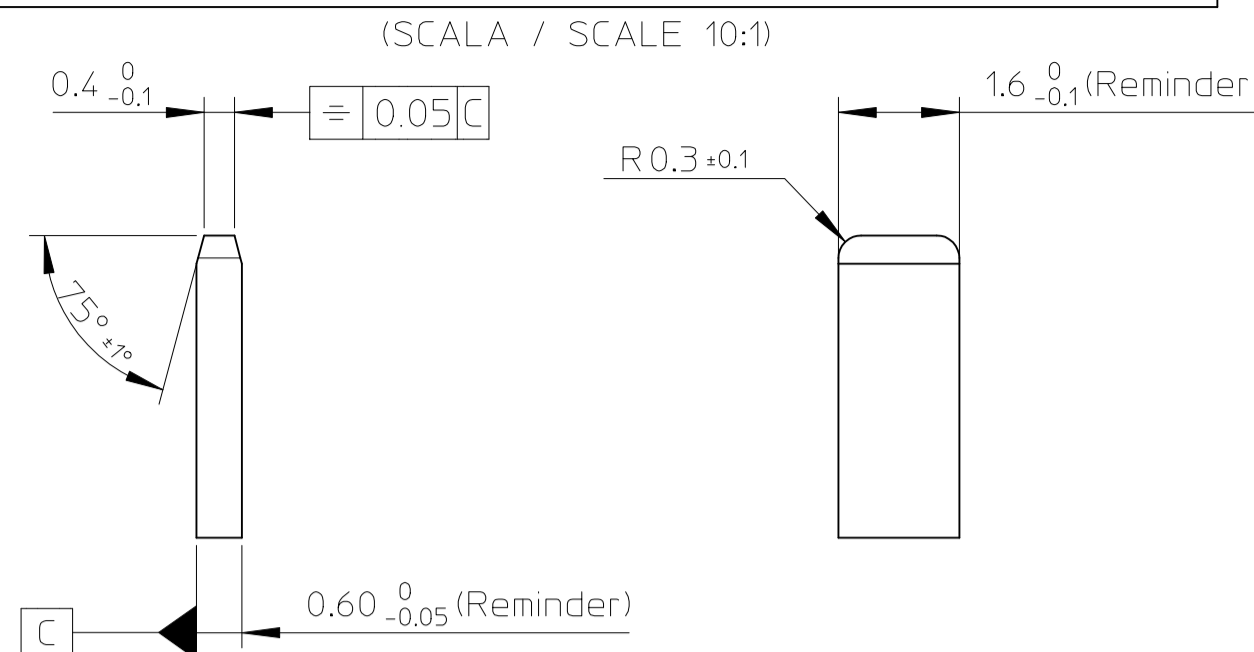
SEZIONE SECONDARY LOCK AGGANCIATO
TPA LOCKED



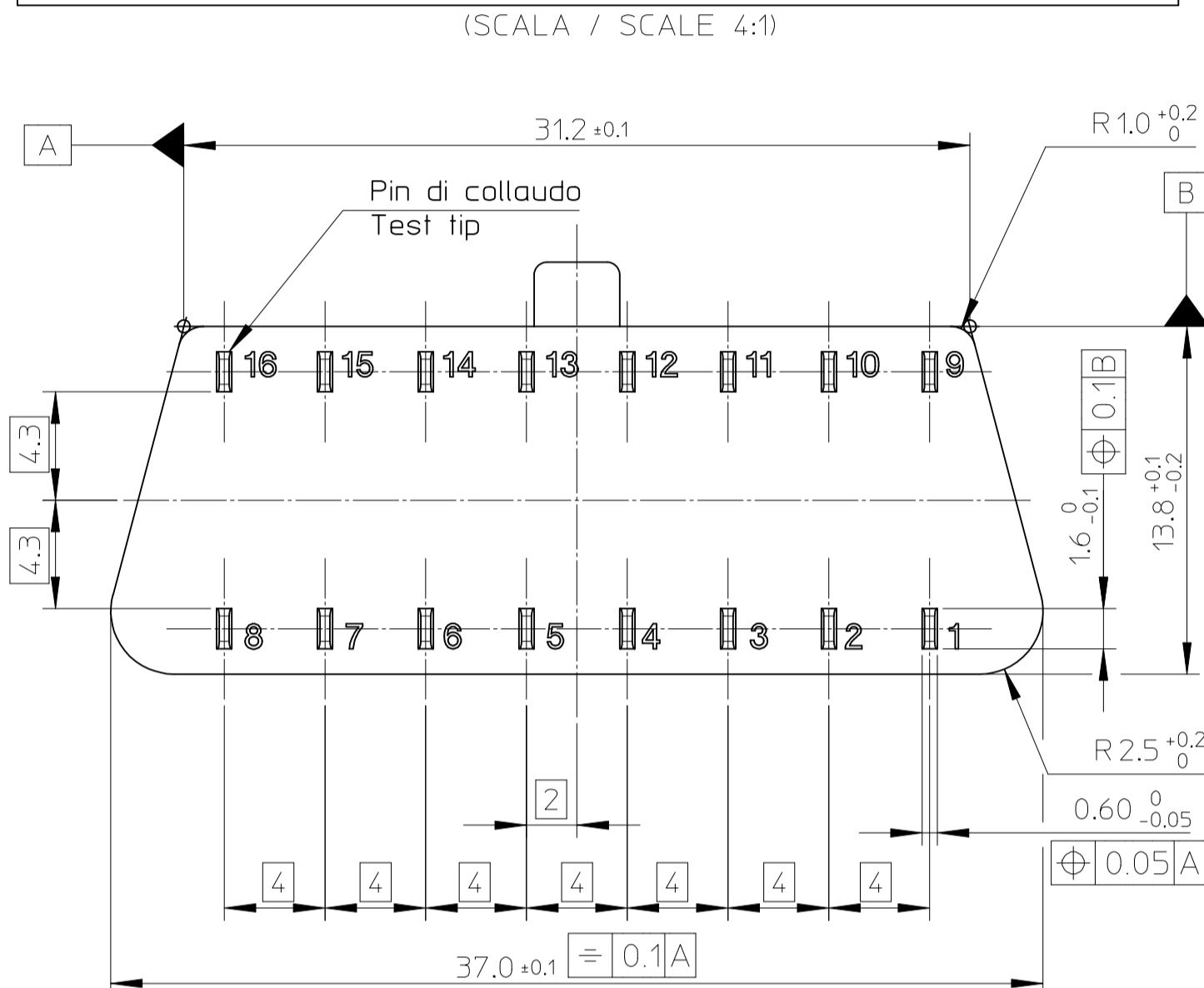
Sede di chiusura del secondary lock
Fixture TPA mate

POSIZIONE DEI PIN DI COLLAUDO – TEST PIN LOCALISATION

ESTREMITA PIN DI COLLAUDO / TEST TIP EXTREMITY

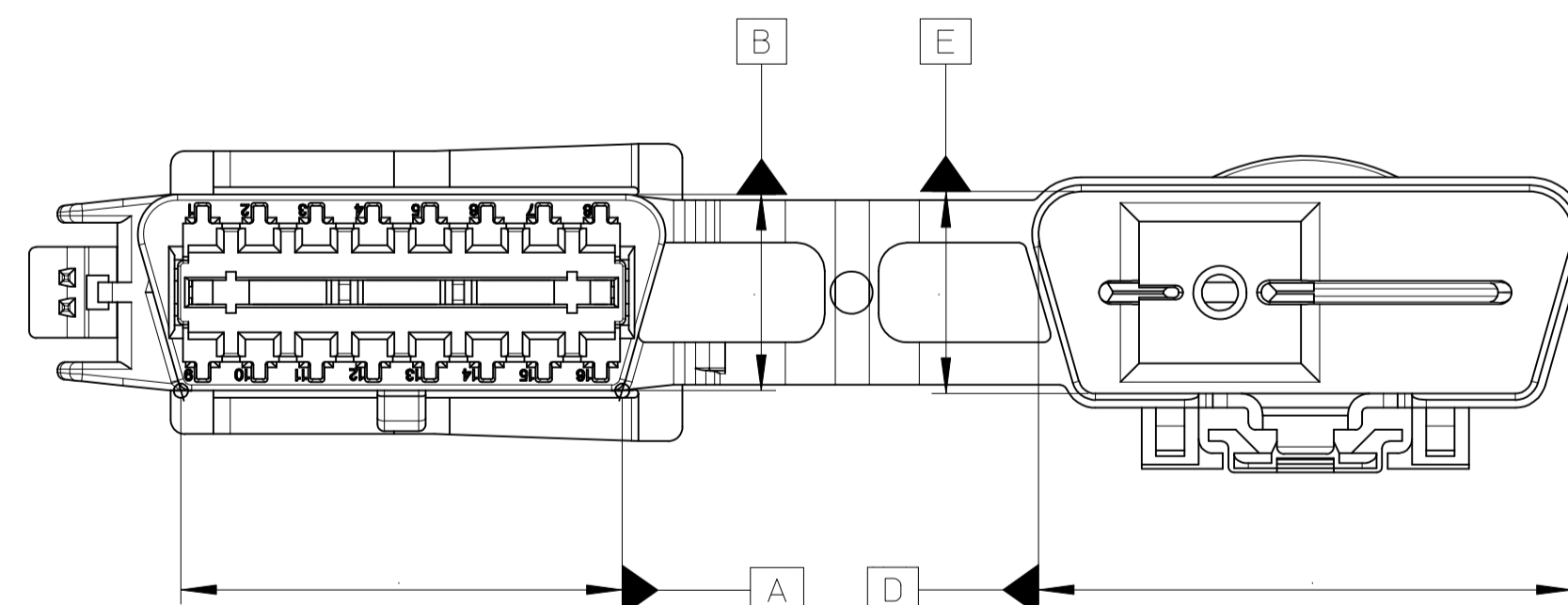


POSIZIONE VISTA ANTERIORE / LOCALISATION SIDE VIEW

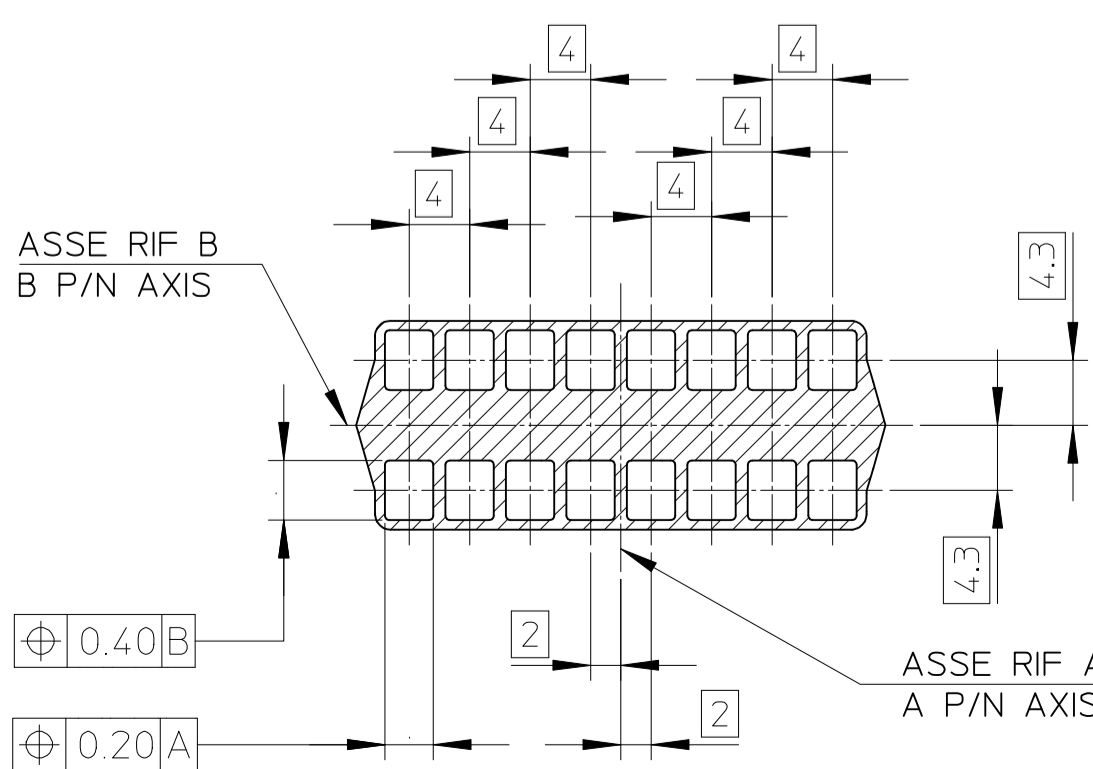


- FORZA DI CHIUSURA DEL SECONDARY LOCK = 45N +5N
- FORZA DI PRESSIONE DEL PIN IN COLLAUDO SUL LATO FRONTALE DEL TERMINALE = 5N mini à 20N Maxi
- HOLDING FORCE ONTO TPA = 45N +5N
- TEST PIN PRESSURE OF TERMINAL FRONT SIDE = 5N mini to 20N Maxi

SISTEMA DI RIFERIMENTO GEOMETRICO – GEOMETRICAL REFERENCES REMINDER



POSIZIONE DELLE RISPETTIVE CAVITA – CAVITIES POSITION



REVISED	EC NO: G2017-0093	DRWN: PBOSSOIAIN 2017/04/12	CHKD: FPEITPIERRE 2017/04/18	APPR: OPLESSIS 2017/05/03
M				

QUALITY SYMBOLS	GENERAL TOLERANCES (UNLESS SPECIFIED)	
	mm	INCH
▽ = 0	4 PLACES ± ---	± ---
▽ = 0	3 PLACES ± ---	± ---
▽ = 0	2 PLACES ± 0.20	± ---
	1 PLACE ± 0.20	± ---
	0 PLACE ± 0.20	± ---
	ANGULAR ± 2 °	
	DRAFT WHERE APPLICABLE MUST REMAIN WITHIN DIMENSIONS	

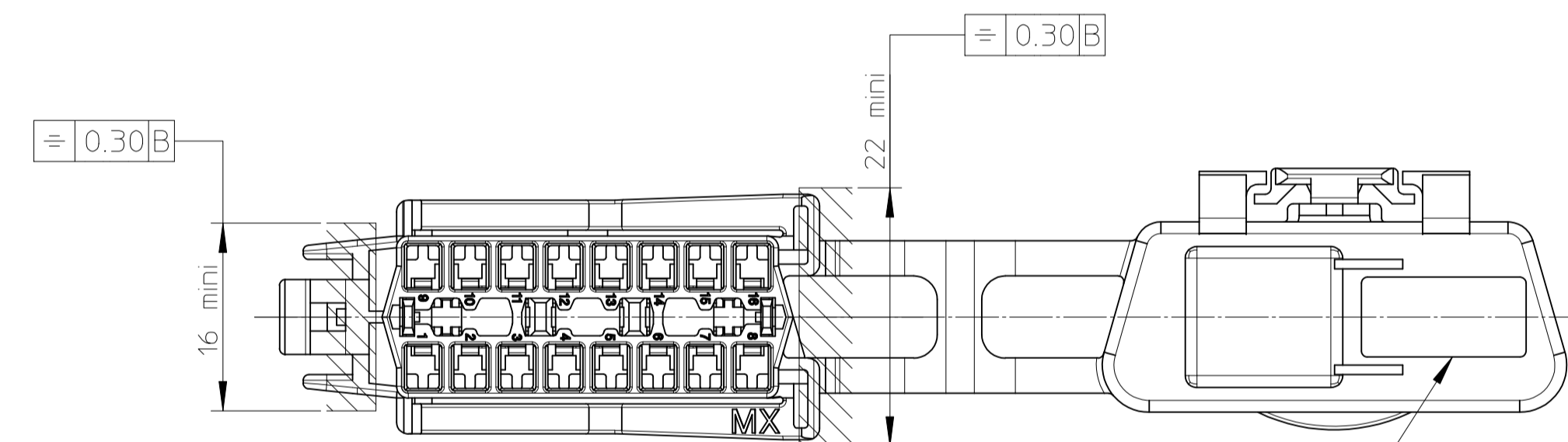
DIMENSION STYLE		SCALE	DESIGN UNITS	FIRST ANGLE PROJECTION
MM ONLY		2:1	METRIC	
DRAWN BY	DATE	TITLE		
PGRANDCL	2013/05/21	16W OBD2 W/ CAP ASSY		
CHECKED BY	DATE	16W OBD2 W/O CAP ASSY		
JDUCLOS	2013/05/21			
APPROVED BY	DATE			
OPLESSIS	2017/05/03			
MATERIAL NO.		DOCUMENT NO.		
SEE SHEET 1		RSD-98977-004		
SIZE	THIS DRAWING CONTAINS INFORMATION THAT IS PROPRIETARY TO MOLEX INCORPORATED AND SHOULD NOT BE USED WITHOUT WRITTEN PERMISSION			
A1				

DRAWN BY		DATE	TITLE	
PGRANDCL		2013/05/21	16W OBD2 W/ CAP ASSY	
CHECKED BY		DATE	16W OBD2 W/O CAP ASSY	
JDUCLOS		2013/05/21		
APPROVED BY		DATE		
OPLESSIS		2017/05/03		
MATERIAL NO.		DOCUMENT NO.		
SEE SHEET 1		RSD-98977-004		
SIZE	THIS DRAWING CONTAINS INFORMATION THAT IS PROPRIETARY TO MOLEX INCORPORATED AND SHOULD NOT BE USED WITHOUT WRITTEN PERMISSION			
A1				

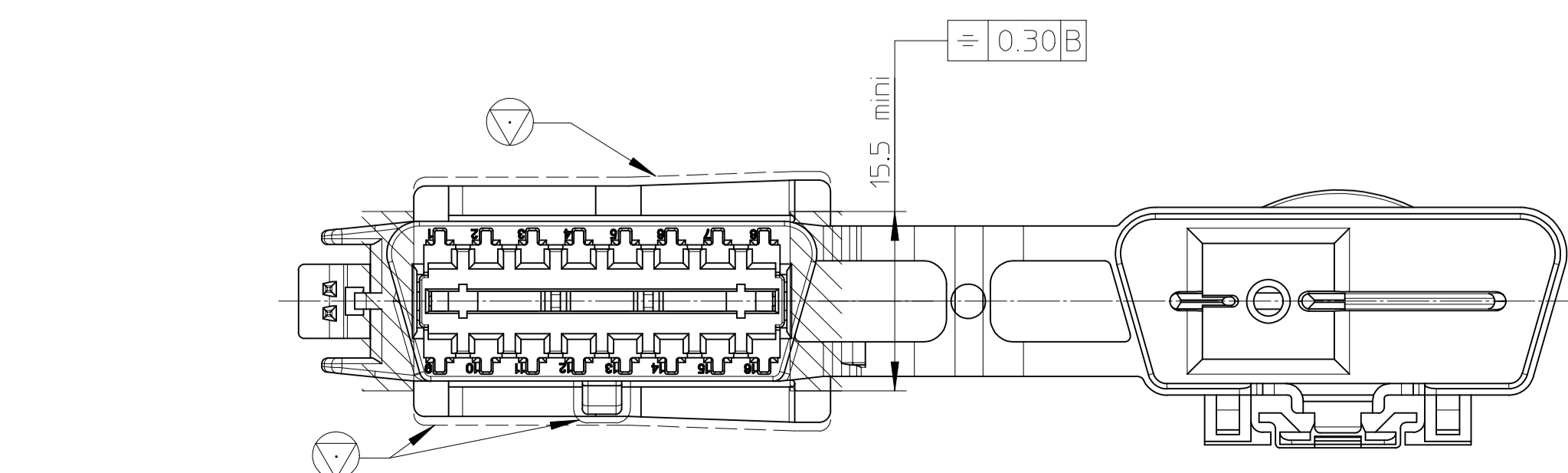
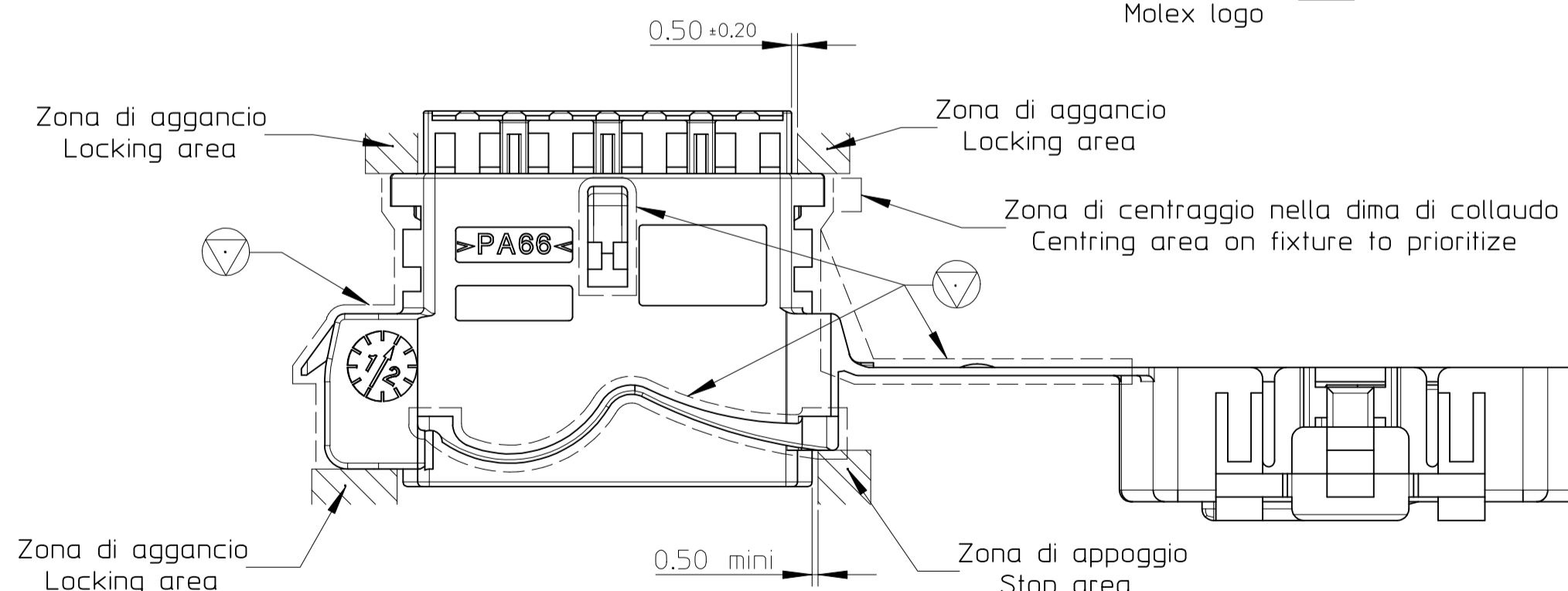
MODIFICATIONS

REV.	DESCRIPTIONS	NAME	DATE
OR	- From drawing ET970703T03 rev. OR of 10/09/97		
A	- Update design	PBO	98/10/22
B	- See sheet 3/3	PBO	98/12/04
C	- Update PC and TPA design.	PBO	01/07/04
D	- See sheets 1/3 and 3/3	PBO	01/09/11
E	- See sheet 1/3	PBO	01/11/20
F	- See sheets 1/3 and 3/3	PBO	02/05/13
G	- See sheets 1/3 and 3/3	FT	03/12/10
H	- Cavities position : POS/0.2/A was POS/0.1/A POS/0.4/B was POS/0.1/B	PBO	04/03/31
I	- Revise design of the latch - Change part number - Change drawing frame - See sheet 1/3	LP	06/07/11
J	- See sheet 1/3 and 3/3	LP	07/09/17
K	- See sheet 1/3	PGR	13/05/29
L	- See sheet 1/3 and 3/3	PBO	17/02/08
M	- See sheet 1/3	PBO	17/04/12

AGGANCIAMENTO SU DIMA DI COLLAUDO – MAINTENANCE ON FIXTURE

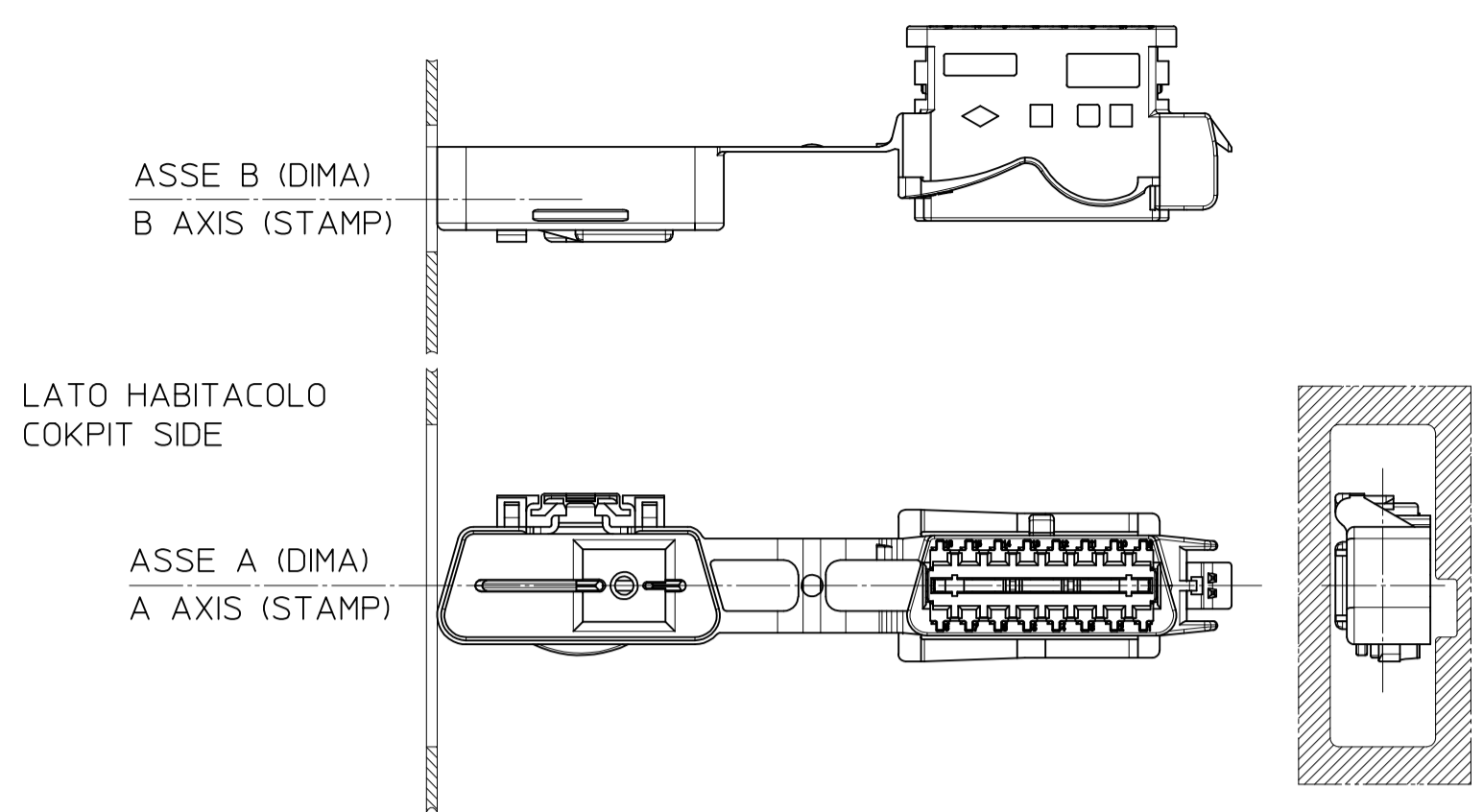


Initiate fornitore
Molex logo

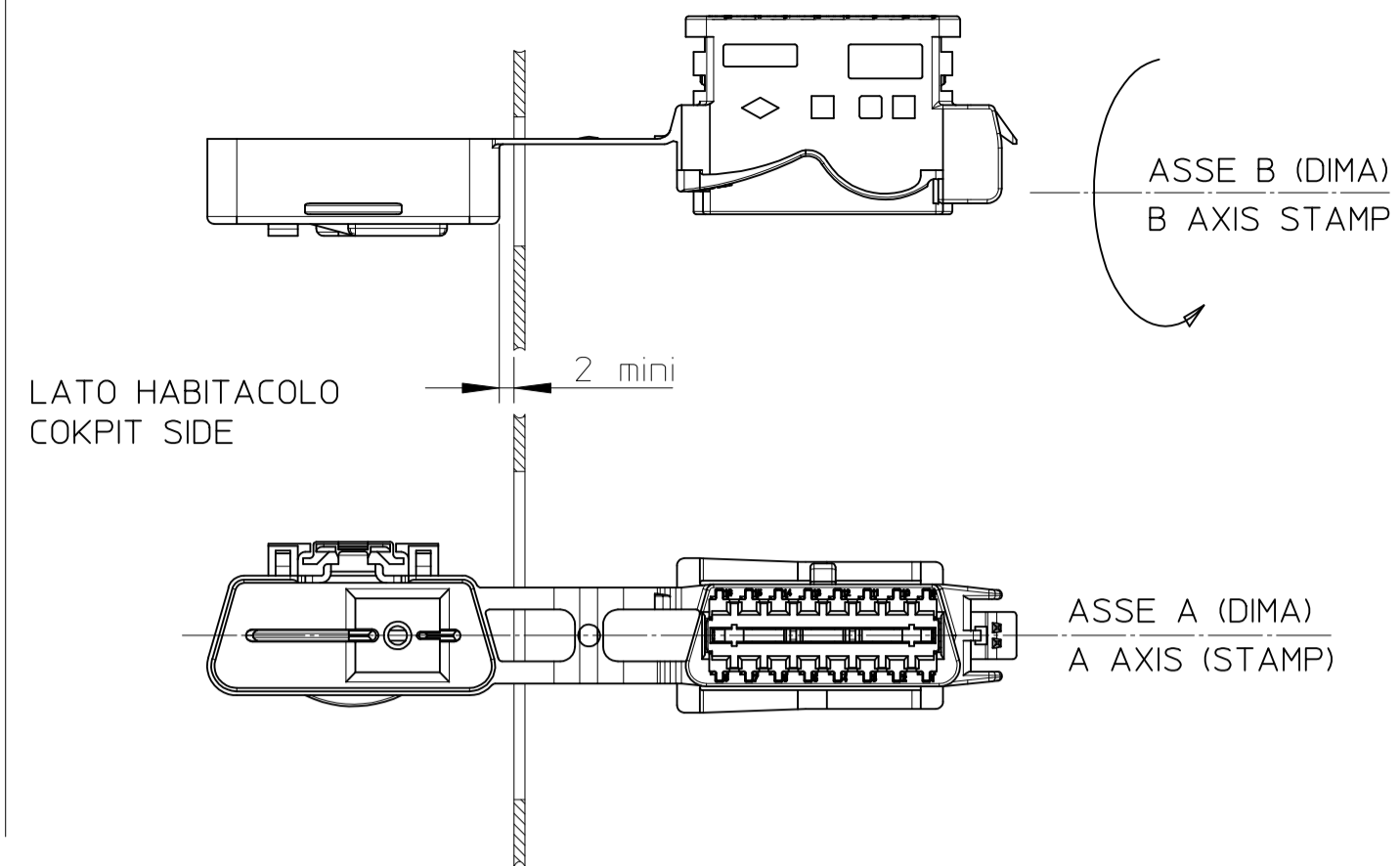


FISSAGGIO DEL CONNETTORE - MATE CONNECTOR

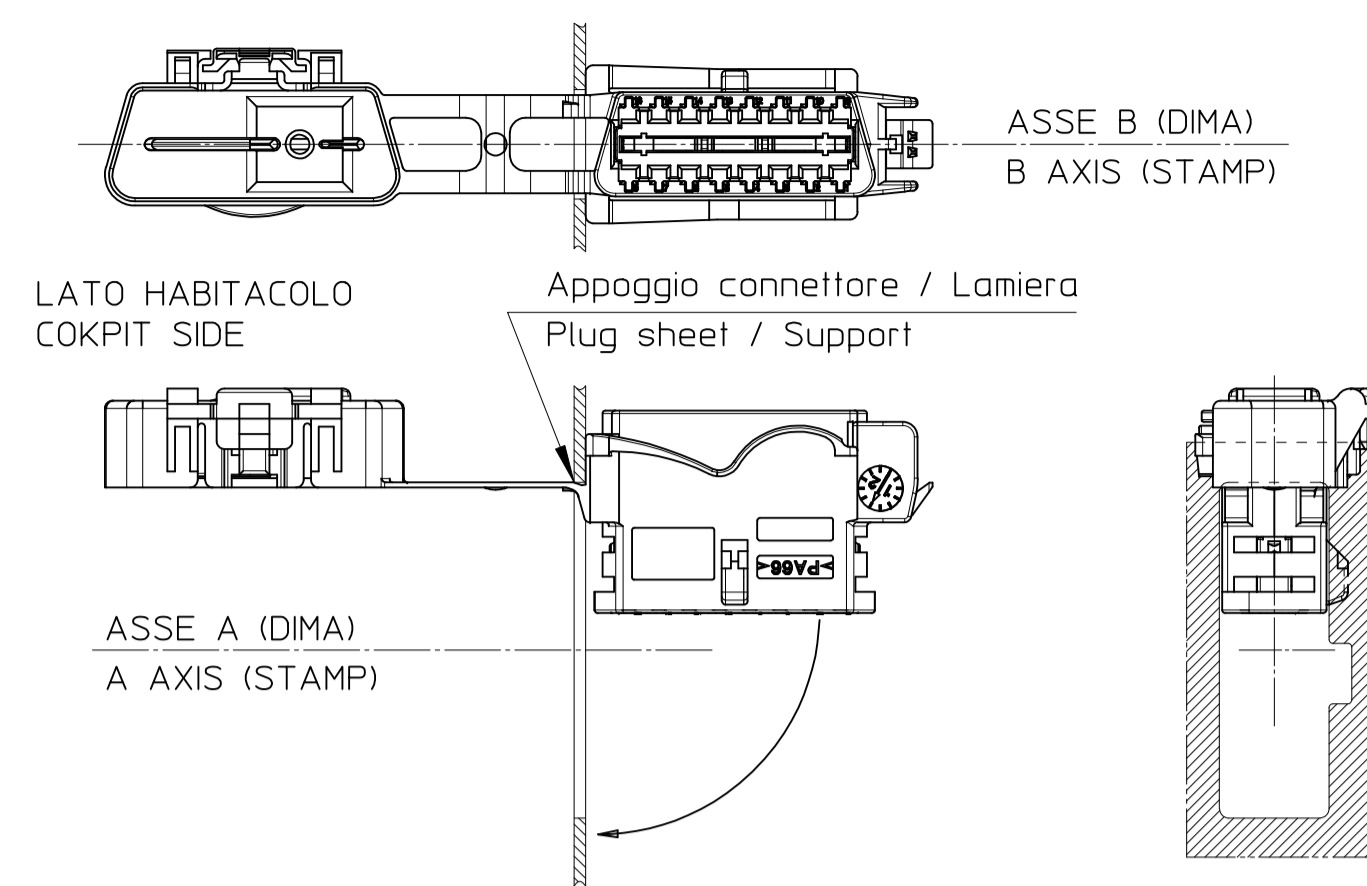
1 - INSERZIONE - INSERTION



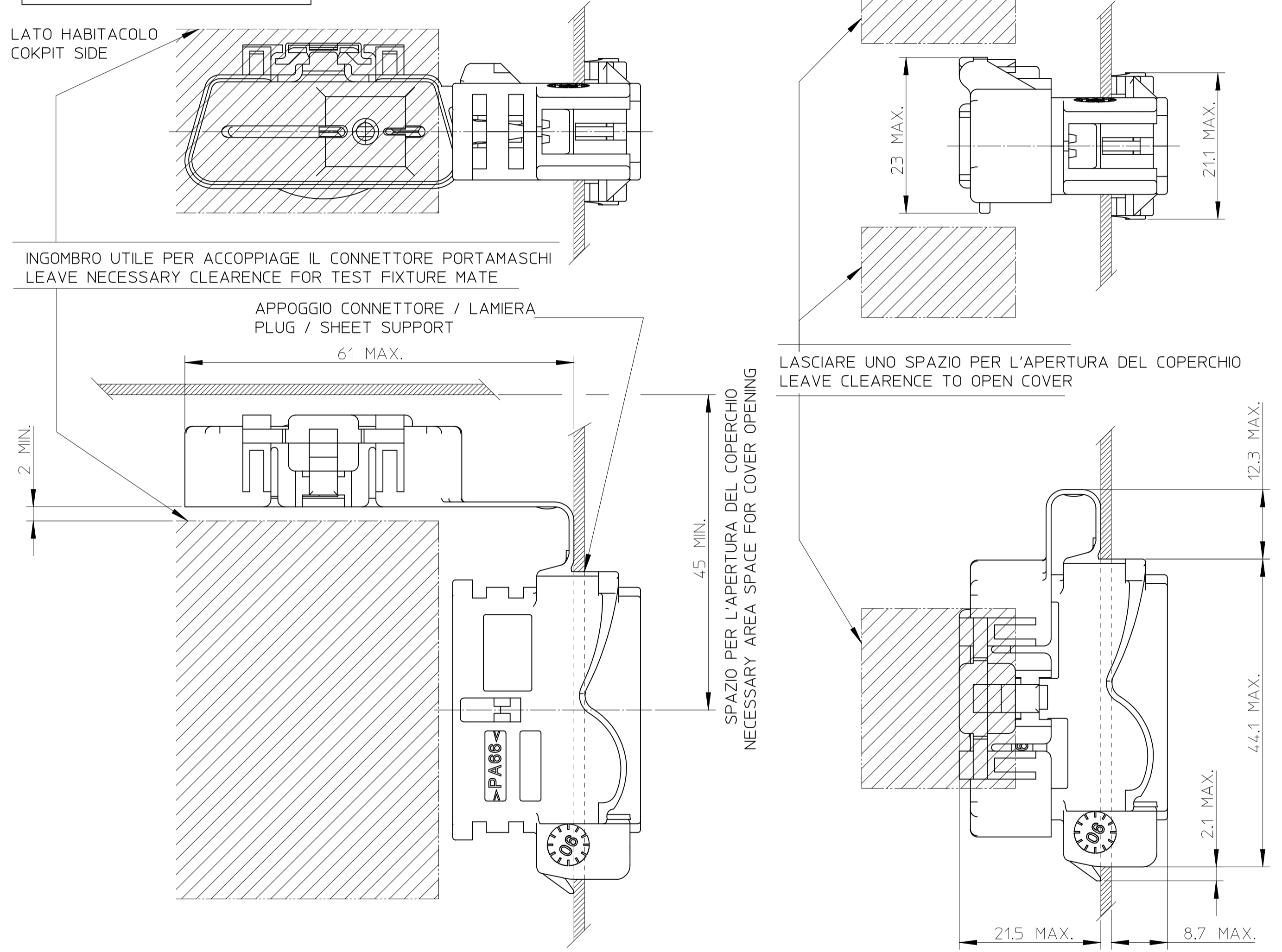
2 - 1° ROTAZIONE - 1° ROTATION



3 - 2° ROTAZIONE - 2° ROTATION

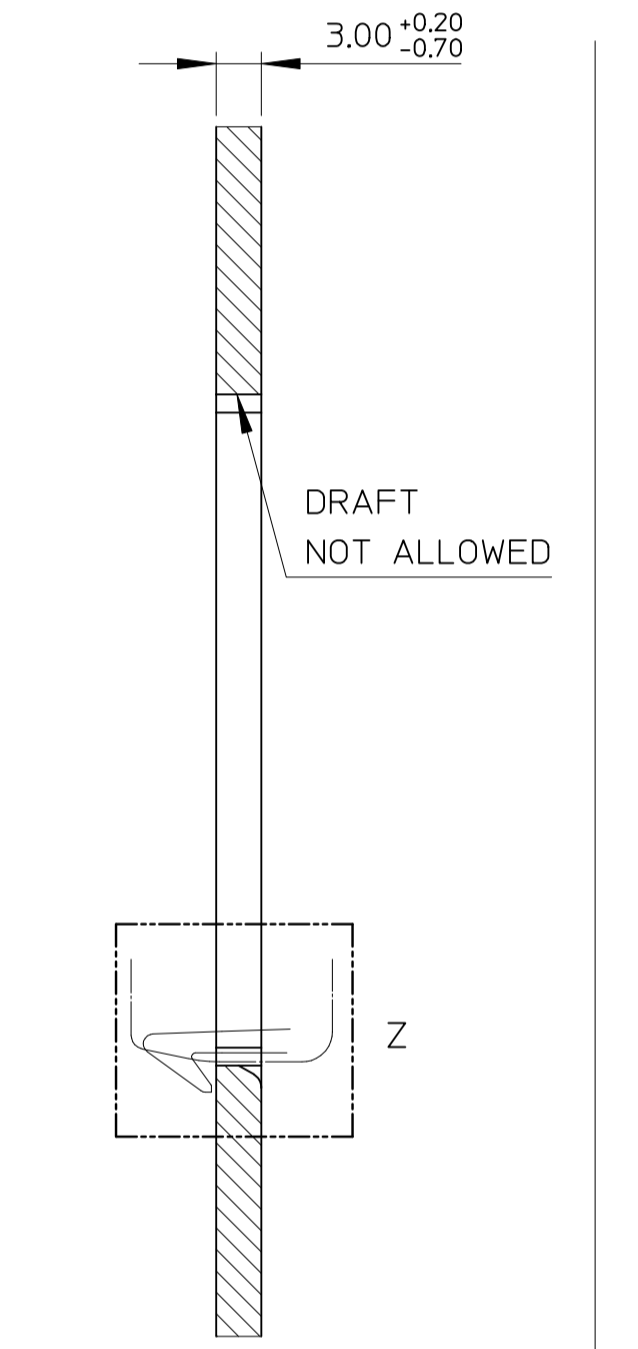


INGOMBRO - CLEARANCE



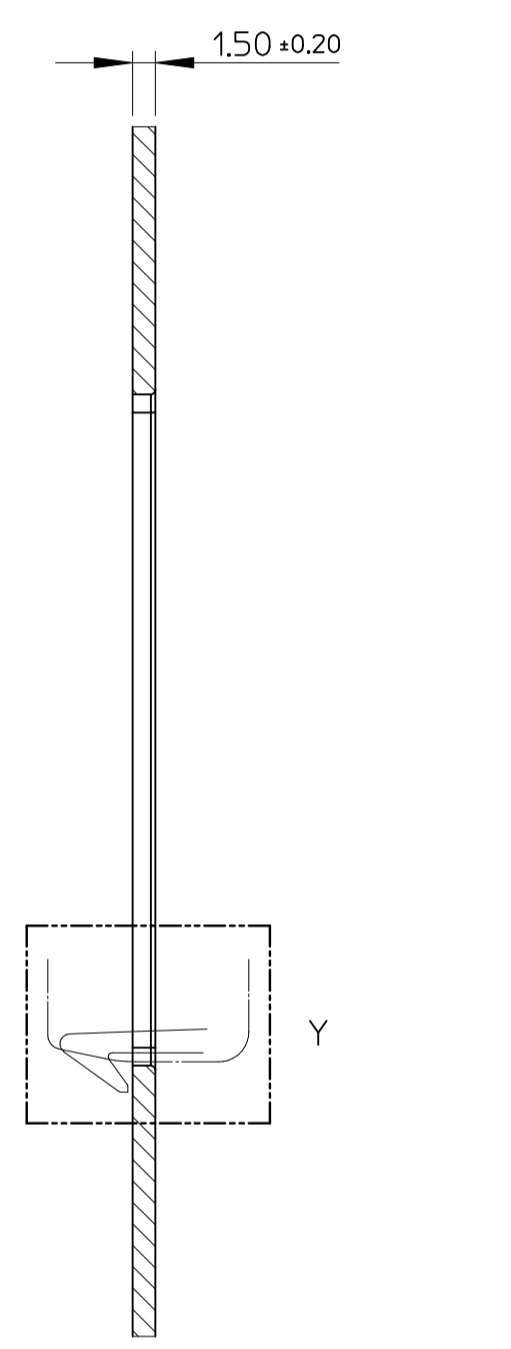
DETAIL A

RINFORZATO APPOGGIO DI PLASTICA REINFORCED PLASTIC SUPPORT (PA6.6-GF20, PA6.6-GF30, PBT-GF20, PBT-GF30)



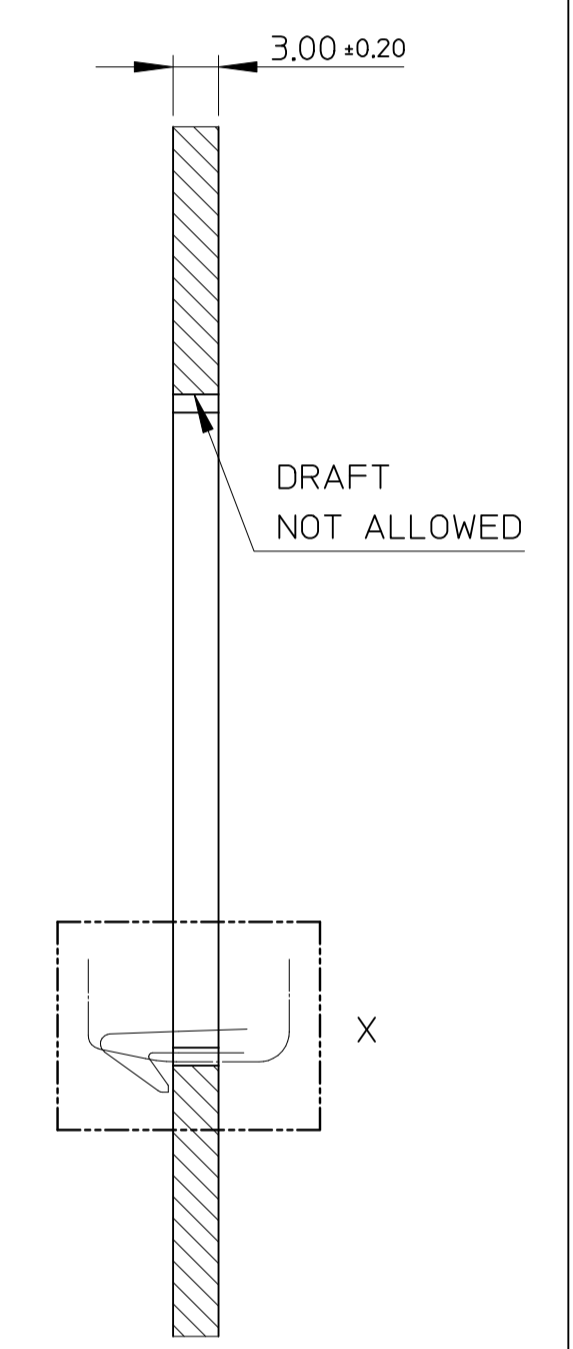
DETAIL B

APPOGGIO DI METALLO METAL SUPPORT (STEEL)



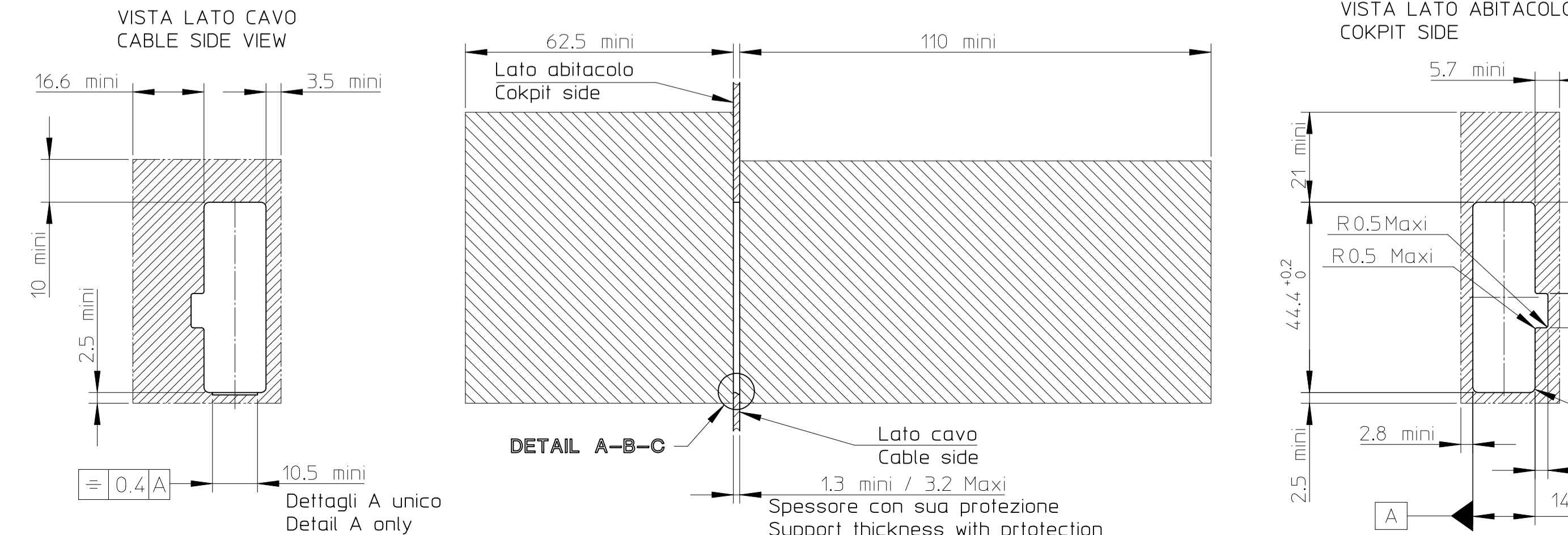
DETAIL C

APPOGGIO DI PLASTICA E MOLLE SOFT PLASTIC SUPPORT (P/E-T26)



DEFINIZIONE DI SOSTEGNO - SUPPORT DEFINITION

ZONA TRATTEGGIATA = SPAZIO NECESSARIO PER IL FISSAGGIO DEL CONNETTORE SU LAMIERA
HATCHED AREA = MINIMUM BULKINESS FOR BRING CONNECTOR



MODIFICATIONS

REV.	DESCRIPTIONS	NAME	DATE
OR	- From drawing ET970703T03 rev. OR of 10/09/97		
A	- Update design	PBO	98/10/22
B	- See sheet 3/3	PBO	98/12/04
C	- Update PC and TPA design - Sheet 3/3 was 1/3	PBO	01/07/04
D	- Removed connexions : 2120239CA201G 2120249CA201G - Added connexions NSCC	PBO	01/09/11
E	- See sheet 1/3	PBO	01/11/20
F	- Cutting support: added text "Aucune bavure..."	PBO	02/05/13
G	- See sheets 1/3 and 2/3. - Bulkiness: 21.5 Maxi was 20.6 Maxi. - Added dim. 45 mini - dim. 61 Maxi - dim. 2 mini. - Cutting support: added détail A - dim. 10,5 mini - and reference A	FT	03/12/10
H	- See sheets 1/3 et 2/3	PBO	04/03/31
I	- Revise design of the latch - Change part number Change drawing frame - See sheet 1/3	LP	06/07/11
J	- See sheet 1/3 : add 0989732011	LP	07/09/17
K	- See sheet 1/3	PGR	13/05/29
L	- Update support definition	PBO	17/02/08
M	- See sheet 1/3	PBO	17/04/12

- TERMINALI DA UTILIZZARE: CAPOCORDA FEMMINE NSCC DA 1.5 CODICI: 0988971109 0.22 à 0.44 mm² (old 2120809CA201H)
0988971119 0.49 à 0.94 mm² (old 2120819CA201H)
0988971129 0.95 à 1.87 mm² (old 2120849CA201H)
- QUESTO CONNETTORE PORTAMASCHI ACCOPPIA COL CONNETTORE PORTAMASCHI CODICI 0989732011 (49200EV10M1)
- FORZA DI RITENZIONE DEL CONNETTORE NELLA DIMA DI COLLAUDO: 320 à 350N CON PUSH TEST
50 à 350N SENZA PUSH REST
- SULLE ZONE INDICATE COLLA MARCA:
- * NON AGGANCIARE IL CONNETTORE
- * NON DANNEGGIARE IL CONNETTORE
- NON DANNEGGIARE IL COPERCHIO
- NON DANNEGGIARE IL SECONDARY LOCK
- CONNECT USED: TERMINAL NSCC 1.5 REF.: 0988971109 0.22 to 0.44 mm² (old 2120809CA201H)
0988971119 0.49 to 0.94 mm² (old 2120819CA201H)
0988971129 0.95 to 1.87 mm² (old 2120849CA201H)
- FEMALE CONNECTOR WITH THE FIXTURE DRAWING P/N 0989732011 (old 49200EV10M1)
- HOLDING FORCE ONTO CONNECTOR INTERFACE: 320 to 350N WITH PUSH TEST
50 to 350n WITHOUT PUSH TEST
- WITH THE AREA IDENTIFIED BY:
- DO NOT LOCK THE FIXTURE
- DO NOT DAMAGE THE PART
- DO NOT DAMAGE ALL COVERS FORMS
- DO NOT DAMAGE ALL TPA FORMS

REVISED	EC NO: G2017-0093	DRWN: PBO/QUAIN 2017/04/12	CHKD: FPE/TPIERRE 2017/04/18	APPR: OPLESSIS 2017/05/03	DESCRIPTION	QUALITY SYMBOLS		GENERAL TOLERANCES (UNLESS SPECIFIED)		DIMENSION STYLE		SCALE	DESIGN UNITS	FIRST ANGLE PROJECTION
						mm	INCH	MM ONLY	1:1	METRIC				
							0	4 PLACES	± ---	± ---	DRAWN BY	DATE	TITLE	
							0	3 PLACES	± ---	± ---	PGRANDCL	2013/05/21	16W OBD2 W/ CAP ASSY	
							0	2 PLACES	± 0.20	± ---	CHECKED BY	DATE	16W OBD2 W/O CAP ASSY	
							0	1 PLACE	± 0.20	± ---	JDUCLIOS	2013/05/21		
							0	0 PLACE	± 0.20	± ---	APPROVED BY	DATE		
											OPLESSIS	2017/05/03		
											MATERIAL NO.	DOCUMENT NO.		
											SEE SHEET 1	RSD-98977-004		
											THIS DRAWING CONTAINS INFORMATION THAT IS PROPRIETARY TO MOLEX INCORPORATED AND SHOULD NOT BE USED WITHOUT WRITTEN PERMISSION			