



REVISIONS			
REV	DESCRIPTION, ECN, EAR NO.	DATE	APP'D
P	PRODUCT DWG. - REV. PER EAR 15100	MAY18/22	S.M.
R	PRODUCT DWG. - REV. PER EAR 15058	JUL22/22	S.M.
S	PRODUCT DWG. - REV. PER EAR 15058	AUG10/22	S.M.

**PART NUMBER:** FLH - SX1 - XX - X

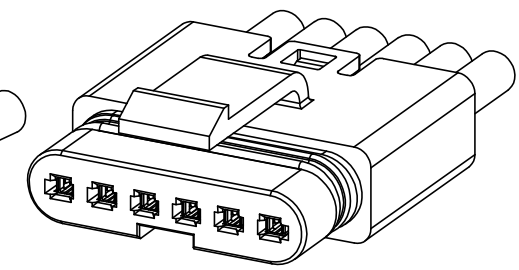
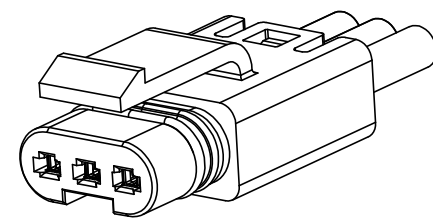
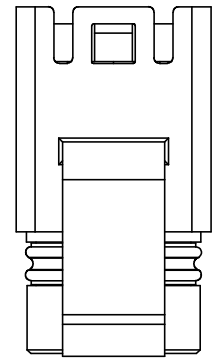
**SERIES**  
FLH

**SOCKET HOUSING TYPE**  
S1 = 1 CONTACT  
S2 = 2 CONTACTS  
S3 = 3 CONTACTS  
S4 = 4 CONTACTS  
S5 = 5 CONTACTS  
S6 = 6 CONTACTS

**IDENTIFIER**  
XX = 00 FOR STANDARD  
= 01-99 FOR OTHER OPTIONS

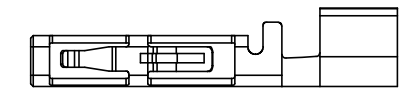
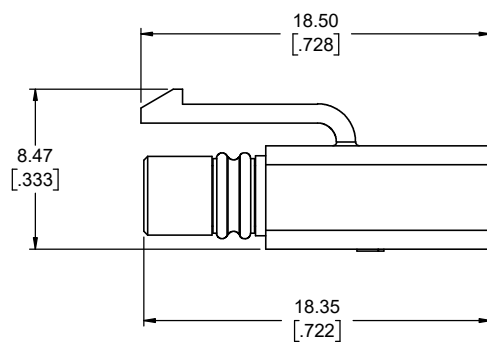
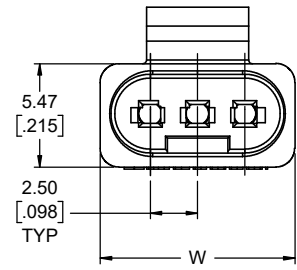
**OTHER FEATURES**  
LEAVE BLANK FOR STANDARD  
0 TO 9 FOR OTHER OPTIONS

SOCKET HOUSING	W (mm)
S1	
S2	10.30
S3	
S4	
S5	17.80
S6	



**APPLICATION VIEW WITH 3 CONTACTS AND WIRES INSTALLED**

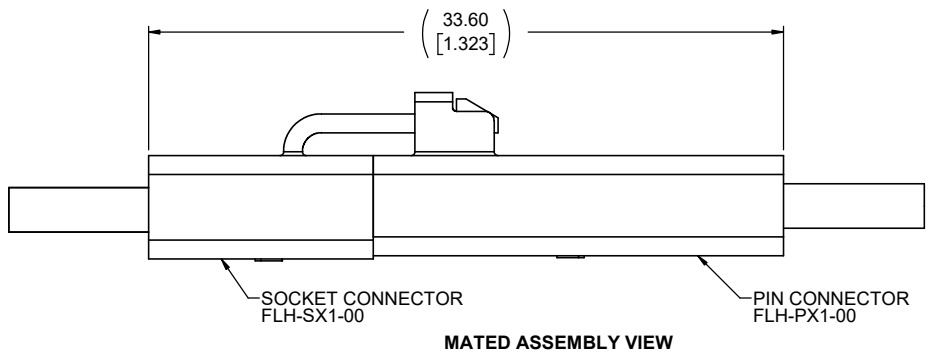
**APPLICATION VIEW WITH 6 CONTACTS AND WIRES INSTALLED**



**FLH-SC136-XXX - SOCKET CONTACT  
SEE NOTES 3 & 4  
SCALE 10:1**

**NOTES:**

- MATERIALS: ALL MATERIALS ARE RoHS COMPLIANT PER EU DIRECTIVE 2011/65/EU & AMENDMENTS
  - HOUSING: ENGINEERING THERMOPLASTIC, UL FLAMMABILITY RATING 94V-0, COLOUR BLACK
  - SEALS: SILICONE RUBBER, UL FLAMMABILITY RATING 94V-0.
- ELECTRICAL CHARACTERISTICS
  - CURRENT RATING : 7A (18 AWG OR 1 mm<sup>2</sup>) OR 5A (20 AWG OR 0.5 mm<sup>2</sup>) OR 3A (22 AWG OR 0.34 mm<sup>2</sup>) PER CONTACT
  - DIELECTRIC WITHSTANDING VOLTAGE: 1500 VAC
  - INSULATION RESISTANCE: 500 MEGAOHMS
  - OPERATING TEMPERATURE: -40 °C TO +105 °C
- CRIMP STRANDED WIRE TO CONTACT BEFORE ASSEMBLING INTO HOUSING.
- ENVIRONMENTAL PROTECTION: IP67 PER IEC 60529 IN MATED CONDITION
- SOCKET CONTACTS TO BE PURCHASED SEPARATELY ON REEL. P/N: FLH-SC136-XXX



**MATED ASSEMBLY VIEW**

UNLESS SPECIFIED OTHERWISE	DRAWN	B.COPPING	FEB20/18
PRIMARY UNITS MILLIMETERS	CHECKED	S.MUGAN	FEB20/18
SECONDARY UNITS INCHES	M.E. APP'D		
REFERENCE IN PARENTHESES	Q.A. APP'D		
GENERAL TOLERANCES	DWG APPR.		
1 DECIMAL PLACE	ENG. REL. NO.		
2 DECIMAL PLACES ±0.10	REF.		
3 DECIMAL PLACES	THIRD ANGLE PROJECTION		
ANGULAR DEGREES	DO NOT SCALE DRAWING		

**Amphenol Canada Corp.**  
Commercial Products

**FLH SERIES, MINI SEALED 2.5mm PITCH  
PLUG HOUSING ASSEMBLY, 1 TO 6  
CONTACT OPTIONS,  
RoHS COMPLIANT**

DWG. NO. **P-FLH-SX1-XX-X** REV **S**

CODE ID NO. 03554 DWG SIZE: X SCALE: 5:1 SHEET 1 OF 1