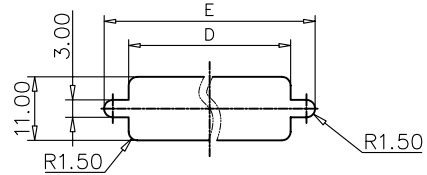
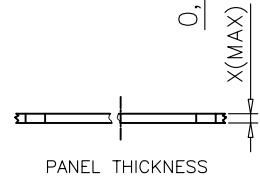
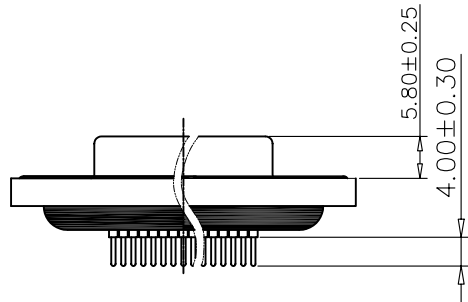
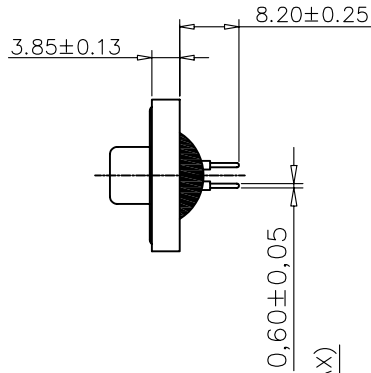
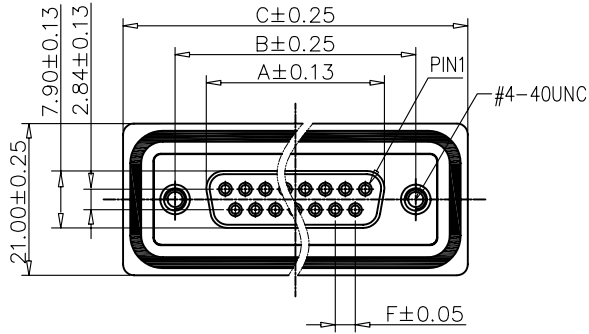
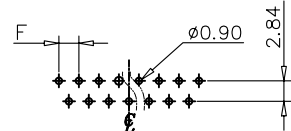


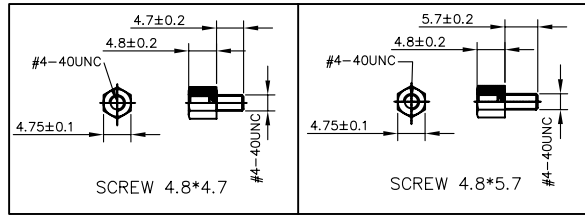
This document is the property of Amphenol Corporation and is delivered on the express condition that it is not to be disclosed, reproduced or used, in whole or in part, for manufacture or sale by anyone other than Amphenol Corporation without its prior consent, & that no right is granted to disclose or to use any information in this document.



RECOMMENDED PANEL CUT-OUT



RECOMMENDED P.C.B LAYOUT
GENERAL TOLERANCE:±0.05mm



Customer drawing

POSITION	A	B	C	D	E	F(PITCH)
9	16.24	24.99	39.40	20.00	28.20	2.74
15	24.60	33.32	47.70	28.00	36.50	2.74
25	38.38	47.04	64.50	41.50	51.00	2.77
37	54.76	63.50	80.78	57.80	67.30	2.77

REVISIONS				
SYM	ECN	DESCRIPTION	DATE	APPROVED
1		New release	06/22/10	IP

D-SUB TECHNICAL DATA

SHELL : Steel, 1.25um(50u") min nickel
 BODY : Glass filled thermoplastic.
 flame retardant to UL94 V-0 color Black
 PLATE : Glass filled thermoplastic.
 flame retardant to UL94 V-0 color Black
 CONTACTS : Brass,gold over 50u" min nickel.(According to the P/N)
 SCREWLOCK : Brass, 50u" min nickel
 REAR INSERT : Brass, 50u" min nickel
 O RING : Silicone Color: Blue
 EPOXY: Color: Black
 ELECTRICAL : Voltage rating : 300 V RMS at 50 Hz
 Current rating : 5A
 Insulation resistance >5000 M Ohms
 Contact resistance 20mOhms max.
 MARKING : Amphenol logo
 Manufacturing date(YYWW)



NOTE : Screw L=4.7 For Panel Thickness
 Under X=1.2mm
 Screw L=5.7 For Panel Thickness
 Between X=1.2~2.0mm

PRODUCT CODE

L 17ED XX S 1 X

L: RoHS Compliance

17ED:
standard density series

Number of contacts
Standard density:
09, 15, 25, 37

Contact plating:
0: gold flash
1: 0.38um(15u")
2: 0.76um(30u")

Termination:
1: Straight PCB
without stand-off
or boardlocks

Contact type
S: Socket

UNLESS OTHERWISE SPECIFIED TOLERANCES	APPROVAL		DATE
	U.S.	METRIC	
.X +/-	0.50		DRAWN Lamon Ho 06/22/10
.XX +/-	0.30		CHECKED Luk Wang 06/22/10
.XXX +/-	0.20		CHECKED
FRACTIONS +/-		2'	
ANGLES +/-			
FOR MATERIALS AND FINISHES SEE NOTES	DRAWING FILE :		
REMOVE SHARP EDGES	ANGLE OF PROJECTION		
DIMENSIONS			
U.S. INCHES			
METRIC MM			

Amphenol

Amphenol East Asia Limited

TITLE
D-sub Waterproof, ED series female Straight PCB without stand-off or boardlocks type

SIZE	DRAWING NO.	REV.
A4	C L17EDXXS1X	1
SCALE	NONE	SHEET 1 OF 1