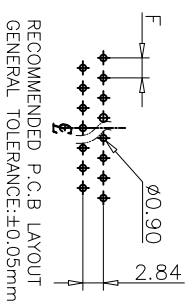
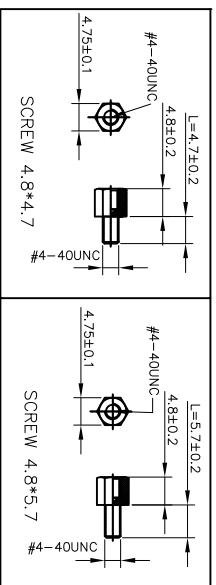
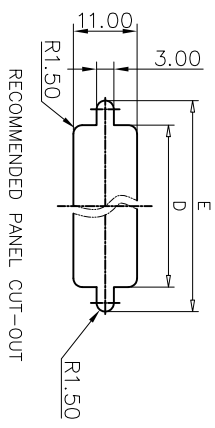
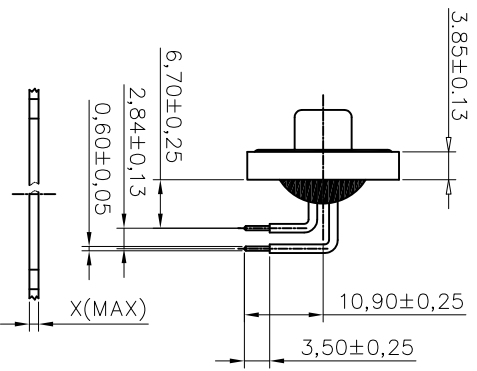
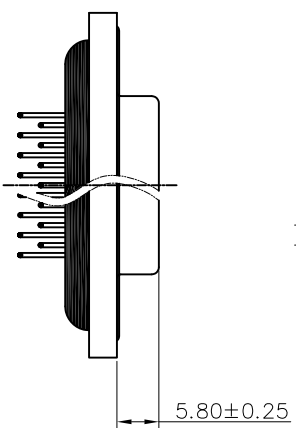
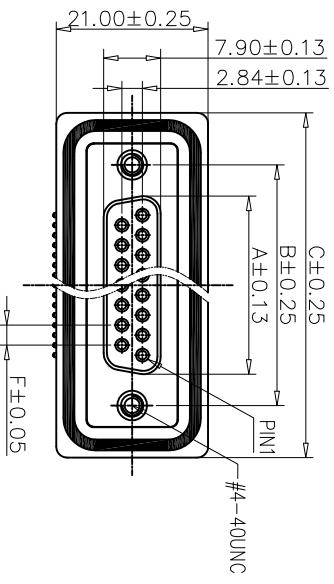


This document is the property of Amphenol Corporation and is addressed on the express condition that it is not to be disclosed, reproduced or used, in whole or in part, for any purpose other than that intended by Amphenol Corporation without its prior consent, and that no right is granted to disclose or to use any information in this document.



Customer drawing for proposal

POSITION	A	B	C	D	E	F(PITCH)
9	16.24	24.99	39.40	20.00	28.20	2.77
15	24.60	33.32	47.70	28.00	36.50	2.77
25	38.38	47.04	64.50	41.50	51.00	2.77
37	54.76	63.50	80.78	57.80	67.30	2.77

REVISONS			DATE	APPROVED
SNL	ECN	DESCRIPTION		
1		New release	06/22/10	IP
2		Modify F dimension	Apr/19/12	IP

D-SUB TECHNICAL DATA

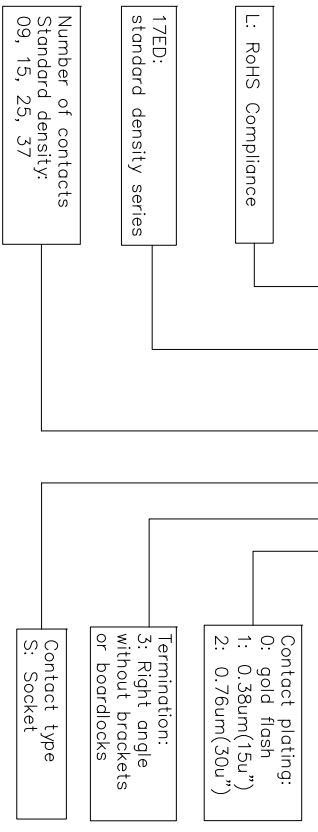
SHELL : Steel, 1.25um(50u") min nickel
BODY : Glass filled thermoplastic.
 flame retardant to UL94 V-0 color Black
PLATE : Glass filled thermoplastic.
 flame retardant to UL94 V-0 color Black
CONTACTS : Brass,gold over 50u" min nickel.(According to the P/N)
SCREWLOCK : Brass, 50u" min nickel
REAR INSERT: Brass, 50u" min nickel
O RING : Silicone Color: Blue
EPOXY: Color: Black
ELECTRICAL : Voltage rating : 300 V RMS at 50 Hz
 Current rating : 5A
 Insulation resistance >5000 M Ohms
 Contact resistance 20mOhms max.
MARKING : Amphenol logo
 Manufacturing date(YYWW)



NOTE: Screw L=4.7 For Panel Thickness Under X=1.2mm
 Screw L=5.7 For Panel Thickness Between X=1.2~2.0mm

PRODUCT CODE

L 17ED XX S 3X



DIMENSIONAL SPECIFICATIONS		APPROVAL	DATE
TOLERANCES	U.S.	DRM/N	Moxy/mo
X	±/±		Apr/19/12
XX	±/±	CHECKED	Forxy/Asng
XXX	±/±	CHECKED	Apr/19/12
ANGLES	±/±		
FINISHES	±/±		

DRAWING FILE :		ANGLE OF PROJECTION	SIZE	SCALE	SHEET
FOR MATERIALS AND FINISHES	REMOVE SHARP EDGES	THIRD ANGLE	A4	C	1 OF 1
TITLE		D-sub Waterproof ED series female Right angle without brackets or boardlocks type		SCALE	NONE
Amphenol		Amphenol East Asia Limited		REV.	2
L17EDXXS3X		L17EDXXS3X		SHEET 1 OF 1	