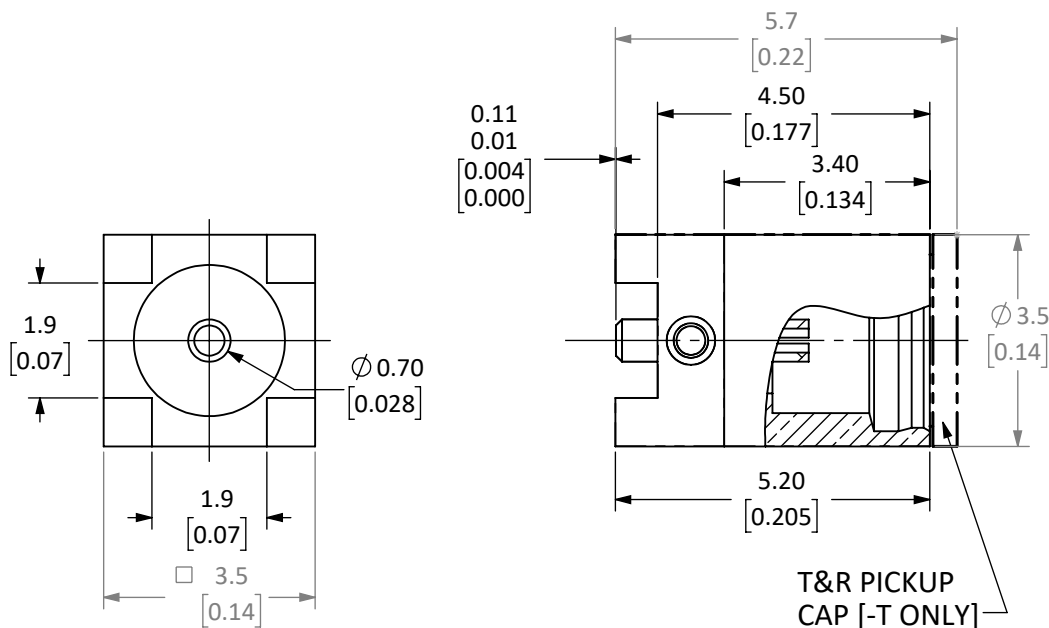


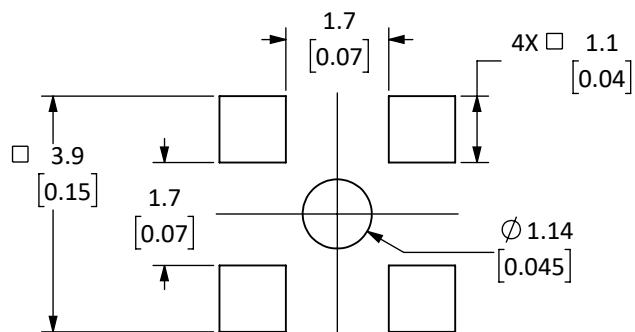
CONMMCX001-SMD	CONMMCX001-T	Connector Part	Material	Finish
X	X	Bodies	Body: Brass	Gold
X	X	Center Contact	Pin: Be Cu	Gold
X	X	Insulator	PTFE	-
-	X	Pickup Cap	PTFE	-

REVISIONS			
REV	DESCRIPTION	DATE	APPV
B	UPDATED FOOTPRINT/DIMENSIONS. NEW TITLE BLOCK.	11-JUL-12	SAH
C	UPDATED SHEET SIZE/DIMENSIONS. ADDED DETAIL VIEW.	3-JUL-18	CLL
D	ADDED TAPE AND REEL SPECIFICATIONS	4-MAR-20	CLL
E	UPDATED TO ADD SHT 2 AND SPECIFICATION DETAILS	MSCHULTY 4/4/20	CLL
F	CONSOLIDATED SPECIFICATIONS TO SHT 1, ADDED TAPE AND REEL SNAP-ON PICKUP CAP, INSERTION LOSS, AND LABELING SPECIFICATIONS. TAB FOR -T APPLICATIONS.	JHAGER 10/11/2021	



NOTES: (UNLESS OTHERWISE SPECIFIED)

- ALL DIMENSIONS ARE IN MILLIMETERS [INCH]
- DIMENSIONS APPLY AFTER FINISHING
- MANUFACTURE TO BE COMPLIANT WITH EU RoHS DIRECTIVE, USE MATERIALS THAT DO NOT CONTAIN REACH SUBSTANCES OF VERY HIGH CONCERN >1000ppm, AND USE DRC CONFLICT-FREE SOURCED MATERIALS.
- IMPEDANCE: 50Ω
- FREQUENCY: DC-6GHz
- OPERATING TEMP: -65° - +165°C
- DURABILITY: 500 CYCLES MIN
- ENVIRONMENTAL TESTING IAW MIL-STD-202 [101,107,204,213]
- INTERFACE MMCX STYLE IAW BS EN 122340. 500 CYCLES MIN.
- INSERTION LOSS: NTE .075xvf(GHz)
- VSWR: NTE 1.25
- PACKAGEING TAPE AND REEL IAW ASTM EIA-481-B. [-T only]
 - PITCH: 8mm
 - TAPE SIZE: 12mm
 - EMBOSSED CARRIER



RECOMMENDED FOOTPRINT

WARNING: THIS DRAWING CONTAINS PROPRIETARY INFORMATION THAT IS THE SOLE PROPERTY OF LINX TECHNOLOGIES, AND SHALL BE TREATED AS SUCH. NO DISCLOSURE OR REPRODUCTION OF THIS DOCUMENT IS PERMITTED, IN WHOLE OR IN PART, WITHOUT THE EXPRESS WRITTEN PERMISSION OF LINX TECHNOLOGIES OR ITS DESIGNATED AGENTS.

MATERIAL:	INTERPRET DIMENSIONS AND TOLERANCES PER ASME Y14.5.	PROJECTION:
BRASS, BeCu	.X ±2.0	ANGLES: ±1°
PTFE	.XX ±1.00	SURFACE: √
	.XXX ±.500	
FINISH:	DRAWN: M. SCHULTE	DT: 26-FEB-20
GOLD	ENGR: S. HOGAN	DT: 3-MAR-20
NATURAL		



159 ORT LANE
MERLIN, OR 97532

TITLE:		
MMCX FEMALE SURFACE MOUNT		
SIZE	DWG. NO.	REV
A	C-CONMMCX001-SMD-X	F
SCALE: 8:1	DO NOT SCALE DRAWING	SHEET 1 OF 1