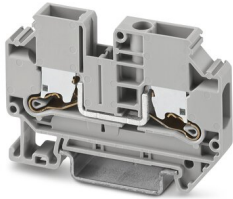


XTV 6 - Feed-through terminal block

1329493

<https://www.phoenixcontact.com/in/products/1329493>

Please be informed that the data shown in this PDF document is generated from our Online Catalog. Please find the complete data in the user documentation. Our General Terms of Use for Downloads are valid.



Feed-through terminal block, nom. voltage: 1000 V, nominal current: 41 A, number of connections: 2, number of positions: 1, connection method: Push-X-connection, Rated cross section: 6 mm², cross section: 0.5 mm² - 10 mm², mounting type: NS 35/7,5, NS 35/15, color: gray

Your advantages

- Fast, powerless conductor connection for all conductor types with the pretensioned contact spring
- A high level of flexibility when inserting conductors enables conductors with or without ferrules to be connected easily
- Clear conductor connection with the lateral connection direction and the clear pusher position
- Easy procurement of information – the QR code on the terminal block provides all important information about the product
- Terminal blocks with Push-X connection are part of the COMPLETE line system

Commercial Data

Item number	1329493
Packing unit	50 pc
Minimum order quantity	50 pc
Sales Key	BE2
Product Key	BE2511
GTIN	4063151622497
Weight per Piece (including packing)	17.2 g
Weight per Piece (excluding packing)	17.2 g
Customs tariff number	85369010
Country of origin	CN

XTV 6 - Feed-through terminal block



1329493

<https://www.phoenixcontact.com/in/products/1329493>

Technical Data

Product properties

Product type	Feed-through terminal block
Number of positions	1
Area of application	Railway industry
	Machine building
	Plant engineering
Number of connections	2
Number of rows	1

Insulation characteristics

Overvoltage category	III
Degree of pollution	3

Electrical properties

Rated surge voltage	8 kV
Maximum power dissipation for nominal condition	1.31 W

Connection data

Number of connections per level	2
Nominal cross section	6 mm ²
Stripping length	10 mm ... 12 mm
Internal cylindrical gage	A5
	B4
Connection in acc. with standard	IEC 60947-7-1
Conductor cross section rigid	0.5 mm ² ... 10 mm ²
Cross section AWG	20 ... 8 (converted acc. to IEC)
Conductor cross section flexible	1.5 mm ² ... 10 mm ²
Conductor cross section, flexible [AWG]	14 ... 8 (converted acc. to IEC)
Conductor cross-section flexible (ferrule without plastic sleeve)	1.5 mm ² ... 6 mm ²
Flexible conductor cross section (ferrule with plastic sleeve)	1.5 mm ² ... 6 mm ²
2 conductors with the same cross section, flexible, with TWIN ferrule with plastic sleeve	1.5 mm ² ... 4 mm ²
Nominal current	41 A
Maximum load current	52 A (With 10 mm ² conductor cross-section, rigid)
Nominal voltage	1000 V
Nominal cross section	6 mm ²

Dimensions

Width	8.2 mm
End cover width	2.2 mm
Height	62.8 mm
Height NS 35/15	51.2 mm

XTV 6 - Feed-through terminal block



1329493

<https://www.phoenixcontact.com/in/products/1329493>

Height NS 35/7,5	43.7 mm
Depth	42.2 mm
Length	62.8 mm

Material specifications

Color	gray
Flammability rating according to UL 94	V0
Insulating material group	I
Insulating material	PA
Static insulating material application in cold	-60 °C
Relative insulation material temperature index (Elec., UL 746 B)	130 °C
Fire protection for rail vehicles (DIN EN 45545-2) R22	HL 1 - HL 3
Fire protection for rail vehicles (DIN EN 45545-2) R23	HL 1 - HL 3
Fire protection for rail vehicles (DIN EN 45545-2) R24	HL 1 - HL 3
Fire protection for rail vehicles (DIN EN 45545-2) R26	HL 1 - HL 3
Surface flammability NFPA 130 (ASTM E 162)	passed
Specific optical density of smoke NFPA 130 (ASTM E 662)	passed
Smoke gas toxicity NFPA 130 (SMP 800C)	passed

Electrical tests

Surge voltage test

Result	Test passed
--------	-------------

Temperature-rise test

Requirement temperature-rise test	Increase in temperature ≤ 45 K
Result	Test passed
Short-time withstand current 6 mm ²	0.72 kA
Result	Test passed

Power-frequency withstand voltage

Test voltage setpoint	2.2 kV
Result	Test passed

Mechanical properties

Mechanical data

Open side panel	Yes
-----------------	-----

Mechanical tests

Mechanical strength

Result	Test passed
--------	-------------

Attachment on the carrier

Result	Test passed
--------	-------------

Test for conductor damage and slackening

XTV 6 - Feed-through terminal block



1329493

<https://www.phoenixcontact.com/in/products/1329493>

Rotation speed	9 rpm
Revolutions	135
Conductor cross section/weight	0.5 mm ² / 0.3 kg
	6 mm ² / 1.4 kg
	10 mm ² / 2 kg
Result	Test passed

Environmental and real-life conditions

Aging

Temperature cycles	192
	192
Result	Test passed
	Test passed

Needle-flame test

Time of exposure	30 s
Result	Test passed

Oscillation/broadband noise

Specification	DIN EN 50155 (VDE 0115-200):2022-06
Spectrum	Service life test category 2, bogie-mounted
Frequency	$f_1 = 5 \text{ Hz}$ to $f_2 = 250 \text{ Hz}$
ASD level	6.12 (m/s ²) ² /Hz
Acceleration	3.12g
Test duration per axis	5 h
Test directions	X-, Y- and Z-axis
Result	Test passed

Shocks

Specification	DIN EN 50155 (VDE 0115-200):2022-06
Pulse shape	Half-sine
Acceleration	30g
Shock duration	18 ms
Number of shocks per direction	3
Test directions	X-, Y- and Z-axis (pos. and neg.)
Result	Test passed

Ambient conditions

Ambient temperature (operation)	-60 °C ... 105 °C (max. short-term operating temperature RTI Elec.)
Ambient temperature (storage/transport)	-25 °C ... 60 °C (for a short time, not exceeding 24 h, -60 °C to +70 °C)
Ambient temperature (assembly)	-5 °C ... 70 °C
Ambient temperature (actuation)	-5 °C ... 70 °C
Permissible humidity (storage/transport)	30 % ... 70 %

XTV 6 - Feed-through terminal block



1329493

<https://www.phoenixcontact.com/in/products/1329493>

Standards and regulations

Connection in acc. with standard	IEC 60947-7-1
----------------------------------	---------------

Mounting

Mounting type	NS 35/7,5
	NS 35/15

XTV 6 - Feed-through terminal block

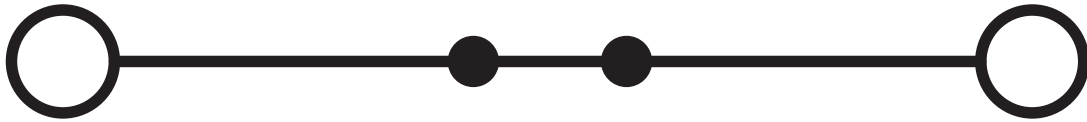
1329493

<https://www.phoenixcontact.com/in/products/1329493>



Drawings

Circuit diagram



XTV 6 - Feed-through terminal block




1329493


<https://www.phoenixcontact.com/in/products/1329493>

Approvals

To download certificates, visit the product detail page: <https://www.phoenixcontact.com/in/products/1329493>

 CSA Approval ID: 13631				
	Nominal Voltage U_N	Nominal Current I_N	Cross Section AWG	Cross Section mm^2
Use group B	600 V	40 A	14 - 8	-
Use group C	600 V	40 A	14 - 8	-

 cULus Recognized Approval ID: E60425				
--	--	--	--	--

 cULus Recognized Approval ID: E60425				
--	--	--	--	--

XTV 6 - Feed-through terminal block



1329493

<https://www.phoenixcontact.com/in/products/1329493>

Classifications

ECLASS

ECLASS-11.0	27141120
ECLASS-13.0	27250101

ETIM

ETIM 8.0	EC000897
----------	----------

UNSPSC

UNSPSC 21.0	39121400
-------------	----------

XTV 6 - Feed-through terminal block

1329493

<https://www.phoenixcontact.com/in/products/1329493>

Accessories

 Note: Applying some accessories below might limit this product.


FBS 2-8 - Plug-in bridge

3030284

<https://www.phoenixcontact.com/in/products/3030284>



Plug-in bridge, pitch: 8.2 mm, number of positions: 2, color: red

 Max. current carrying capacity: 41 A

FBS 3-8 - Plug-in bridge

3030297

<https://www.phoenixcontact.com/in/products/3030297>



Plug-in bridge, pitch: 8.2 mm, number of positions: 3, color: red

 Max. current carrying capacity: 41 A

XTV 6 - Feed-through terminal block

1329493

<https://www.phoenixcontact.com/in/products/1329493>




FBS 4-8 - Plug-in bridge

3030307

<https://www.phoenixcontact.com/in/products/3030307>

Plug-in bridge, pitch: 8.2 mm, number of positions: 4, color: red



 Max. current carrying capacity: 41 A

FBS 5-8 - Plug-in bridge

3030310

<https://www.phoenixcontact.com/in/products/3030310>

Plug-in bridge, pitch: 8.2 mm, number of positions: 5, color: red



 Max. current carrying capacity: 41 A

XTV 6 - Feed-through terminal block

1329493

<https://www.phoenixcontact.com/in/products/1329493>




FBS 6-8 - Plug-in bridge

3032470

<https://www.phoenixcontact.com/in/products/3032470>



Plug-in bridge, pitch: 8.2 mm, number of positions: 6, color: red

 Max. current carrying capacity: 41 A

FBS 10-8 - Plug-in bridge

3030323

<https://www.phoenixcontact.com/in/products/3030323>



Plug-in bridge, pitch: 8.2 mm, number of positions: 10, color: red

 Max. current carrying capacity: 41 A

XTV 6 - Feed-through terminal block

1329493

<https://www.phoenixcontact.com/in/products/1329493>




FBS 2-8 CT - Plug-in bridge

3033830

<https://www.phoenixcontact.com/in/products/3033830>



Plug-in bridge, pitch: 8.2 mm, number of positions: 2, color: orange

 Max. current carrying capacity: 41 A

FBS 3-8 CT - Plug-in bridge

3033831

<https://www.phoenixcontact.com/in/products/3033831>



Plug-in bridge, pitch: 8.2 mm, number of positions: 3, color: orange

 Max. current carrying capacity: 41 A

XTV 6 - Feed-through terminal block

1329493

<https://www.phoenixcontact.com/in/products/1329493>




FBS 4-8 CT - Plug-in bridge

3033832

<https://www.phoenixcontact.com/in/products/3033832>



Plug-in bridge, pitch: 8.2 mm, number of positions: 4, color: orange

 Max. current carrying capacity: 41 A


FBS 10-8 CT - Plug-in bridge

3033833

<https://www.phoenixcontact.com/in/products/3033833>



Plug-in bridge, pitch: 8.2 mm, number of positions: 10, color: orange

 Max. current carrying capacity: 41 A

XTV 6 - Feed-through terminal block

1329493

<https://www.phoenixcontact.com/in/products/1329493>




FBS 2-8 BU - Plug-in bridge

3032567

<https://www.phoenixcontact.com/in/products/3032567>



Plug-in bridge, pitch: 8.2 mm, number of positions: 2, color: blue

 Max. current carrying capacity: 41 A

FBS 3-8 BU - Plug-in bridge

3032570

<https://www.phoenixcontact.com/in/products/3032570>



Plug-in bridge, pitch: 8.2 mm, number of positions: 3, color: blue

 Max. current carrying capacity: 41 A

XTV 6 - Feed-through terminal block

1329493

<https://www.phoenixcontact.com/in/products/1329493>




FBS 4-8 BU - Plug-in bridge

3032583

<https://www.phoenixcontact.com/in/products/3032583>



Plug-in bridge, pitch: 8.2 mm, number of positions: 4, color: blue

 Max. current carrying capacity: 41 A


FBS 5-8 BU - Plug-in bridge

3032596

<https://www.phoenixcontact.com/in/products/3032596>



Plug-in bridge, pitch: 8.2 mm, number of positions: 5, color: blue

 Max. current carrying capacity: 41 A

XTV 6 - Feed-through terminal block

1329493

<https://www.phoenixcontact.com/in/products/1329493>




FBS 6-8 BU - Plug-in bridge

3032677

<https://www.phoenixcontact.com/in/products/3032677>



Plug-in bridge, pitch: 8.2 mm, number of positions: 6, color: blue

 Max. current carrying capacity: 41 A

FBS 10-8 BU - Plug-in bridge

3032606

<https://www.phoenixcontact.com/in/products/3032606>



Plug-in bridge, pitch: 8.2 mm, number of positions: 10, color: blue

 Max. current carrying capacity: 41 A

XTV 6 - Feed-through terminal block

1329493

<https://www.phoenixcontact.com/in/products/1329493>




FBS 2-8 GY - Plug-in bridge

3032621

<https://www.phoenixcontact.com/in/products/3032621>



Plug-in bridge, pitch: 8.2 mm, number of positions: 2, color: gray

 Max. current carrying capacity: 41 A

FBS 3-8 GY - Plug-in bridge

3032622

<https://www.phoenixcontact.com/in/products/3032622>



Plug-in bridge, pitch: 8.2 mm, number of positions: 3, color: gray

 Max. current carrying capacity: 41 A

XTV 6 - Feed-through terminal block

1329493

<https://www.phoenixcontact.com/in/products/1329493>




FBS 4-8 GY - Plug-in bridge

3032635

<https://www.phoenixcontact.com/in/products/3032635>



Plug-in bridge, pitch: 8.2 mm, number of positions: 4, color: gray

 Max. current carrying capacity: 41 A


FBS 5-8 GY - Plug-in bridge

3032648

<https://www.phoenixcontact.com/in/products/3032648>



Plug-in bridge, pitch: 8.2 mm, number of positions: 5, color: gray

 Max. current carrying capacity: 41 A

XTV 6 - Feed-through terminal block

1329493

<https://www.phoenixcontact.com/in/products/1329493>




FBS 6-8 GY - Plug-in bridge

3032664

<https://www.phoenixcontact.com/in/products/3032664>



Plug-in bridge, pitch: 8.2 mm, number of positions: 6, color: gray

 Max. current carrying capacity: 41 A


FBS 10-8 GY - Plug-in bridge

3032651

<https://www.phoenixcontact.com/in/products/3032651>



Plug-in bridge, pitch: 8.2 mm, number of positions: 10, color: gray

 Max. current carrying capacity: 41 A

XTV 6 - Feed-through terminal block

1329493

<https://www.phoenixcontact.com/in/products/1329493>



FBSRH 2-8 - Short-circuit connector

3033802

<https://www.phoenixcontact.com/in/products/3033802>



Short-circuit connector, pitch: 8.2 mm, number of positions: 2, color: red

FBSRH 3-8 - Short-circuit connector

3033803

<https://www.phoenixcontact.com/in/products/3033803>



Short-circuit connector, pitch: 8.2 mm, number of positions: 3, color: red

XTV 6 - Feed-through terminal block

1329493

<https://www.phoenixcontact.com/in/products/1329493>



FBSRH 4-8 - Short-circuit connector

3033804

<https://www.phoenixcontact.com/in/products/3033804>



Short-circuit connector, pitch: 8.2 mm, number of positions: 4, color: red

FBSR 2-8 - Plug-in bridge

3033808

<https://www.phoenixcontact.com/in/products/3033808>



Plug-in bridge, pitch: 8.2 mm, number of positions: 2, color: red

XTV 6 - Feed-through terminal block

1329493

<https://www.phoenixcontact.com/in/products/1329493>



FBSR 3-8 - Plug-in bridge

3001597

<https://www.phoenixcontact.com/in/products/3001597>



Plug-in bridge, pitch: 8.2 mm, number of positions: 3, color: red

FBSR 4-8 - Plug-in bridge

3000585

<https://www.phoenixcontact.com/in/products/3000585>



Plug-in bridge, pitch: 8.2 mm, number of positions: 4, color: red

XTV 6 - Feed-through terminal block

1329493

<https://www.phoenixcontact.com/in/products/1329493>



FBSR 5-8 - Plug-in bridge

3033809

<https://www.phoenixcontact.com/in/products/3033809>

Plug-in bridge, pitch: 8.2 mm, number of positions: 5, color: red



FBSR 10-8 - Plug-in bridge

3001599

<https://www.phoenixcontact.com/in/products/3001599>

Plug-in bridge, pitch: 8.2 mm, number of positions: 10, color: red



XTV 6 - Feed-through terminal block

1329493

<https://www.phoenixcontact.com/in/products/1329493>



FBSR 16-8 - Plug-in bridge

3033816

<https://www.phoenixcontact.com/in/products/3033816>



Plug-in bridge, pitch: 8.2 mm, number of positions: 16, color: red

SB-MER 2-8 - Switching jumper

3000587

<https://www.phoenixcontact.com/in/products/3000587>



Switching jumper, pitch: 8.2 mm, number of positions: 2, length: 25 mm, color: gray/orange

XTV 6 - Feed-through terminal block

1329493

<https://www.phoenixcontact.com/in/products/1329493>

SB-MER 3-8 - Switching jumper

3000588

<https://www.phoenixcontact.com/in/products/3000588>



Switching jumper, pitch: 8.2 mm, number of positions: 3, length: 25 mm, color: gray/orange

SB-MER 4-8 - Switching jumper

3000589

<https://www.phoenixcontact.com/in/products/3000589>



Switching jumper, pitch: 8.2 mm, number of positions: 4, length: 25 mm, color: gray/orange

XTV 6 - Feed-through terminal block

1329493

<https://www.phoenixcontact.com/in/products/1329493>




RB ST 6-(2,5/4) - Reducing bridge

3030860

<https://www.phoenixcontact.com/in/products/3030860>



Reducing bridge, pitch: 9 mm, number of positions: 2, length: 30 mm, color: red

 Max. current carrying capacity: 35 A


RB 16-6 - Reducing bridge

3047072

<https://www.phoenixcontact.com/in/products/3047072>



Reducing bridge, pitch: 12.2 mm, number of positions: 2, color: red

 Max. current carrying capacity: 37 A

XTV 6 - Feed-through terminal block

1329493

<https://www.phoenixcontact.com/in/products/1329493>

D-XTV 6 - End cover

1329515

<https://www.phoenixcontact.com/in/products/1329515>

End cover, length: 62.8 mm, width: 2.2 mm, height: 36 mm, color: gray



ATP-XTV 6 - Partition plate

1329523

<https://www.phoenixcontact.com/in/products/1329523>

Partition plate, length: 72.8 mm, width: 2.2 mm, height: 38.2 mm, color: gray



XTV 6 - Feed-through terminal block

1329493

<https://www.phoenixcontact.com/in/products/1329493>



SZF 2-0,8X4,0 - Screwdriver

1204520

<https://www.phoenixcontact.com/in/products/1204520>



Actuation tool, for ST terminal blocks, also suitable for use as a bladed screwdriver, size: 0.8 x 4.0 x 100 mm, 2-component grip, with non-slip grip

AI 1,5 -10 BK - Ferrule

3200195

<https://www.phoenixcontact.com/in/products/3200195>



Ferrule, sleeve length: 10 mm, length: 16 mm, color: black

XTV 6 - Feed-through terminal block

1329493

<https://www.phoenixcontact.com/in/products/1329493>

AI 1,5 -10 BK-1000 - Ferrule

3203134

<https://www.phoenixcontact.com/in/products/3203134>



Ferrule, sleeve length: 10 mm, length: 18 mm, color: black

AI 1,5 -12 BK - Ferrule

3201482

<https://www.phoenixcontact.com/in/products/3201482>



Ferrule, sleeve length: 12 mm, length: 18 mm, color: black

XTV 6 - Feed-through terminal block

1329493

<https://www.phoenixcontact.com/in/products/1329493>

AI 2,5 -10 BU - Ferrule

3202533

<https://www.phoenixcontact.com/in/products/3202533>



Ferrule, sleeve length: 10 mm, length: 17 mm, color: blue

AI 2,5 -10 BU-1000 - Ferrule

3203147

<https://www.phoenixcontact.com/in/products/3203147>



Ferrule, sleeve length: 10 mm, length: 17 mm, color: blue

XTV 6 - Feed-through terminal block

1329493

<https://www.phoenixcontact.com/in/products/1329493>

AI 2,5 -12 BU - Ferrule

3200962

<https://www.phoenixcontact.com/in/products/3200962>



Ferrule, sleeve length: 12 mm, length: 18 mm, color: blue

AI 4 -10 GY - Ferrule

3200535

<https://www.phoenixcontact.com/in/products/3200535>



Ferrule, sleeve length: 10 mm, length: 17 mm, color: gray

XTV 6 - Feed-through terminal block

1329493

<https://www.phoenixcontact.com/in/products/1329493>

AI 4 -12 GY - Ferrule

3200959

<https://www.phoenixcontact.com/in/products/3200959>



Ferrule, sleeve length: 12 mm, length: 20 mm, color: gray

AI 6 -12 YE - Ferrule

3200548

<https://www.phoenixcontact.com/in/products/3200548>



Ferrule, sleeve length: 12 mm, length: 20 mm, color: yellow

XTV 6 - Feed-through terminal block

1329493

<https://www.phoenixcontact.com/in/products/1329493>



CUTFOX 12 - Cable-cutting tool

1212128

<https://www.phoenixcontact.com/in/products/1212128>



Cable cutter, for copper and aluminum up to 12 mm diameter (up to 35 mm²)

CUTFOX 18 - Cable-cutting tool

1212129

<https://www.phoenixcontact.com/in/products/1212129>



Cable cutter, angled, for copper and aluminum up to 18 mm diameter (up to 50 mm²)

XTV 6 - Feed-through terminal block

1329493

<https://www.phoenixcontact.com/in/products/1329493>



CRIMPFOX DUO 16S - Crimping pliers

1202877

<https://www.phoenixcontact.com/in/products/1202877>



Crimping pliers, contact type: insulated and uninsulated ferrules, standards/regulations: DIN 46228-1, DIN 46228-4, UL 486F, Form A, E, F, cross-section, minimum: 0.14 mm², cross-section, maximum: 16 mm², for TWIN ferrules up to 2 mm² x 6 mm², automatic cross-section adjustment, rotating dies, lateral and front entry, crimping: square

CRIMPFOX 10S - Crimping pliers

1212045

<https://www.phoenixcontact.com/in/products/1212045>



Crimping pliers, for ferrules without insulating collar according to DIN 46228 Part 1 and ferrules with insulating collar according to DIN 46228 Part 4, 0.14 mm² ... 10 mm², unlockable pressure lock, lateral entry

XTV 6 - Feed-through terminal block

1329493

<https://www.phoenixcontact.com/in/products/1329493>



CRIMPFOX CENTRUS 10H - Crimping pliers

1213156

<https://www.phoenixcontact.com/in/products/1213156>



Crimping pliers, for uninsulated and insulated ferrules, DIN 46228 Part 1 and 4, from 0.14 mm² ... 10 mm², also for TWIN ferrules up to 2 x 4 mm², automatic cross section adjustment, lateral insertion, equipped with fall protection

NS 35/ 7,5 PERF 2000MM - DIN rail perforated

0801733

<https://www.phoenixcontact.com/in/products/0801733>



DIN rail perforated, acc. to EN 60715, material: Steel, galvanized, passivated with a thick layer, Standard profile, color: silver, Pack of 25 (50 m)

XTV 6 - Feed-through terminal block

1329493

<https://www.phoenixcontact.com/in/products/1329493>



NS 35/ 7,5 UNPERF 2000MM - DIN rail, unperforated

0801681

<https://www.phoenixcontact.com/in/products/0801681>



DIN rail, unperforated, acc. to EN 60715, material: Steel, galvanized, passivated with a thick layer, Standard profile, color: silver, Pack of 25 (50 m)

NS 35/ 7,5 WH PERF 2000MM - DIN rail perforated

1204119

<https://www.phoenixcontact.com/in/products/1204119>



DIN rail perforated, acc. to EN 60715, material: Steel, Galvanized, white passivated, Standard profile, color: silver, Pack of 25 (50 m)

XTV 6 - Feed-through terminal block

1329493

<https://www.phoenixcontact.com/in/products/1329493>



NS 35/ 7,5 WH UNPERF 2000MM-VPE 10 - DIN rail, unperforated

1204122

<https://www.phoenixcontact.com/in/products/1204122>



DIN rail, unperforated, acc. to EN 60715, material: Steel, Galvanized, white passivated, Standard profile, color: silver, Pack of 10 (20 m)

NS 35/ 7,5 AL UNPERF 2000MM - DIN rail, unperforated

0801704

<https://www.phoenixcontact.com/in/products/0801704>



DIN rail, unperforated, acc. to EN 60715, material: Aluminum, uncoated, Standard profile, color: silver, Pack of 25 (50 m)

XTV 6 - Feed-through terminal block

1329493

<https://www.phoenixcontact.com/in/products/1329493>

NS 35/ 7,5 ZN PERF 2000MM - DIN rail perforated

1206421

<https://www.phoenixcontact.com/in/products/1206421>



DIN rail perforated, acc. to EN 60715, material: Steel, galvanized, Standard profile, color: silver, Pack of 25 (50 m)

NS 35/ 7,5 ZN UNPERF 2000MM - DIN rail, unperforated

1206434

<https://www.phoenixcontact.com/in/products/1206434>



DIN rail, unperforated, acc. to EN 60715, material: Steel, galvanized, Standard profile, color: silver, Pack of 25 (50 m)

XTV 6 - Feed-through terminal block

1329493

<https://www.phoenixcontact.com/in/products/1329493>



NS 35/ 7,5 CU UNPERF 2000MM-VPE 10 - DIN rail, unperforated

0801762

<https://www.phoenixcontact.com/in/products/0801762>



DIN rail, unperforated, acc. to EN 60715, material: Copper, uncoated, Standard profile, color: copper-colored, Pack of 10 (20 m)

NS 35/ 7,5 CAP - End cap

1206560

<https://www.phoenixcontact.com/in/products/1206560>

DIN rail end piece, for DIN rail NS 35/7.5



XTV 6 - Feed-through terminal block

1329493

<https://www.phoenixcontact.com/in/products/1329493>



NS 35/15 PERF 2000MM - DIN rail perforated

1201730

<https://www.phoenixcontact.com/in/products/1201730>



DIN rail perforated, similar to EN 60715, material: Steel, galvanized, passivated with a thick layer, Standard profile, color: silver, Pack of 25 (50 m)

NS 35/15 UNPERF 2000MM - DIN rail, unperforated

1201714

<https://www.phoenixcontact.com/in/products/1201714>



DIN rail, unperforated, similar to EN 60715, material: Steel, galvanized, passivated with a thick layer, Standard profile, color: silver, Pack of 25 (50 m)

XTV 6 - Feed-through terminal block

1329493

<https://www.phoenixcontact.com/in/products/1329493>



NS 35/15 WH PERF 2000MM - DIN rail perforated

0806602

<https://www.phoenixcontact.com/in/products/0806602>



DIN rail perforated, similar to EN 60715, material: Steel, Galvanized, white passivated, Standard profile, color: white, Pack of 25 (50 m)

NS 35/15 WH UNPERF 2000MM-VPE 10 - DIN rail, unperforated

1204135

<https://www.phoenixcontact.com/in/products/1204135>



DIN rail, unperforated, similar to EN 60715, material: Steel, Galvanized, white passivated, Standard profile, color: silver, Pack of 10 (20 m)

XTV 6 - Feed-through terminal block

1329493

<https://www.phoenixcontact.com/in/products/1329493>

NS 35/15 AL UNPERF 2000MM - DIN rail, unperforated

1201756

<https://www.phoenixcontact.com/in/products/1201756>



DIN rail, unperforated, similar to EN 60715, material: Aluminum, uncoated, Standard profile, color: silver

NS 35/15 ZN PERF 2000MM - DIN rail perforated

1206599

<https://www.phoenixcontact.com/in/products/1206599>



DIN rail perforated, similar to EN 60715, material: Steel, galvanized, Standard profile, color: silver, Pack of 25 (50 m)

XTV 6 - Feed-through terminal block

1329493

<https://www.phoenixcontact.com/in/products/1329493>

NS 35/15 ZN UNPERF 2000MM - DIN rail, unperforated

1206586

<https://www.phoenixcontact.com/in/products/1206586>



DIN rail, unperforated, similar to EN 60715, material: Steel, galvanized, Standard profile, color: silver, Pack of 25 (50 m)

NS 35/15 CU UNPERF 2000MM-VPE 10 - DIN rail, unperforated

1201895

<https://www.phoenixcontact.com/in/products/1201895>



DIN rail, unperforated, similar to EN 60715, material: Copper, uncoated, Standard profile, color: copper-colored, Pack of 10 (20 m)

XTV 6 - Feed-through terminal block

1329493

<https://www.phoenixcontact.com/in/products/1329493>



NS 35/15 CAP - End cap

1206573

<https://www.phoenixcontact.com/in/products/1206573>

DIN rail end piece, for DIN rail NS 35/15



NS 35/15-2,3 UNPERF 2000MM-VPE 10 - DIN rail, unperforated

1201798

<https://www.phoenixcontact.com/in/products/1201798>



DIN rail, unperforated, acc. to EN 60715, material: Steel, galvanized, passivated with a thick layer, Standard profile 2.3 mm, color: silver, Pack of 10 (20 m)

XTV 6 - Feed-through terminal block

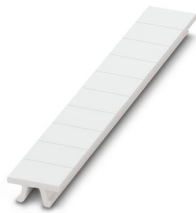
1329493

<https://www.phoenixcontact.com/in/products/1329493>

ZB 8:UNBEDRUCKT - Zack marker strip

1052002

<https://www.phoenixcontact.com/in/products/1052002>

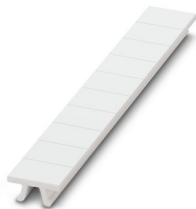


Zack marker strip, Strip, white, unlabeled, can be labeled with: CMS-P1-PLOTTER, PLOTMARK, mounting type: snapped, for terminal block width: 8.2 mm, lettering field size: 10.5 x 8.15 mm, Number of individual labels: 10

ZB 8 CUS - Zack marker strip

0825011

<https://www.phoenixcontact.com/in/products/0825011>



Zack marker strip, can be ordered: Strip, white, labeled according to customer specifications, mounting type: snap into tall marker groove, for terminal block width: 8.2 mm, lettering field size: 10.5 x 8.15 mm, Number of individual labels: 10

XTV 6 - Feed-through terminal block

1329493

<https://www.phoenixcontact.com/in/products/1329493>



UC-TM 8 - Marker for terminal blocks

0818072

<https://www.phoenixcontact.com/in/products/0818072>



Marker for terminal blocks, Sheet, white, unlabeled, can be labeled with: BLUEMARK ID COLOR, BLUEMARK ID, BLUEMARK CLED, PLOTMARK, CMS-P1-PLOTTER, mounting type: snapped, for terminal block width: 8.2 mm, lettering field size: 7.6 x 10.5 mm, Number of individual labels: 56

UC-TM 8 CUS - Marker for terminal blocks

0824597

<https://www.phoenixcontact.com/in/products/0824597>



Marker for terminal blocks, can be ordered: by sheet, white, labeled according to customer specifications, mounting type: snap into tall marker groove, for terminal block width: 8.2 mm, lettering field size: 7.6 x 10.5 mm, Number of individual labels: 56

XTV 6 - Feed-through terminal block

1329493

<https://www.phoenixcontact.com/in/products/1329493>



UCT-TM 8 - Marker for terminal blocks

0828740

<https://www.phoenixcontact.com/in/products/0828740>



Marker for terminal blocks, Sheet, white, unlabeled, can be labeled with: TOPMARK NEO, TOPMARK LASER, BLUEMARK ID COLOR, BLUEMARK ID, BLUEMARK CLED, THERMOMARK PRIME, THERMOMARK CARD 2.0, THERMOMARK CARD, mounting type: snapped, for terminal block width: 8.2 mm, lettering field size: 7.6 x 10.5 mm, Number of individual labels: 42

UCT-TM 8 CUS - Marker for terminal blocks

0829616

<https://www.phoenixcontact.com/in/products/0829616>



Marker for terminal blocks, can be ordered: by sheet, white, labeled according to customer specifications, mounting type: snap into tall marker groove, for terminal block width: 8.2 mm, lettering field size: 7.6 x 10.5 mm, Number of individual labels: 42

XTV 6 - Feed-through terminal block

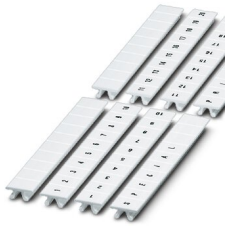
1329493

<https://www.phoenixcontact.com/in/products/1329493>

ZB 8,LGS:FORTL.ZAHLEN - Zack marker strip

1052015

<https://www.phoenixcontact.com/in/products/1052015>

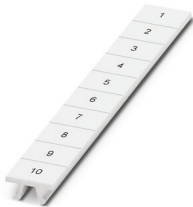


Zack marker strip, Strip, white, labeled, can be labeled with: CMS-P1-PLOTTER, printed horizontally: consecutive numbers 1 ... 10, 11 ... 20, etc. up to 91 ... 100, mounting type: snapped, for terminal block width: 8.2 mm, lettering field size: 10. 5 x 8.15 mm, Number of individual labels: 10

ZB 8,QR:FORTL.ZAHLEN - Zack marker strip

1052028

<https://www.phoenixcontact.com/in/products/1052028>



Zack marker strip, Strip, white, labeled, can be labeled with: CMS-P1-PLOTTER, Printed vertically: consecutive numbers 1 ... 10, 11 ... 20, etc. up to 91 ... 100, mounting type: snapped, for terminal block width: 8.2 mm, lettering field size: 10. 5 x 8.15 mm, Number of individual labels: 10

XTV 6 - Feed-through terminal block

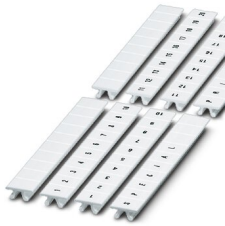
1329493

<https://www.phoenixcontact.com/in/products/1329493>

ZB 8,LGS:L1-N,PE - Marker for terminal blocks

1052413

<https://www.phoenixcontact.com/in/products/1052413>



Marker for terminal blocks, Strip, white, labeled, can be labeled with: CMS-P1-PLOTTER, horizontal: L1, L2, L3, N, PE, L1, L2, L3, N, PE, mounting type: snapped, for terminal block width: 8.2 mm, lettering field size: 10.5 x 8.15 mm, Number of individual labels: 10

ZBF 8:UNBEDRUCKT - Zack Marker strip, flat

0808781

<https://www.phoenixcontact.com/in/products/0808781>



Zack Marker strip, flat, Strip, white, unlabeled, can be labeled with: PLOTMARK, CMS-P1-PLOTTER, mounting type: snapped, for terminal block width: 8 mm, lettering field size: 5.15 x 8.15 mm, Number of individual labels: 10

XTV 6 - Feed-through terminal block

1329493

<https://www.phoenixcontact.com/in/products/1329493>



ZBF 8 CUS - Zack Marker strip, flat

0825030

<https://www.phoenixcontact.com/in/products/0825030>



Zack Marker strip, flat, can be ordered: Strip, white, labeled according to customer specifications, mounting type: snap into flat marker groove, for terminal block width: 8 mm, lettering field size: 5.15 x 8.15 mm, Number of individual labels: 10

ZBF 8,LGS:FORTL.ZAHLEN - Zack Marker strip, flat

0808804

<https://www.phoenixcontact.com/in/products/0808804>



Zack Marker strip, flat, Strip, white, labeled, printed horizontally: consecutive numbers 1 ... 10, 11 ... 20, etc. up to 101 ... 110, mounting type: snapped, for terminal block width: 8 mm, lettering field size: 5.15 x 8.15 mm, Number of individual labels: 10

XTV 6 - Feed-through terminal block

1329493

<https://www.phoenixcontact.com/in/products/1329493>



UC-TMF 8 - Marker for terminal blocks

0818137

<https://www.phoenixcontact.com/in/products/0818137>



Marker for terminal blocks, Sheet, white, unlabeled, can be labeled with: BLUEMARK ID COLOR, BLUEMARK ID, BLUEMARK CLED, PLOTMARK, CMS-P1-PLOTTER, mounting type: snapped, for terminal block width: 8.2 mm, lettering field size: 7.6 x 5.1 mm, Number of individual labels: 56

UC-TMF 8 CUS - Marker for terminal blocks

0824654

<https://www.phoenixcontact.com/in/products/0824654>



Marker for terminal blocks, can be ordered: by sheet, white, labeled according to customer specifications, mounting type: snap into flat marker groove, for terminal block width: 8.2 mm, lettering field size: 7.6 x 5.1 mm, Number of individual labels: 56

XTV 6 - Feed-through terminal block

1329493

<https://www.phoenixcontact.com/in/products/1329493>



UCT-TMF 8 - Marker for terminal blocks

0828748

<https://www.phoenixcontact.com/in/products/0828748>



Marker for terminal blocks, Sheet, white, unlabeled, can be labeled with: TOPMARK NEO, TOPMARK LASER, BLUEMARK ID COLOR, BLUEMARK ID, BLUEMARK CLED, THERMOMARK PRIME, THERMOMARK CARD 2.0, THERMOMARK CARD, mounting type: snapped, for terminal block width: 8.2 mm, lettering field size: 7.4 x 4.7 mm, Number of individual labels: 42

UCT-TMF 8 CUS - Marker for terminal blocks

0829672

<https://www.phoenixcontact.com/in/products/0829672>



Marker for terminal blocks, can be ordered: by sheet, white, labeled according to customer specifications, mounting type: snap into flat marker groove, for terminal block width: 8.2 mm, lettering field size: 7.4 x 4.7 mm, Number of individual labels: 42

XTV 6 - Feed-through terminal block

1329493

<https://www.phoenixcontact.com/in/products/1329493>



MPS-MT - Test plugs

0201744

<https://www.phoenixcontact.com/in/products/0201744>



Test plugs, with solder connection up to 1 mm² conductor cross section, number of positions: 1, color: gray

MPS-IH WH - Insulating sleeve

0201663

<https://www.phoenixcontact.com/in/products/0201663>

Insulating sleeve, color: white



XTV 6 - Feed-through terminal block

1329493

<https://www.phoenixcontact.com/in/products/1329493>



MPS-IH RD - Insulating sleeve

0201676

<https://www.phoenixcontact.com/in/products/0201676>

Insulating sleeve, color: red

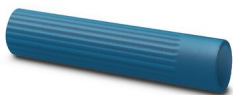


MPS-IH BU - Insulating sleeve

0201689

<https://www.phoenixcontact.com/in/products/0201689>

Insulating sleeve, color: blue



XTV 6 - Feed-through terminal block

1329493

<https://www.phoenixcontact.com/in/products/1329493>



MPS-IH YE - Insulating sleeve

0201692

<https://www.phoenixcontact.com/in/products/0201692>

Insulating sleeve, color: yellow



MPS-IH GN - Insulating sleeve

0201702

<https://www.phoenixcontact.com/in/products/0201702>

Insulating sleeve, color: green



XTV 6 - Feed-through terminal block

1329493

<https://www.phoenixcontact.com/in/products/1329493>



MPS-IH GY - Insulating sleeve

0201728

<https://www.phoenixcontact.com/in/products/0201728>

Insulating sleeve, color: gray



MPS-IH BK - Insulating sleeve

0201731

<https://www.phoenixcontact.com/in/products/0201731>

Insulating sleeve, color: black



XTV 6 - Feed-through terminal block

1329493

<https://www.phoenixcontact.com/in/products/1329493>



PAI-4-FIX BU - Test adapter

3032729

<https://www.phoenixcontact.com/in/products/3032729>



Test adapter, Touch proof against unintentional direct contact according to DIN EN 50274 when plugged in, for 4 mm test plug and terminal blocks with 8.2 mm pitch, number of positions: 1, color: blue

PAI-4-FIX OG - Test adapter

3034455

<https://www.phoenixcontact.com/in/products/3034455>



4 mm test adapter, for terminal blocks with 8.2 mm pitch

XTV 6 - Feed-through terminal block

1329493

<https://www.phoenixcontact.com/in/products/1329493>



PAI-4-FIX YE - Test adapter

3032745

<https://www.phoenixcontact.com/in/products/3032745>



Test adapter, Touch proof against unintentional direct contact according to DIN EN 50274 when plugged in, for 4 mm test plug and terminal blocks with 8.2 mm pitch, number of positions: 1, color: yellow

PAI-4-FIX RD - Test adapter

3032732

<https://www.phoenixcontact.com/in/products/3032732>



Test adapter, Touch proof against unintentional direct contact according to DIN EN 50274 when plugged in, for 4 mm test plug and terminal blocks with 8.2 mm pitch, number of positions: 1, color: red

XTV 6 - Feed-through terminal block

1329493

<https://www.phoenixcontact.com/in/products/1329493>



PAI-4-FIX GN - Test adapter

3032758

<https://www.phoenixcontact.com/in/products/3032758>



Test adapter, Touch proof against unintentional direct contact according to DIN EN 50274 when plugged in, for 4 mm test plug and terminal blocks with 8.2 mm pitch, number of positions: 1, color: green

PAI-4-FIX BK - Test adapter

3032774

<https://www.phoenixcontact.com/in/products/3032774>



Test adapter, Touch proof against unintentional direct contact according to DIN EN 50274 when plugged in, for 4 mm test plug and terminal blocks with 8.2 mm pitch, number of positions: 1, color: black

XTV 6 - Feed-through terminal block

1329493

<https://www.phoenixcontact.com/in/products/1329493>

PAI-4-FIX GY - Test adapter

3032790

<https://www.phoenixcontact.com/in/products/3032790>



Test adapter, Touch proof against unintentional direct contact according to DIN EN 50274 when plugged in, for 4 mm test plug and terminal blocks with 8.2 mm pitch, number of positions: 1, color: gray

PAI-4-FIX VT - Test adapter

3032761

<https://www.phoenixcontact.com/in/products/3032761>



Test adapter, Touch proof against unintentional direct contact according to DIN EN 50274 when plugged in, for 4 mm test plug and terminal blocks with 4.2 mm .. 8.2 mm pitch, number of positions: 1, color: violet

XTV 6 - Feed-through terminal block

1329493

<https://www.phoenixcontact.com/in/products/1329493>



PAI-4-FIX BN - Test adapter

3032787

<https://www.phoenixcontact.com/in/products/3032787>



Test adapter, Touch proof against unintentional direct contact according to DIN EN 50274 when plugged in, for 4 mm test plug and terminal blocks with 8.2 mm pitch, number of positions: 1, color: brown

PAI-4-FIX WH - Test adapter

3032797

<https://www.phoenixcontact.com/in/products/3032797>



4 mm test adapter, for terminal blocks with 8.2 mm pitch

XTV 6 - Feed-through terminal block

1329493

<https://www.phoenixcontact.com/in/products/1329493>



PAIS-4-FIX GY - Test adapter

3032791

<https://www.phoenixcontact.com/in/products/3032791>



Test adapter, Touch proof against unintentional direct contact according to DIN EN 50274 when plugged in, for 4 mm test plug and terminal blocks with 5.2 mm, 6.2 mm, and 8.2 mm pitch, number of positions: 1, color: gray

PAIS-4-FIX BK - Test adapter

3032792

<https://www.phoenixcontact.com/in/products/3032792>



Test adapter, Touch proof against unintentional direct contact according to DIN EN 50274 when plugged in, for 4 mm test plug and terminal blocks with 5.2 mm, 6.2 mm, and 8.2 mm pitch, number of positions: 1, color: black

XTV 6 - Feed-through terminal block

1329493

<https://www.phoenixcontact.com/in/products/1329493>

PAIS-4-FIX RD - Test adapter

3032793

<https://www.phoenixcontact.com/in/products/3032793>



Test adapter, Do not plug in while the power is connected, for 4 mm test plug and terminal blocks with 5.2 mm, 6.2 mm, and 8.2 mm pitch, number of positions: 1, color: red

PAIS-4-FIX BU - Test adapter

3032798

<https://www.phoenixcontact.com/in/products/3032798>



Test adapter, Touch proof against unintentional direct contact according to DIN EN 50274 when plugged in, for 4 mm test plug and terminal blocks with 5.2 mm, 6.2 mm, and 8.2 mm pitch, number of positions: 1, color: blue

XTV 6 - Feed-through terminal block

1329493

<https://www.phoenixcontact.com/in/products/1329493>

PAIS-4-FIX YE - Test adapter

3032799

<https://www.phoenixcontact.com/in/products/3032799>



Test adapter, Touch proof against unintentional direct contact according to DIN EN 50274 when plugged in, for 4 mm test plug and terminal blocks with 5.2 mm, 6.2 mm, and 8.2 mm pitch, number of positions: 1, color: yellow

PAIS-4-FIX GN - Test adapter

3032801

<https://www.phoenixcontact.com/in/products/3032801>



Test adapter, Touch proof against unintentional direct contact according to DIN EN 50274 when plugged in, for 4 mm test plug and terminal blocks with 5.2 mm, 6.2 mm, and 8.2 mm pitch, number of positions: 1, color: green

XTV 6 - Feed-through terminal block

1329493

<https://www.phoenixcontact.com/in/products/1329493>



PAIS-4-FIX VT - Test adapter

3032802

<https://www.phoenixcontact.com/in/products/3032802>



Test adapter, Touch proof against unintentional direct contact according to DIN EN 50274 when plugged in, for 4 mm test plug and terminal blocks with 5.2 mm, 6.2 mm, and 8.2 mm pitch, number of positions: 1, color: violet

PS-8 - Test plugs

3031005

<https://www.phoenixcontact.com/in/products/3031005>



Test plugs, Modular test plug, number of positions: 1, color: red

XTV 6 - Feed-through terminal block

1329493

<https://www.phoenixcontact.com/in/products/1329493>

DP PS-8 - Spacer plate

3036741

<https://www.phoenixcontact.com/in/products/3036741>



Spacer plate, length: 22.4 mm, width: 8.2 mm, height: 29 mm, number of positions: 1, color: red

PS-8/2,3MM RD - Test plugs

3048564

<https://www.phoenixcontact.com/in/products/3048564>



Test plugs, number of positions: 1, color: red

XTV 6 - Feed-through terminal block

1329493

<https://www.phoenixcontact.com/in/products/1329493>

PROJECT COMPLETE - Software

1050453

<https://www.phoenixcontact.com/in/products/1050453>



Intuitive planning and marking software for configuring terminal strips and for professional marking of marking materials for terminal blocks, conductors, cables, devices, and systems. The software is available for download

E/UK - End clamp

1201442

<https://www.phoenixcontact.com/in/products/1201442>



End clamp, material: PA, color: gray, Mounting on a DIN rail NS 32 or NS 35

XTV 6 - Feed-through terminal block

1329493

<https://www.phoenixcontact.com/in/products/1329493>



E/UK 1 - End clamp

1201413

<https://www.phoenixcontact.com/in/products/1201413>



End clamps, for supporting the ends of double-level and three-level terminal blocks, width: 10 mm, color: gray

TMT (EX9,5)R - Marker for terminal blocks

0828295

<https://www.phoenixcontact.com/in/products/0828295>



Marker for terminal blocks, Roll, white, unlabeled, can be labeled with: THERMOMARK E.300 (D)/600 (D), THERMOMARK ROLL 2.0, THERMOMARK ROLL, THERMOMARK ROLL X1, THERMOMARK ROLLMASTER 300/600, THERMOMARK X1.2, mounting type: snapped, snap into tall marker groove, for terminal block width: 30000 mm, lettering field size: 9.5 x 50000 mm, Number of individual labels: 1

XTV 6 - Feed-through terminal block

1329493

<https://www.phoenixcontact.com/in/products/1329493>



US-TM 100 - Marker for terminal blocks

0829255

<https://www.phoenixcontact.com/in/products/0829255>



Marker for terminal blocks, Card, white, unlabeled, can be labeled with: BLUEMARK ID COLOR, BLUEMARK ID, THERMOMARK PRIME, THERMOMARK CARD 2.0, THERMOMARK CARD, mounting type: snapped, lettering field size: 104 x 9.8 mm, Number of individual labels: 13

CLIPFIX 35 - End clamp

3022218

<https://www.phoenixcontact.com/in/products/3022218>



Quick mounting end clamp for NS 35/7,5 DIN rail or NS 35/15 DIN rail, with marking option, width: 9.5 mm, color: gray

XTV 6 - Feed-through terminal block

1329493

<https://www.phoenixcontact.com/in/products/1329493>



CLIPFIX 35-5 - End clamp

3022276

<https://www.phoenixcontact.com/in/products/3022276>

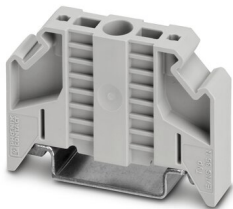


Quick mounting end clamp for NS 35/7,5 DIN rail or NS 35/15 DIN rail, with marking option, with parking option for FBS...5, FBS...6, KSS 5, KSS 6, width: 5.15 mm, color: gray

E/NS 35 N - End clamp

0800886

<https://www.phoenixcontact.com/in/products/0800886>



End clamp, width: 9.5 mm, color: gray

Phoenix Contact 2023 © - all rights reserved
<https://www.phoenixcontact.com>

PHOENIX CONTACT (I) Pvt. Ltd.
A-58/2, Okhla Industrial Area, Phase - II, New Delhi-110 020

+91.1275.71420
info@phoenixcontact.co.in