

DESIGNED & DIMENSIONED
IN MILLIMETERS[INCHES]

DO NOT
SCALE FROM
THIS PRINT

BNC7T-J-P-XX-ST-EM2

GENDER
-J: JACK

TERMINATION
-EM2: EDGE MOUNT (FOR 2.29[.090] THICK PCB)

TYPE
-P: PCB

ORIENTATION
-ST: STRAIGHT

PLATING SPECIFICATION
-HN: HEAVY GOLD/NICKEL (SEE NOTES 5 & 6)
(SUB-BNC7T-J-P-HN-ST-EM2)
(BTNC-NUT-003-N)
(BTNC-LWAS-001-N)

[B]-MN: MEDIUM GOLD/NICKEL (SEE NOTES 5 & 6)
(SUB-BNC7T-J-P-MN-ST-EM2)
(BTNC-NUT-003-N)
(BTNC-LWAS-001-N).

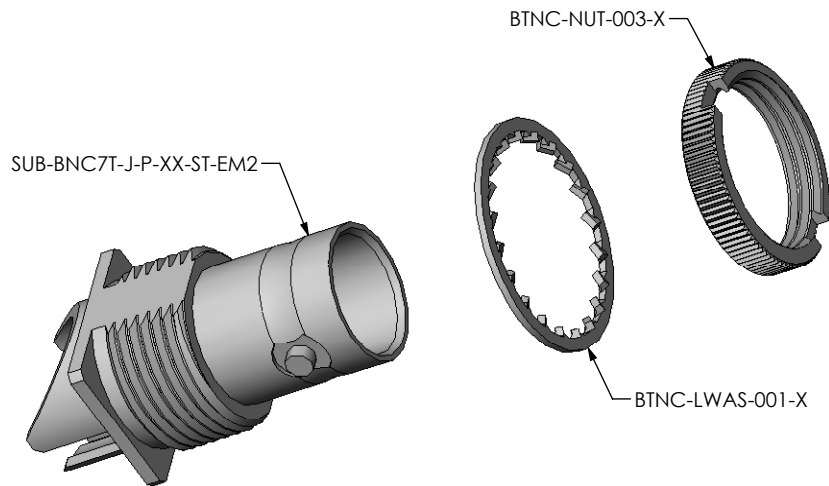
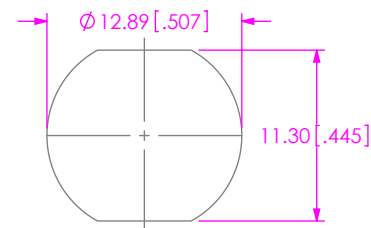


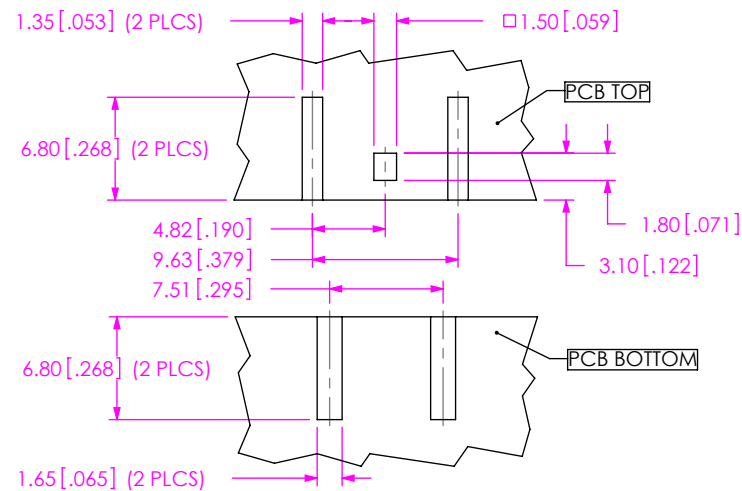
FIG 1.
BNC7T-J-P-XX-ST-EM2 SHOWN

RECOMMENDED MOUNTING HOLE

4.00[.157] MAX. PANEL THICKNESS



RECOMMENDED LAYOUT
FOR 2.29[.090] PCB



NOTES:

- ⊕ REPRESENTS A CRITICAL DIMENSION.
- FABRICATED PARTS MUST BE FREE OF SCRATCHES, TOOL MARKS, ETC.
- SUPPLIER TO REMOVE BURRS.
- RoHS COMPLIANT.
- COMPONENT PLATING DESIGNATIONS:
-H: 0.000030" MIN. GOLD OVER 0.000050" MIN. NICKEL.
[B]-M: 0.000010" MIN. GOLD OVER 0.000050" MIN. NICKEL.
-N: 0.000100" MIN. NICKEL.
- ASSEMBLY PLATING DESIGNATIONS:
-HN: (CENTER CONTACT)-H
(OUTER CONTACT) -N
(REMAINING METAL PARTS) -N
[B]-MN: (CENTER CONTACT)-M
(OUTER CONTACT) -N
(REMAINING METAL PARTS) -N

F:\DWG\MISC\mktg\BNC7T-J-P-XX-ST-EM2-MKT.SLDDRW

UNLESS OTHERWISE SPECIFIED,
DIMENSIONS ARE IN MILLIMETERS.

TOLERANCES ARE:

DECIMALS	ANGLES
.X: ±0.3 [0.1]	2°
.XX: ±0.13 [0.05]	
.XXX: ±0.051 [0.020]	

PROPRIETARY NOTE

THIS DOCUMENT CONTAINS INFORMATION CONFIDENTIAL AND PROPRIETARY TO SAMTEC, INC. AND SHALL NOT BE REPRODUCED OR TRANSFERRED TO OTHER DOCUMENTS OR DISCLOSED TO OTHERS OR USED FOR ANY PURPOSE OTHER THAN THAT WHICH IT WAS OBTAINED WITHOUT THE EXPRESSED WRITTEN CONSENT OF SAMTEC, INC.



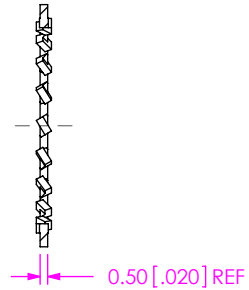
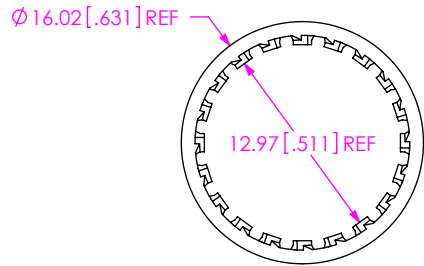
520 PARK EAST BLVD, NEW ALBANY, IN 47150
PHONE: 812-944-6733 FAX: 812-948-5047
e-Mail: info@SAMTEC.com code: 55322

DO NOT SCALE DRAWING SHEET SCALE: 2:1

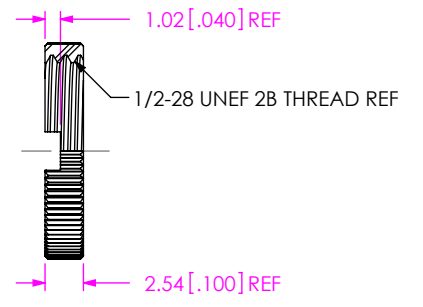
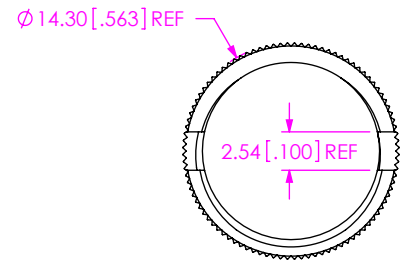
DESCRIPTION:
BNC7T EDGE MOUNT STRAIGHT JACK

DWG. NO.
BNC7T-J-P-XX-ST-EM2

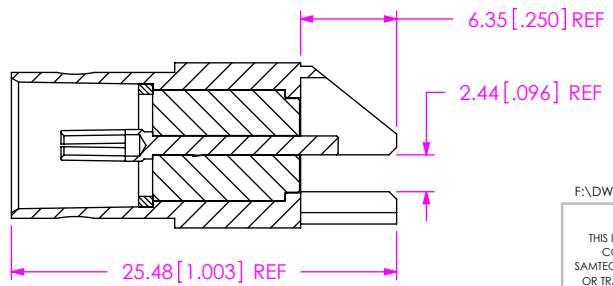
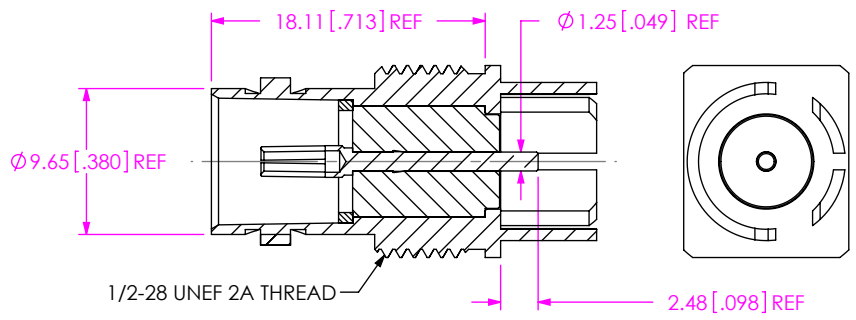
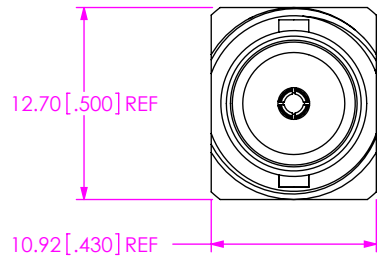
BY: G.HERMAN 04/04/2008 SHEET 1 OF 2



SAMTEC PART NUMBER	ITEM
BTNC-LWAS-001-X	LOCKWASHER



SAMTEC PART NUMBER	ITEM
BTNC-NUT-003-X	KNURLED NUT



SAMTEC PART NUMBER	ITEM
SUB-BNC7T-J-P-XX-ST-EM2	SUB ASSEMBLY

F:\DWG\MISC\Mktg\BNC7T-J-P-XX-ST-EM2-MKT.SLDDRW

PROPRIETARY NOTE
 THIS DOCUMENT CONTAINS INFORMATION
 CONFIDENTIAL AND PROPRIETARY TO
 SAMTEC, INC. AND SHALL NOT BE REPRODUCED
 OR TRANSFERRED TO OTHER DOCUMENTS OR
 DISCLOSED TO OTHERS OR USED FOR ANY
 PURPOSE OTHER THAN THAT WHICH IT WAS
 OBTAINED WITHOUT THE EXPRESSED WRITTEN
 CONSENT OF SAMTEC, INC.



520 PARK EAST BLVD, NEW ALBANY, IN 47150
 PHONE: 812-944-6733 FAX: 812-948-5047
 e-Mail: info@SAMTEC.com code: 55322

DO NOT SCALE DRAWING

 SHEET SCALE: 2:1

DESCRIPTION:
 BNC7T EDGE MOUNT STRAIGHT JACK
 DWG. NO.
 BNC7T-J-P-XX-ST-EM2
 BY: G.HERMAN 04/04/2008 SHEET 2 OF 2