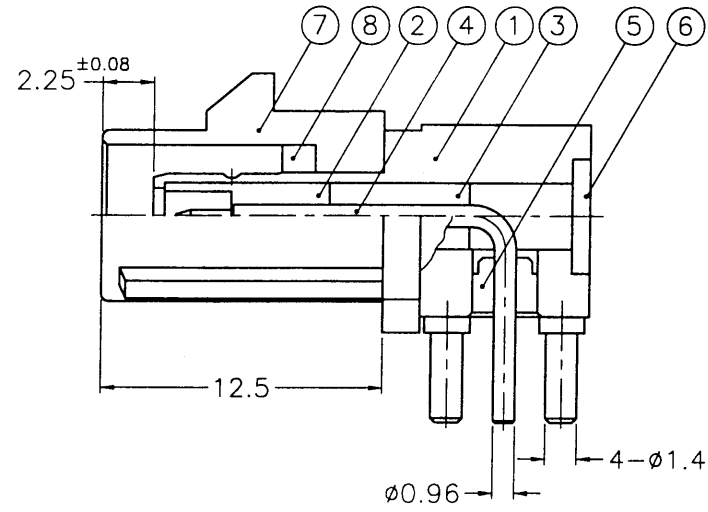
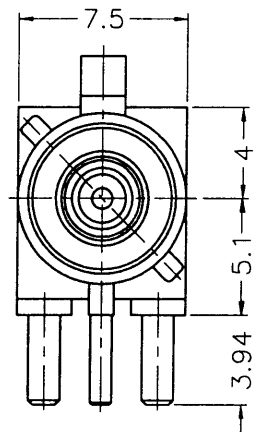
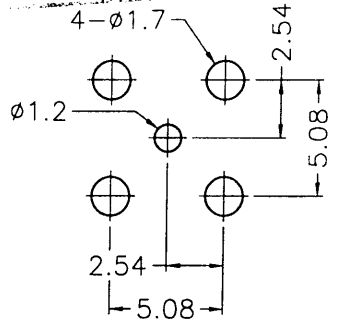


REVISIONS		
ISS	ZONE	DESCRIPTION\PER REQUEST\DATE

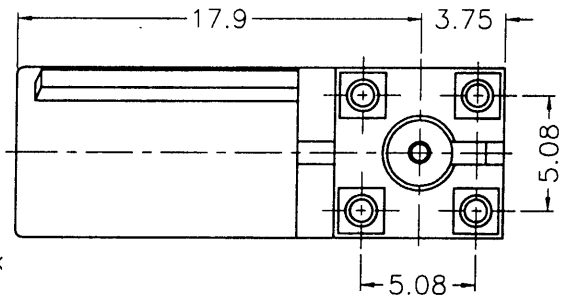


SALES



PCB MOUNTING HOLE
(印刷电路板架設孔)

ISSUED
2003. 4. 02
R&D



- NOTES: FINISH (PLATING THICKNESS IN MICRO-INCHES)
- BRASS PER QQ-B-626, ALLOY 360, 1/2 H ; JIS H3250 C 3604BD OR EQUIVALENT
 - NICKEL PL. 60 MIN. THICK OVER COPPER STRIKE
 - GOLD PL. 30 MIN. THICK OVER NICKEL PL. 100 MIN. THICK OVER COPPER STRIKE
 - NICKEL PL. 100 MIN. THICK OVER COPPER PL. 300 MIN. THICK
 - TEFLON MIL-P-19468
 - ZINC DIECAST PER JIS H5301 ZDC2 OR EQUIVALENT
 - NYLON46 (WITH 30% GLASS FIBER)PER DSM ENGINEERING PLASTICS B V GRADE TE250F6 OR EQUIVALENT
 - BRASS PER QQ-B-613, ALLOY 260, H ; JIS H3100 C 2680R-H OR EQUIVALENT

* HEATING STAGE: RECOMMEND SOLDERING TEMPERATURE 225°C WITHIN 40 SECONDS.

TABLE				
KEY CODING	PART NO.	DRAWING NO.	ITEM NO.	LOCK COVER
A	FA1-NARP-PCB-10	FK1252AW-005-NT30G-50	FK1252AEA02NC5F	FKLC90101A
B	FA1-NBRP-PCB-10	FK1252BW-005-NT30G-50	FK1252AEB02NC5F	FKLC90102A
C	FA1-NCRP-PCB-10	FK1252CW-005-NT30G-50	FK1252AEC02NC5F	FKLC90103A
D	FA1-NDRP-PCB-10	FK1252DW-005-NT30G-50	FK1252AED02NC5F	FKLC90104A
E	FA1-NERP-PCB-10	FK1252EW-005-NT30G-50	FK1252AEE02NC5F	FKLC90105A
F	FA1-NFRP-PCB-10	FK1252FW-005-NT30G-50	FK1252AEF02NC5F	FKLC90106A
G	FA1-NGRP-PCB-10	FK1252GW-005-NT30G-50	FK1252AEG02NC5F	FKLC90107A
H	FA1-NHRP-PCB-10	FK1252HW-005-NT30G-50	FK1252AEH02NC5F	FKLC90108A
I	FA1-NIRP-PCB-10	FK1252IW-005-NT30G-50	FK1252AEI02NC5F	FKLC90109A
K	FA1-NKRP-PCB-10	FK1252KW-005-NT30G-50	FK1252AEK02NC5F	FKLC90110A
Z	FA1-NZRP-PCB-10	FK1252ZW-005-NT30G-50	FK1252AEZ02NC5F	FKLC90111A

NO.	DESCRIPTION	MATERIAL	FINISH	Q'TY	DRAWING NO.
8	RING	NOTE 1	NOTE 2	1	FKLR00101A
7	LOCK COVER	NOTE 7	1	SEE TABLE	
6	COVER	NOTE 8	NOTE 2	1	CV-523X06-T-B
5	INSULATOR	NOTE 5	NATURAL	1	FKNS01501A
4	CONTACT PIN	NOTE 1	NOTE 3	1	FKCP01203A
3	INSULATOR	NOTE 5	NATURAL	1	FKNS00906A
2	INSULATOR	NOTE 5	NATURAL	1	FKNS00401A
1	BODY	NOTE 6	NOTE 4	1	FKBD03501A

DIMENSIONS ARE IN MILLIMETERS
UNLESS OTHERWISE SPECIFIED TOLERANCES

0.5-6 = ±0.2
6-30 = ±0.4
30-120 = ±0.6
120-315 = ±1
315-1000 = ±1.6
1000-2000 = ±2.4

PART NO.	FA1-NXRP-PCB-10	
APPROVED	<i>[Signature]</i>	DATE 04-02-03'
CHECKED	<i>[Signature]</i>	DATE 04-02-03'
DRAWN	<i>[Signature]</i>	DATE 04-02-03'
FILE NO.	F:\DWG\FK\1252XX\005\50\NT30G	

Amphenol	
Danbury,CT,USA-Tainan,Taiwan-Shenzhen,China	
TITLE	FAKRA SMB R/A PCB MOUNT PLUG
DRAWING NO.	FK1252XX-005-NT30G-50
ITEM NO.	FK1252AEX02NC5F

RD-DR 17735 8