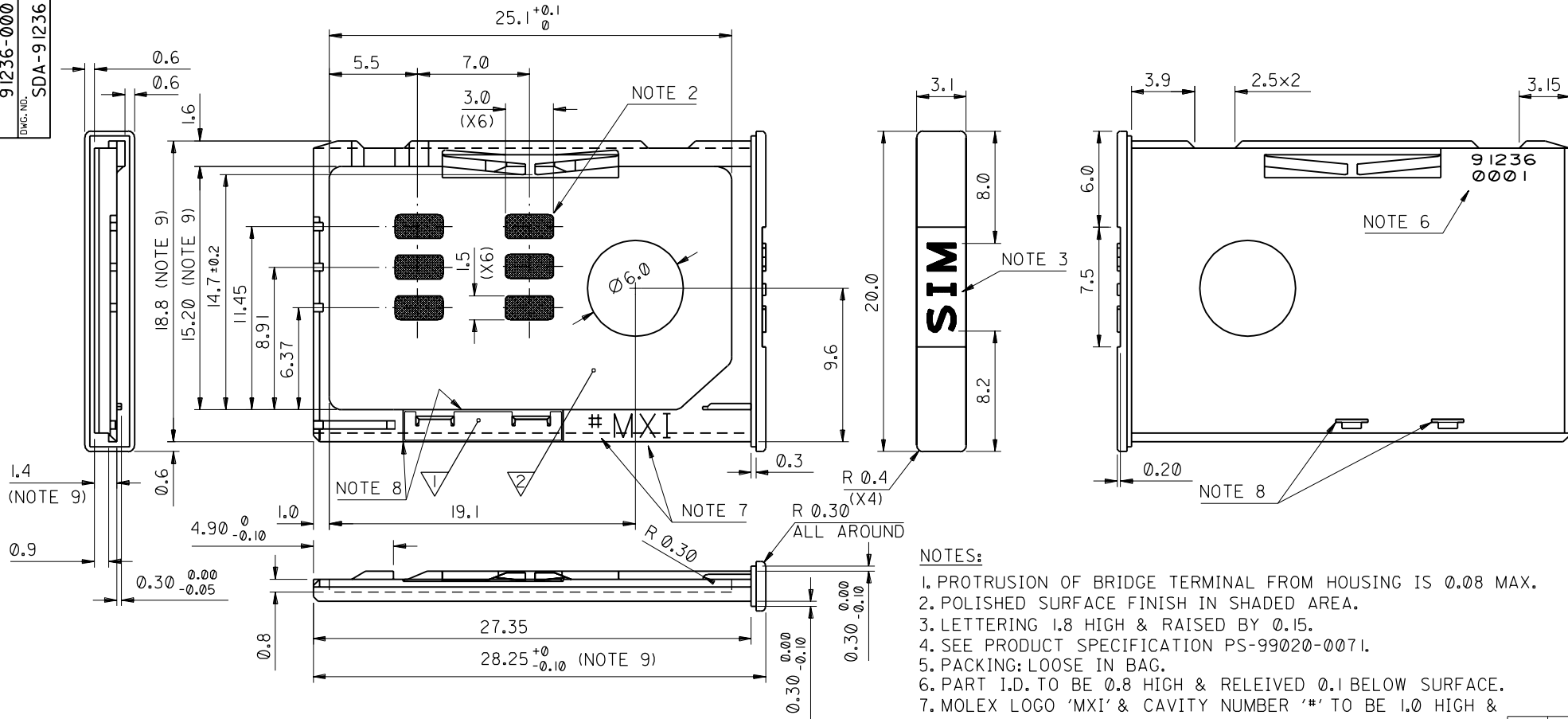


PART NO. 91236-0001  
 DWG. NO. SDA-91236



- NOTES:**
1. PROTRUSION OF BRIDGE TERMINAL FROM HOUSING IS 0.08 MAX.
  2. POLISHED SURFACE FINISH IN SHADED AREA.
  3. LETTERING 1.8 HIGH & RAISED BY 0.15.
  4. SEE PRODUCT SPECIFICATION PS-99020-0071.
  5. PACKING: LOOSE IN BAG.
  6. PART I.D. TO BE 0.8 HIGH & RELEIVED 0.1 BELOW SURFACE.
  7. MOLEX LOGO 'MXI' & CAVITY NUMBER '#' TO BE 1.0 HIGH & RAISED 0.1max.
  8. BRIDGE TERMINAL MUST NOT PROTRUDE BEYOND EDGES SHOWN
  9. APPLICABLE DIMENSIONS FOR PROCESS CAPABILITY STUDY

ITEM	COMPONENT	QTY	MATERIAL
1	TERMINAL	1	0.15 PHOSPHOR BRONZE
2	HOUSING	1	0.1um MIN Au OVER Pd/Ni IN CONTACT AREA GF PBT, BLACK

6	K
5	F
4	G
3	J
2	G
1	L

ADDED SECOND GATE EC NO. ECN E2002-0530 DRWN: 01.12.10 FDUGGAN CHK: APPR:	QUALITY SYMBOLS MAJOR = CRITICAL =	GENERAL TOLERANCES: (UNLESS SPECIFIED) mm INCH	SCALE <b>4:1</b>	DESIGN UNITS <input checked="" type="checkbox"/> mm <input type="checkbox"/> INCH	THIRD ANGLE PROJECTION <input type="checkbox"/> mm <input type="checkbox"/> INCH <input checked="" type="checkbox"/> mm ONLY	DIMENSIONS: <input type="checkbox"/> mm <input type="checkbox"/> INCH <input checked="" type="checkbox"/> mm ONLY	SHT REV CAD ONLY	
	DESCRIPTION REV	DRAWN BY & DATE <b>FINDORAK 00/08/28</b>	CHECKED BY & DATE <b>D.HANNON 00/08/28</b>	TITLE: <b>CARD HOLDER</b>				
	APPROVED BY & DATE <b>M.WILHITE 00/08/28</b>	MOLEX INCORPORATED				MATERIAL NO. <b>91236-0001</b>	DRAWING NO. <b>SDA-91236</b>	SHEET NO. <b>10F6</b>
	DRAFT WHERE APPLICABLE MUST REMAIN WITHIN DIMENSIONS	THIS DRAWING CONTAINS INFORMATION THAT IS PROPRIETARY TO MOLEX INCORPORATED AND SHOULD NOT BE USED WITHOUT WRITTEN PERMISSION.				SIZE <b>B</b>		