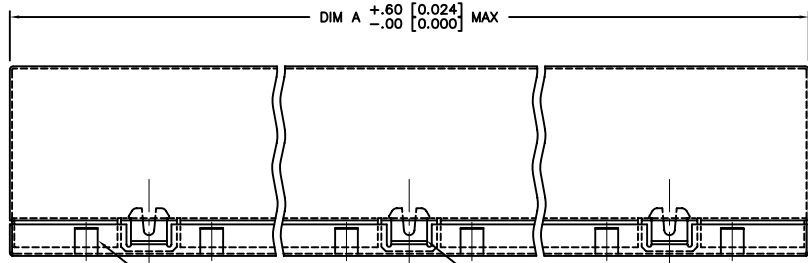
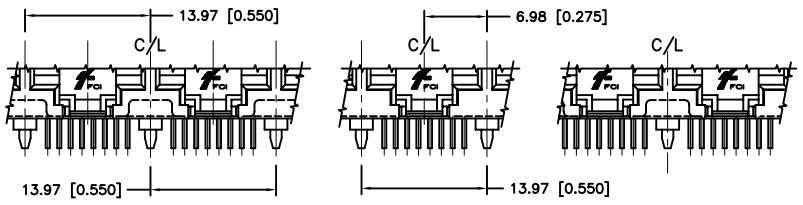
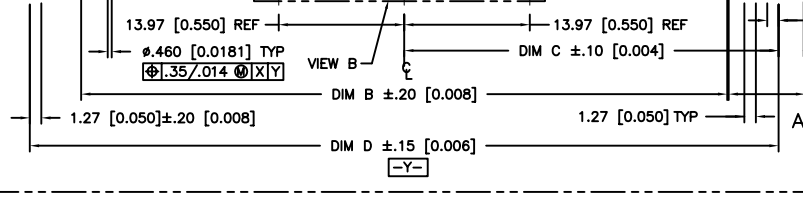
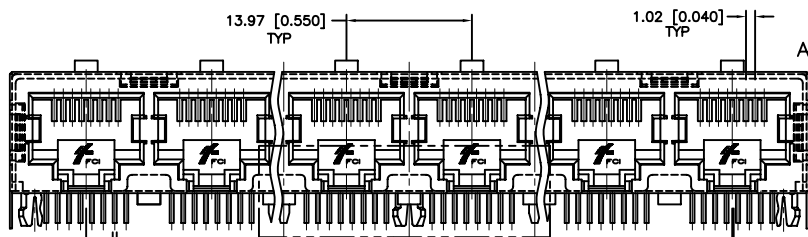


PRODUCT NO.  
SEE TABLE



GROUNDING TAB  
SEE SHEET 6 FOR  
LOCATING CONFIGURATION

LATCHING MECHANISM

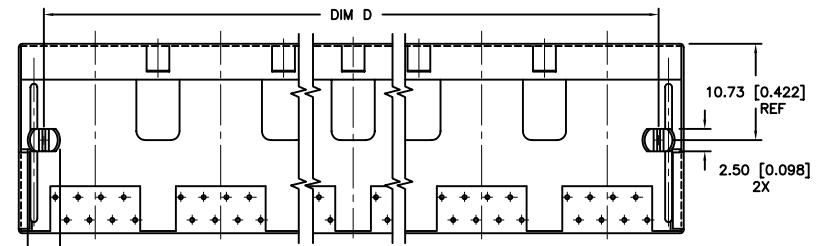


FOR PORT NO. 4,6,8,10,12

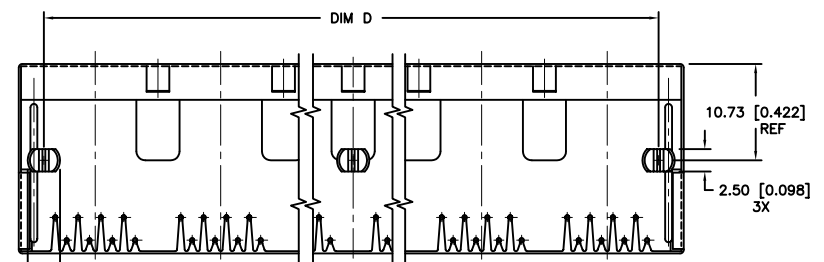
FOR PORT NO. 3,5,7,9,11

FOR 2-PORT

VIEW B  
(CENTER PEG OMITTED FOR CLARITY,  
-XXXM, -XXXMLF PRODUCT ONLY)



VIEW C-C  
-XXXNLF PRODUCT ONLY (WITHOUT CENTER PEG - SEE NOTE 8)



VIEW C-C  
-XXXM, -XXXMLF PRODUCT ONLY (WITH CENTER PEG - SEE NOTE 7)

- 1.27 [0.050] -X02M THRU -X12M & -X02NLF THRU -X12NLF
- 2.79 [0.110]±.20 [0.008] -X02MLF THRU -X12MLF
- X01M, -X01AM, -X01A, -X01NLF & -X01ANLF
- X01MLF, -X01AMLF & -X01ALF
- 8.51 [0.335] -X02M THRU -X12M & -X02NLF THRU -X12NLF
- 7.87 [0.310] -X02MLF THRU -X12MLF
- X01M, -X01AM, -X01A, -X01NLF & -X01ANLF
- X01MLF, -X01AMLF, -X01ALF

|             |          |                                       |          |        |                        |                |   |
|-------------|----------|---------------------------------------|----------|--------|------------------------|----------------|---|
| mat'l. code |          | tolerances unless otherwise specified |          |        |                        | CUSTOMER COPY  | <br>www.fciconnect.com                                  |
| ltr         | ecn no   | dr                                    | date     | linear | .x±.3/.xx ±.01         |                |   |
| J           | T70374   | OTA                                   | 9/8/97   |        | .xx±.13/.xxx ±.005     | projection<br> | title<br>R/A 8 POS GANG JACK ASSY<br>SHIELDED, SNAP PEG |
| K           | T70567   | RGD                                   | 7/16/98  |        | .xxx±.051/.xxxx ±.0020 |                |   |
| L           | T00315   | CSP                                   | 11/9/00  | angles | 0° ±2'                 | MM/INCH<br>    | product family MOD JACK<br>size/ dwg no                 |
| M           | V21065   | LP                                    | 8/23/02  | dr     | KCHOU 3/18/93          |                |   |
| N           | T03-0059 | GARY                                  | 02/18/03 | engr   | TC 3/18/93             | scale<br>1:1   | A<br>94910  |
| P           | T03-0106 | GARY                                  | 03/31/03 | chr    | JTSAO 3/18/93          |                |   |
| R           | M05-0067 | MHT                                   | 4/8/05   | appd   | JTSAO 3/18/93          |                | code<br>-   |
| sheet index | revision | R                                     | R        | R      | R                      | R              | sheet<br>1 of 6   |
|             | sheet    | 1                                     | 1        | 3      | 4                      | 5              | 6   |

Tous droits strictement reserves. Reproduction ou communication a des tiers interdite sous quelque forme que ce soit sans autorisation ecrite du proprietaire. Propriete de c FCI. Droits de reproduction FCI.

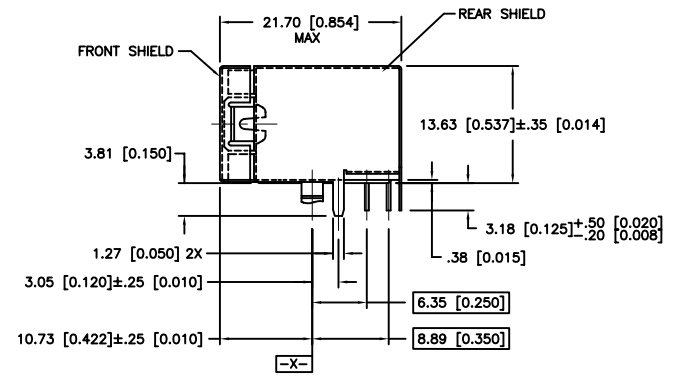
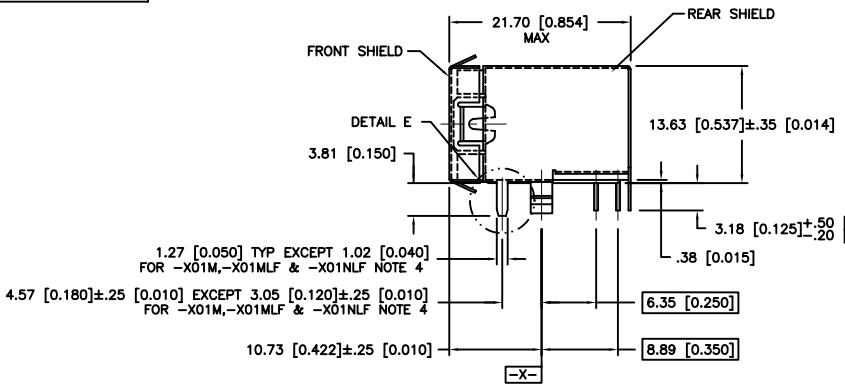
FCI

All rights strictly reserved. Reproduction or issue to third parties in any form whatever is not permitted without written authority from the proprietor. Property of FCI. Copyright FCI.

Tous droits strictement reserves. Reproduction ou communication a des tiers interdite sous quelque forme que ce soit sans autorisation ecrite du proprietaire. Propriete de c FCI. Droits de reproduction FCI.

All rights strictly reserved. Reproduction or issue to third parties in any form whatever is not permitted without written authority from the proprietor. Property of FCI. Copyright FCI.

PRODUCT NO  
SEE TABLE

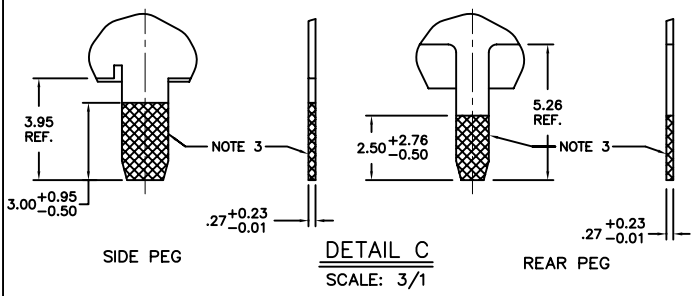
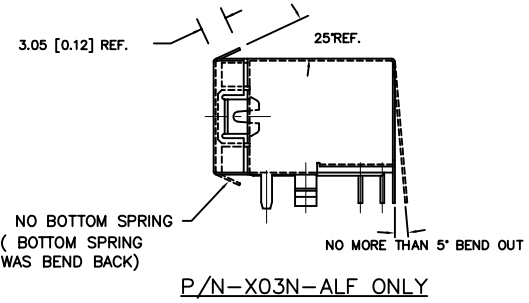


VIEW A-A

NOTE 5

NOTES:

1. RECOMMENDED P.C.B. THICKNESS 1.60 [0.063].
2. CONTACTS: PHOS BRONZE ALLOY UNS-C51000, Ø 0.460 [0.0181] ROUND WIRE, PLATING SEE TABLE.
- ③ SHIELDING MAT'L: .25 [0.010] THICK BRASS ALLOY.  
SHIELDING PLATING: FOR 94910-XXXM: 2.54µM/100u" MIN BRIGHT TIN-LEAD PLATED OVER 0.76µM/30u" MIN NICKEL UNDERPLATING PER BUS-15-002/M.  
LEAD FREE OPTION:  
FOR 94910-XXXNLF: 0.76µM/30u" MIN NICKEL PLATING, WITH SELECTIVE TIN ON SOLDER TAILS, SEE DETAIL E.  
SHIELDING PLATING: FOR 94910-XXXMLF: 2.54µM/100u" MIN BRIGHT PURE TIN PLATED OVER 0.76µM/30u" MIN NICKEL UNDERPLATING PER BUS-15-002/M.
- ④ SPECIALLY FOR ONE-PORT P/N 94910-X01M, -X01MLF & 94910-X01NLF ONLY. SOLDER TAIL OF SHIELD IS 1.02 [0.040] WIDE, DISTANCE FROM PCB PEG TO THE SOLDER TAIL IS 3.05 [0.120].
- ⑤ SPECIALLY FOR ONE-PORT P/N 94910-X01AM, -X01AMLF, 94910-X01A, -X01ALF & 94910-X01ANLF ONLY. SOLDER TAIL OF SHIELD IS 1.27 [0.050] WIDE, DISTANCE FROM PCB PEG TO THE SOLDER TAIL IS 3.05 [0.120].
6. ALL DIMENSIONS IN MILLIMETERS/INCHES.
- ⑦ CENTER PEG FOR 8-PORTS AND ABOVE, (-XXXM, -XXXMLF PRODUCT ONLY).
- ⑧ NO CENTER PEG AVAILABLE ON -XXXNLF PRODUCT.
- ⑨ 'LF' SUFFIX AT THE END OF PART NUMBER IS LEAD FREE.
10. THE HOUSING WILL WITHSTAND EXPOSURE TO 260°C PEAK TEMPERATURE FOR 15 SECONDS IN A WAVE SOLDER APPLICATION WITH A 1.5mm MINIMUM THICK CIRCUIT BOARD. SEE APPLICATION NOTES/PROCEDURES IF THEY ARE AVAILABLE.
11. THIS PRODUCT MEETS EUROPEAN UNION DIRECTIVES AND OTHER COUNTRY REGULATION AS DESCRIBED IN GS-22-008
- ⑫ PLATING OPTIONS:  
MAY BE EITHER GOLD OR GXT PLATED AT MANUFACTURER'S OPTION.



|             |                |    |      |                                       |                       |               |   |
|-------------|----------------|----|------|---------------------------------------|-----------------------|---------------|---|
| mat'l. code |                |    |      | tolerances unless otherwise specified |                       | CUSTOMER COPY | <br>www.fciconnect.com                      |
| ltr         | ecn no         | dr | date | linear                                | .X±.3/XX ±.01         |               |   |
| R           |                |    |      |                                       | .XX±.13/XXX ±.005     |               | R/A 8 POS GANG JACK ASSY SHIELDED, SNAP PEG |
|             |                |    |      | angles                                | .XXX±.051/XXXX ±.0020 |               |   |
|             |                |    |      | dr                                    | 0° ±2°                | scale         | size/ dwg no                                |
|             |                |    |      | enr                                   | KCHOU 3/18/93         |               |   |
|             |                |    |      | chr                                   | TC 3/18/93            | 94910         | code  |
|             |                |    |      | appd                                  | JTSAO 3/18/93         |               |   |
| sheet index | revision sheet |    |      |                                       |                       |               |   |

| PRODUCT No. | No. OF PORTS | DIM A $\begin{smallmatrix} +.60 \\ -0 \end{smallmatrix}$ [0.024] | DIM B          | DIM C $\pm 1.10$ [0.004] | DIM D $\pm 1.15$ [0.006] | GROUND LEG NO. ON THE BACK (VIEW B) | NOTE   |
|-------------|--------------|--|----------------|--------------------------|--------------------------|-------------------------------------|--------|
| 94910-X01M  | 1            | 15.74 [0.620]  | -----          | 5.72 [0.225]             | 11.43 [0.450]            | NONE                                | NOTE 4 |
| 94910-X01AM | 1            | 15.74 [0.620]  | -----          | 5.72 [0.225]             | 11.43 [0.450]            | NONE                                | NOTE 5 |
| 94910-X02M  | 2            | 30.98 [1.220]  | 13.97 [0.550]  | 12.70 [0.500]            | 25.40 [1.000]            | 1                                   | ----   |
| 94910-X03M  | 3            | 44.95 [1.770]  | 27.94 [1.100]  | 19.69 [0.775]            | 39.37 [1.550]            | 2                                   | ----   |
| 94910-X04M  | 4            | 58.92 [2.320]  | 41.91 [1.650]  | 26.67 [1.050]            | 53.34 [2.100]            | 3                                   | ----   |
| 94910-X05M  | 5            | 72.89 [2.870]  | 55.88 [2.200]  | 33.66 [1.325]            | 67.31 [2.650]            | 2                                   | ----   |
| 94910-X06M  | 6            | 86.86 [3.420]  | 69.85 [2.750]  | 40.64 [1.600]            | 81.28 [3.200]            | 3                                   | ----   |
| 94910-X07M  | 7            | 100.83 [3.970]   | 83.82 [3.300]  | 47.63 [1.875]            | 95.25 [3.750]            | 2                                   | ----   |
| 94910-X08M  | 8            | 114.80 [4.520]   | 97.79 [3.850]  | 54.61 [2.150]            | 109.22 [4.300]           | 3                                   | ----   |
| 94910-X09M  | 9            | 128.77 [5.070]   | 111.76 [4.400] | 61.60 [2.425]            | 123.19 [4.850]           | 2                                   | ----   |
| 94910-X10M  | 10           | 142.74 [5.620]   | 125.73 [4.950] | 68.58 [2.700]            | 137.16 [5.400]           | 3                                   | ----   |
| 94910-X11M  | 11           | 156.71 [6.170]   | 139.70 [5.500] | 75.57 [2.975]            | 151.13 [5.950]           | 2                                   | ----   |
| 94910-X12M  | 12           | 170.68 [6.720]   | 153.67 [6.050] | 82.55 [3.250]            | 165.10 [6.500]           | 3                                   | ----   |

| PLATING CODE X | PLATING (12)      |
|----------------|-------------------|
| 0              | .76uM/30u" G.X.T. |
| 1              | .38uM/15u" GOLD   |
| 3              | .76uM/30u" GOLD   |
| 5              | 1.27uM/50u" GOLD  |


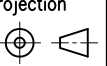
| PRODUCT No.   | No. OF PORTS | DIM A $\begin{smallmatrix} +.60 \\ -0 \end{smallmatrix}$ [0.024] | DIM B          | DIM C $\pm 1.10$ [0.004] | DIM D $\pm 1.15$ [0.006] | GROUND LEG NO. ON THE BACK (VIEW B) | NOTE   |
|---------------|--------------|--|----------------|--------------------------|--------------------------|-------------------------------------|--------|
| 94910-X01MLF  | 1            | 15.74 [0.620]  | -----          | 5.72 [0.225]             | 11.43 [0.450]            | NONE                                | NOTE 4 |
| 94910-X01AMLF | 1            | 15.74 [0.620]  | -----          | 5.72 [0.225]             | 11.43 [0.450]            | NONE                                | NOTE 5 |
| 94910-X02MLF  | 2            | 30.98 [1.220]  | 13.97 [0.550]  | 12.70 [0.500]            | 25.40 [1.000]            | 1                                   | ----   |
| 94910-X03MLF  | 3            | 44.95 [1.770]  | 27.94 [1.100]  | 19.69 [0.775]            | 39.37 [1.550]            | 2                                   | ----   |
| 94910-X04MLF  | 4            | 58.92 [2.320]  | 41.91 [1.650]  | 26.67 [1.050]            | 53.34 [2.100]            | 3                                   | ----   |
| 94910-X05MLF  | 5            | 72.89 [2.870]  | 55.88 [2.200]  | 33.66 [1.325]            | 67.31 [2.650]            | 2                                   | ----   |
| 94910-X06MLF  | 6            | 86.86 [3.420]  | 69.85 [2.750]  | 40.64 [1.600]            | 81.28 [3.200]            | 3                                   | ----   |
| 94910-X07MLF  | 7            | 100.83 [3.970]   | 83.82 [3.300]  | 47.63 [1.875]            | 95.25 [3.750]            | 2                                   | ----   |
| 94910-X08MLF  | 8            | 114.80 [4.520]   | 97.79 [3.850]  | 54.61 [2.150]            | 109.22 [4.300]           | 3                                   | ----   |
| 94910-X09MLF  | 9            | 128.77 [5.070]   | 111.76 [4.400] | 61.60 [2.425]            | 123.19 [4.850]           | 2                                   | ----   |
| 94910-X10MLF  | 10           | 142.74 [5.620]   | 125.73 [4.950] | 68.58 [2.700]            | 137.16 [5.400]           | 3                                   | ----   |
| 94910-X11MLF  | 11           | 156.71 [6.170]   | 139.70 [5.500] | 75.57 [2.975]            | 151.13 [5.950]           | 2                                   | ----   |
| 94910-X12MLF  | 12           | 170.68 [6.720]   | 153.67 [6.050] | 82.55 [3.250]            | 165.10 [6.500]           | 3                                   | ----   |

Tous droits strictement reserves. Reproduction ou communication a des tiers interdite sous quelque forme que ce soit sans autorisation ecrite du proprietaire. Propriete de c FCI. Droits de reproduction FCI.

**A**  
**FCI**

All rights strictly reserved. Reproduction or issue to third parties in any form whatever is not permitted without written authority from the proprietor. Property of FCI. Copyright FCI.

**B**

|             |                |    |      |                                       |                                  |   |   |
|-------------|----------------|----|------|---------------------------------------|----------------------------------|---|---|
| mat'l. code |                |    |      | tolerances unless otherwise specified |                                  | CUSTOMER COPY   | <br>www.fciconnect.com |
| ltr         | ecn no         | dr | date | linear                                | .X $\pm$ .3/.XX $\pm$ .01        | projection  |   |
| R           |                |    |      |                                       | .XX $\pm$ .13/.XXX $\pm$ .005    |  | title   |
|             |                |    |      | angles                                | .XXX $\pm$ .051/.XXX $\pm$ .0020 |   | R/A 8 POS GANG JACK ASSY SHIELDED, SNAP PEG   |
|             |                |    |      | dr                                    | 0' $\pm$ 2'                      | MM/INCH   | product family MOD JACK   |
|             |                |    |      | engr                                  | KCHOU 5/4/94                     | scale   | code  |
|             |                |    |      | chr                                   | TC 5/4/94                        | 1:1   | size  dwg no  |
|             |                |    |      | appd                                  | JTSAO 5/4/94                     | A   | 94910   |
| sheet index | revision sheet |    |      |                                       |                                  |   | sheet 3 of  |

**A**

**B**

Tous droits strictement reserves. Reproduction ou communication a des tiers interdite sous quelque forme que ce soit sans autorisation ecrite du proprietaire. Propriete de c FCI. Droits de reproduction FCI.



All rights strictly reserved. Reproduction or issue to third parties in any form whatever is not permitted without written authority from the proprietor. Property of FCI. Copyright FCI.

1 | 2

3 |

4

| PRODUCT No.    | No. OF PORTS | DIM A $\begin{smallmatrix} +.60 \\ -0 \end{smallmatrix}$ [0.024] | DIM B          | DIM C $\pm 1.10$ [0.004] | DIM D $\pm 1.15$ [0.006] | GROUND LEG NO. ON THE BACK (VIEW B) | NOTE   |
|----------------|--------------|--|----------------|--------------------------|--------------------------|-------------------------------------|--------|
| 94910-X01NLF   | 1            | 15.74 [0.620]  | -----          | 5.72 [0.225]             | 11.43 [0.450]            | NONE                                | NOTE 4 |
| 94910-X01ANLF  | 1            | 15.74 [0.620]  | -----          | 5.72 [0.225]             | 11.43 [0.450]            | NONE                                | NOTE 5 |
| 94910-X02NLF   | 2            | 30.98 [1.220]  | 13.97 [0.550]  | 12.70 [0.500]            | 25.40 [1.000]            | 1                                   | ----   |
| 94910-X03NLF   | 3            | 44.95 [1.770]  | 27.94 [1.100]  | 19.69 [0.775]            | 39.37 [1.550]            | 2                                   | ----   |
| 94910-X03N-ALF | 3            | 44.95 [1.770]  | 27.94 [1.100]  | 19.69 [0.775]            | 39.37 [1.550]            | 2                                   | ----   |
| 94910-X04NLF   | 4            | 58.92 [2.320]  | 41.91 [1.650]  | 26.67 [1.050]            | 53.34 [2.100]            | 3                                   | ----   |
| 94910-X05NLF   | 5            | 72.89 [2.870]  | 55.88 [2.200]  | 33.66 [1.325]            | 67.31 [2.650]            | 2                                   | ----   |
| 94910-X06NLF   | 6            | 86.86 [3.420]  | 69.85 [2.750]  | 40.64 [1.600]            | 81.28 [3.200]            | 3                                   | ----   |
| 94910-X07NLF   | 7            | 100.83 [3.970]   | 83.82 [3.300]  | 47.63 [1.875]            | 95.25 [3.750]            | 2                                   | ----   |
| 94910-X08NLF   | 8            | 114.80 [4.520]   | 97.79 [3.850]  | 54.61 [2.150]            | 109.22 [4.300]           | 3                                   | ----   |
| 94910-X09NLF   | 9            | 128.77 [5.070]   | 111.76 [4.400] | 61.60 [2.425]            | 123.19 [4.850]           | 2                                   | ----   |
| 94910-X10NLF   | 10           | 142.74 [5.620]   | 125.73 [4.950] | 68.58 [2.700]            | 137.16 [5.400]           | 3                                   | ----   |
| 94910-X11NLF   | 11           | 156.71 [6.170]   | 139.70 [5.500] | 75.57 [2.975]            | 151.13 [5.950]           | 2                                   | ----   |
| 94910-X12NLF   | 12           | 170.68 [6.720]   | 153.67 [6.050] | 82.55 [3.250]            | 165.10 [6.500]           | 3                                   | ----   |

| PLATING CODE X | PLATING (12)      |
|----------------|-------------------|
| 0              | .76uM/30u" G.X.T. |
| 1              | .38uM/15u" GOLD   |
| 3              | .76uM/30u" GOLD   |
| 5              | 1.27uM/50u" GOLD  |

A

A

B

B

|             |        |                |      |                                       |                                  |               |             |   |  |
|-------------|--------|----------------|------|---------------------------------------|----------------------------------|---------------|-------------|---|--|
| mat'l. code |        | -              |      | tolerances unless otherwise specified |                                  | CUSTOMER COPY |             | <br>www.fciconnect.com                      |  |
| ltr         | ecn no | dr             | date | linear                                | .XX $\pm$ .13/.XXX $\pm$ .005    |               | projection  | title                                       |  |
| R           |        |                |      |                                       | .XXX $\pm$ .051/.XXX $\pm$ .0020 |               |             | R/A 8 POS GANG JACK ASSY SHIELDED, SNAP PEG |  |
|             |        |                |      | angles                                | 0° $\pm$ 2°                      |               | <br>MM/INCH | product family MOD JACK                     |  |
|             |        |                |      | dr                                    | KCHOU                            | 5/4/94        |             | size  dwg no                                |  |
|             |        |                |      | enr                                   | TC                               | 5/4/94        | A 94910     |   |  |
|             |        |                |      | chr                                   | JTSAO                            | 5/4/94        | code        |   |  |
|             |        |                |      | appd                                  | JTSAO                            | 5/4/94        | sheet       |   |  |
| sheet index |        | revision sheet |      |                                       |                                  | scale 1:1     |             | 4 of  |  |

1 | 2

3 |

4

ACAD

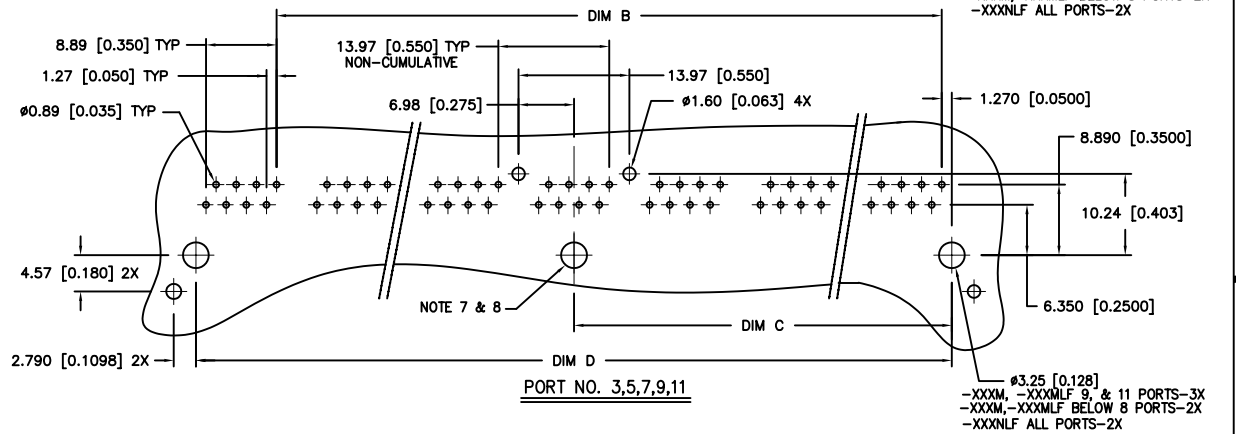
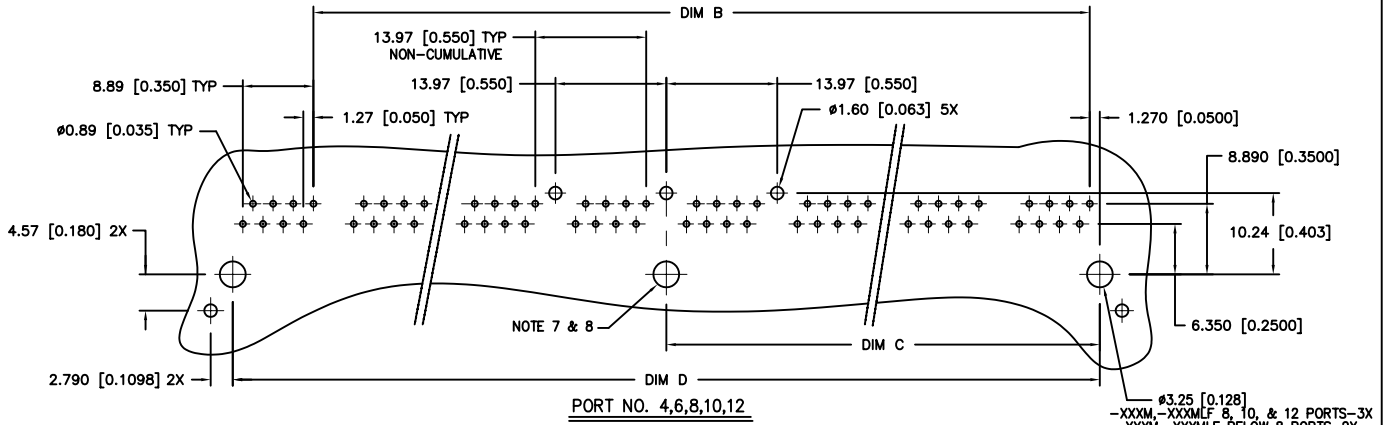
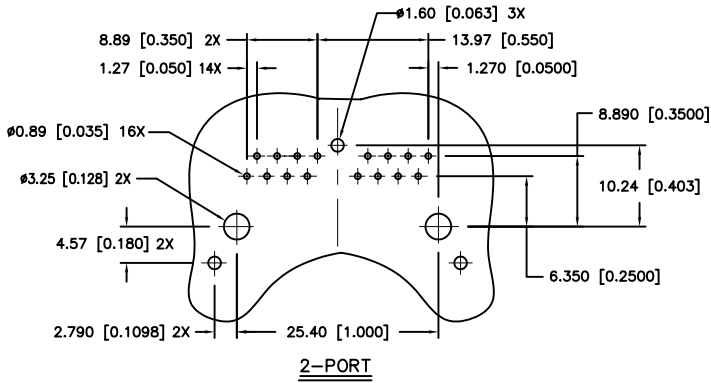
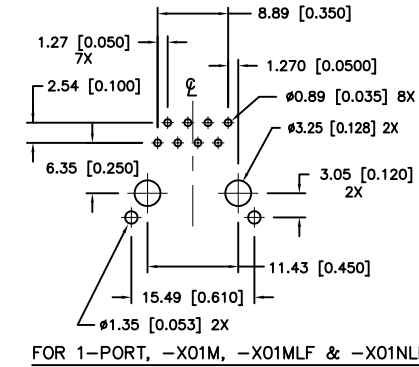
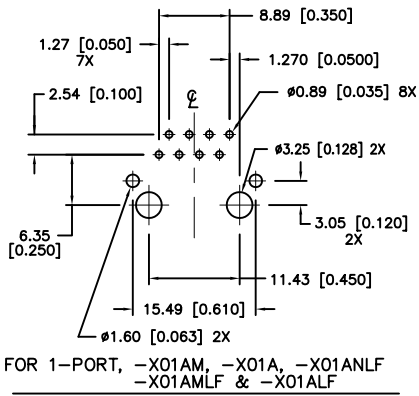
PDM: Rev:R

STATUS:Released

cage code  
22526

Printed: Jan 05, 2006

PRODUCT NO.  
SEE TABLE



RECOMMENDED P.C.B LAYOUT

|             |                |    |      |                                       |                       |        |              |               |                         |   |       |
|-------------|----------------|----|------|---------------------------------------|-----------------------|--------|--------------|---------------|-------------------------|---|-------|
| mat'l. code |                |    |      | tolerances unless otherwise specified |                       |        |              | CUSTOMER COPY |                         | <br>www.fciconnect.com                      |       |
| ltr         | ecn no         | dr | date | linear                                | .X±.3/.XX ±.01        |        |              | projection    |                         | title                                       |       |
| R           |                |    |      |                                       | .XX±.13/.XXX ±.005    |        |              |               |                         | R/A 8 POS GANG JACK ASSY SHIELDED, SNAP PEG |       |
|             |                |    |      | angles                                | .XXX±.051/.XXX ±.0020 |        |              |               | product family MOD JACK |   | code  |
|             |                |    |      | dr                                    | KCHOU                 | 5/4/94 | size/ dwg no |               | -                       |   |       |
|             |                |    |      | enr                                   | TC                    | 5/4/94 | A            |               | 94910                   |   | sheet |
|             |                |    |      | chr                                   | JTSAO                 | 5/4/94 | scale        |               | 1:1                     |   | 5 of  |
|             |                |    |      | appd                                  | JTSAO                 | 5/4/94 | cage code    |               | 22526                   |   |       |
| sheet index | revision sheet |    |      |                                       |                       |        |              |               |                         |   |       |

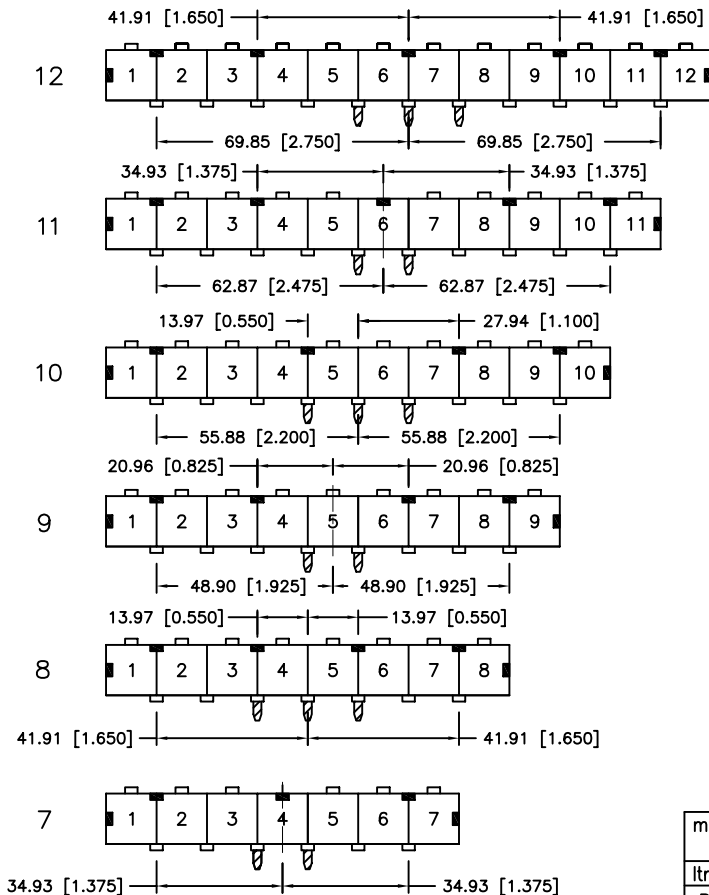
Tous droits strictement reserves. Reproduction ou communication a des tiers interdite sous quelque forme que ce soit sans autorisation ecrite du proprietaire. Propriete de c FCI. Droits de reproduction FCI.

All rights strictly reserved. Reproduction or issue to third parties in any form whatever is not permitted without written authority from the proprietor. Property of FCI. Copyright FCI.

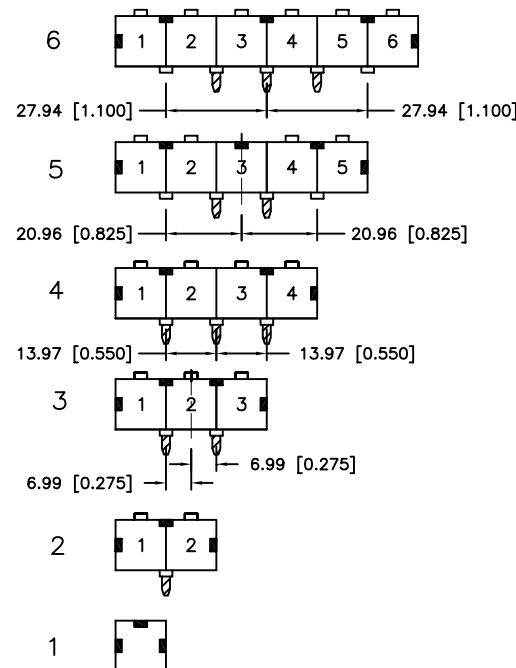
# LATCHING AND GROUNDING TAB LOCATING CONFIGURATION

INDICATES LATCHING TAB (SEE SHEET 1 )  
 INDICATES GROUNDING TAB ON THE FRONT OF PRODUCT (SEE SHEET 1 )  
 INDICATES GROUNDING LEG ON THE BACK OF PRODUCT (VIEW B)

## PORT NUMBERS



## PORT NUMBERS



Tous droits strictement reserves. Reproduction ou communication a des tiers interdite sous quelque forme que ce soit sans autorisation ecrite du proprietaire. Propriete de c FCI. Droits de reproduction FCI.

All rights strictly reserved. Reproduction or issue to third parties in any form whatever is not permitted without written authority from the proprietor. Property of FCI. Copyright FCI.

|             |                |    |      |                                       |                       |               |              |   |  |
|-------------|----------------|----|------|---------------------------------------|-----------------------|---------------|--------------|---|--|
| mat'l. code |                | -  |      | tolerances unless otherwise specified |                       | CUSTOMER COPY |              | <br>www.fciconnect.com                      |  |
| ltr         | ecn no         | dr | date | linear                                | .XX±.13/XXX ±.005     |               | projection   | title                                       |  |
| R           |                |    |      |                                       | .XXX±.051/XXXX ±.0020 |               |              | R/A 8 POS GANG JACK ASSY SHIELDED, SNAP PEG |  |
|             |                |    |      | angles                                | 0° ±2°                |               | <br>MM/INCH  | product family MOD JACK                     |  |
|             |                |    |      | dr                                    | KCHOU                 | 5/4/94        |              | code  |  |
|             |                |    |      | enr                                   | TC                    | 5/4/94        | size  dwg no |   |  |
|             |                |    |      | chr                                   | JTSAO                 | 5/4/94        | A            |   |  |
|             |                |    |      | appd                                  | JTSAO                 | 5/4/94        | 94910        |   |  |
| sheet index | revision sheet |    |      |                                       |                       |               |              |   |  |