

4

3

2

1

THIS DRAWING IS UNPUBLISHED.



RELEASED FOR PUBLICATION

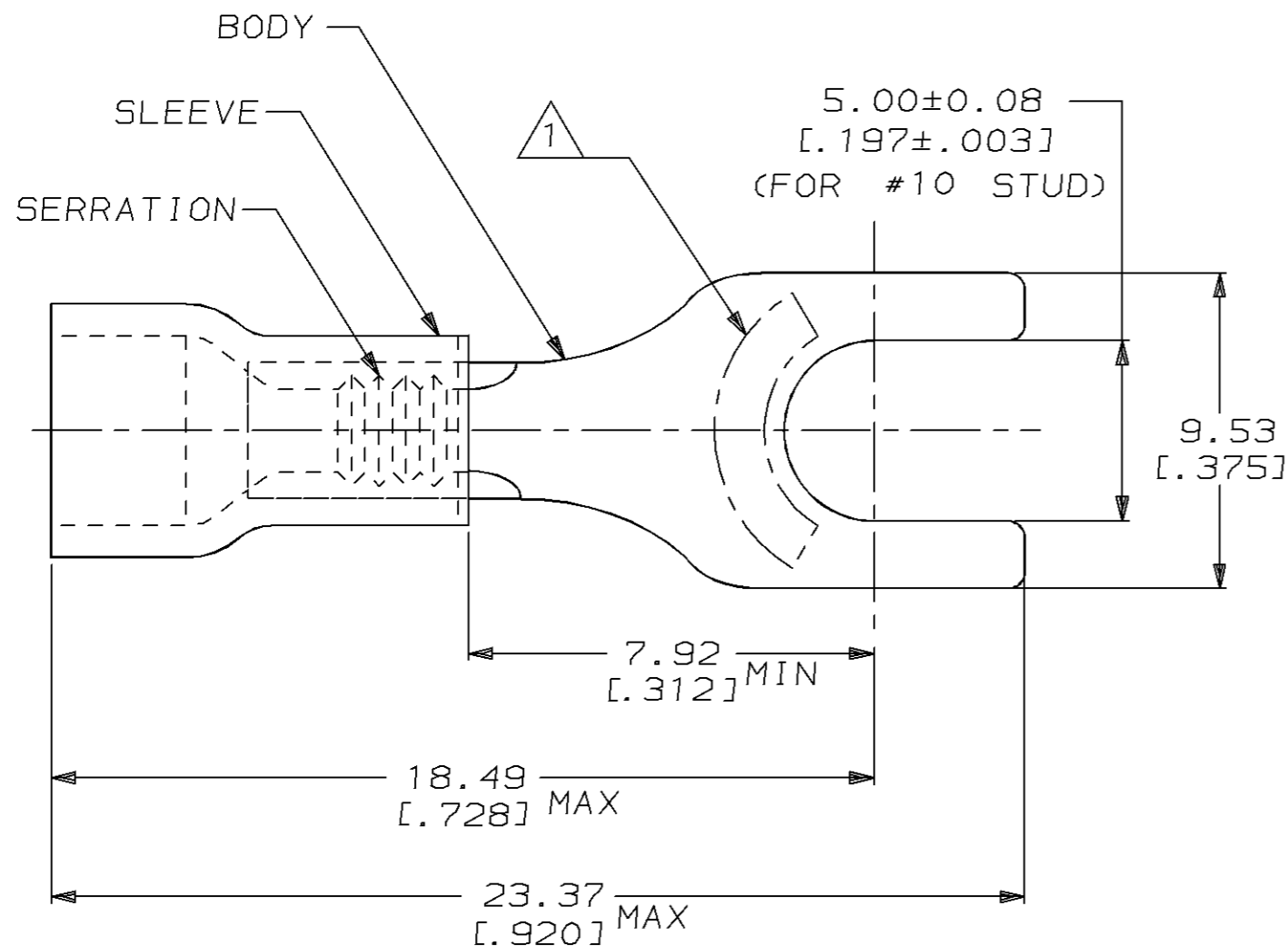
,19

© COPYRIGHT 19

BY AMP INCORPORATED. ALL RIGHTS RESERVED.

LOC	DIST	REVISIONS					
		P	LTR	DESCRIPTION	DATE	DWN	APVD
G	14		K	OBS 2--4 / 0L20-0121-96	13DEC96	ME	BB

AMP WIRE RANGE	 E13288	 LR7189 Certified
- - SOLID OR STRANDED	- - SOLID OR STRANDED	- - SOLID OR STRANDED



- △ 1 STAMP AMP 22-18* APPROX AS SHOWN
22-16 TERMINALS ARE STAMPED 22-18 IN
ACCORDANCE WITH MILITARY SPEC MIL-T-7928
COMMERCIAL WIRE RANGE IS 22-16
2. WIRE INSUL DIA, 2.67 TO 3.56 [.105 TO .140]
3. TONGUE MATL THK, 0.79 ± 0.05 [.031 ± .002]
- △ 4 REPLACED BY 2-34156-1

50	LOOSE PIECE, BAG	8-34156-5
5	LOOSE PIECE, BLS	8-34156-4
100	LOOSE PIECE, BOX	8-34156-1
5000	ON TAPE, REEL	2-34156-4
5000	ON TAPE, REEL	2-34156-1
1000	LOOSE PIECE	34156
QTY	PACKAGE TYPE	PART NO

△ 4 OBSOLETE

AMP INCORPORATED
CUSTOMER SERVICE SYSTEMMAX RECOMMENDED OPERATING
TEMPERATURE:
90°C [194°F]THIS DRAWING IS A CONTROLLED DOCUMENT FOR AMP INCORPORATED.
IT IS SUBJECT TO CHANGE AND THE CONTROLLING ENGINEERING
ORGANIZATION SHOULD BE CONTACTED FOR THE LATEST REVISION.DWN
G VINSON 07NOV94CHK
M ELLIS 07NOV94APVD
G NGO 07NOV94

PRODUCT SPEC

APPLICATION SPEC

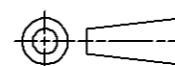
WEIGHT

CUSTOMER DRAWING

AMP Incorporated
Harrisburg, PA 17105-3608NAME
TERMINAL, SPADE,
PLASTI-GRIP™,
WIRE SIZE, 22-16 AWGSIZE
A3CAGE CODE
00779DRAWING NO
C-34156SCALE
6:1SHEET
1 OF 1REV
KFOR ADDITIONAL
PRODUCT INFORMATION OR
COPIES OF DRAWINGS
AND TECHNICAL DOCUMENTSPRODUCT INFORMATION CENTER
1-800-522-6752FOR APPLICATION
TOOLING INFORMATIONTOOLING ASSISTANCE CENTER
1-800-722-1111

FOR ORDER ENTRY

1-800-526-5142

VOLTAGE RATING:
600V MAX
(1000V FIXTURE OR SIGN)CIRCULAR MIL AREA:
0.26mm² - 1.65mm²
[509 - 3260]DIMENSIONS:
mm [in]TOLERANCES UNLESS
OTHERWISE SPECIFIED:

0 PLC	±-
1 PLC	±-
2 PLC	±0.20 [.008]
3 PLC	±-
4 PLC	±-
ANGLES	±-

MATERIAL
BODY, CU PER ASTM B152
SLEEVE, PVC, REDFINISH
-