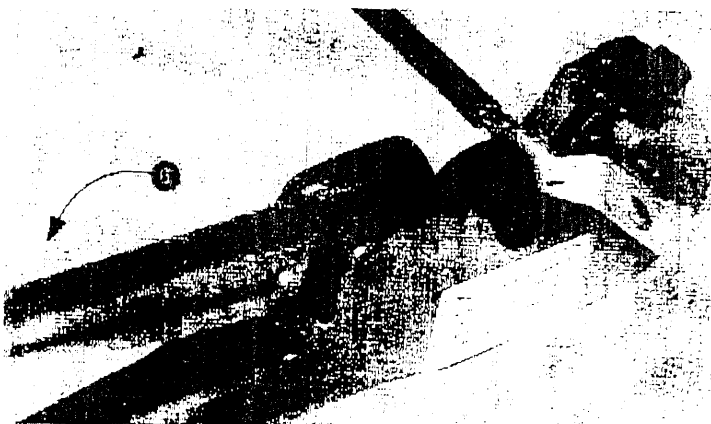
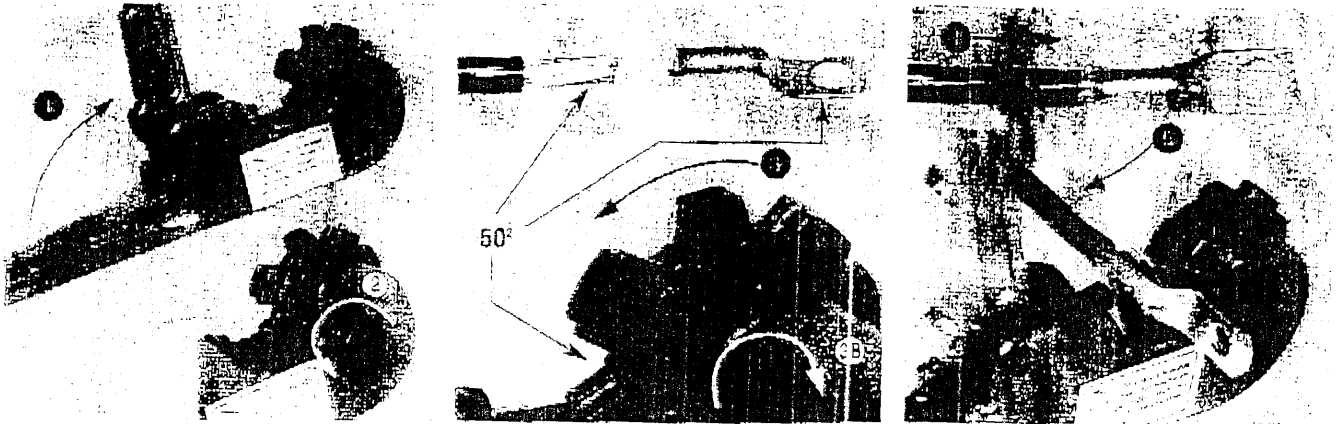




Equipment and tooling

Notice 1242417
Created 02/98

UNILEC : Mechanical handtool with built-in dies



In case of errors during crimping :
unlock the Unilec.



Notice 02/195



SIMEL

Equipment and tooling

Notice 1242417

Created 02/98

UNILEC AMPOWER III : Mechanical handtool with built in dies

FUNCTION

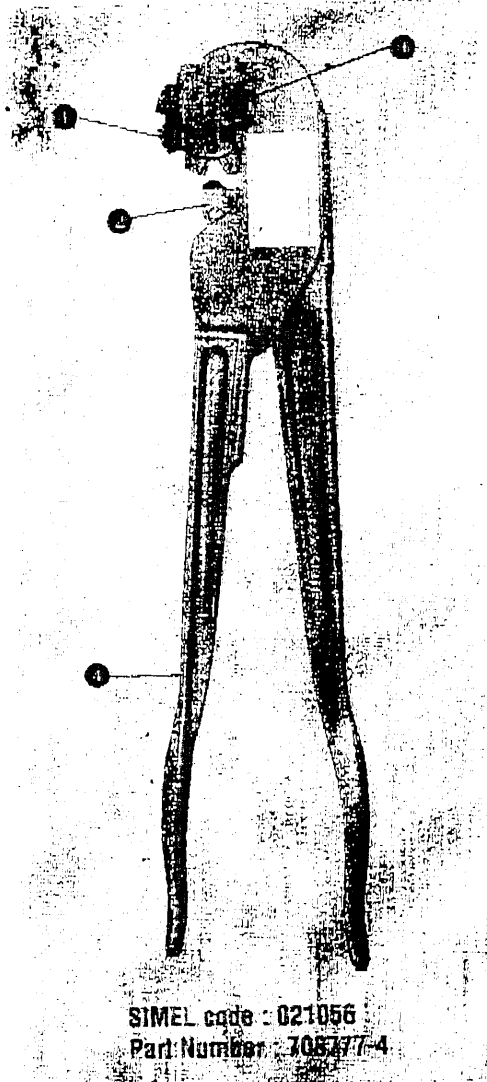
Crimps :

- Ampower III terminals and splices.
- 10 to 70 mm² rigid cable.
- 10 to 50 mm² flexible cable.

DESCRIPTION

Ruggedly built, this tool has proven over the years that it is reliable and easy to use. It is equipped with :

- a recess turret **1** for crimping various barrel diameters ;
- a single punch **2** ;
- a button **3** to select the groove to be used ;
- a moving arm **4** ;
- a non-return system ensures high quality crimping.

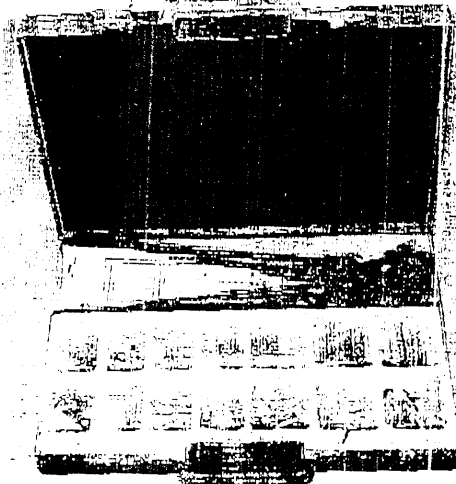


SIMEL code : 021056
Part Number : 705777-4



Tool weight : 2.5 kg.
L x W : 420 x 85 mm.
Packaged individually or in a case (option).

AMP-SIMEL provides after-sales service.



UNILEC kit

This small plastic case provides an easy way of carrying and protecting the UNILEC tool.

It has various compartments for storing the most widely used connectors.

Weight : 2.150 kg.

L x W x H :

450 x 300 x 90 mm.

SIMEL code :

Part Number :

} Consult us.