

SPECIFICATION (APPEARANCE)

(R-0)

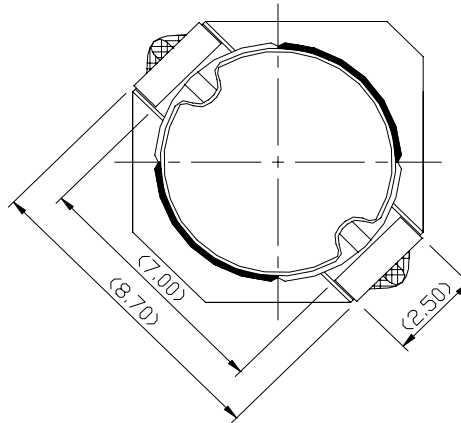
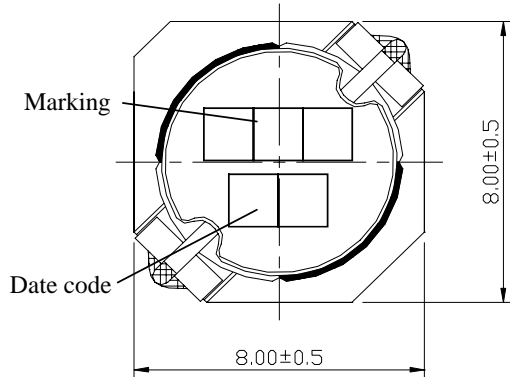
CE151-IN-xxxxS

Part Name

CHIP CHOKE COIL (ELL8[]P TYPE)

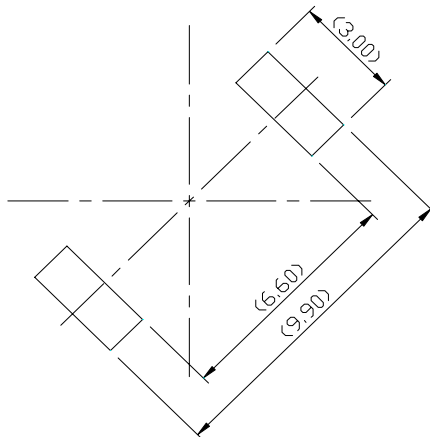
7 - 1

APPEARANCE & DIMENSIONS (UNIT MM)

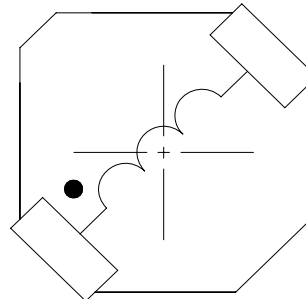


TYPE	HEIGHT (mm)
ELL8TP-B	4.70±0.3

RECOMMENDED LAND PATTERNS (TOP VIEW)



CONNECTIONS (TOP VIEW)



PART NUMBER

PANASONIC'S P/N

E L L 8 P

1 2 3 4

1	Height	T: 5.0 mm (max.)		
2	Inductance	2.7μH: 2R7	22μH: 220	100μH: 101
3	Tolerance	N: ±30%		M: ±20%
4	Customer division			

Date 16-Jul-10

CCBG COIL DEPARTMENT

APPROVED

CHECKED

PREPARED

S.Morimoto

Michael

SPECIFICATION (ELECTRICAL)

(R - 0)

CE151-IN-xxxxxS

Part Name

CHIP CHOKE COIL (ELL8TP-B TYPE)

7 - 2

ELECTRICAL CHARACTERISTICS

CUSTOMER'S PART NUMBER	PANASONIC'S PART NUMBER	INDUCTANCE		DCR (20°C)		*SATURATION RATED CURRENT	*TEMPERATURE RISE CURRENT	MARKING
		NOMINAL [μH]	TOL.	NOMINAL [mΩ]	TOL.	[A]	[A]	
ELL8TP1R2NB	ELL8TP1R2NB	1.2	±30%	4.7	±30%	8.50	8.00	1R2
ELL8TP3R3NB	ELL8TP3R3NB	3.3		13		5.00	4.20	3R3
ELL8TP4R7NB	ELL8TP4R7NB	4.7		14		4.00	4.00	4R7
ELL8TP6R8NB	ELL8TP6R8NB	6.8		18		3.50	3.50	6R8
ELL8TP100MB	ELL8TP100MB	10.0	±20%	25	±20%	3.00	3.00	100
ELL8TP150MB	ELL8TP150MB	15		44		2.30	2.30	150
ELL8TP220MB	ELL8TP220MB	22		55		2.20	2.00	220
ELL8TP330MB	ELL8TP330MB	33		84		1.60	1.60	330
ELL8TP470MB	ELL8TP470MB	47		100		1.40	1.50	470
ELL8TP680MB	ELL8TP680MB	68		140		1.00	1.30	680
ELL8TP101MB	ELL8TP101MB	100		190		0.90	1.10	101
ELL8TP151MB	ELL8TP151MB	150		340		0.70	0.80	151
ELL8TP221MB	ELL8TP221MB	220		480		0.55	0.70	221
ELL8TP331MB	ELL8TP331MB	330		700		0.45	0.57	331
ELL8TP471MB	ELL8TP471MB	470		1000		0.40	0.48	471
ELL8TP681MB	ELL8TP681MB	680		1300		0.30	0.43	681
ELL8TP102MB	ELL8TP102MB	1000		2100		0.25	0.33	102

*Saturation Rated Current :

This DC current which causes a 30% inductance reduction from its nominal value

*Temperature Rise Current :

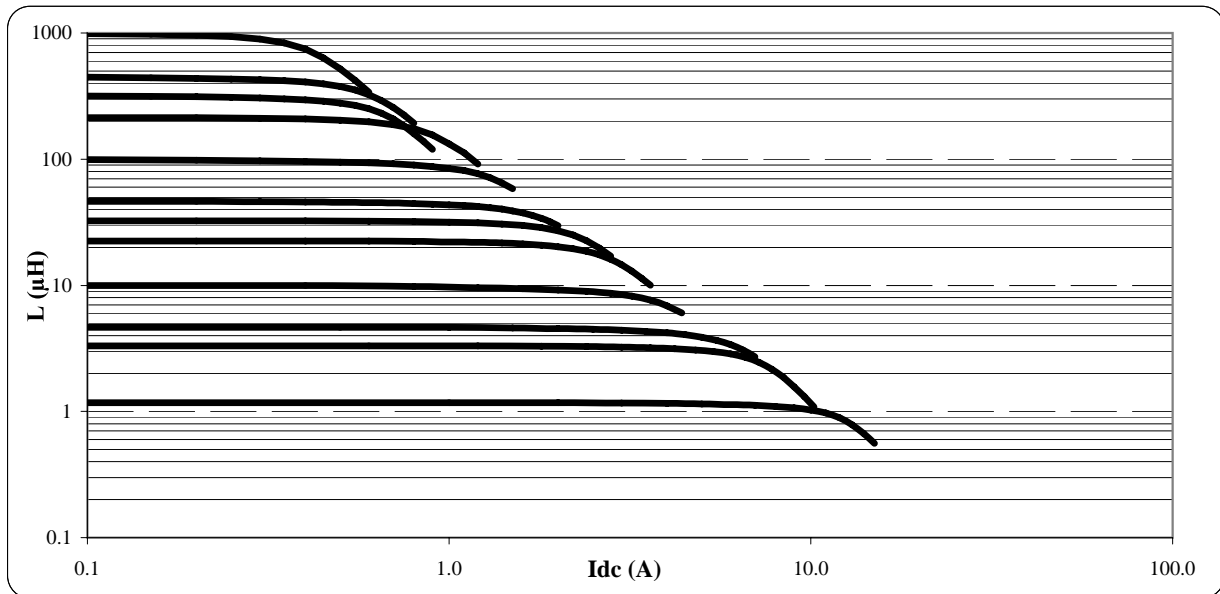
This indicates the value of current when temperature rise dt/t= 40°C (At 20°C).

TEST CONDITION (INDUCTANCE)

100kHz, 0.3Vrms

TYPICAL ELECTRICAL CHARACTERISTICS

INDUCTANCE VS. DC SUPERPOSITION CHARACTERISTICS



Date 16-Jul-10

CCBG COIL DEPARTMENT

APPROVED
S.Morimoto

CHECKED

PREPARED
Michael