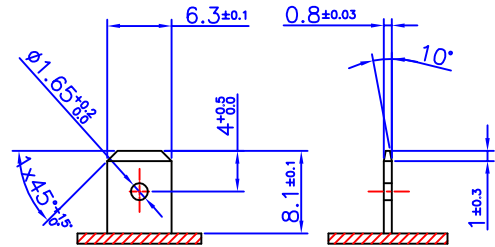
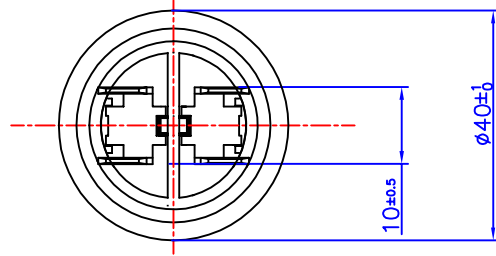
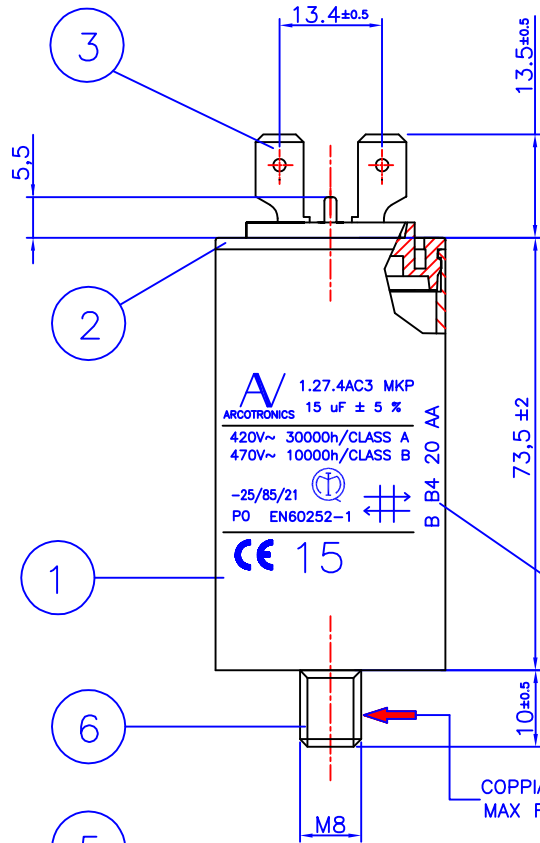


1* EDIZIONE - DATA 20/04/11
 1* EDITION - DATE 20/04/11
 REVISIONE - DATA ./. / ./.
 REVISION - DATE ./. / ./.

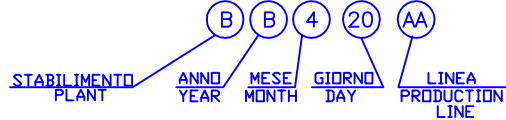
FILE : C274AC35150AA0J 110420

☆ QUOTE CRITICHE
 ☆ CRITICAL DIMENSIONS
 ◇ QUOTE IMPORTANTI
 ◇ IMPORTANT DIMENSIONS



PARTICOLARE FASTON A NORME DIN 46244
 FASTON DETAILS DIN 46244

ESEMPIO CODIFICA DATI DI IDENTIFICAZIONE NELLA TIMBRATURA
 EXEMPLE OF IDENTIFICATION DIGIT IN THE MARKING



COPPIA DI SERRAGGIO
 MAX FIXING TORQUE M8 BOLT 5Nm

6	CODOLO FILETTATO M8x10 IN ALLUMINIO ALUMINIUM BOLT M8x10
5	RONDELLA 8.4 ACC. ZN. DIN 6798 WASHER A 8.4 DIN 6798 WHITE STEEL ZN.
4	DADO M8 ACC. ZN. UNI 5588 DIN 934 NUT M8 UNI 5588 DIN 934 WHITE STEEL ZN.
3	FASTON A NORME DIN 46244 ACC. ST. EL. UNI 50965 FASTON ACCORDING DIN STANDARDS 46244
2	DISCETTO IN PA 66 AUTOEST.VO COLORE BEIGE DECK SELFHESTINGUISH VO PA 66 COLOUR BEIGE
1	CUSTODIA IN PP AUTOEST. V2 COLORE BIANCO RAL 9001-9010 POLIPROPILENE CAN SELFHESTINGUISH V2 COLOUR WHITE RAL 9001-9010
Pos.	MATERIALE

Note	PROGETTISTA : T.Skerlev
KEMET	FEBG LIGHTING AND MOTOR CAPACITORS
Q.I. CONDENSATORE SERIE C.27.4 FAST.DOPPIO. 6.3x0.8 CON CODOLO 15uF OVERALL DIMENSIONS CAP. C.27.4 SERIES Double Faston Execution 6.3x0.8 with bolt 15uF	SCALA INDICATION ONLY
L'uso di questo disegno e' tassativamente limitato allo scopo per cui è stato fornito,in conformità alle condizioni di riferimento	
C274AC35150AA0J	