

# 8800 Thinline Rocker Switches 10A 250Vac



- ▶ Ultra thin rocker switch
- ▶ Ratings up to 15A, 250Vac
- ▶ Single and twin gang
- ▶ Bezel sizes:  
 Single 21 x 9.5  
 Twin 21 x 15.5



**10(6)A 250Vac T100**  
**6(2)A 250Vac T100 5E4 (50,000 Operations)**  
 Inrush 50A to EN60065:1998



**UL CSA 15A 250Vac (Twin unit is 10A 250Vac)**  
**UL CSA 125Vac 1/2hp**  
**UL 100°C, file E45221, CSA file LR10990**

*In house test*

**10A 28Vdc**



**RoHS compliant**

3mm contact gap.  
 Technical data on pages 4 & 5.

**B** BLACK  
**W** WHITE

**H 8800 V A B B 133W**

TERMINAL CODE    FUNCTION CODE    ROCKER CODE    BODY CODE    BODY COLOR    ROCKER COLOR    LEGEND & OPTIONS

## ORDER FORMAT

TERMINAL	FUNCTION		ROCKER
<b>H</b>  4.8 x 0.8		 Switches are ON when pressed over terminal 1	<b>V</b> Curved 
	<b>8800</b>	 ON - OFF Single pole	
		 Switches are ON when pressed over terminals 1 or 3	
<b>T</b>  3.5 x 0.8 Solder	<b>8800 8800</b>	 ON - OFF Twin (Single pole)	



H8800VA  
T8800VA



H8800VA  
T8800VA



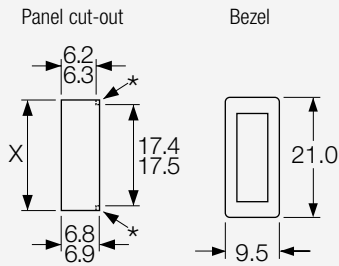
H8800 8800VA  
T8800 8800VA



H8800 8800VA  
T8800 8800VA

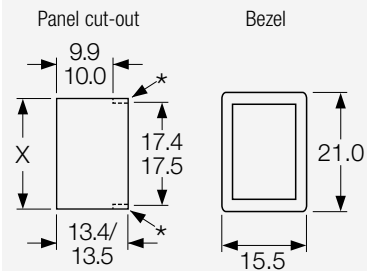
**BODY**

**A Single pole**



\*Optional profile for orientation

**A Single pole - Twin**



\*Optional profile for orientation

Panel thickness	Dim X
0.75-1.24	19.1/19.2
1.25-1.99	19.3/19.4
2.00-3.00	19.7/19.8

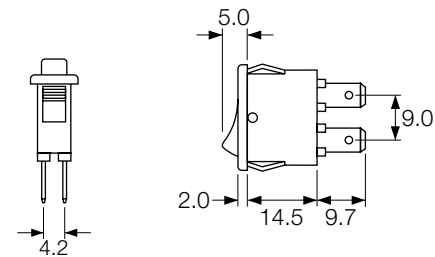
Cut-outs must be punched in the direction of insertion

**OPTIONS**

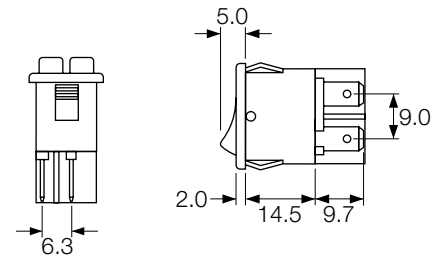
- Finish**  
Matt finish only
- Color**  
Call factory for custom colors.  
A full range is available for large orders
- Legend printing**  
Select from the examples or call the factory for custom legends

**Dimensions (mm)**

**8800VA** (H terminals shown)



**8800 8800VA** (H terminals shown)



**Examples of our range of legend printing**

( ) is legend color B-Black, W-White, R-Red



132(W)



133(W)