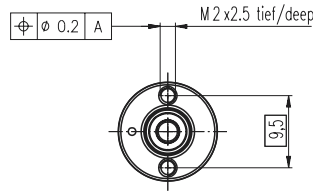
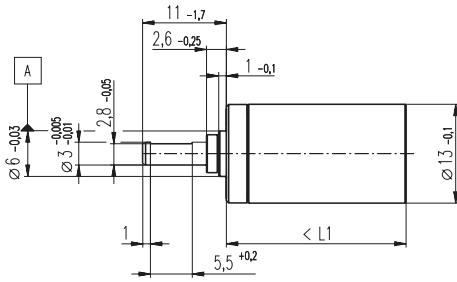


Planetary Gearhead GP 13 A $\varnothing 13$ mm, 0.2 - 0.35 Nm

Metalversion



Technical Data

Planetary Gearhead	straight teeth
Output shaft	stainless steel, hardened
Bearing at output	sleeve bearings*
Radial play, 6 mm from flange	max. 0.055 mm
Axial play	0.02 - 0.10 mm
Max. permissible axial load	8 N
Max. permissible force for press fits	100 N
Recommended input speed	< 8000 rpm
Recommended temperature range	-15 / +100°C
Number of stages	1 2 3 4 5
Max. perm. radial load	
6 mm from flange	8 N 12 N 16 N 20 N 20 N

*Option: ball bearings

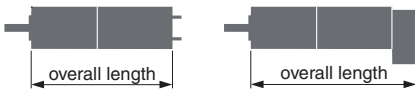
- Stock program
- Standard program
- Special program (on request!)

Order Number

110313	110314	110315	110316	110317
--------	--------	--------	--------	--------

Gearhead Data		110313	110314	110315	110316	110317
1 Reduction		4.1 : 1	17 : 1	67 : 1	275 : 1	1119 : 1
2 Reduction absolute		$57/14$	$3249/196$	$185193/2744$	$10556001/38416$	$601692057/537824$
3 Number of stages		1	2	3	4	5
4 Max. continuous torque at gear output	Nm	0.20	0.20	0.30	0.30	0.35
5 Intermittently permissible torque at gear output	Nm	0.30	0.30	0.45	0.45	0.53
6 Sense of rotation, drive to output		=	=	=	=	=
7 Max. efficiency	%	91	83	75	69	62
8 Weight	g	11	14	17	20	23
9 Average backlash no load	°	1.0	1.2	1.5	1.8	2.0
10 Mass inertia	gcm ²	0.025	0.015	0.015	0.015	0.015
11 Gearhead length L1	mm	16.1	20.0	23.8	27.7	31.5

* for A-max 12 and RE-max 13 is L1 + 0.2 mm



Combination:

+ Motor	Page	+ Tacho / Brake	Page	Overall length [mm]				
RE 13, 1.2 W	53 / 55			35.4	39.3	43.1	47.0	50.8
RE 13, 1.2 W	53	MR Encoder	196-198	42.1	46.0	49.8	53.7	57.5
RE 13, 1.2 W	53	Digital Magnetic Encoder 13	212	43.2	47.1	50.9	54.8	58.6
RE 13, 2.5 W	57 / 59			47.6	51.5	55.3	59.2	63.0
RE 13, 2.5 W	57	MR Encoder	196-198	54.2	58.1	61.9	65.8	69.6
RE 13, 2.5 W	57	Digital Magnetic Encoder 13	212	55.4	59.3	63.1	67.0	70.8
RE 13, 1.5 W	61 / 63			38.5	42.4	46.2	50.1	53.9
RE 13, 1.5 W	63	MR Encoder	196-198	44.1	48.0	51.8	55.7	59.5
RE 13, 1.5 W	63	Digital Magnetic Encoder 13	212	46.5	50.4	54.2	58.1	61.9
RE 13, 3 W	65 / 67			50.7	54.6	58.4	62.3	66.1
RE 13, 3 W	67	MR Encoder	196-198	56.3	60.2	64.0	67.9	71.7
RE 13, 3 W	67	Digital Magnetic Encoder 13	212	58.7	62.6	66.4	70.3	74.1
A-max 12	99/100			37.0	40.9	44.7	48.6	52.4
A-max 12	99	MR Encoder	196	41.4	45.3	49.1	53.0	56.8
RE-max 13	127			36.9	40.8	44.6	48.5	52.3
RE-max 13	127	MR Encoder	196-198	41.2	45.1	48.9	52.8	56.6
RE-max 13	128			47.9	51.8	55.6	59.5	63.3
RE-max 13	128	MR Encoder	196-198	52.2	56.1	59.9	63.8	67.6