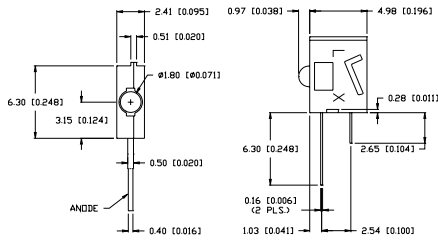


SSF-LXH555XX Series

T-2mm Single, Right Angle Indicator



FEATURES / OPTIONS

- ▶ State-of-the-Art High Brightness LED Chip Technology
- ▶ Small Size - Less Than 2.54mm Wide
- ▶ Side-by-Side Stackable
- ▶ Low Current Power Requirement
- ▶ Choice of Colors
- ▶ Available With Transparent Lens
- ▶ Low Current Style 1-2mA (If)
- ▶ With Internal Resistor for 5V and 12V Operation
- ▶ Color Combinations

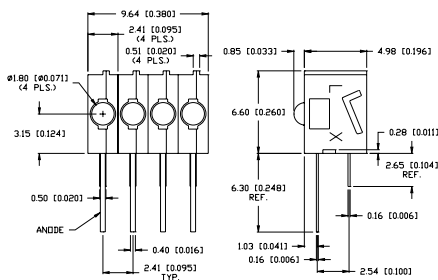
APPLICATIONS / USES

- ▶ Board Level Status Indicators
- ▶ Board Level Fault Indicators
- ▶ Warning/Alarm Lights
- ▶ Circuit Fault/Status Indicators
- ▶ Backlighting Overlays

Lumex Part Number	Die Material	Emitted Color	Peak (nm)	Lens	Operating Current (mA)	Operating TYP. Vf (V)	Brightness TYP. Mcd	@ mA	View Angle° 2θ	Component LED Used
HIGH BRIGHTNESS										
SSF-LXH555SID	AllnGaP	Super High Intensity Red	636	Red Diffused	5-25	2	45	20	60	SSL-LXA227SID
SSF-LXH555SOD	AllnGaP	Super Orange	610	Orange Diffused	5-25	2	45	20	60	SSL-LXA227SOD
SSF-LXH555SUGD	AllnGaP	Super Ultra Green	574	Green Diffused	5-25	2.2	25	20	60	SSL-LXA227SUGD
SSF-LXH555SYD	AllnGaP	Super Yellow	590	Yellow Diffused	5-25	2	45	20	60	SSL-LXA227SYD
SSF-LXH555USB	InGaN/SiC	Ultra Super Blue	470	Blue Diffused	5-25	3.5	30	20	60	SSL-LXA227USB

SSF-LXH555XX-4 Series

T-2mm Quad, Right Angle Indicator



FEATURES / OPTIONS

- ▶ State-of-the-Art High Brightness LED Chip Technology
- ▶ Small Size - Less Than 2.54mm Wide
- ▶ Side-by-Side Stackable
- ▶ Low Current Power Requirement
- ▶ Choice of Colors
- ▶ Available With Transparent Lens
- ▶ Low Current Style 1-2mA (If)
- ▶ With Internal Resistor for 5V and 12V Operation
- ▶ Color Combinations

APPLICATIONS / USES

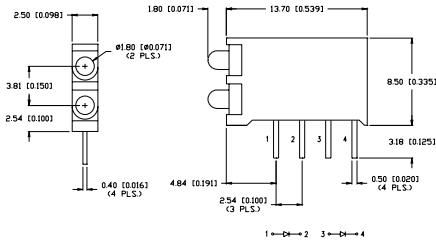
- ▶ Board Level Status Indicators
- ▶ Board Level Fault Indicators
- ▶ Warning/Alarm Lights
- ▶ Circuit Fault/Status Indicators
- ▶ Backlighting Overlays

Lumex Part Number	Die Material	Emitted Color	Peak (nm)	Lens	Operating Current (mA)	Operating TYP. Vf (V)	Brightness TYP. Mcd	@ mA	View Angle° 2θ	Component LED Used
HIGH BRIGHTNESS										
SSF-LXH555SID-4	AllnGaP	Super High Intensity Red	636	Red Diffused	5-25	2	45	20	60	SSL-LXA227SID
SSF-LXH555SOD-4	AllnGaP	Super Orange	610	Orange Diffused	5-25	2	45	20	60	SSL-LXA227SOD
SSF-LXH555SUGD-4	AllnGaP	Super Ultra Green	574	Green Diffused	5-25	2.2	25	20	60	SSL-LXA227SUGD
SSF-LXH555SYD-4	AllnGaP	Super Yellow	590	Yellow Diffused	5-25	2	45	20	60	SSL-LXA227SYD
SSF-LXH555USB-4	InGaN/SiC	Ultra Super Blue	470	Blue Diffused	5-25	3.5	30	20	60	SSL-LXA227USB



SSF-H2230XX Series

T-2mm Dual Tower, 1 Unit, Front-Back Leads



FEATURES / OPTIONS

- ▶ State-of-the-Art, Very High Intensity Chip Technology
- ▶ Small LED Lighted Lens (2.0mm Ø)
- ▶ Vertical Positioning (90° to the Board)
- ▶ Multi-Unit Construction
- ▶ Choice of Colors and Lenses
- ▶ Low Current Versions 1-2mA (If)
- ▶ Dual Tower Unit
- ▶ Color Combinations

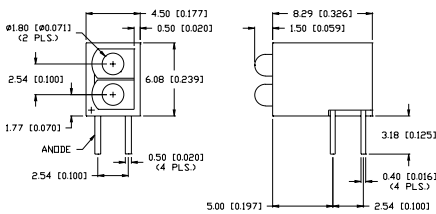
APPLICATIONS / USES

- ▶ Board Level Status Indicators
- ▶ Board Level Fault Indicators
- ▶ Warning/Alarm Signaling
- ▶ Circuit Fault Finder Indicators
- ▶ Backlighting Panel Overlays

Lumex Part Number	Die Material	Emitted Color	Peak (nm)	Lens	Operating Current (mA)	Operating TYP. Vf (V)	Brightness TYP. Mcd	@ mA	View Angle° 2θ	Component LED Used
HIGH BRIGHTNESS										
SSF-H2230SID	AllInGaP	Super High Intensity Red	636	Red Diffused	5-25	2	120	20	120	SSL-LX20333SID
SSF-H2230SOD	AllInGaP	Super Orange	610	Orange Diffused	5-25	2	120	20	1220	SSL-LX20333SOD
SSF-H2230SUGD	AllInGaP	Super Ultra Green	574	Green Diffused	5-25	2.2	70	20	70	SSL-LX20333SUGD
SSF-H2230SYD	AllInGaP	Super Yellow	590	Yellow Diffused	5-25	2	120	20	120	SSL-LX20333SYD
SSF-H2230USBD	InGaN/SiC	Ultra Super Blue	470	Blue Diffused	5-25	3.5	100	20	120	SSL-LX20333USBD

SSF-LXH512 Series

T-2mm Dual Tower, Single Unit, Side-by-Side Leads



FEATURES / OPTIONS

- ▶ State-of-the-Art, Very High Intensity Chip Technology
- ▶ Small LED Lighted Lens (2.0mm Ø)
- ▶ Vertical Positioning (90° to the Board)
- ▶ Multi-Unit Construction
- ▶ Choice of Colors and Lenses
- ▶ Low Current Versions 1-2mA (If)
- ▶ Dual Tower Unit
- ▶ Color Combinations

APPLICATIONS / USES

- ▶ Board Level Status Indicators
- ▶ Board Level Fault Indicators
- ▶ Warning/Alarm Signaling
- ▶ Circuit Fault Finder Indicators
- ▶ Backlighting Panel Overlays

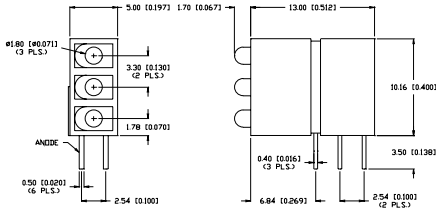
Lumex Part Number	Die Material	Emitted Color	Peak (nm)	Lens	Operating Current (mA)	Operating TYP. Vf (V)	Brightness TYP. Mcd	@ mA	View Angle° 2θ	Component LED Used
HIGH BRIGHTNESS										
SSF-LXH512SID	AllInGaP	Super High Intensity Red	636	Red Diffused	5-25	2	120	20	70	SSL-LX20333SID
SSF-LXH512SOD	AllInGaP	Super Orange	610	Orange Diffused	5-25	2	120	20	70	SSL-LX20333SOD
SSF-LXH512SUGD	AllInGaP	Super Ultra Green	574	Green Diffused	5-25	2.2	70	20	70	SSL-LX20333SUGD
SSF-LXH512SYD	AllInGaP	Super Yellow	590	Yellow Diffused	5-25	2	120	20	70	SSL-LX20333SYD
SSF-LXH512USBD	InGaN/SiC	Ultra Super Blue	470	Blue Diffused	5-25	3.5	100	20	70	SSL-LX20333USBD



1
2
3
4
5
6
7
8
9
10
11
12
13
14
15
16
17
18
19
20
21
22
23
24
25
26
27
28
29

SSF-LXH513XX Series

T-2mm Tri Tower, Single Unit, Side-by-Side Leads



FEATURES / OPTIONS

- ▶ State-of-the-Art, Very High Intensity Chip Technology
- ▶ Small LED Lighted Lens (2.0mm Ø)
- ▶ Vertical Positioning (90° to the Board)
- ▶ Multi-Unit Construction
- ▶ Polarity Orientation Locking Holder
- ▶ Choice of Colors and Lenses
- ▶ Low Current Versions 1-2mA (If)
- ▶ Triple Tower Unit
- ▶ Color Combinations

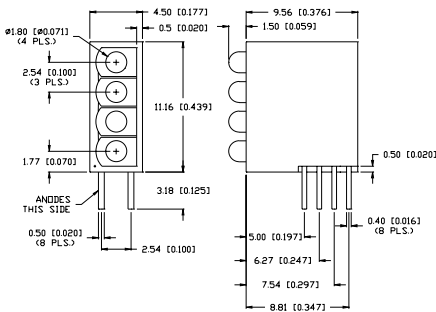
APPLICATIONS / USES

- ▶ Board Level Status Indicators
- ▶ Board Level Fault Indicators
- ▶ Warning/Alarm Signaling
- ▶ Circuit Fault Finder Indicators
- ▶ Backlighting Panel Overlays

Lumex Part Number	Die Material	Emitted Color	Peak (nm)	Lens	Operating Current (mA)	Operating TYP. Vf (V)	Brightness TYP. Mcd	@ mA	View Angle° 2θ	Component LED Used
HIGH BRIGHTNESS										
SSF-LXH513SID	AllnGaP	Super High Intensity Red	636	Red Diffused	5-25	2	120	20	70	SSL-LX20333SID
SSF-LXH513SOD	AllnGaP	Super Orange	610	Orange Diffused	5-25	2	120	20	70	SSL-LX20333SOD
SSF-LXH513SUGD	AllnGaP	Super Ultra Green	574	Green Diffused	5-25	2.2	70	20	70	SSL-LX20333SUGD
SSF-LXH513SYD	AllnGaP	Super Yellow	590	Yellow Diffused	5-25	2	120	20	70	SSL-LX20333SYD
SSF-LXH513USBD	InGaN/SiC	Ultra Super Blue	470	Blue Diffused	5-25	3.5	100	20	70	SSL-LX20333USBD

SSF-LXH514 Series

T-2mm Quad Tower, Single Unit, Side-by-Side Leads



FEATURES / OPTIONS

- ▶ State-of-the-Art, Very High Intensity Chip Technology
- ▶ Small LED Lighted Lens (2.0mm Ø)
- ▶ Vertical Positioning (90° to the Board)
- ▶ Multi-Unit Construction
- ▶ Polarity Orientation Locking Holder
- ▶ Choice of Colors and Lenses
- ▶ Low Current Versions 1-2mA (If)
- ▶ Quad Tower Unit
- ▶ Color Combinations

APPLICATIONS / USES

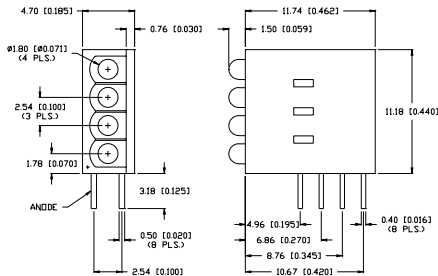
- ▶ Board Level Status Indicators
- ▶ Board Level Fault Indicators
- ▶ Warning/Alarm Signaling
- ▶ Circuit Fault Finder Indicators
- ▶ Backlighting Panel Overlays

Lumex Part Number	Die Material	Emitted Color	Peak (nm)	Lens	Operating Current (mA)	Operating TYP. Vf (V)	Brightness TYP. Mcd	@ mA	View Angle° 2θ	Component LED Used
HIGH BRIGHTNESS										
SSF-LXH514SID	AllnGaP	Super High Intensity Red	636	Red Diffused	5-25	2	120	20	70	SSL-LX20333SID
SSF-LXH514SOD	AllnGaP	Super Orange	610	Orange Diffused	5-25	2	120	20	70	SSL-LX20333SOD
SSF-LXH514SUGD	AllnGaP	Super Ultra Green	574	Green Diffused	5-25	2.2	70	20	70	SSL-LX20333SUGD
SSF-LXH514SYD	AllnGaP	Super Yellow	590	Yellow Diffused	5-25	2	120	20	70	SSL-LX20333SYD
SSF-LXH514USBD	InGaN/SiC	Ultra Super Blue	470	Blue Diffused	5-25	3.5	100	20	70	SSL-LX20333USBD



SSF-LXH5147 Series

T-2mm Quad Tower with Greater Pin Spacing



FEATURES / OPTIONS

- ▶ State-of-the-Art, Very High Intensity Chip Technology
- ▶ Small LED Lighted Lens (2.0mm Ø)
- ▶ Vertical Positioning (90° to the Board)
- ▶ Multi-Unit Construction
- ▶ Polarity Orientation Locking Holder
- ▶ Choice of Colors and Lenses
- ▶ Low Current Versions 1-2mA (If)
- ▶ Quad Tower Unit
- ▶ Color Combinations

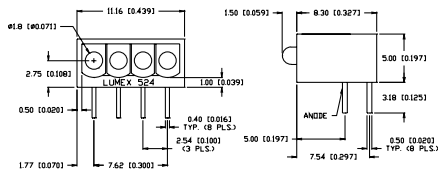
APPLICATIONS / USES

- ▶ Board Level Status Indicators
- ▶ Board Level Fault Indicators
- ▶ Warning/Alarm Signaling
- ▶ Circuit Fault Finder Indicators
- ▶ Backlighting Panel Overlays

Lumex Part Number	Die Material	Emitted Color	Peak (nm)	Lens	Operating Current (mA)	Operating TYP. Vf (V)	Brightness TYP. Mcd	@ mA	View Angle° 2θ	Component LED Used
HIGH BRIGHTNESS										
SSF-LXH5147SID	AlInGaP	Super High Intensity Red	636	Red Diffused	5-25	2	120	20	70	SSL-LX20333SID
SSF-LXH5147SOD	AlInGaP	Super Orange	610	Orange Diffused	5-25	2	120	20	70	SSL-LX20333SOD
SSF-LXH5147SUGD	AlInGaP	Super Ultra Green	574	Green Diffused	5-25	2.2	70	20	70	SSL-LX20333SUGD
SSF-LXH5147SYD	AlInGaP	Super Yellow	590	Yellow Diffused	5-25	2	120	20	70	SSL-LX20333SYD
SSF-LXH5147USBD	InGaN/SiC	Ultra Super Blue	470	Blue Diffused	5-25	3.5	100	20	70	SSL-LX20333USBD

SSF-LXH524 Series

T-2mm Quad Ranch, Front-Back Leads



FEATURES / OPTIONS

- ▶ State-of-the-Art, Very High Intensity Chip Technology
- ▶ Small LED Lighted Lens (2.0mm Ø)
- ▶ Vertical Positioning (90° to the Board)
- ▶ Multi-Unit Construction
- ▶ Polarity Orientation Locking Holder
- ▶ Choice of Colors and Lenses
- ▶ Low Current Versions 1-2mA (If)
- ▶ Quad Lateral Unit
- ▶ Color Combinations

APPLICATIONS / USES

- ▶ Board Level Status Indicators
- ▶ Board Level Fault Indicators
- ▶ Warning/Alarm Signaling
- ▶ Circuit Fault Finder Indicators
- ▶ Backlighting Panel Overlays

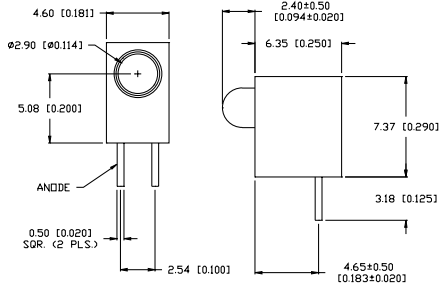
Lumex Part Number	Die Material	Emitted Color	Peak (nm)	Lens	Operating Current (mA)	Operating TYP. Vf (V)	Brightness TYP. Mcd	@ mA	View Angle° 2θ	Component LED Used
HIGH BRIGHTNESS										
SSF-LXH524SID	AlInGaP	Super High Intensity Red	636	Red Diffused	5-25	2	120	20	70	SSL-LX20333SID
SSF-LXH524SOD	AlInGaP	Super Orange	610	Orange Diffused	5-25	2	120	20	70	SSL-LX20333SOD
SSF-LXH524SUGD	AlInGaP	Super Ultra Green	574	Green Diffused	5-25	2.2	70	20	70	SSL-LX20333SUGD
SSF-LXH524SYD	AlInGaP	Super Yellow	590	Yellow Diffused	5-25	2	120	20	70	SSL-LX20333SYD
SSF-LXH524USBD	InGaN/SiC	Ultra Super Blue	470	Blue Diffused	5-25	3.5	100	20	70	SSL-LX20333USBD



1
2
3
4
5
6
7
8
9
10
11
12
13
14
15
16
17
18
19
20
21
22
23
24
25
26
27
28
29

SSF-LXH103 Series

T-3mm Single Level, LED Center 0.2" from PCB



FEATURES / OPTIONS

- ▶ State-of-the-Art, Chip Technology
- ▶ Easy Drop-In Board Installation
- ▶ Right Angle to the Board Position
- ▶ Choice of Colors and Lens Finishes
- ▶ Low Current Versions Available
- ▶ Color or Intensity Sorting Available
- ▶ Popular Style, Fast Delivery
- ▶ Blinking LED
- ▶ With Internal Resistor for 5V and 12V Operation
- ▶ Black or Gray Holders for High Contrast

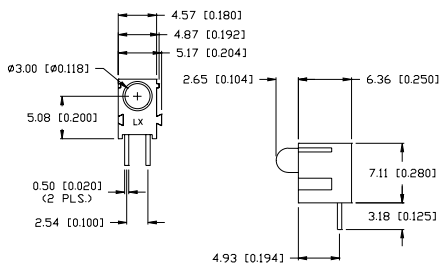
APPLICATIONS / USES

- ▶ Board Level Status Indicators
- ▶ Board Level Fault Indicators
- ▶ Circuit Troubleshooting Indicators
- ▶ Warning/Alarm Lights
- ▶ Backlighting of Overlays
- ▶ Post Lighting Switches and Keypads

Lumex Part Number	Die Material	Emitted Color	Peak (nm)	Lens	Operating Current (mA)	Operating TYP. Vf (V)	Brightness TYP. Mcd	@ mA	View Angle° 2θ	Component LED Used
HIGH BRIGHTNESS										
SSF-LXH103SID	AllnGaP	Super High Intensity Red	636	Red Diffused	5-25	2	100	20	60	SSL-LX3044SID
SSF-LXH103SOD	AllnGaP	Super Orange	610	Orange Diffused	5-25	2	100	20	60	SSL-LX3044SOD
SSF-LXH103SUGD	AllnGaP	Super Ultra Green	574	Green Diffused	5-25	2.2	60	20	60	SSL-LX3044SUGD
SSF-LXH103SYD	AllnGaP	Super Yellow	590	Yellow Diffused	5-25	2	100	20	60	SSL-LX3044SYD
SSF-LXH103USBD	InGaN/SiC	Ultra Super Blue	470	Blue Diffused	5-25	3.5	200	20	60	SSL-LX3044USBD
SSF-LXH103UWW	InGaN/SiC	Ultra White	-	White Diffused	5-25	3.5	500	20	30	SSL-LX3044UWW
STANDARD BRIGHTNESS										
SSF-LXH103GD	GaP	Green	565	Green Diffused	5-25	2.2	40	20	60	SSL-LX3044GD
SSF-LXH103ID	GaAsP	High Intensity Red	635	Red Diffused	5-25	2	50	20	60	SSL-LX3044ID
SSF-LXH103SRD	GaAlAs	Super Red	660	Red Diffused	5-25	1.7	80	20	60	SSL-LX3044SRD
SSF-LXH103YD	GaAsP	Yellow	585	Yellow Diffused	5-25	2.1	40	20	60	SSL-LX3044YD

SSF-LXHM107 Series

T-3mm Single Level Mating, LED Center 0.2" from PCB



FEATURES / OPTIONS

- ▶ State-of-the-Art, Chip Technology
- ▶ Easy Drop-In Board Installation
- ▶ Right Angle to the Board Position
- ▶ Choice of Colors and Lens Finishes
- ▶ Low Current Versions Available
- ▶ Color or Intensity Sorting Available
- ▶ Mating Holder
- ▶ Blinking LED
- ▶ With Internal Resistor for 5V and 12V Operation
- ▶ Black or Gray Holders for High Contrast
- ▶ Color Combinations
- ▶ Mating Feature Allows for Multiple Position

APPLICATIONS / USES

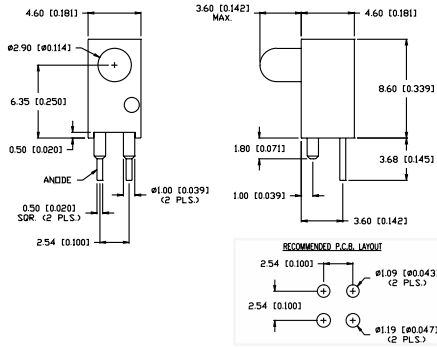
- ▶ Board Level Status Indicators
- ▶ Board Level Fault Indicators
- ▶ Circuit Troubleshooting Indicators
- ▶ Warning/Alarm Lights
- ▶ Backlighting of Overlays
- ▶ Post Lighting Switches and Keypads

Lumex Part Number	Die Material	Emitted Color	Peak (nm)	Lens	Operating Current (mA)	Operating TYP. Vf (V)	Brightness TYP. Mcd	@ mA	View Angle° 2θ	Component LED Used
HIGH BRIGHTNESS										
SSF-LXHM107SID	AllnGaP	Super High Intensity Red	636	Red Diffused	5-25	2	100	20	60	SSL-LX3044SID
SSF-LXHM107SOD	AllnGaP	Super Orange	610	Orange Diffused	5-25	2	100	20	60	SSL-LX3044SOD
SSF-LXHM107SUGD	AllnGaP	Super Ultra Green	574	Green Diffused	5-25	2.2	60	20	60	SSL-LX3044SUGD
SSF-LXHM107SYD	AllnGaP	Super Yellow	590	Yellow Diffused	5-25	2	100	20	60	SSL-LX3044SYD
SSF-LXHM107USBD	InGaN/SiC	Ultra Super Blue	470	Blue Diffused	5-25	3.5	200	20	60	SSL-LX3044USBD
SSF-LXHM107UWW	InGaN/SiC	Ultra White	-	White Diffused	5-25	3.5	500	20	30	SSL-LX3044UWW



SSF-LXH1360 Series

T-3mm Single Level with Locator Pins



FEATURES / OPTIONS

- ▶ State-of-the-Art, Chip Technology
- ▶ Easy Drop-In Board Installation
- ▶ Right Angle to the Board Position
- ▶ Choice of Colors and Lens Finishes
- ▶ Low Current Versions Available
- ▶ Color or Intensity Sorting Available
- ▶ Locator Feet/Posts
- ▶ Blinking LED
- ▶ With Internal Resistor for 5V and 12V Operation
- ▶ Black or Gray Holders for High Contrast

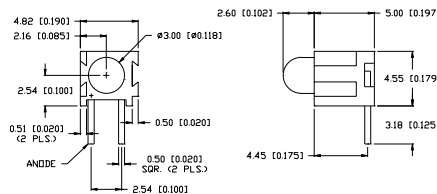
APPLICATIONS / USES

- ▶ Board Level Status Indicators
- ▶ Board Level Fault Indicators
- ▶ Circuit Troubleshooting Indicators
- ▶ Warning/Alarm Lights
- ▶ Backlighting of Overlays
- ▶ Post Lighting Switches and Keypads

Lumex Part Number	Die Material	Emitted Color	Peak (nm)	Lens	Operating Current (mA)	Operating TYP. Vf (V)	Brightness TYP. Mcd	@ mA	View Angle° 2θ	Component LED Used
HIGH BRIGHTNESS										
SSF-LXH1360SID	AlInGaP	Super High Intensity Red	636	Red Diffused	5-25	2	100	20	60	SSL-LX3044SID
SSF-LXH1360SOD	AlInGaP	Super Orange	610	Orange Diffused	5-25	2	100	20	60	SSL-LX3044SOD
SSF-LXH1360UGD	AlInGaP	Super Ultra Green	574	Green Diffused	5-25	2.2	60	20	60	SSL-LX3044UGD
SSF-LXH1360SYD	AlInGaP	Super Yellow	590	Yellow Diffused	5-25	2	100	20	60	SSL-LX3044SYD
SSF-LXH1360USB	InGaN/SiC	Ultra Super Blue	470	Blue Diffused	5-25	3.5	200	20	60	SSL-LX3044USB

SSF-LXHM140 Series

T-3mm Single Level Mating, LED Center 0.1" from PCB



FEATURES / OPTIONS

- ▶ State-of-the-Art, Chip Technology
- ▶ Easy Drop-In Board Installation
- ▶ Right Angle to the Board Position
- ▶ Choice of Colors and Lens Finishes
- ▶ Low Current Versions Available
- ▶ Color or Intensity Sorting Available
- ▶ Mating Holder
- ▶ Blinking LED
- ▶ With Internal Resistor for 5V and 12V Operation
- ▶ Black or Gray Holders for High Contrast
- ▶ Color Combinations

APPLICATIONS / USES

- ▶ Board Level Status Indicators
- ▶ Board Level Fault Indicators
- ▶ Circuit Troubleshooting Indicators
- ▶ Warning/Alarm Lights
- ▶ Backlighting of Overlays
- ▶ Post Lighting Switches and Keypads

Lumex Part Number	Die Material	Emitted Color	Peak (nm)	Lens	Operating Current (mA)	Operating TYP. Vf (V)	Brightness TYP. Mcd	@ mA	View Angle° 2θ	Component LED Used
HIGH BRIGHTNESS										
SSF-LXHM140SID	AlInGaP	Super High Intensity Red	636	Red Diffused	5-25	2	100	20	60	SSL-LX3044SID
SSF-LXHM140SOD	AlInGaP	Super Orange	610	Orange Diffused	5-25	2	100	20	60	SSL-LX3044SOD
SSF-LXHM140UGD	AlInGaP	Super Ultra Green	574	Green Diffused	5-25	2.2	60	20	60	SSL-LX3044UGD
SSF-LXHM140SYD	AlInGaP	Super Yellow	590	Yellow Diffused	5-25	2	100	20	60	SSL-LX3044SYD
SSF-LXHM140USB	InGaN/SiC	Ultra Super Blue	470	Blue Diffused	5-25	3.5	200	20	60	SSL-LX3044USB
SSF-LXHM140UWW	InGaN/SiC	Ultra White	-	White Diffused	5-25	3.5	500	20	30	SSL-LX3044UWW



USA/Canada 1-800-278-5666
Asia +886-3-5821124



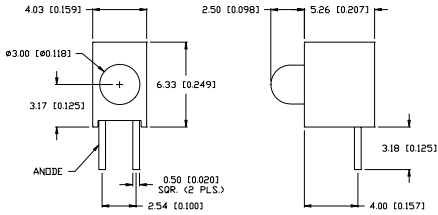
www.lumex.com



USA/Canada 1-847-359-8904
Asia +886-3-5821154

1
2
3
4
5
6
7
8
9
10
11
12
13
14
15
16
17
18
19
20
21
22
23
24
25
26
27
28
29

SSF-LXH303 Series T-3mm Single Level with Stand-off, LED Center 0.125" from PCB



FEATURES / OPTIONS

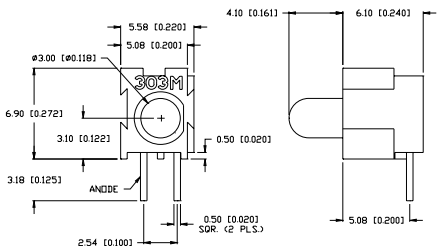
- ▶ State-of-the-Art, Chip Technology
- ▶ Easy Drop-In Board Installation
- ▶ Right Angle to the Board Position
- ▶ Choice of Colors and Lens Finishes
- ▶ Low Current Versions Available
- ▶ Color or Intensity Sorting Available
- ▶ Popular Style
- ▶ Blinking LED
- ▶ With Internal Resistor for 5V and 12V Operation
- ▶ Black or Gray Holders for High Contrast

APPLICATIONS / USES

- ▶ Board Level Status Indicators
- ▶ Board Level Fault Indicators
- ▶ Circuit Troubleshooting Indicators
- ▶ Warning/Alarm Lights
- ▶ Backlighting of Overlays
- ▶ Post Lighting Switches and Keypads

Lumex Part Number	Die Material	Emitted Color	Peak (nm)	Lens	Operating Current (mA)	Operating TYP. Vf (V)	Brightness TYP. Mcd	@ mA	View Angle° 2θ	Component LED Used
HIGH BRIGHTNESS										
SSF-LXH303SID	AllnGaP	Super High Intensity Red	636	Red Diffused	5-25	2	100	20	60	SSL-LX3044SID
SSF-LXH303SOD	AllnGaP	Super Orange	610	Orange Diffused	5-25	2	100	20	60	SSL-LX3044SOD
SSF-LXH303SUGD	AllnGaP	Super Ultra Green	574	Green Diffused	5-25	2.2	60	20	60	SSL-LX3044SUGD
SSF-LXH303SYD	AllnGaP	Super Yellow	590	Yellow Diffused	5-25	2	100	20	60	SSL-LX3044SYD
SSF-LXH303USBD	InGaN/SiC	Ultra Super Blue	470	Blue Diffused	5-25	3.5	200	20	60	SSL-LX3044USBD
SSF-LXH303UWW	InGaN/SiC	Ultra White	-	White Diffused	5-25	3.5	500	20	30	SSL-LX3044UWW

SSF-LXH303M Series 3mm Single Level Mating with Stand-off, LED Center 0.125" from PCB



FEATURES / OPTIONS

- ▶ State-of-the-Art, Chip Technology
- ▶ Easy Drop-In Board Installation
- ▶ Right Angle to the Board Position
- ▶ Choice of Colors and Lens Finishes
- ▶ Low Current Versions Available
- ▶ Color or Intensity Sorting Available
- ▶ Blinking LED
- ▶ With Internal Resistor for 5V and 12V Operation
- ▶ Black or Gray Holders for High Contrast
- ▶ Color Combinations
- ▶ Mating Feature Allows for Multiple Positions

APPLICATIONS / USES

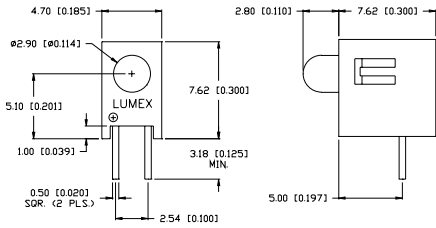
- ▶ Board Level Status Indicators
- ▶ Board Level Fault Indicators
- ▶ Circuit Troubleshooting Indicators
- ▶ Warning/Alarm Lights
- ▶ Backlighting of Overlays
- ▶ Post Lighting Switches and Keypads

Lumex Part Number	Die Material	Emitted Color	Peak (nm)	Lens	Operating Current (mA)	Operating TYP. Vf (V)	Brightness TYP. Mcd	@ mA	View Angle° 2θ	Component LED Used
HIGH BRIGHTNESS										
SSF-LXH303MSID	AllnGaP	Super High Intensity Red	636	Red Diffused	5-25	2	100	20	60	SSL-LX3044SID
SSF-LXH303MSOD	AllnGaP	Super Orange	610	Orange Diffused	5-25	2	100	20	60	SSL-LX3044SOD
SSF-LXH303MSUGD	AllnGaP	Super Ultra Green	574	Green Diffused	5-25	2.2	60	20	60	SSL-LX3044SUGD
SSF-LXH303MSYD	AllnGaP	Super Yellow	590	Yellow Diffused	5-25	2	100	20	60	SSL-LX3044SYD
SSF-LXH303MUSBD	InGaN/SiC	Ultra Super Blue	470	Blue Diffused	5-25	3.5	200	20	60	SSL-LX3044USBD
SSF-LXH303MUWW	InGaN/SiC	Ultra White	-	White Diffused	5-25	3.5	500	20	30	SSL-LX3044UWW



SSF-LXH304 Series

T-3mm Single Level with Stand-off, Open Back



FEATURES / OPTIONS

- ▶ State-of-the-Art, Chip Technology
- ▶ Easy Drop-In Board Installation
- ▶ Right Angle to the Board Position
- ▶ Choice of Colors and Lens Finishes
- ▶ Low Current Versions Available
- ▶ Color or Intensity Sorting Available
- ▶ Popular Fast Delivery Style
- ▶ Blinking LED
- ▶ With Internal Resistor for 5V and 12V Operation
- ▶ Black or Gray Holders for High Contrast

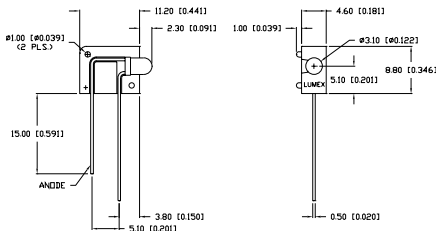
APPLICATIONS / USES

- ▶ Board Level Status Indicators
- ▶ Board Level Fault Indicators
- ▶ Circuit Troubleshooting Indicators
- ▶ Warning/Alarm Lights
- ▶ Backlighting of Overlays
- ▶ Post Lighting Switches and Keypads

Lumex Part Number	Die Material	Emitted Color	Peak (nm)	Lens	Operating Current (mA)	Operating TYP. Vf (V)	Brightness TYP. Mcd	@ mA	View Angle° 2θ	Component LED Used
HIGH BRIGHTNESS										
SSF-LXH304SID	AllnGaP	Super High Intensity Red	636	Red Diffused	5-25	2	100	20	60	SSL-LX3044SID
SSF-LXH304SOD	AllnGaP	Super Orange	610	Orange Diffused	5-25	2	100	20	60	SSL-LX3044SOD
SSF-LXH304SUGD	AllnGaP	Super Ultra Green	574	Green Diffused	5-25	2.2	60	20	60	SSL-LX3044SUGD
SSF-LXH304SYD	AllnGaP	Super Yellow	590	Yellow Diffused	5-25	2	100	20	60	SSL-LX3044SYD
SSF-LXH304USBD	InGaN/SiC	Ultra Super Blue	470	Blue Diffused	5-25	3.5	200	20	60	SSL-LX3044USBD
SSF-LXH304UWW	InGaN/SiC	Ultra White	-	White Diffused	5-25	3.5	500	20	30	SSL-LX3044UWW

SSF-LXH1031 Series

T-3mm Single Level Mating, Front-Back Leads



FEATURES / OPTIONS

- ▶ State-of-the-Art, Chip Technology
- ▶ Easy Drop-In Board Installation
- ▶ Right Angle to the Board Position
- ▶ Choice of Colors and Lens Finishes
- ▶ Low Current Versions Available
- ▶ Color or Intensity Sorting Available
- ▶ Blinking LED
- ▶ With Internal Resistor for 5V and 12V Operation
- ▶ Black or Gray Holders for High Contrast
- ▶ Color Combinations
- ▶ Mating Feature Allows for Multiple Positions

APPLICATIONS / USES

- ▶ Board Level Status Indicators
- ▶ Board Level Fault Indicators
- ▶ Circuit Troubleshooting Indicators
- ▶ Warning/Alarm Lights
- ▶ Backlighting of Overlays
- ▶ Post Lighting Switches and Keypads

Lumex Part Number	Die Material	Emitted Color	Peak (nm)	Lens	Operating Current (mA)	Operating TYP. Vf (V)	Brightness TYP. Mcd	@ mA	View Angle° 2θ	Component LED Used
HIGH BRIGHTNESS										
SSF-LXH1031SID	AllnGaP	Super High Intensity Red	636	Red Diffused	5-25	2	100	20	60	SSL-LX3054SID
SSF-LXH1031SOD	AllnGaP	Super Orange	610	Orange Diffused	5-25	2	100	20	60	SSL-LX3054SOD
SSF-LXH1031SUGD	AllnGaP	Super Ultra Green	574	Green Diffused	5-25	2.2	60	20	60	SSL-LX3054SUGD
SSF-LXH1031SYD	AllnGaP	Super Yellow	590	Yellow Diffused	5-25	2	100	20	60	SSL-LX3054SYD
SSF-LXH1031USBD	InGaN/SiC	Ultra Super Blue	470	Blue Diffused	5-25	3.5	200	20	60	SSL-LX3054USBD



USA/Canada 1-800-278-5666
Asia +886-3-5821124



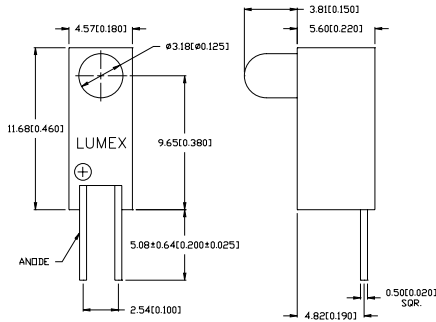
www.lumex.com



USA/Canada 1-847-359-8904
Asia +886-3-5821154

SSF-LXH1032 Series

T-3mm Single Level, High Profile, Long Protrusion



FEATURES / OPTIONS

- ▶ State-of-the-Art, Chip Technology
- ▶ Easy Drop-In Board Installation
- ▶ Right Angle to the Board Position
- ▶ Choice of Colors and Lens Finishes
- ▶ Low Current Versions Available
- ▶ Color or Intensity Sorting Available
- ▶ Blinking LED
- ▶ With Internal Resistor for 5V and 12V Operation
- ▶ Black or Gray Holders for High Contrast

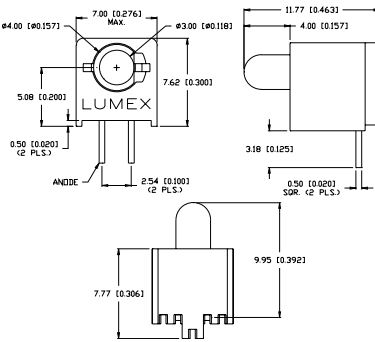
APPLICATIONS / USES

- ▶ Board Level Status Indicators
- ▶ Board Level Fault Indicators
- ▶ Circuit Troubleshooting Indicators
- ▶ Warning/Alarm Lights
- ▶ Backlighting of Overlays
- ▶ Post Lighting Switches and Keypads

Lumex Part Number	Die Material	Emitted Color	Peak (nm)	Lens	Operating Current (mA)	Operating TYP. Vf (V)	Brightness TYP. Mcd	@ mA	View Angle° 2θ	Component LED Used
HIGH BRIGHTNESS										
SSF-LXH1032SID	AllInGaP	Super High Intensity Red	636	Red Diffused	5-25	2	100	20	60	SSL-LX306F4SID
SSF-LXH1032SOD	AllInGaP	Super Orange	610	Orange Diffused	5-25	2	100	20	60	SSL-LX306F4SOD
SSF-LXH1032SUGD	AllInGaP	Super Ultra Green	574	Green Diffused	5-25	2.2	60	20	60	SSL-LX306F4SUGD
SSF-LXH1032SYD	AllInGaP	Super Yellow	590	Yellow Diffused	5-25	2	100	20	60	SSL-LX306F4SYD
SSF-LXH1032USBD	InGaN/SiC	Ultra Super Blue	470	Blue Diffused	5-25	3.5	200	20	60	SSL-LX306F4USBD

SSF-LXH409-54xx Series

T-3mm Single Level, LED Center 0.2" from PCB, Wide Holder



FEATURES / OPTIONS

- ▶ State-of-the-Art, Chip Technology
- ▶ Easy Drop-In Board Installation
- ▶ Right Angle to the Board Position
- ▶ Choice of Colors and Lens Finishes
- ▶ Low Current Versions Available
- ▶ Color or Intensity Sorting Available
- ▶ Blinking LED
- ▶ With Internal Resistor for 5V and 12V Operation
- ▶ Black or Gray Holders for High Contrast

APPLICATIONS / USES

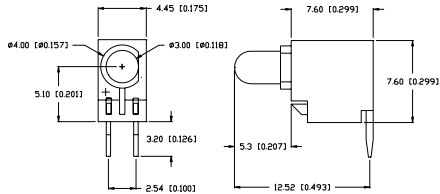
- ▶ Board Level Status Indicators
- ▶ Board Level Fault Indicators
- ▶ Circuit Troubleshooting Indicators
- ▶ Warning/Alarm Lights
- ▶ Backlighting of Overlays
- ▶ Post Lighting Switches and Keypads

Lumex Part Number	Die Material	Emitted Color	Peak (nm)	Lens	Operating Current (mA)	Operating TYP. Vf (V)	Brightness TYP. Mcd	@ mA	View Angle° 2θ	Component LED Used
HIGH BRIGHTNESS										
SSF-LXH409-54SID	AllInGaP	Super High Intensity Red	636	Red Diffused	5-25	2	100	20	60	SSL-LX3054SID
SSF-LXH409-54SOD	AllInGaP	Super Orange	610	Orange Diffused	5-25	2	100	20	60	SSL-LX3054SOD
SSF-LXH409-54SUGD	AllInGaP	Super Ultra Green	574	Green Diffused	5-25	2.2	60	20	60	SSL-LX3054SUGD
SSF-LXH409-54SYD	AllInGaP	Super Yellow	590	Yellow Diffused	5-25	2	100	20	60	SSL-LX3054SYD
SSF-LXH409-54USBD	InGaN/SiC	Ultra Super Blue	470	Blue Diffused	5-25	3.5	200	20	60	SSL-LX3054USBD
SSF-LXH409-54UWW	InGaN/SiC	Ultra White	-	White Diffused	5-25	3.5	500	20	30	SSL-LX3054UWW



SSF-LXH4RA Series

T-3mm Single Level, Relampable



FEATURES / OPTIONS

- ▶ State-of-the-Art, Chip Technology
- ▶ Easy Drop-In Board Installation
- ▶ Right Angle to the Board Position
- ▶ Choice of Colors and Lens Finishes
- ▶ Low Current Versions Available
- ▶ Color or Intensity Sorting Available
- ▶ Replaceable LED
- ▶ Blinking LED
- ▶ With Internal Resistor for 5V and 12V Operation

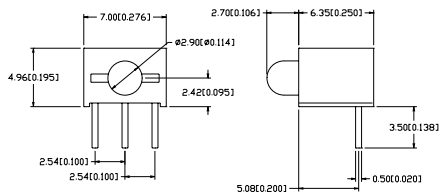
APPLICATIONS / USES

- ▶ Board Level Status Indicators
- ▶ Board Level Fault Indicators
- ▶ Circuit Troubleshooting Indicators
- ▶ Warning/Alarm Lights
- ▶ Backlighting of Overlays
- ▶ Post Lighting Switches and Keypads

Lumex Part Number	Die Material	Emitted Color	Peak (nm)	Lens	Operating Current (mA)	Operating TYP. Vf (V)	Brightness TYP. Mcd	@ mA	View Angle° 2θ	Component LED Used
HIGH BRIGHTNESS										
SSF-LXH4RASID	AlInGaP	Super High Intensity Red	636	Red Diffused	5-25	2	100	20	60	SSL-LX3054SID
SSF-LXH4RASOD	AlInGaP	Super Orange	610	Orange Diffused	5-25	2	100	20	60	SSL-LX3054SOD
SSF-LXH4RASUGD	AlInGaP	Super Ultra Green	574	Green Diffused	5-25	2.2	60	20	60	SSL-LX3054SUGD
SSF-LXH4RASVD	AlInGaP	Super Yellow	590	Yellow Diffused	5-25	2	100	20	60	SSL-LX3054SYD
SSF-LXH4RAUSB	InGaN/SiC	Ultra Super Blue	470	Blue Diffused	5-25	3.5	200	20	60	SSL-LX3054USB
SSF-LXH4RAUWW	InGaN/SiC	Ultra White	-	White Diffused	5-25	3.5	500	20	30	SSL-LX3054UWW

SSF-LXH109 Series

T-3mm 3-Leaded, Single Level, Bi-Color



FEATURES / OPTIONS

- ▶ State-of-the-Art, Chip Technology
- ▶ Easy Drop-In Board Installation
- ▶ Right Angle to the Board Position
- ▶ Choice of Colors and Lens Finishes
- ▶ Low Current Versions Available
- ▶ Color or Intensity Sorting Available
- ▶ Blinking LED
- ▶ With Internal Resistor for 5V and 12V Operation
- ▶ Black or Gray Holders for High Contrast
- ▶ Common Anode Version

APPLICATIONS / USES

- ▶ Board Level Status Indicators
- ▶ Board Level Fault Indicators
- ▶ Circuit Troubleshooting Indicators
- ▶ Warning/Alarm Lights
- ▶ Backlighting of Overlays
- ▶ Post Lighting Switches and Keypads

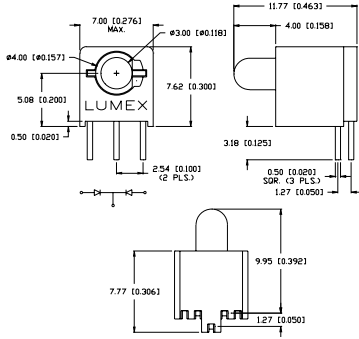
Lumex Part Number	Die Material	Emitted Color	Peak (nm)	Lens	Operating Current (mA)	Operating TYP. Vf (V)	Brightness TYP. Mcd	@ mA	View Angle° 2θ	Component LED Used
SSF-LXH109SISUGW	AlInGaP	Super High Intensity Red	636	Milky White	5-25	2	350	20	60	SSL-LX3059SISUGW
	AlInGaP	Super Ultra Green	574	Diffused	5-25	2.2	130	20		
SSF-LXH109SISYW	AlInGaP	Super High Intensity Red	636	Milky White	5-25	2	250	20	60	SSL-LX3059SISYW
	AlInGaP	Super Yellow	590	Diffused	5-25	2	250	20		
SSF-LXH109SYSUGW	AlInGaP	Super Yellow	590	Milky White	5-25	2	250	20	60	SSL-LX3059SYSUGW
	AlInGaP	Super Ultra Green	574	Diffused	5-25	2.2	80	20		



1
2
3
4
5
6
7
8
9
10
11
12
13
14
15
16
17
18
19
20
21
22
23
24
25
26
27
28
29

SSF-LXH409 Series

T-3mm 3-Leaded, Single Level, Bi-Color, Offset Cathode Lead



FEATURES / OPTIONS

- ▶ State-of-the-Art, Chip Technology
- ▶ Easy Drop-In Board Installation
- ▶ Right Angle to the Board Position
- ▶ Choice of Colors and Lens Finishes
- ▶ Low Current Versions Available
- ▶ Color or Intensity Sorting Available
- ▶ Blinking LED
- ▶ With Internal Resistor for 5V and 12V Operation
- ▶ Black or Gray Holders for High Contrast
- ▶ Common Anode Version

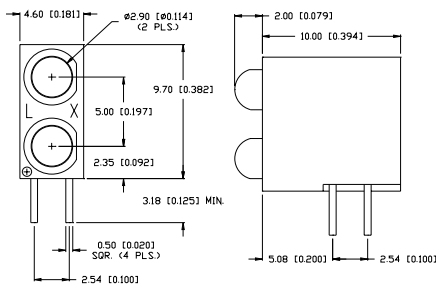
APPLICATIONS / USES

- ▶ Board Level Status Indicators
- ▶ Board Level Fault Indicators
- ▶ Circuit Troubleshooting Indicators
- ▶ Warning/Alarm Lights
- ▶ Backlighting of Overlays
- ▶ Post Lighting Switches and Keypads

Lumex Part Number	Die Material	Emitted Color	Peak (nm)	Lens	Operating Current (mA)	Operating TYP. Vf (V)	Brightness TYP. Mcd	@ mA	View Angle° 2θ	Component LED Used
SSF-LXH409SISUGW	AlInGaP	Super High Intensity Red	636	Milky White	5-25	2	350	20	60	SSL-LX3059SISUGW
	AlInGaP	Super Ultra Green	574	Diffused	5-25	2.2	130	20		
SSF-LXH409SISYW	AlInGaP	Super High Intensity Red	636	Milky White	5-25	2	250	20	60	SSL-LX3059SISYW
	AlInGaP	Super Yellow	590	Diffused	5-25	2	250	20		
SSF-LXH409SYSUGW	AlInGaP	Super Yellow	590	Milky White	5-25	2	250	20	60	SSL-LX3059SYSUGW
	AlInGaP	Super Ultra Green	574	Diffused	5-25	2.2	80	20		

SSF-LXH2103XX/2 Series

T-3mm Dual Tower, 0.2" Leadframe Offset, 2mm Protrusion



FEATURES / OPTIONS

- ▶ State-of-the-Art, Chip Technology
- ▶ Easy Drop-In Board Installation
- ▶ Right Angle to the Board Position
- ▶ Choice of Colors and Lens Finishes
- ▶ Low Current Versions Available
- ▶ Color or Intensity Sorting Available
- ▶ Blinking LED
- ▶ With Internal Resistor for 5V and 12V Operation
- ▶ Black or Gray Holders for High Contrast
- ▶ Color Combinations

APPLICATIONS / USES

- ▶ Board Level Status Indicators
- ▶ Board Level Fault Indicators
- ▶ Circuit Troubleshooting Indicators
- ▶ Warning/Alarm Lights
- ▶ Backlighting of Overlays
- ▶ Post Lighting Switches and Keypads

Lumex Part Number	Die Material	Emitted Color	Peak (nm)	Lens	Operating Current (mA)	Operating TYP. Vf (V)	Brightness TYP. Mcd	@ mA	View Angle° 2θ	Component LED Used
HIGH BRIGHTNESS										
SSF-LXH2103SISID/2	AlInGaP	Super High Intensity Red	636	Red Diffused	5-25	2	100	20	60	SSL-LX3044SID
SSF-LXH2103SOSOD/2	AlInGaP	Super Orange	610	Orange Diffused	5-25	2	100	20	60	SSL-LX3044SOD
SSF-LXH2103SUGUGD2	AlInGaP	Super Ultra Green	574	Green Diffused	5-25	2.2	60	20	60	SSL-LX3044SUGD
SSF-LXH2103SYSYD/2	AlInGaP	Super Yellow	590	Yellow Diffused	5-25	2	100	20	60	SSL-LX3044SYD
SSF-LXH2103USBSBD2	InGaN/SiC	Ultra Super Blue	470	Blue Diffused	5-25	3.5	200	20	60	SSL-LX3044USBD



USA/Canada 1-800-278-5666
Asia +886-3-5821124



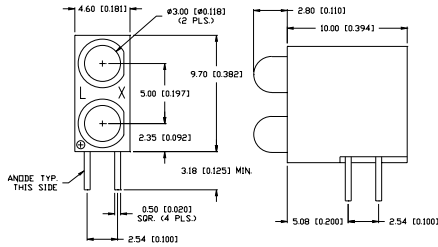
www.lumex.com



USA/Canada 1-847-359-8904
Asia +886-3-5821154

SSF-LXH2103XX/3 Series

T-3mm Dual Tower, 0.2" Leadframe Offset, 3mm Protrusion



FEATURES / OPTIONS

- ▶ State-of-the-Art, Chip Technology
- ▶ Easy Drop-In Board Installation
- ▶ Right Angle to the Board Position
- ▶ Choice of Colors and Lens Finishes
- ▶ Low Current Versions Available
- ▶ Color or Intensity Sorting Available
- ▶ Blinking LED
- ▶ With Internal Resistor for 5V and 12V Operation
- ▶ Black or Gray Holders for High Contrast
- ▶ Color Combinations

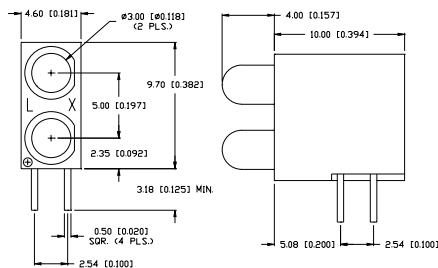
APPLICATIONS / USES

- ▶ Board Level Status Indicators
- ▶ Board Level Fault Indicators
- ▶ Circuit Troubleshooting Indicators
- ▶ Warning/Alarm Lights
- ▶ Backlighting of Overlays
- ▶ Post Lighting Switches and Keypads

Lumex Part Number	Die Material	Emitted Color	Peak (nm)	Lens	Operating Current (mA)	Operating TYP. Vf (V)	Brightness TYP. Mcd	@ mA	View Angle° 2θ	Component LED Used
HIGH BRIGHTNESS										
SSF-LXH2103SISID/3	AlInGaP	Super High Intensity Red	636	Red Diffused	5-25	2	100	20	60	SSL-LX3034SID
SSF-LXH2103SOSOD/3	AlInGaP	Super Orange	610	Orange Diffused	5-25	2	100	20	60	SSL-LX3034SOD
SSF-LXH2103SUGUGD3	AlInGaP	Super Ultra Green	574	Green Diffused	5-25	2.2	60	20	60	SSL-LX3034SUGD
SSF-LXH2103SYSYD/3	AlInGaP	Super Yellow	590	Yellow Diffused	5-25	2	100	20	60	SSL-LX3034SYD
SSF-LXH2103USBSBD3	InGaN/SiC	Ultra Super Blue	470	Blue Diffused	5-25	3.5	80	20	60	SSL-LX3034USBD

SSF-LXH2103XX/4 Series

T-3mm Dual Tower, 0.2" Leadframe Offset, 4mm Protrusion



FEATURES / OPTIONS

- ▶ State-of-the-Art, Chip Technology
- ▶ Easy Drop-In Board Installation
- ▶ Right Angle to the Board Position
- ▶ Choice of Colors and Lens Finishes
- ▶ Low Current Versions Available
- ▶ Color or Intensity Sorting Available
- ▶ Blinking LED
- ▶ With Internal Resistor for 5V and 12V Operation
- ▶ Black or Gray Holders for High Contrast
- ▶ Color Combinations

APPLICATIONS / USES

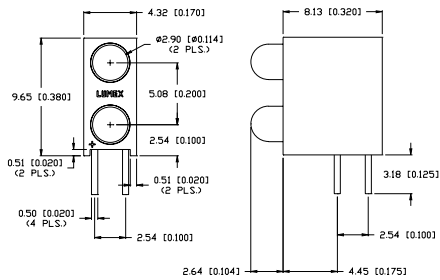
- ▶ Board Level Status Indicators
- ▶ Board Level Fault Indicators
- ▶ Circuit Troubleshooting Indicators
- ▶ Warning/Alarm Lights
- ▶ Backlighting of Overlays
- ▶ Post Lighting Switches and Keypads

Lumex Part Number	Die Material	Emitted Color	Peak (nm)	Lens	Operating Current (mA)	Operating TYP. Vf (V)	Brightness TYP. Mcd	@ mA	View Angle° 2θ	Component LED Used
HIGH BRIGHTNESS										
SSF-LXH2103SISID/4	AlInGaP	Super High Intensity Red	636	Red Diffused	5-25	2	100	20	60	SSL-LX3054SID
SSF-LXH2103SOSOD/4	AlInGaP	Super Orange	610	Orange Diffused	5-25	2	100	20	60	SSL-LX3054SOD
SSF-LXH2103SUGUGD4	AlInGaP	Super Ultra Green	574	Green Diffused	5-25	2.2	180	20	60	SSL-LX3054SUGD
SSF-LXH2103SYSYD/4	AlInGaP	Super Yellow	590	Yellow Diffused	5-25	2	250	20	60	SSL-LX3054SYD
SSF-LXH2103USBSBD4	InGaN/SiC	Ultra Super Blue	470	Blue Diffused	5-25	3.5	80	20	60	SSL-LX3054USBD

1
2
3
4
5
6
7
8
9
10
11
12
13
14
15
16
17
18
19
20
21
22
23
24
25
26
27
28
29

SSF-LXH240 Series

T-3mm Dual Tower with Stand-off, 0.175" Leadframe Offset



FEATURES / OPTIONS

- ▶ State-of-the-Art, Chip Technology
- ▶ Easy Drop-In Board Installation
- ▶ Right Angle to the Board Position
- ▶ Choice of Colors and Lens Finishes
- ▶ Low Current Versions Available
- ▶ Color or Intensity Sorting Available
- ▶ Blinking LED
- ▶ With Internal Resistor for 5V and 12V Operation
- ▶ Black or Gray Holders for High Contrast
- ▶ Color Combinations

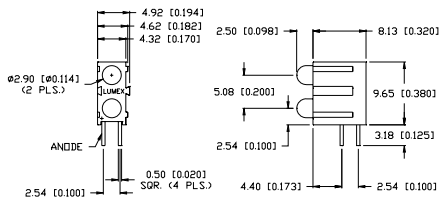
APPLICATIONS / USES

- ▶ Board Level Status Indicators
- ▶ Board Level Fault Indicators
- ▶ Circuit Troubleshooting Indicators
- ▶ Warning/Alarm Lights
- ▶ Backlighting of Overlays
- ▶ Post Lighting Switches and Keypads

Lumex Part Number	Die Material	Emitted Color	Peak (nm)	Lens	Operating Current (mA)	Operating TYP. Vf (V)	Brightness TYP. Mcd	@ mA	View Angle° 2θ	Component LED Used
HIGH BRIGHTNESS										
SSF-LXH240SISID	AlInGaP	Super High Intensity Red	636	Red Diffused	5-25	2	100	20	60	SSL-LX3044SID
SSF-LXH240SOSOD	AlInGaP	Super Orange	610	Orange Diffused	5-25	2	100	20	60	SSL-LX3044SOD
SSF-LXH240SUGSUGD	AlInGaP	Super Ultra Green	574	Green Diffused	5-25	2.2	60	20	60	SSL-LX3044SUGD
SSF-LXH240SYSYD	AlInGaP	Super Yellow	590	Yellow Diffused	5-25	2	100	20	60	SSL-LX3044SYD
SSF-LXH240USBUSBD	InGaN/SiC	Ultra Super Blue	470	Blue Diffused	5-25	3.5	200	20	60	SSL-LX3044USBD
STANDARD BRIGHTNESS										
SSF-LXH240GGD	GaP	Green	565	Green diffused	5-25	2.2	40	20	60	SSL-LX3044GD
SSF-LXH240IID	GaAsP	High Intensity Red	635	Red Diffused	5-25	2	50	20	60	SSL-LX3044ID
SSF-LXH240SRSRD	GaAlAs	Super Red	660	Red Diffused	5-25	1.7	150	20	60	SSL-LX3044SRD
SSF-LXH240YYD	GaAsP	Yellow	585	Yellow Diffused	5-25	2.1	40	20	60	SSL-LX3044YD

SSF-LXHM240 Series

T-3mm Dual Tower Mating with Stand-off, 0.175" Leadframe Offset



FEATURES / OPTIONS

- ▶ State-of-the-Art, Chip Technology
- ▶ Easy Drop-In Board Installation
- ▶ Right Angle to the Board Position
- ▶ Choice of Colors and Lens Finishes
- ▶ Low Current Versions Available
- ▶ Color or Intensity Sorting Available
- ▶ Blinking LED
- ▶ With Internal Resistor for 5V and 12V Operation
- ▶ Black or Gray Holders for High Contrast
- ▶ Color Combinations
- ▶ Mating Feature Allows for Multiple Positions

APPLICATIONS / USES

- ▶ Board Level Status Indicators
- ▶ Board Level Fault Indicators
- ▶ Circuit Troubleshooting Indicators
- ▶ Warning/Alarm Lights
- ▶ Backlighting of Overlays
- ▶ Post Lighting Switches and Keypads

Lumex Part Number	Die Material	Emitted Color	Peak (nm)	Lens	Operating Current (mA)	Operating TYP. Vf (V)	Brightness TYP. Mcd	@ mA	View Angle° 2θ	Component LED Used
HIGH BRIGHTNESS										
SSF-LXHM240SISID	AlInGaP	Super High Intensity Red	636	Red Diffused	5-25	2	100	20	60	SSL-LX3044SID
SSF-LXHM240SOSOD	AlInGaP	Super Orange	610	Orange Diffused	5-25	2	100	20	60	SSL-LX3044SOD
SSF-LXHM240SUGSUGD	AlInGaP	Super Ultra Green	574	Green Diffused	5-25	2.2	60	20	60	SSL-LX3044SUGD
SSF-LXHM240SYSYD	AlInGaP	Super Yellow	590	Yellow Diffused	5-25	2	100	20	60	SSL-LX3044SYD
SSF-LXHM240USBUSBD	InGaN/SiC	Ultra Super Blue	470	Blue Diffused	5-25	3.5	200	20	60	SSL-LX3044USBD



USA/Canada 1-800-278-5666
Asia +886-3-5821124

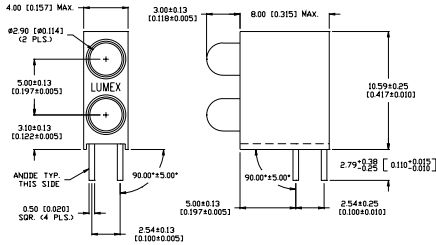


www.lumex.com



USA/Canada 1-847-359-8904
Asia +886-3-5821154

SSF-LXH241 Series T-3mm Dual Tower with Stand-off, Bottom LED Center 0.125" from PCB



FEATURES / OPTIONS

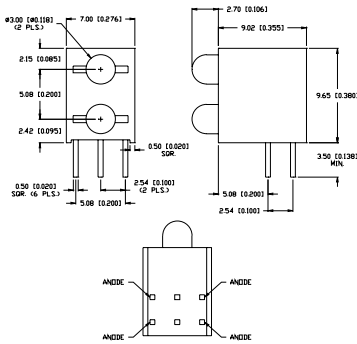
- ▶ State-of-the-Art, Chip Technology
- ▶ Easy Drop-In Board Installation
- ▶ Right Angle to the Board Position
- ▶ Choice of Colors and Lens Finishes
- ▶ Low Current Versions Available
- ▶ Color or Intensity Sorting Available
- ▶ Blinking LED
- ▶ With Internal Resistor for 5V and 12V Operation
- ▶ Black or Gray Holders for High Contrast
- ▶ Color Combinations

APPLICATIONS / USES

- ▶ Board Level Status Indicators
- ▶ Board Level Fault Indicators
- ▶ Circuit Troubleshooting Indicators
- ▶ Warning/Alarm Lights
- ▶ Backlighting of Overlays
- ▶ Post Lighting Switches and Keypads

Lumex Part Number	Die Material	Emitted Color	Peak (nm)	Lens	Operating Current (mA)	Operating TYP. Vf (V)	Brightness TYP. Mcd	@ mA	View Angle° 2θ	Component LED Used
HIGH BRIGHTNESS										
SSF-LXH241SISID	AllnGaP	Super High Intensity Red	636	Red Diffused	5-25	2	100	20	60	SSL-LX3044SID
SSF-LXH241SOSOD	AllnGaP	Super Orange	610	Orange Diffused	5-25	2	100	20	60	SSL-LX3044SOD
SSF-LXH241SUGSUGD	AllnGaP	Super Ultra Green	574	Green Diffused	5-25	2.2	60	20	60	SSL-LX3044SUGD
SSF-LXH241SYSYD	AllnGaP	Super Yellow	590	Yellow Diffused	5-25	2	100	20	60	SSL-LX3044SYD
SSF-LXH241USBUSBD	InGaN/SiC	Ultra Super Blue	470	Blue Diffused	5-25	3.5	200	20	60	SSL-LX3044USBD

SSF-LXH2109 Series T-3mm 3-Leaded, Dual Tower, Bi-Color



FEATURES / OPTIONS

- ▶ State-of-the-Art, Chip Technology
- ▶ Easy Drop-In Board Installation
- ▶ Right Angle to the Board Position
- ▶ Choice of Colors and Lens Finishes
- ▶ Low Current Versions Available
- ▶ Color or Intensity Sorting Available
- ▶ Blinking LED
- ▶ With Internal Resistor for 5V and 12V Operation
- ▶ Black or Gray Holders for High Contrast
- ▶ Color Combinations
- ▶ Common Anode Version

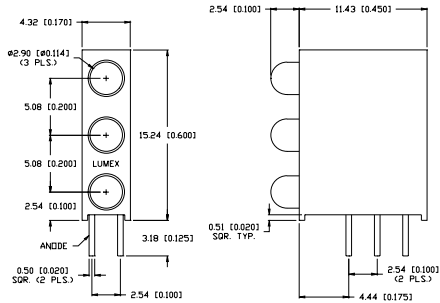
APPLICATIONS / USES

- ▶ Board Level Status Indicators
- ▶ Board Level Fault Indicators
- ▶ Circuit Troubleshooting Indicators
- ▶ Warning/Alarm Lights
- ▶ Backlighting of Overlays
- ▶ Post Lighting Switches and Keypads

Lumex Part Number	Die Material	Emitted Color	Peak (nm)	Lens	Operating Current (mA)	Operating TYP. Vf (V)	Brightness TYP. Mcd	@ mA	View Angle° 2θ	Component LED Used
SSF-LXH2109SISUGW	AllnGaP	Super High Intensity Red	636	Milky White	5-25	2	350	20	60	SSL-LX3059SISUGW
	AllnGaP	Super Ultra Green	574	Diffused	5-25	2.2	130	20		
SSF-LXH2109SISYW	AllnGaP	Super High Intensity Red	636	Milky White	5-25	2	250	20	60	SSL-LX3059SISYW
	AllnGaP	Super Yellow	590	Diffused	5-25	2	250	20		
SSF-LXH2109SYSUGW	AllnGaP	Super Yellow	590	Milky White	5-25	2	250	20	60	SSL-LX3059SYSUGW
	AllnGaP	Super Ultra Green	574	Diffused	5-25	2.2	80	20		

SSF-LXH340 Series

T-3mm Triple Tower



FEATURES / OPTIONS

- ▶ State-of-the-Art, Chip Technology
- ▶ Easy Drop-In Board Installation
- ▶ Right Angle to the Board Position
- ▶ Choice of Colors and Lens Finishes
- ▶ Low Current Versions Available
- ▶ Color or Intensity Sorting Available
- ▶ Blinking LED
- ▶ With Internal Resistor for 5V and 12V Operation
- ▶ Black or Gray Holders for High Contrast
- ▶ Color Combinations

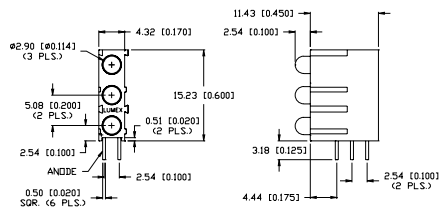
APPLICATIONS / USES

- ▶ Board Level Status Indicators
- ▶ Board Level Fault Indicators
- ▶ Circuit Troubleshooting Indicators
- ▶ Warning/Alarm Lights
- ▶ Backlighting of Overlays
- ▶ Post Lighting Switches and Keypads

Lumex Part Number	Die Material	Emitted Color	Peak (nm)	Lens	Operating Current (mA)	Operating TYP. Vf (V)	Brightness TYP. Mcd	@ mA	View Angle° 2θ	Component LED Used
HIGH BRIGHTNESS										
SSF-LXH340SISISID	AllnGaP	Super High Intensity Red	636	Red Diffused	5-25	2	100	20	60	SSL-LX3044SID
SSF-LXH340SOSOSOD	AllnGaP	Super Orange	610	Orange Diffused	5-25	2	100	20	60	SSL-LX3044SOD
SSF-LXH340SUGUGUGD	AllnGaP	Super Ultra Green	574	Green Diffused	5-25	2.2	60	20	60	SSL-LX3044SUGD
SSF-LXH340SYSYSYD	AllnGaP	Super Yellow	590	Yellow Diffused	5-25	2	100	20	60	SSL-LX3044SYD
SSF-LXH340USBSBSBD	InGaN/SiC	Ultra Super Blue	470	Blue Diffused	5-25	3.5	200	20	60	SSL-LX3044USBD

SSF-LXHM340 Series

T-3mm Triple Tower Mating



FEATURES / OPTIONS

- ▶ State-of-the-Art, Chip Technology
- ▶ Easy Drop-In Board Installation
- ▶ Right Angle to the Board Position
- ▶ Choice of Colors and Lens Finishes
- ▶ Low Current Versions Available
- ▶ Color or Intensity Sorting Available
- ▶ Blinking LED
- ▶ With Internal Resistor for 5V and 12V Operation
- ▶ Black or Gray Holders for High Contrast
- ▶ Color Combinations
- ▶ Mating Feature Allows for Multiple Positions

APPLICATIONS / USES

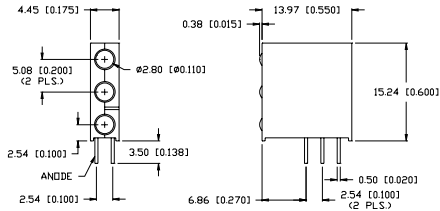
- ▶ Board Level Status Indicators
- ▶ Board Level Fault Indicators
- ▶ Circuit Troubleshooting Indicators
- ▶ Warning/Alarm Lights
- ▶ Backlighting of Overlays
- ▶ Post Lighting Switches and Keypads

Lumex Part Number	Die Material	Emitted Color	Peak (nm)	Lens	Operating Current (mA)	Operating TYP. Vf (V)	Brightness TYP. Mcd	@ mA	View Angle° 2θ	Component LED Used
HIGH BRIGHTNESS										
SSF-LXHM340SISISID	AllnGaP	Super High Intensity Red	636	Red Diffused	5-25	2	100	20	60	SSL-LX3044SID
SSF-LXHM340SOSOSOD	AllnGaP	Super Orange	610	Orange Diffused	5-25	2	100	20	60	SSL-LX3044SOD
SSF-LXHM340SUGUGUGD	AllnGaP	Super Ultra Green	574	Green Diffused	5-25	2.2	60	20	60	SSL-LX3044SUGD
SSF-LXHM340SYSYSYD	AllnGaP	Super Yellow	590	Yellow Diffused	5-25	2	100	20	60	SSL-LX3044SYD
SSF-LXHM340USBBBD	InGaN/SiC	Ultra Super Blue	470	Blue Diffused	5-25	3.5	200	20	60	SSL-LX3044USBD



SSF-LXH350 Series

T-3mm Triple Tower, LEDs Flush with Holder



FEATURES / OPTIONS

- ▶ State-of-the-Art, Chip Technology
- ▶ Easy Drop-In Board Installation
- ▶ Right Angle to the Board Position
- ▶ Choice of Colors and Lens Finishes
- ▶ Low Current Versions Available
- ▶ Color or Intensity Sorting Available
- ▶ Blinking LED
- ▶ With Internal Resistor for 5V and 12V Operation
- ▶ Black or Gray Holders for High Contrast
- ▶ Color Combinations

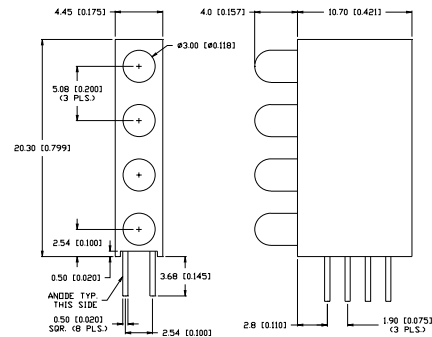
APPLICATIONS / USES

- ▶ Board Level Status Indicators
- ▶ Board Level Fault Indicators
- ▶ Circuit Troubleshooting Indicators
- ▶ Warning/Alarm Lights
- ▶ Backlighting of Overlays
- ▶ Post Lighting Switches and Keypads

Lumex Part Number	Die Material	Emitted Color	Peak (nm)	Lens	Operating Current (mA)	Operating TYP. Vf (V)	Brightness TYP. Mcd	@ mA	View Angle° 2θ	Component LED Used
HIGH BRIGHTNESS										
SSF-LXH350SID	AlInGaP	Super High Intensity Red	636	Red Diffused	5-25	2	100	20	60	SSL-LX3044SID
SSF-LXH350SOD	AlInGaP	Super Orange	610	Orange Diffused	5-25	2	100	20	60	SSL-LX3044SOD
SSF-LXH350SUGD	AlInGaP	Super Ultra Green	574	Green Diffused	5-25	2.2	60	20	60	SSL-LX3044SUGD
SSF-LXH350SYD	AlInGaP	Super Yellow	590	Yellow Diffused	5-25	2	100	20	60	SSL-LX3044SYD
SSF-LXH350USB	InGaN/SiC	Ultra Super Blue	470	Blue Diffused	5-25	3.5	200	20	60	SSL-LX3044USB

SSF-LXH475 Series

T-3mm Quad Tower



FEATURES / OPTIONS

- ▶ State-of-the-Art, Chip Technology
- ▶ Easy Drop-In Board Installation
- ▶ Right Angle to the Board Position
- ▶ Choice of Colors and Lens Finishes
- ▶ Low Current Versions Available
- ▶ Color or Intensity Sorting Available
- ▶ Blinking LED
- ▶ With Internal Resistor for 5V and 12V Operation
- ▶ Black or Gray Holders for High Contrast
- ▶ Color Combinations

APPLICATIONS / USES

- ▶ Board Level Status Indicators
- ▶ Board Level Fault Indicators
- ▶ Circuit Troubleshooting Indicators
- ▶ Warning/Alarm Lights
- ▶ Backlighting of Overlays
- ▶ Post Lighting Switches and Keypads

Lumex Part Number	Die Material	Emitted Color	Peak (nm)	Lens	Operating Current (mA)	Operating TYP. Vf (V)	Brightness TYP. Mcd	@ mA	View Angle° 2θ	Component LED Used
HIGH BRIGHTNESS										
SSF-LXH475SID	AlInGaP	Super High Intensity Red	636	Red Diffused	5-25	2	100	20	60	SSL-LX305F4SID
SSF-LXH475SOD	AlInGaP	Super Orange	610	Orange Diffused	5-25	2	100	20	60	SSL-LX305F4SOD
SSF-LXH475SUGD	AlInGaP	Super Ultra Green	574	Green Diffused	5-25	2.2	60	20	60	SSL-LX305F4SUGD
SSF-LXH475SYD	AlInGaP	Super Yellow	590	Yellow Diffused	5-25	2	100	20	60	SSL-LX305F4SYD
SSF-LXH475USB	InGaN/SiC	Ultra Super Blue	470	Blue Diffused	5-25	3.5	200	20	60	SSL-LX305F4USB



USA/Canada 1-800-278-5666
Asia +886-3-5821124



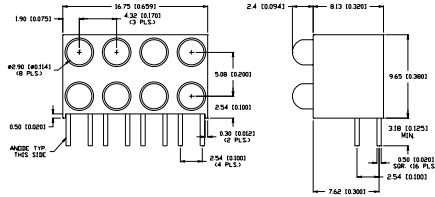
www.lumex.com



USA/Canada 1-847-359-8904
Asia +886-3-5821154

SSF-LXH42103 Series

T-3mm Quad Ranch, 2 High 4 Columns



FEATURES / OPTIONS

- ▶ State-of-the-Art, Chip Technology
- ▶ Easy Drop-In Board Installation
- ▶ Right Angle to the Board Position
- ▶ Choice of Colors and Lens Finishes
- ▶ Low Current Versions Available
- ▶ Color or Intensity Sorting Available
- ▶ Blinking LED
- ▶ With Internal Resistor for 5V and 12V Operation
- ▶ Black or Gray Holders for High Contrast
- ▶ Color Combinations

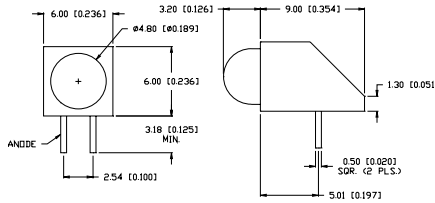
APPLICATIONS / USES

- ▶ Board Level Status Indicators
- ▶ Board Level Fault Indicators
- ▶ Circuit Troubleshooting Indicators
- ▶ Warning/Alarm Lights
- ▶ Backlighting of Overlays
- ▶ Post Lighting Switches and Keypads

Lumex Part Number	Die Material	Emitted Color	Peak (nm)	Lens	Operating Current (mA)	Operating TYP. Vf (V)	Brightness TYP. Mcd	@ mA	View Angle° 2θ	Component LED Used
HIGH BRIGHTNESS										
SSF-LXH42103SID	AllnGaP	Super High Intensity Red	636	Red Diffused	5-25	2	100	20	60	SSL-LX3044SID
SSF-LXH42103SOD	AllnGaP	Super Orange	610	Orange Diffused	5-25	2	100	20	60	SSL-LX3044SOD
SSF-LXH42103SUGD	AllnGaP	Super Ultra Green	574	Green Diffused	5-25	2.2	60	20	60	SSL-LX3044SUGD
SSF-LXH42103SYD	AllnGaP	Super Yellow	590	Yellow Diffused	5-25	2	100	20	60	SSL-LX3044SYD
SSF-LXH42103USBD	InGaN/SiC	Ultra Super Blue	470	Blue Diffused	5-25	3.5	200	20	60	SSL-LX3044USBD

SSF-LXH100 Series

T-5mm Single Level



FEATURES / OPTIONS

- ▶ State-of-the-Art, Chip Technology
- ▶ Easy Drop-In Board Installation
- ▶ Right Angle to the Board Position
- ▶ Choice of Colors and Lens Finishes
- ▶ Low Current Versions Available
- ▶ Color or Intensity Sorting Available
- ▶ Popular Style, Fast Delivery
- ▶ Blinking LED
- ▶ With Internal Resistor for 5V and 12V Operation
- ▶ Black or Gray Holders for High Contrast

APPLICATIONS / USES

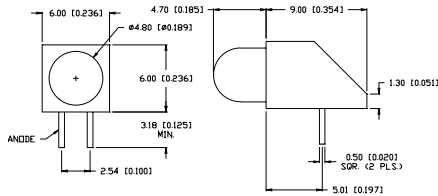
- ▶ Board Level Status Indicators
- ▶ Board Level Fault Indicators
- ▶ Circuit Troubleshooting Indicators
- ▶ Warning/Alarm Lights
- ▶ Backlighting of Overlays
- ▶ Post Lighting Switches and Keypads

Lumex Part Number	Die Material	Emitted Color	Peak (nm)	Lens	Operating Current (mA)	Operating TYP. Vf (V)	Brightness TYP. Mcd	@ mA	View Angle° 2θ	Component LED Used
HIGH BRIGHTNESS										
SSF-LXH100SID	AllnGaP	Super High Intensity Red	636	Red Diffused	5-25	2	700	20	60	SSL-LX507F3SID
SSF-LXH100SOD	AllnGaP	Super Orange	610	Orange Diffused	5-25	2	850	20	60	SSL-LX507F3SOD
SSF-LXH100SUGD	AllnGaP	Super Ultra Green	574	Green Diffused	5-25	2.2	170	20	60	SSL-LX507F3SUGD
SSF-LXH100SYD	AllnGaP	Super Yellow	590	Yellow Diffused	5-25	2	300	20	60	SSL-LX507F3SYD
SSF-LXH100USBD	InGaN/SiC	Ultra Super Blue	470	Blue Diffused	5-25	3.5	300	20	60	SSL-LX507F3USBD
SSF-LXH100UWW	InGaN/SiC	Ultra White	-	White Diffused	5-25	3.5	650	20	30	SSL-LX507F3UWW
STANDARD BRIGHTNESS										
SSF-LXH100GD	GaP	Green	565	Green diffused	5-25	2.2	30	20	60	SSL-LX507F3GD
SSF-LXH100ID	GaAsP	High Intensity Red	635	Red Diffused	5-25	2	30	20	60	SSL-LX507F3ID
SSF-LXH100SRD	GaAlAs	Super Red	660	Red Diffused	5-25	1.7	250	20	60	SSL-LX507F3SRD
SSF-LXH100YD	GaAsP	Yellow	585	Yellow Diffused	5-25	2.1	30	20	60	SSL-LX507F3YD



SSF-LXH100XX-01 Series

T-5mm Single Level, Long Protrusion



FEATURES / OPTIONS

- ▶ State-of-the-Art, Chip Technology
- ▶ Easy Drop-In Board Installation
- ▶ Right Angle to the Board Position
- ▶ Choice of Colors and Lens Finishes
- ▶ Low Current Versions Available
- ▶ Color or Intensity Sorting Available
- ▶ Blinking LED
- ▶ With Internal Resistor for 5V and 12V Operation
- ▶ Black or Gray Holders for High Contrast

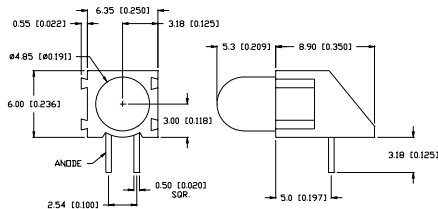
APPLICATIONS / USES

- ▶ Board Level Status Indicators
- ▶ Board Level Fault Indicators
- ▶ Circuit Troubleshooting Indicators
- ▶ Warning/Alarm Lights
- ▶ Backlighting of Overlays
- ▶ Post Lighting Switches and Keypads

Lumex Part Number	Die Material	Emitted Color	Peak (nm)	Lens	Operating Current (mA)	Operating TYP. Vf (V)	Brightness TYP. Mcd	@ mA	View Angle° 2θ	Component LED Used
HIGH BRIGHTNESS										
SSF-LXH100SID-01	AlInGaP	Super High Intensity Red	636	Red Diffused	5-25	2	700	20	60	SSL-LX509F3SID
SSF-LXH100SOD-01	AlInGaP	Super Orange	610	Orange Diffused	5-25	2	850	20	60	SSL-LX509F3SOD
SSF-LXH100SUGD-01	AlInGaP	Super Ultra Green	574	Green Diffused	5-25	2.2	170	20	60	SSL-LX509F3SUGD
SSF-LXH100SYD-01	AlInGaP	Super Yellow	590	Yellow Diffused	5-25	2	300	20	60	SSL-LX509F3SYD
SSF-LXH100USB-01	InGaN/SiC	Ultra Super Blue	470	Blue Diffused	5-25	3.5	300	20	60	SSL-LX509F3USB
SSF-LXH100UWW-01	InGaN/SiC	Ultra White	-	White Diffused	5-25	3.5	650	20	30	SSL-LX509F3UWW
STANDARD BRIGHTNESS										
SSF-LXH100GD-01	GaP	Green	565	Green diffused	5-25	2.2	30	20	60	SSL-LX509F3GD
SSF-LXH100ID-01	GaAsP	High Intensity Red	635	Red Diffused	5-25	2	30	20	60	SSL-LX509F3ID
SSF-LXH100SRD-01	GaAlAs	Super Red	660	Red Diffused	5-25	1.7	250	20	60	SSL-LX509F3SRD
SSF-LXH100YD-01	GaAsP	Yellow	585	Yellow Diffused	5-25	2.1	30	20	60	SSL-LX509F3YD

SSF-LXH100M Series

T-5mm Single Level Mating



FEATURES / OPTIONS

- ▶ State-of-the-Art, Chip Technology
- ▶ Easy Drop-In Board Installation
- ▶ Right Angle to the Board Position
- ▶ Choice of Colors and Lens Finishes
- ▶ Low Current Versions Available
- ▶ Color or Intensity Sorting Available
- ▶ Blinking LED
- ▶ With Internal Resistor for 5V and 12V Operation
- ▶ Black or Gray Holders for High Contrast
- ▶ Color Combinations
- ▶ Mating Feature Allows for Multiple Positions

APPLICATIONS / USES

- ▶ Board Level Status Indicators
- ▶ Board Level Fault Indicators
- ▶ Circuit Troubleshooting Indicators
- ▶ Warning/Alarm Lights
- ▶ Backlighting of Overlays
- ▶ Post Lighting Switches and Keypads

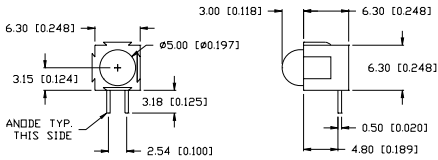
Lumex Part Number	Die Material	Emitted Color	Peak (nm)	Lens	Operating Current (mA)	Operating TYP. Vf (V)	Brightness TYP. Mcd	@ mA	View Angle° 2θ	Component LED Used
HIGH BRIGHTNESS										
SSF-LXH100MSID	AlInGaP	Super High Intensity Red	636	Red Diffused	5-25	2	700	20	60	SSL-LX509F3SID
SSF-LXH100MSOD	AlInGaP	Super Orange	610	Orange Diffused	5-25	2	850	20	60	SSL-LX509F3SOD
SSF-LXH100MSUGD	AlInGaP	Super Ultra Green	574	Green Diffused	5-25	2.2	170	20	60	SSL-LX509F3SUGD
SSF-LXH100MSYD	AlInGaP	Super Yellow	590	Yellow Diffused	5-25	2	300	20	60	SSL-LX509F3SYD
SSF-LXH100MUSB	InGaN/SiC	Ultra Super Blue	470	Blue Diffused	5-25	3.5	300	20	60	SSL-LX509F3USB
SSF-LXH100MUWW	InGaN/SiC	Ultra White	-	White Diffused	5-25	3.5	650	20	30	SSL-LX509F3UWW



1
2
3
4
5
6
7
8
9
10
11
12
13
14
15
16
17
18
19
20
21
22
23
24
25
26
27
28
29

SSF-LXH101M Series

T-5mm Single Level Mating, Flat Back Holder



FEATURES / OPTIONS

- ▶ State-of-the-Art, Chip Technology
- ▶ Easy Drop-In Board Installation
- ▶ Right Angle to the Board Position
- ▶ Choice of Colors and Lens Finishes
- ▶ Low Current Versions Available
- ▶ Color or Intensity Sorting Available
- ▶ Straight Leads
- ▶ Blinking LED
- ▶ With Internal Resistor for 5V and 12V Operation
- ▶ Black or Gray Holders for High Contrast
- ▶ Color Combinations
- ▶ Mating Feature Allows for Multiple Positions

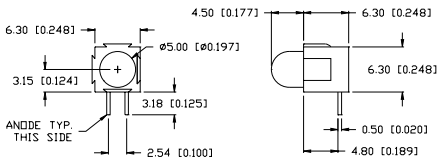
APPLICATIONS / USES

- ▶ Board Level Status Indicators
- ▶ Board Level Fault Indicators
- ▶ Circuit Troubleshooting Indicators
- ▶ Warning/Alarm Lights
- ▶ Backlighting of Overlays
- ▶ Post Lighting Switches and Keypads

Lumex Part Number	Die Material	Emitted Color	Peak (nm)	Lens	Operating Current (mA)	Operating TYP. Vf (V)	Brightness TYP. Mcd	@ mA	View Angle° 2θ	Component LED Used
HIGH BRIGHTNESS										
SSF-LXH101MSID	AllnGaP	Super High Intensity Red	636	Red Diffused	5-25	2	700	20	60	SSL-LX507F3SID
SSF-LXH101MSOD	AllnGaP	Super Orange	610	Orange Diffused	5-25	2	850	20	60	SSL-LX507F3SOD
SSF-LXH101MSUGD	AllnGaP	Super Ultra Green	574	Green Diffused	5-25	2.2	170	20	60	SSL-LX507F3SUGD
SSF-LXH101MSYD	AllnGaP	Super Yellow	590	Yellow Diffused	5-25	2	300	20	60	SSL-LX507F3SYD
SSF-LXH101MUSBD	InGaN/SiC	Ultra Super Blue	470	Blue Diffused	5-25	3.5	300	20	60	SSL-LX507F3USBD

SSF-LXH101M-1 Series

T-5mm Single Level Mating, Flat Back Holder, Long Protrusion



FEATURES / OPTIONS

- ▶ State-of-the-Art, Chip Technology
- ▶ Easy Drop-In Board Installation
- ▶ Right Angle to the Board Position
- ▶ Choice of Colors and Lens Finishes
- ▶ Low Current Versions Available
- ▶ Color or Intensity Sorting Available
- ▶ Straight Leads
- ▶ Blinking LED
- ▶ With Internal Resistor for 5V and 12V Operation
- ▶ Black or Gray Holders for High Contrast
- ▶ Color Combinations
- ▶ Mating Feature Allows for Multiple Positions

APPLICATIONS / USES

- ▶ Board Level Status Indicators
- ▶ Board Level Fault Indicators
- ▶ Circuit Troubleshooting Indicators
- ▶ Warning/Alarm Lights
- ▶ Backlighting of Overlays
- ▶ Post Lighting Switches and Keypads

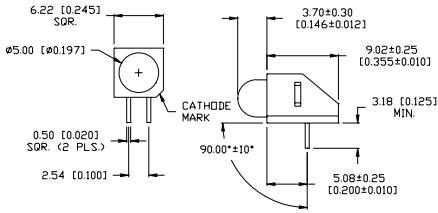
Lumex Part Number	Die Material	Emitted Color	Peak (nm)	Lens	Operating Current (mA)	Operating TYP. Vf (V)	Brightness TYP. Mcd	@ mA	View Angle° 2θ	Component LED Used
HIGH BRIGHTNESS										
SSF-LXH101MSID-1	AllnGaP	Super High Intensity Red	636	Red Diffused	5-25	2	700	20	60	SSL-LX509F3SID
SSF-LXH101MSOD-1	AllnGaP	Super Orange	610	Orange Diffused	5-25	2	850	20	60	SSL-LX509F3SOD
SSF-LXH101MSUGD-1	AllnGaP	Super Ultra Green	574	Green Diffused	5-25	2.2	170	20	60	SSL-LX509F3SUGD
SSF-LXH101MSYD-1	AllnGaP	Super Yellow	590	Yellow Diffused	5-25	2	300	20	60	SSL-LX509F3SYD
SSF-LXH101MUSBD-1	InGaN/SiC	Ultra Super Blue	470	Blue Diffused	5-25	3.5	300	20	60	SSL-LX509F3USBD



1
2
3
4
5
6
7
8
9
10
11
12
13
14
15
16
17
18
19
20
21
22
23
24
25
26
27
28
29

SSF-LXH104 Series

T-5mm Single Level, Rear Loading Housing



FEATURES / OPTIONS

- ▶ State-of-the-Art, Chip Technology
- ▶ Easy Drop-In Board Installation
- ▶ Right Angle to the Board Position
- ▶ Choice of Colors and Lens Finishes
- ▶ Low Current Versions Available
- ▶ Color or Intensity Sorting Available
- ▶ Blinking LED
- ▶ With Internal Resistor for 5V and 12V Operation
- ▶ Black or Gray Holders for High Contrast

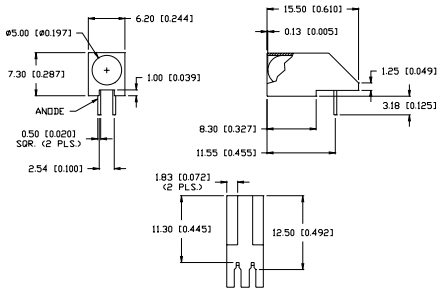
APPLICATIONS / USES

- ▶ Board Level Status Indicators
- ▶ Board Level Fault Indicators
- ▶ Circuit Troubleshooting Indicators
- ▶ Warning/Alarm Lights
- ▶ Backlighting of Overlays
- ▶ Post Lighting Switches and Keypads

Lumex Part Number	Die Material	Emitted Color	Peak (nm)	Lens	Operating Current (mA)	Operating TYP. Vf (V)	Brightness TYP. Mcd	@ mA	View Angle° 2θ	Component LED Used
HIGH BRIGHTNESS										
SSF-LXH104SID	AllnGaP	Super High Intensity Red	636	Red Diffused	5-25	2	700	20	60	SSL-LX5093SID
SSF-LXH104SOD	AllnGaP	Super Orange	610	Orange Diffused	5-25	2	850	20	60	SSL-LX5093SOD
SSF-LXH104SUGD	AllnGaP	Super Ultra Green	574	Green Diffused	5-25	2.2	170	20	60	SSL-LX5093SUGD
SSF-LXH104SYD	AllnGaP	Super Yellow	590	Yellow Diffused	5-25	2	300	20	60	SSL-LX5093SYD
SSF-LXH104USBD	InGaN/SiC	Ultra Super Blue	470	Blue Diffused	5-25	3.5	300	20	60	SSL-LX5093USBD
SSF-LXH104UWW	InGaN/SiC	Ultra White	-	White Diffused	5-25	3.5	650	20	30	SSL-LX5093UWW

SSF-LXH1071 Series

T-5mm Single Level, Shrouded Light Pipe Holder, Horizontal



FEATURES / OPTIONS

- ▶ State-of-the-Art, Chip Technology
- ▶ Easy Drop-In Board Installation
- ▶ Right Angle to the Board Position
- ▶ Choice of Colors and Lens Finishes
- ▶ Low Current Versions Available
- ▶ Color or Intensity Sorting Available
- ▶ Light Reflecting Holder
- ▶ Blinking LED
- ▶ With Internal Resistor for 5V and 12V Operation
- ▶ Black or Gray Holders for High Contrast
- ▶ White Polycarbonate Holder

APPLICATIONS / USES

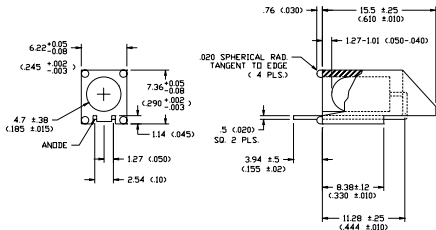
- ▶ Board Level Status Indicators
- ▶ Board Level Fault Indicators
- ▶ Circuit Troubleshooting Indicators
- ▶ Warning/Alarm Lights
- ▶ Backlighting of Overlays
- ▶ Post Lighting Switches and Keypads

Lumex Part Number	Die Material	Emitted Color	Peak (nm)	Lens	Operating Current (mA)	Operating TYP. Vf (V)	Brightness TYP. Mcd	@ mA	View Angle° 2θ	Component LED Used
HIGH BRIGHTNESS										
SSF-LXH1071SID	AllnGaP	Super High Intensity Red	636	Red Diffused	5-25	2	700	20	60	SSL-LX509F3SID
SSF-LXH1071SOD	AllnGaP	Super Orange	610	Orange Diffused	5-25	2	850	20	60	SSL-LX509F3SOD
SSF-LXH1071SUGD	AllnGaP	Super Ultra Green	574	Green Diffused	5-25	2.2	170	20	60	SSL-LX509F3SUGD
SSF-LXH1071SYD	AllnGaP	Super Yellow	590	Yellow Diffused	5-25	2	300	20	60	SSL-LX509F3SYD
SSF-LXH1071USBD	InGaN/SiC	Ultra Super Blue	470	Blue Diffused	5-25	3.5	300	20	60	SSL-LX509F3USBD



SSF-LXH1071V Series

T-5mm Single Level, Shrouded Light Pipe Holder, Vertical



FEATURES / OPTIONS

- ▶ State-of-the-Art, Chip Technology
- ▶ Easy Drop-In Board Installation
- ▶ Right Angle to the Board Position
- ▶ Choice of Colors and Lens Finishes
- ▶ Low Current Versions Available
- ▶ Color or Intensity Sorting Available
- ▶ Light Reflecting Holder
- ▶ Blinking LED
- ▶ With Internal Resistor for 5V and 12V Operation
- ▶ Black or Gray Holders for High Contrast
- ▶ White Polycarbonate Holder

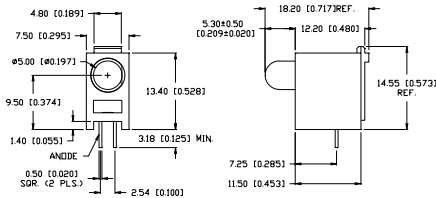
APPLICATIONS / USES

- ▶ Board Level Status Indicators
- ▶ Board Level Fault Indicators
- ▶ Circuit Troubleshooting Indicators
- ▶ Warning/Alarm Lights
- ▶ Backlighting of Overlays
- ▶ Post Lighting Switches and Keypads

Lumex Part Number	Die Material	Emitted Color	Peak (nm)	Lens	Operating Current (mA)	Operating TYP. Vf (V)	Brightness TYP. Mcd	@ mA	View Angle° 2θ	Component LED Used
HIGH BRIGHTNESS										
SSF-LXH1071V SID	AllnGaP	Super High Intensity Red	636	Red Diffused	5-25	2	700	20	60	SSL-LX509F3SID
SSF-LXH1071V SOD	AllnGaP	Super Orange	610	Orange Diffused	5-25	2	850	20	60	SSL-LX509F3SOD
SSF-LXH1071V SUGD	AllnGaP	Super Ultra Green	574	Green Diffused	5-25	2.2	170	20	60	SSL-LX509F3SUGD
SSF-LXH1071V SYD	AllnGaP	Super Yellow	590	Yellow Diffused	5-25	2	300	20	60	SSL-LX509F3SYD
SSF-LXH1071V USBD	InGaN/SiC	Ultra Super Blue	470	Blue Diffused	5-25	3.5	300	20	60	SSL-LX509F3USB

SSF-LXH140 Series

T-5mm Single Level, Snap-In, Open Hinge Holder



FEATURES / OPTIONS

- ▶ State-of-the-Art, Chip Technology
- ▶ Easy Drop-In Board Installation
- ▶ Right Angle to the Board Position
- ▶ Choice of Colors and Lens Finishes
- ▶ Low Current Versions Available
- ▶ Color or Intensity Sorting Available
- ▶ Blinking LED
- ▶ With Internal Resistor for 5V and 12V Operation
- ▶ Black or Gray Holders for High Contrast

APPLICATIONS / USES

- ▶ Board Level Status Indicators
- ▶ Board Level Fault Indicators
- ▶ Circuit Troubleshooting Indicators
- ▶ Warning/Alarm Lights
- ▶ Backlighting of Overlays
- ▶ Post Lighting Switches and Keypads

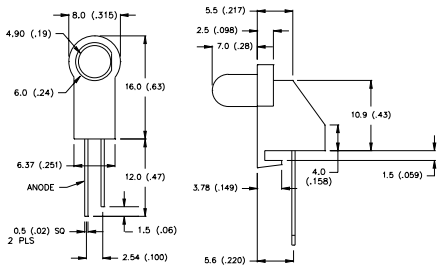
Lumex Part Number	Die Material	Emitted Color	Peak (nm)	Lens	Operating Current (mA)	Operating TYP. Vf (V)	Brightness TYP. Mcd	@ mA	View Angle° 2θ	Component LED Used
HIGH BRIGHTNESS										
SSF-LXH140SID	AllnGaP	Super High Intensity Red	636	Red Diffused	5-25	2	700	20	60	SSL-LX5093SID
SSF-LXH140SOD	AllnGaP	Super Orange	610	Orange Diffused	5-25	2	850	20	60	SSL-LX5093SOD
SSF-LXH140SUGD	AllnGaP	Super Ultra Green	574	Green Diffused	5-25	2.2	170	20	60	SSL-LX5093SUGD
SSF-LXH140SYD	AllnGaP	Super Yellow	590	Yellow Diffused	5-25	2	300	20	60	SSL-LX5093SYD
SSF-LXH140USB	InGaN/SiC	Ultra Super Blue	470	Blue Diffused	5-25	3.5	300	20	60	SSL-LX5093USB



1
2
3
4
5
6
7
8
9
10
11
12
13
14
15
16
17
18
19
20
21
22
23
24
25
26
27
28
29

SSF-LXH141 Series

T-5mm Single Level, Edge-of-PCB Retainer



FEATURES / OPTIONS

- ▶ State-of-the-Art, Chip Technology
- ▶ Easy Drop-In Board Installation
- ▶ Right Angle to the Board Position
- ▶ Choice of Colors and Lens Finishes
- ▶ Low Current Versions Available
- ▶ Color or Intensity Sorting Available
- ▶ Blinking LED
- ▶ With Internal Resistor for 5V and 12V Operation
- ▶ Black or Gray Holders for High Contrast

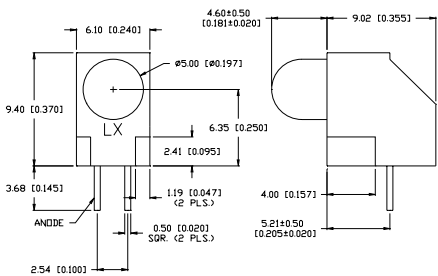
APPLICATIONS / USES

- ▶ Board Level Status Indicators
- ▶ Board Level Fault Indicators
- ▶ Circuit Troubleshooting Indicators
- ▶ Warning/Alarm Lights
- ▶ Backlighting of Overlays
- ▶ Post Lighting Switches and Keypads

Lumex Part Number	Die Material	Emitted Color	Peak (nm)	Lens	Operating Current (mA)	Operating TYP. Vf (V)	Brightness TYP. Mcd	@ mA	View Angle° 2θ	Component LED Used
HIGH BRIGHTNESS										
SSF-LXH141SID	AlInGaP	Super High Intensity Red	636	Red Diffused	5-25	2	700	20	60	SSL-LX5093SID
SSF-LXH141SOD	AlInGaP	Super Orange	610	Orange Diffused	5-25	2	850	20	60	SSL-LX5093SOD
SSF-LXH141SUGD	AlInGaP	Super Ultra Green	574	Green Diffused	5-25	2.2	170	20	60	SSL-LX5093SUGD
SSF-LXH141SYD	AlInGaP	Super Yellow	590	Yellow Diffused	5-25	2	300	20	60	SSL-LX5093SYD
SSF-LXH141USBD	InGaN/SiC	Ultra Super Blue	470	Blue Diffused	5-25	3.5	300	20	60	SSL-LX5093USBD

SSF-LXH1501 Series

T-5mm Single Level, LED Center 0.25" from PCB



FEATURES / OPTIONS

- ▶ State-of-the-Art, Chip Technology
- ▶ Easy Drop-In Board Installation
- ▶ Right Angle to the Board Position
- ▶ Choice of Colors and Lens Finishes
- ▶ Low Current Versions Available
- ▶ Color or Intensity Sorting Available
- ▶ Blinking LED
- ▶ With Internal Resistor for 5V and 12V Operation
- ▶ Black or Gray Holders for High Contrast

APPLICATIONS / USES

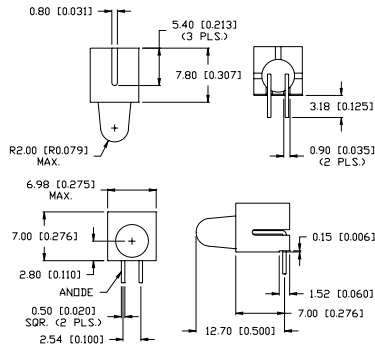
- ▶ Board Level Status Indicators
- ▶ Board Level Fault Indicators
- ▶ Circuit Troubleshooting Indicators
- ▶ Warning/Alarm Lights
- ▶ Backlighting of Overlays
- ▶ Post Lighting Switches and Keypads

Lumex Part Number	Die Material	Emitted Color	Peak (nm)	Lens	Operating Current (mA)	Operating TYP. Vf (V)	Brightness TYP. Mcd	@ mA	View Angle° 2θ	Component LED Used
HIGH BRIGHTNESS										
SSF-LXH1501SID	AlInGaP	Super High Intensity Red	636	Red Diffused	5-25	2	700	20	60	SSL-LX509F3SID
SSF-LXH1501SOD	AlInGaP	Super Orange	610	Orange Diffused	5-25	2	850	20	60	SSL-LX509F3SOD
SSF-LXH1501SUGD	AlInGaP	Super Ultra Green	574	Green Diffused	5-25	2.2	170	20	60	SSL-LX509F3SUGD
SSF-LXH1501SYD	AlInGaP	Super Yellow	590	Yellow Diffused	5-25	2	300	20	60	SSL-LX509F3SYD
SSF-LXH1501USBD	InGaN/SiC	Ultra Super Blue	470	Blue Diffused	5-25	3.5	300	20	60	SSL-LX509F3USBD



SSF-LXH16139 Series

T-5mm Single Level, Short Holder Body, Tapered LED



FEATURES / OPTIONS

- ▶ State-of-the-Art, Chip Technology
- ▶ Easy Drop-In Board Installation
- ▶ Right Angle to the Board Position
- ▶ Choice of Colors and Lens Finishes
- ▶ Low Current Versions Available
- ▶ Color or Intensity Sorting Available
- ▶ Blinking LED
- ▶ With Internal Resistor for 5V and 12V Operation
- ▶ Black or Gray Holders for High Contrast

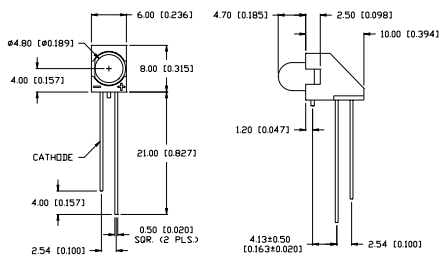
APPLICATIONS / USES

- ▶ Board Level Status Indicators
- ▶ Board Level Fault Indicators
- ▶ Circuit Troubleshooting Indicators
- ▶ Warning/Alarm Lights
- ▶ Backlighting of Overlays
- ▶ Post Lighting Switches and Keypads

Lumex Part Number	Die Material	Emitted Color	Peak (nm)	Lens	Operating Current (mA)	Operating TYP. Vf (V)	Brightness TYP. mcd	@ mA	View Angle° 2θ	Component LED Used
HIGH BRIGHTNESS										
SSF-LXH16139SID	AllnGaP	Super High Intensity Red	636	Red Diffused	5-25	2	700	20	60	SSL-LX5049F3SID
SSF-LXH16139SOD	AllnGaP	Super Orange	610	Orange Diffused	5-25	2	850	20	60	SSL-LX5049F3SOD
SSF-LXH16139SUGD	AllnGaP	Super Ultra Green	574	Green Diffused	5-25	2.2	170	20	60	SSL-LX5049F3SUGD
SSF-LXH16139SYD	AllnGaP	Super Yellow	590	Yellow Diffused	5-25	2	300	20	60	SSL-LX5049F3SYD
SSF-LXH16139USBD	InGaN/SiC	Ultra Super Blue	470	Blue Diffused	5-25	3.5	300	20	60	SSL-LX5049F3USBD

SSF-LXH2350 Series

T-5mm Single Level, Offset Cathode Lead



FEATURES / OPTIONS

- ▶ State-of-the-Art, Chip Technology
- ▶ Easy Drop-In Board Installation
- ▶ Right Angle to the Board Position
- ▶ Choice of Colors and Lens Finishes
- ▶ Low Current Versions Available
- ▶ Color or Intensity Sorting Available
- ▶ Blinking LED
- ▶ With Internal Resistor for 5V and 12V Operation
- ▶ Black or Gray Holders for High Contrast

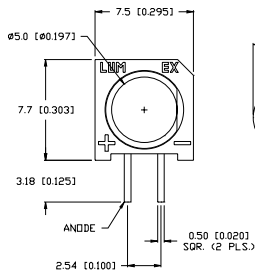
APPLICATIONS / USES

- ▶ Board Level Status Indicators
- ▶ Board Level Fault Indicators
- ▶ Circuit Troubleshooting Indicators
- ▶ Warning/Alarm Lights
- ▶ Backlighting of Overlays
- ▶ Post Lighting Switches and Keypads

Lumex Part Number	Die Material	Emitted Color	Peak (nm)	Lens	Operating Current (mA)	Operating TYP. Vf (V)	Brightness TYP. mcd	@ mA	View Angle° 2θ	Component LED Used
HIGH BRIGHTNESS										
SSF-LXH2350SID	AllnGaP	Super High Intensity Red	636	Red Diffused	5-25	2	700	20	60	SSL-LX4073SID
SSF-LXH2350SOD	AllnGaP	Super Orange	610	Orange Diffused	5-25	2	850	20	60	SSL-LX4073SOD
SSF-LXH2350SUGD	AllnGaP	Super Ultra Green	574	Green Diffused	5-25	2.2	170	20	60	SSL-LX4073SUGD
SSF-LXH2350SYD	AllnGaP	Super Yellow	590	Yellow Diffused	5-25	2	300	20	60	SSL-LX4073SYD
SSF-LXH2350USBD	InGaN/SiC	Ultra Super Blue	470	Blue Diffused	5-25	3.5	300	20	60	SSL-LX4073USBD

SSF-LXH2355 Series

T-5mm Single Level, Long Protrusion



FEATURES / OPTIONS

- ▶ State-of-the-Art, Chip Technology
- ▶ Easy Drop-In Board Installation
- ▶ Right Angle to the Board Position
- ▶ Choice of Colors and Lens Finishes
- ▶ Low Current Versions Available
- ▶ Color or Intensity Sorting Available
- ▶ Blinking LED
- ▶ With Internal Resistor for 5V and 12V Operation
- ▶ Black or Gray Holders for High Contrast

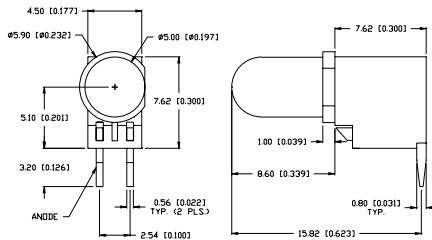
APPLICATIONS / USES

- ▶ Board Level Status Indicators
- ▶ Board Level Fault Indicators
- ▶ Circuit Troubleshooting Indicators
- ▶ Warning/Alarm Lights
- ▶ Backlighting of Overlays
- ▶ Post Lighting Switches and Keypads

Lumex Part Number	Die Material	Emitted Color	Peak (nm)	Lens	Operating Current (mA)	Operating TYP. Vf (V)	Brightness TYP. Mcd	@ mA	View Angle° 2θ	Component LED Used
HIGH BRIGHTNESS										
SSF-LXH2355SID	AlInGaP	Super High Intensity Red	636	Red Diffused	5-25	2	700	20	60	SSL-LX5093SID
SSF-LXH2355SOD	AlInGaP	Super Orange	610	Orange Diffused	5-25	2	850	20	60	SSL-LX5093SOD
SSF-LXH2355SUGD	AlInGaP	Super Ultra Green	574	Green Diffused	5-25	2.2	170	20	60	SSL-LX5093SUGD
SSF-LXH2355SYD	AlInGaP	Super Yellow	590	Yellow Diffused	5-25	2	300	20	60	SSL-LX5093SYD
SSF-LXH2355USBD	InGaN/SiC	Ultra Super Blue	470	Blue Diffused	5-25	3.5	300	20	60	SSL-LX5093USBD

SSF-LXH4RA5 Series

T-5mm Single Level Relampable, Socket Like Housing



FEATURES / OPTIONS

- ▶ State-of-the-Art, Chip Technology
- ▶ Easy Drop-In Board Installation
- ▶ Right Angle to the Board Position
- ▶ Choice of Colors and Lens Finishes
- ▶ Low Current Versions Available
- ▶ Color or Intensity Sorting Available
- ▶ Relampable LED Socket
- ▶ Blinking LED
- ▶ With Internal Resistor for 5V and 12V Operation

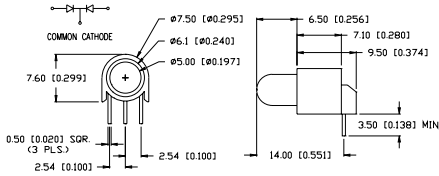
APPLICATIONS / USES

- ▶ Board Level Status Indicators
- ▶ Board Level Fault Indicators
- ▶ Circuit Troubleshooting Indicators
- ▶ Warning/Alarm Lights
- ▶ Backlighting of Overlays
- ▶ Post Lighting Switches and Keypads

Lumex Part Number	Die Material	Emitted Color	Peak (nm)	Lens	Operating Current (mA)	Operating TYP. Vf (V)	Brightness TYP. Mcd	@ mA	View Angle° 2θ	Component LED Used
HIGH BRIGHTNESS										
SSF-LXH4RA5SID	AlInGaP	Super High Intensity Red	636	Red Diffused	5-25	2	700	20	60	SSL-LX5093SID
SSF-LXH4RA5SOD	AlInGaP	Super Orange	610	Orange Diffused	5-25	2	850	20	60	SSL-LX5093SOD
SSF-LXH4RA5SUGD	AlInGaP	Super Ultra Green	574	Green Diffused	5-25	2.2	170	20	60	SSL-LX5093SUGD
SSF-LXH4RA5SYD	AlInGaP	Super Yellow	590	Yellow Diffused	5-25	2	300	20	60	SSL-LX5093SYD
SSF-LXH4RA5USBD	InGaN/SiC	Ultra Super Blue	470	Blue Diffused	5-25	3.5	300	20	60	SSL-LX5093USBD

SSF-LXH139 Series

T-5mm 3-Leaded, Single Level, Bi-Color



FEATURES / OPTIONS

- ▶ State-of-the-Art, Chip Technology
- ▶ Easy Drop-In Board Installation
- ▶ Right Angle to the Board Position
- ▶ Choice of Colors and Lens Finishes
- ▶ Low Current Versions Available
- ▶ Color or Intensity Sorting Available
- ▶ Blinking LED
- ▶ With Internal Resistor for 5V and 12V Operation
- ▶ Black or Gray Holders for High Contrast
- ▶ Common Anode Version

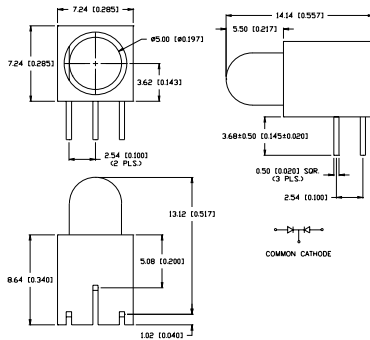
APPLICATIONS / USES

- ▶ Board Level Status Indicators
- ▶ Board Level Fault Indicators
- ▶ Circuit Troubleshooting Indicators
- ▶ Warning/Alarm Lights
- ▶ Backlighting of Overlays
- ▶ Post Lighting Switches and Keypads

Lumex Part Number	Die Material	Emitted Color	Peak (nm)	Lens	Operating Current (mA)	Operating TYP. Vf (V)	Brightness TYP. Mcd	@ mA	View Angle° 2θ	Component LED Used
SSF-LXH139SISUGW	AlInGaP	Super High Intensity Red	636	Milky White	5-25	2	700	20	60	SSL-LX5099SISUGW
	AlInGaP	Super Ultra Green	574	Diffused	5-25	2.2	200	20		
SSF-LXH139SISYW	AlInGaP	Super High Intensity Red	636	Milky White	5-25	2	800	20	60	SSL-LX5099SISYW
	AlInGaP	Super Yellow	590	Diffused	5-25	2	400	20		
SSF-LXH139SYSUGW	AlInGaP	Super Yellow	590	Milky White	5-25	2	400	20	60	SSL-LX5099SYSUGW
	AlInGaP	Super Ultra Green	574	Diffused	5-25	2.2	200	20		

SSF-LXH169 Series

T-5mm 3-Leaded, Single Level, Bi-Color, Offset Cathode Lead



FEATURES / OPTIONS

- ▶ State-of-the-Art, Chip Technology
- ▶ Easy Drop-In Board Installation
- ▶ Right Angle to the Board Position
- ▶ Choice of Colors and Lens Finishes
- ▶ Low Current Versions Available
- ▶ Color or Intensity Sorting Available
- ▶ Blinking LED
- ▶ With Internal Resistor for 5V and 12V Operation
- ▶ Black or Gray Holders for High Contrast
- ▶ Common Anode Version

APPLICATIONS / USES

- ▶ Board Level Status Indicators
- ▶ Board Level Fault Indicators
- ▶ Circuit Troubleshooting Indicators
- ▶ Warning/Alarm Lights
- ▶ Backlighting of Overlays
- ▶ Post Lighting Switches and Keypads

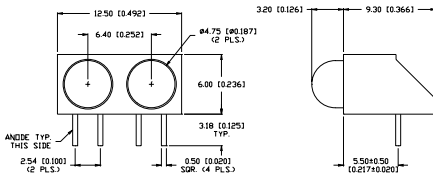
Lumex Part Number	Die Material	Emitted Color	Peak (nm)	Lens	Operating Current (mA)	Operating TYP. Vf (V)	Brightness TYP. Mcd	@ mA	View Angle° 2θ	Component LED Used
SSF-LXH169SISUGW	AlInGaP	Super High Intensity Red	636	Milky White	5-25	2	700	20	60	SSL-LX5099SISUGW/R
	AlInGaP	Super Ultra Green	574	Diffused	5-25	2.2	200	20		
SSF-LXH169SISYW	AlInGaP	Super High Intensity Red	636	Milky White	5-25	2	800	20	60	SSL-LX5099SISYW/R
	AlInGaP	Super Yellow	590	Diffused	5-25	2	400	20		
SSF-LXH169SYSUGW	AlInGaP	Super Yellow	590	Milky White	5-25	2	400	20	60	SSL-LX5099SYSUGW/R
	AlInGaP	Super Ultra Green	574	Diffused	5-25	2.2	200	20		



1
2
3
4
5
6
7
8
9
10
11
12
13
14
15
16
17
18
19
20
21
22
23
24
25
26
27
28
29

SSF-LXH2100 Series

T-5mm Single Level, Dual Ranch



FEATURES / OPTIONS

- ▶ State-of-the-Art, Chip Technology
- ▶ Easy Drop-In Board Installation
- ▶ Right Angle to the Board Position
- ▶ Choice of Colors and Lens Finishes
- ▶ Low Current Versions Available
- ▶ Color or Intensity Sorting Available
- ▶ Blinking LED
- ▶ With Internal Resistor for 5V and 12V Operation
- ▶ Black or Gray Holders for High Contrast
- ▶ Color Combinations

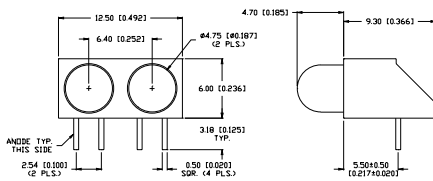
APPLICATIONS / USES

- ▶ Board Level Status Indicators
- ▶ Board Level Fault Indicators
- ▶ Circuit Troubleshooting Indicators
- ▶ Warning/Alarm Lights
- ▶ Backlighting of Overlays
- ▶ Post Lighting Switches and Keypads

Lumex Part Number	Die Material	Emitted Color	Peak (nm)	Lens	Operating Current (mA)	Operating TYP. Vf (V)	Brightness TYP. Mcd	@ mA	View Angle° 2θ	Component LED Used
HIGH BRIGHTNESS										
SSF-LXH2100SID	AllnGaP	Super High Intensity Red	636	Red Diffused	5-25	2	700	20	60	SSL-LX507F3SID
SSF-LXH2100SOD	AllnGaP	Super Orange	610	Orange Diffused	5-25	2	850	20	60	SSL-LX507F3SOD
SSF-LXH2100SUGD	AllnGaP	Super Ultra Green	574	Green Diffused	5-25	2.2	170	20	60	SSL-LX507F3SUGD
SSF-LXH2100SYD	AllnGaP	Super Yellow	590	Yellow Diffused	5-25	2	300	20	60	SSL-LX507F3SYD
SSF-LXH2100USB	InGaN/SiC	Ultra Super Blue	470	Blue Diffused	5-25	3.5	300	20	60	SSL-LX507F3USB

SSF-LXH2100xx-1 Series

T-5mm Single Level, Dual Ranch, Long Protrusion



FEATURES / OPTIONS

- ▶ State-of-the-Art, Chip Technology
- ▶ Easy Drop-In Board Installation
- ▶ Right Angle to the Board Position
- ▶ Choice of Colors and Lens Finishes
- ▶ Low Current Versions Available
- ▶ Color or Intensity Sorting Available
- ▶ Blinking LED
- ▶ With Internal Resistor for 5V and 12V Operation
- ▶ Black or Gray Holders for High Contrast
- ▶ Color Combinations

APPLICATIONS / USES

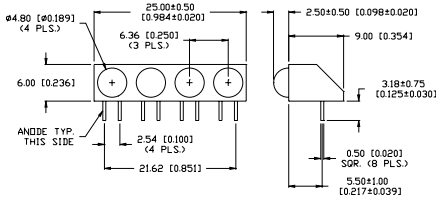
- ▶ Board Level Status Indicators
- ▶ Board Level Fault Indicators
- ▶ Circuit Troubleshooting Indicators
- ▶ Warning/Alarm Lights
- ▶ Backlighting of Overlays
- ▶ Post Lighting Switches and Keypads

Lumex Part Number	Die Material	Emitted Color	Peak (nm)	Lens	Operating Current (mA)	Operating TYP. Vf (V)	Brightness TYP. Mcd	@ mA	View Angle° 2θ	Component LED Used
HIGH BRIGHTNESS										
SSF-LXH2100SID-1	AllnGaP	Super High Intensity Red	636	Red Diffused	5-25	2	700	20	60	SSL-LX509F3SID
SSF-LXH2100SOD-1	AllnGaP	Super Orange	610	Orange Diffused	5-25	2	850	20	60	SSL-LX509F3SOD
SSF-LXH2100SUGD-1	AllnGaP	Super Ultra Green	574	Green Diffused	5-25	2.2	170	20	60	SSL-LX509F3SUGD
SSF-LXH2100SYD-1	AllnGaP	Super Yellow	590	Yellow Diffused	5-25	2	300	20	60	SSL-LX509F3SYD
SSF-LXH2100USB-1	InGaN/SiC	Ultra Super Blue	470	Blue Diffused	5-25	3.5	300	20	60	SSL-LX509F3USB



SSF-LXH400 Series

T-5mm Single Level, Quad Ranch



FEATURES / OPTIONS

- ▶ State-of-the-Art, Chip Technology
- ▶ Easy Drop-In Board Installation
- ▶ Right Angle to the Board Position
- ▶ Choice of Colors and Lens Finishes
- ▶ Low Current Versions Available
- ▶ Color or Intensity Sorting Available
- ▶ Blinking LED
- ▶ With Internal Resistor for 5V and 12V Operation
- ▶ Black or Gray Holders for High Contrast
- ▶ Color Combinations

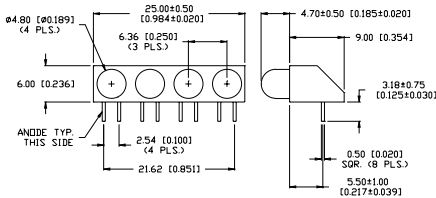
APPLICATIONS / USES

- ▶ Board Level Status Indicators
- ▶ Board Level Fault Indicators
- ▶ Circuit Troubleshooting Indicators
- ▶ Warning/Alarm Lights
- ▶ Backlighting of Overlays
- ▶ Post Lighting Switches and Keypads

Lumex Part Number	Die Material	Emitted Color	Peak (nm)	Lens	Operating Current (mA)	Operating TYP. Vf (V)	Brightness TYP. Mcd	@ mA	View Angle° 2θ	Component LED Used
HIGH BRIGHTNESS										
SSF-LXH400SID	AllnGaP	Super High Intensity Red	636	Red Diffused	5-25	2	700	20	60	SSL-LX507F3SID
SSF-LXH400SOD	AllnGaP	Super Orange	610	Orange Diffused	5-25	2	850	20	60	SSL-LX507F3SOD
SSF-LXH400SUGD	AllnGaP	Super Ultra Green	574	Green Diffused	5-25	2.2	170	20	60	SSL-LX507F3SUGD
SSF-LXH400SYD	AllnGaP	Super Yellow	590	Yellow Diffused	5-25	2	300	20	60	SSL-LX507F3SYD
SSF-LXH400USB	InGaN/SiC	Ultra Super Blue	470	Blue Diffused	5-25	3.5	300	20	60	SSL-LX507F3USB

SSF-LXH400xx-1 Series

T-5mm Single Level, Quad Ranch, Long Protrusion



FEATURES / OPTIONS

- ▶ State-of-the-Art, Chip Technology
- ▶ Easy Drop-In Board Installation
- ▶ Right Angle to the Board Position
- ▶ Choice of Colors and Lens Finishes
- ▶ Low Current Versions Available
- ▶ Color or Intensity Sorting Available
- ▶ Blinking LED
- ▶ With Internal Resistor for 5V and 12V Operation
- ▶ Black or Gray Holders for High Contrast
- ▶ Color Combinations

APPLICATIONS / USES

- ▶ Board Level Status Indicators
- ▶ Board Level Fault Indicators
- ▶ Circuit Troubleshooting Indicators
- ▶ Warning/Alarm Lights
- ▶ Backlighting of Overlays
- ▶ Post Lighting Switches and Keypads

Lumex Part Number	Die Material	Emitted Color	Peak (nm)	Lens	Operating Current (mA)	Operating TYP. Vf (V)	Brightness TYP. Mcd	@ mA	View Angle° 2θ	Component LED Used
HIGH BRIGHTNESS										
SSF-LXH400SID-1	AllnGaP	Super High Intensity Red	636	Red Diffused	5-25	2	700	20	60	SSL-LX509F3SID
SSF-LXH400SOD-1	AllnGaP	Super Orange	610	Orange Diffused	5-25	2	850	20	60	SSL-LX509F3SOD
SSF-LXH400SUGD-1	AllnGaP	Super Ultra Green	574	Green Diffused	5-25	2.2	170	20	60	SSL-LX509F3SUGD
SSF-LXH400SYD-1	AllnGaP	Super Yellow	590	Yellow Diffused	5-25	2	300	20	60	SSL-LX509F3SYD
SSF-LXH400USB-1	InGaN/SiC	Ultra Super Blue	470	Blue Diffused	5-25	3.5	300	20	60	SSL-LX509F3USB



USA/Canada 1-800-278-5666
Asia +886-3-5821124



www.lumex.com

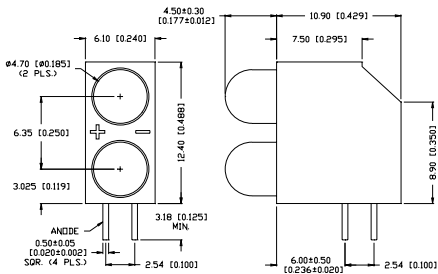


USA/Canada 1-847-359-8904
Asia +886-3-5821154

1
2
3
4
5
6
7
8
9
10
11
12
13
14
15
16
17
18
19
20
21
22
23
24
25
26
27
28
29

SSF-LXH250 Series

T-5mm Dual Tower, Cut Back Holder



FEATURES / OPTIONS

- ▶ State-of-the-Art, Chip Technology
- ▶ Easy Drop-In Board Installation
- ▶ Right Angle to the Board Position
- ▶ Choice of Colors and Lens Finishes
- ▶ Low Current Versions Available
- ▶ Color or Intensity Sorting Available
- ▶ Blinking LED
- ▶ With Internal Resistor for 5V and 12V Operation
- ▶ Black or Gray Holders for High Contrast
- ▶ Color Combinations

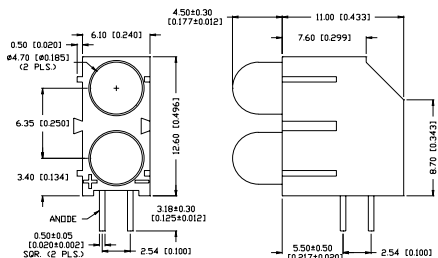
APPLICATIONS / USES

- ▶ Board Level Status Indicators
- ▶ Board Level Fault Indicators
- ▶ Circuit Troubleshooting Indicators
- ▶ Warning/Alarm Lights
- ▶ Backlighting of Overlays
- ▶ Post Lighting Switches and Keypads

Lumex Part Number	Die Material	Emitted Color	Peak (nm)	Lens	Operating Current (mA)	Operating TYP. Vf (V)	Brightness TYP. Mcd	@ mA	View Angle° 2θ	Component LED Used
HIGH BRIGHTNESS										
SSF-LXH250SISID	AlInGaP	Super High Intensity Red	636	Red Diffused	5-25	2	700	20	60	SSL-LX509F3SID
SSF-LXH250SOSOD	AlInGaP	Super Orange	610	Orange Diffused	5-25	2	850	20	60	SSL-LX509F3SOD
SSF-LXH250SUGSUGD	AlInGaP	Super Ultra Green	574	Green Diffused	5-25	2.2	170	20	60	SSL-LX509F3SUGD
SSF-LXH250SYSYD	AlInGaP	Super Yellow	590	Yellow Diffused	5-25	2	300	20	60	SSL-LX509F3SYD
SSF-LXH250USBUSBD	InGaN/SiC	Ultra Super Blue	470	Blue Diffused	5-25	3.5	300	20	60	SSL-LX509F3USBD

SSF-LXHM250 Series

T-5mm Dual Tower Mating, Cut Back Holder



FEATURES / OPTIONS

- ▶ State-of-the-Art, Chip Technology
- ▶ Easy Drop-In Board Installation
- ▶ Right Angle to the Board Position
- ▶ Choice of Colors and Lens Finishes
- ▶ Low Current Versions Available
- ▶ Color or Intensity Sorting Available
- ▶ Blinking LED
- ▶ With Internal Resistor for 5V and 12V Operation
- ▶ Black or Gray Holders for High Contrast
- ▶ Color Combinations
- ▶ Mating Feature Allows for Multiple Positions

APPLICATIONS / USES

- ▶ Board Level Status Indicators
- ▶ Board Level Fault Indicators
- ▶ Circuit Troubleshooting Indicators
- ▶ Warning/Alarm Lights
- ▶ Backlighting of Overlays
- ▶ Post Lighting Switches and Keypads

Lumex Part Number	Die Material	Emitted Color	Peak (nm)	Lens	Operating Current (mA)	Operating TYP. Vf (V)	Brightness TYP. Mcd	@ mA	View Angle° 2θ	Component LED Used
HIGH BRIGHTNESS										
SSF-LXHM250SISID	AlInGaP	Super High Intensity Red	636	Red Diffused	5-25	2	700	20	60	SSL-LX509F3SID
SSF-LXHM250SOSOD	AlInGaP	Super Orange	610	Orange Diffused	5-25	2	850	20	60	SSL-LX509F3SOD
SSF-LXHM250SUGSUGD	AlInGaP	Super Ultra Green	574	Green Diffused	5-25	2.2	170	20	60	SSL-LX509F3SUGD
SSF-LXHM250SYSYD	AlInGaP	Super Yellow	590	Yellow Diffused	5-25	2	300	20	60	SSL-LX509F3SYD
SSF-LXHM250USBUSBD	InGaN/SiC	Ultra Super Blue	470	Blue Diffused	5-25	3.5	300	20	60	SSL-LX509F3USBD



USA/Canada 1-800-278-5666
Asia +886-3-5821124



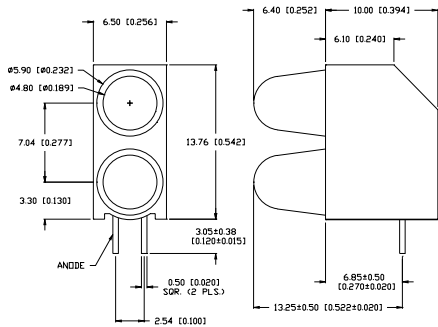
www.lumex.com



USA/Canada 1-847-359-8904
Asia +886-3-5821154

SSF-LXH251 Series

T-5mm Dual Tower, Tapered LED



FEATURES / OPTIONS

- ▶ State-of-the-Art, Chip Technology
- ▶ Easy Drop-In Board Installation
- ▶ Right Angle to the Board Position
- ▶ Choice of Colors and Lens Finishes
- ▶ Low Current Versions Available
- ▶ Color or Intensity Sorting Available
- ▶ Blinking LED
- ▶ With Internal Resistor for 5V and 12V Operation
- ▶ Black or Gray Holders for High Contrast
- ▶ Color Combinations

APPLICATIONS / USES

- ▶ Board Level Status Indicators
- ▶ Board Level Fault Indicators
- ▶ Circuit Troubleshooting Indicators
- ▶ Warning/Alarm Lights
- ▶ Backlighting of Overlays
- ▶ Post Lighting Switches and Keypads

Lumex Part Number	Die Material	Emitted Color	Peak (nm)	Lens	Operating Current (mA)	Operating TYP. Vf (V)	Brightness TYP. Mcd	@ mA	View Angle° 2 θ	Component LED Used
HIGH BRIGHTNESS										
SSF-LXH251SISID	AllnGaP	Super High Intensity Red	636	Red Diffused	5-25	2	700	20	60	SSL-LX50493SID
SSF-LXH251SOSOD	AllnGaP	Super Orange	610	Orange Diffused	5-25	2	850	20	60	SSL-LX50493SOD
SSF-LXH251SUGSUGD	AllnGaP	Super Ultra Green	574	Green Diffused	5-25	2.2	170	20	60	SSL-LX50493SUGD
SSF-LXH251SYSYD	AllnGaP	Super Yellow	590	Yellow Diffused	5-25	2	300	20	60	SSL-LX50493SYD
SSF-LXH251USBUSBD	InGaN/SiC	Ultra Super Blue	470	Blue Diffused	5-25	3.5	300	20	60	SSL-LX50493USBD



USA/Canada 1-800-278-5666
Asia +886-3-5821124



www.lumex.com



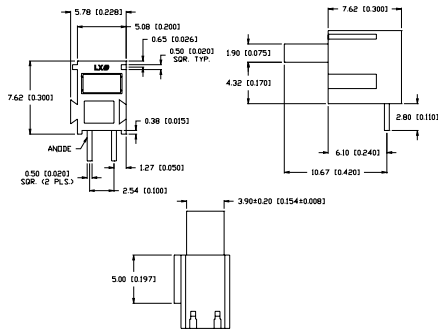
USA/Canada 1-847-359-8904
Asia +886-3-5821154

1
2
3
4
5
6
7
8
9
10
11
12
13
14
15
16
17
18
19
20
21
22
23
24
25
26
27
28
29

1
2
3
4
5
6
7
8
9
10
11
12
13
14
15
16
17
18
19
20
21
22
23
24
25
26
27
28
29

SSF-LXHM2473 Series

2x4 Single Level, Mating



FEATURES / OPTIONS

- ▶ State-of-the-Art, Chip Technology
- ▶ Easy Drop-In Board Installation
- ▶ Right Angle to the Board Position
- ▶ Choice of Colors and Lens Finishes
- ▶ Low Current Versions Available
- ▶ Color or Intensity Sorting Available
- ▶ Blinking LED
- ▶ With Internal Resistor for 5V and 12V Operation
- ▶ Black or Gray Holders for High Contrast
- ▶ Color Combinations
- ▶ Mating Feature Allows for Multiple Positions

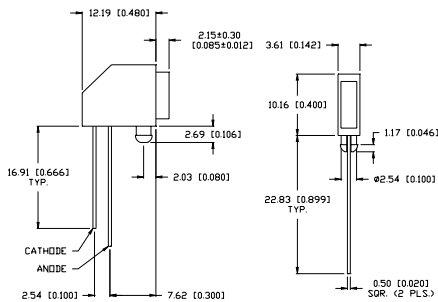
APPLICATIONS / USES

- ▶ Board Level Status Indicators
- ▶ Board Level Fault Indicators
- ▶ Circuit Troubleshooting Indicators
- ▶ Warning/Alarm Lights
- ▶ Backlighting of Overlays
- ▶ Post Lighting Switches and Keypads

Lumex Part Number	Die Material	Emitted Color	Peak (nm)	Lens	Operating Current (mA)	Operating TYP. Vf (V)	Brightness TYP. Mcd	@ mA	View Angle° 2θ	Component LED Used
HIGH BRIGHTNESS										
SSF-LXHM2473SID	AllnGaP	Super High Intensity Red	636	Red Diffused	5-25	2	45	20	120	SSL-LX2473SID
SSF-LXHM2473SOD	AllnGaP	Super Orange	610	Orange Diffused	5-25	2	45	20	120	SSL-LX2473SOD
SSF-LXHM2473SUGD	AllnGaP	Super Ultra Green	574	Green Diffused	5-25	2.2	25	20	120	SSL-LX2473SUGD
SSF-LXHM2473SYD	AllnGaP	Super Yellow	590	Yellow Diffused	5-25	2	45	20	120	SSL-LX2473SYD
SSF-LXHM2473USBD	InGaN/SiC	Ultra Super Blue	470	Blue Diffused	5-25	3.5	30	20	120	SSL-LX2473USBD

SSF-LXH25780 Series

2.5x7 Single Level, Vertical LED



FEATURES / OPTIONS

- ▶ State-of-the-Art, Chip Technology
- ▶ Easy Drop-In Board Installation
- ▶ Right Angle to the Board Position
- ▶ Choice of Colors and Lens Finishes
- ▶ Low Current Versions Available
- ▶ Color or Intensity Sorting Available
- ▶ Blinking LED
- ▶ With Internal Resistor for 5V and 12V Operation
- ▶ Black or Gray Holders for High Contrast

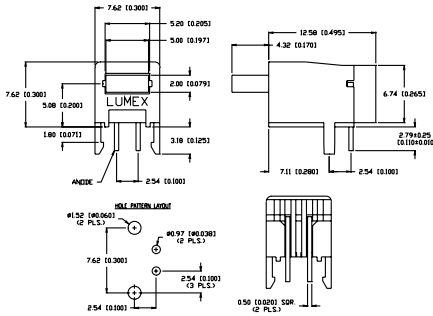
APPLICATIONS / USES

- ▶ Board Level Status Indicators
- ▶ Board Level Fault Indicators
- ▶ Circuit Troubleshooting Indicators
- ▶ Warning/Alarm Lights
- ▶ Backlighting of Overlays
- ▶ Post Lighting Switches and Keypads

Lumex Part Number	Die Material	Emitted Color	Peak (nm)	Lens	Operating Current (mA)	Operating TYP. Vf (V)	Brightness TYP. Mcd	@ mA	View Angle° 2θ	Component LED Used
HIGH BRIGHTNESS										
SSF-LXH25780SID	AllnGaP	Super High Intensity Red	636	Red Diffused	5-25	2	70	20	110	SSL-LX25783SID
SSF-LXH25780SOD	AllnGaP	Super Orange	610	Orange Diffused	5-25	2	70	20	110	SSL-LX25783SOD
SSF-LXH25780SUGD	AllnGaP	Super Ultra Green	574	Green Diffused	5-25	2.2	40	20	110	SSL-LX25783SUGD
SSF-LXH25780SYD	AllnGaP	Super Yellow	590	Yellow Diffused	5-25	2	70	20	110	SSL-LX25783SYD
SSF-LXH25780USBD	InGaN/SiC	Ultra Super Blue	470	Blue Diffused	5-25	3.5	50	20	110	SSL-LX25783USBD

SSF-LXH2579 Series

2x5 Horizontal 2-Leaded LED



FEATURES / OPTIONS

- ▶ State-of-the-Art, Chip Technology
- ▶ Easy Drop-In Board Installation
- ▶ Right Angle to the Board Position
- ▶ Choice of Colors and Lens Finishes
- ▶ Low Current Versions Available
- ▶ Color or Intensity Sorting Available
- ▶ Blinking LED
- ▶ With Internal Resistor for 5V and 12V Operation
- ▶ Black or Gray Holders for High Contrast

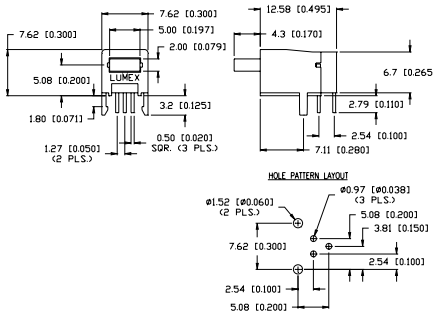
APPLICATIONS / USES

- ▶ Board Level Status Indicators
- ▶ Board Level Fault Indicators
- ▶ Circuit Troubleshooting Indicators
- ▶ Warning/Alarm Lights
- ▶ Backlighting of Overlays
- ▶ Post Lighting Switches and Keypads

Lumex Part Number	Die Material	Emitted Color	Peak (nm)	Lens	Operating Current (mA)	Operating TYP. Vf (V)	Brightness TYP. Mcd	@ mA	View Angle° 2θ	Component LED Used
HIGH BRIGHTNESS										
SSF-LXH2579SID	AllnGaP	Super High Intensity Red	636	Red Diffused	5-25	2	100	20	110	SSL-LX2573SID
SSF-LXH2579SOD	AllnGaP	Super Orange	610	Orange Diffused	5-25	2	100	20	110	SSL-LX2573SOD
SSF-LXH2579SUGD	AllnGaP	Super Ultra Green	574	Green Diffused	5-25	2.2	50	20	110	SSL-LX2573SUGD
SSF-LXH2579SYD	AllnGaP	Super Yellow	590	Yellow Diffused	5-25	2	100	20	110	SSL-LX2573SYD
SSF-LXH2579USBD	InGaN/SiC	Ultra Super Blue	470	Blue Diffused	5-25	3.5	60	20	110	SSL-LX2573USBD

SSF-LXH2579 Series

2x5 Horizontal 3-Leaded LED, Bi-Color



FEATURES / OPTIONS

- ▶ State-of-the-Art, Chip Technology
- ▶ Easy Drop-In Board Installation
- ▶ Right Angle to the Board Position
- ▶ Choice of Colors and Lens Finishes
- ▶ Low Current Versions Available
- ▶ Color or Intensity Sorting Available
- ▶ Blinking LED
- ▶ With Internal Resistor for 5V and 12V Operation
- ▶ Black or Gray Holders for High Contrast
- ▶ Common Anode Version

APPLICATIONS / USES

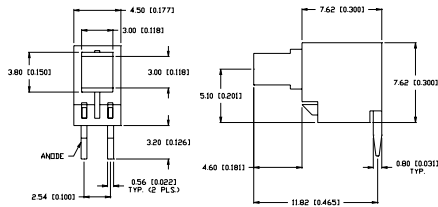
- ▶ Board Level Status Indicators
- ▶ Board Level Fault Indicators
- ▶ Circuit Troubleshooting Indicators
- ▶ Warning/Alarm Lights
- ▶ Backlighting of Overlays
- ▶ Post Lighting Switches and Keypads

Lumex Part Number	Die Material	Emitted Color	Peak (nm)	Lens	Operating Current (mA)	Operating TYP. Vf (V)	Brightness TYP. Mcd	@ mA	View Angle° 2θ	Component LED Used
SSF-LXH2579SISUGW	AllnGaP	Super High Intensity Red	636	Milky White	5-25	2	50	20	60	SSL-LX2579SISUGW
	AllnGaP	Super Ultra Green	574	Diffused	5-25	2.2	30	20		
SSF-LXH2579SISYW	AllnGaP	Super High Intensity Red	636	Milky White	5-25	2	50	20	60	SSL-LX2579SISYW
	AllnGaP	Super Yellow	590	Diffused	5-25	2	50	20		
SSF-LXH2579SYSUGW	AllnGaP	Super Yellow	590	Milky White	5-25	2	50	20	60	SSL-LX2579SYSUGW
	AllnGaP	Super Ultra Green	574	Diffused	5-25	2.2	30	20		



SSF-LXH4RA33 Series

3x3mm Square, Relampable



FEATURES / OPTIONS

- ▶ State-of-the-Art, Chip Technology
- ▶ Easy Drop-In Board Installation
- ▶ Right Angle to the Board Position
- ▶ Choice of Colors and Lens Finishes
- ▶ Low Current Versions Available
- ▶ Color or Intensity Sorting Available
- ▶ Relampable LED Socket
- ▶ Blinking LED
- ▶ With Internal Resistor for 5V and 12V Operation
- ▶ Black or Gray Holders for High Contrast

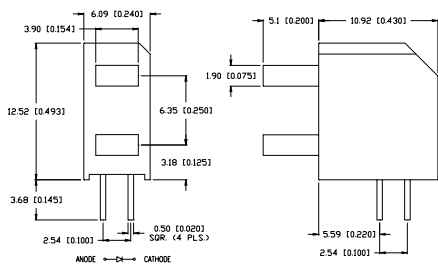
APPLICATIONS / USES

- ▶ Board Level Status Indicators
- ▶ Board Level Fault Indicators
- ▶ Circuit Troubleshooting Indicators
- ▶ Warning/Alarm Lights
- ▶ Backlighting of Overlays
- ▶ Post Lighting Switches and Keypads

Lumex Part Number	Die Material	Emitted Color	Peak (nm)	Lens	Operating Current (mA)	Operating TYP. Vf (V)	Brightness TYP. Mcd	@ mA	View Angle° 2θ	Component LED Used
HIGH BRIGHTNESS										
SSF-LXH4RA33SID	AllnGaP	Super High Intensity Red	636	Red Diffused	5-25	2	100	20	80	SSL-LX3353SID
SSF-LXH4RA33SOD	AllnGaP	Super Orange	610	Orange Diffused	5-25	2	100	20	80	SSL-LX3353SOD
SSF-LXH4RA33SUGD	AllnGaP	Super Ultra Green	574	Green Diffused	5-25	2.2	50	20	80	SSL-LX3353SUGD
SSF-LXH4RA33SYD	AllnGaP	Super Yellow	590	Yellow Diffused	5-25	2	100	20	80	SSL-LX3353SYD
SSF-LXH4RA33USBD	InGaN/SiC	Ultra Super Blue	470	Blue Diffused	5-25	3.5	60	20	80	SSL-LX3353USBD

SSF-H2247 Series

2X4 Dual Level



FEATURES / OPTIONS

- ▶ State-of-the-Art, Chip Technology
- ▶ Easy Drop-In Board Installation
- ▶ Right Angle to the Board Position
- ▶ Choice of Colors and Lens Finishes
- ▶ Low Current Versions Available
- ▶ Color or Intensity Sorting Available
- ▶ Blinking LED
- ▶ With Internal Resistor for 5V and 12V Operation
- ▶ Black or Gray Holders for High Contrast
- ▶ Color Combinations

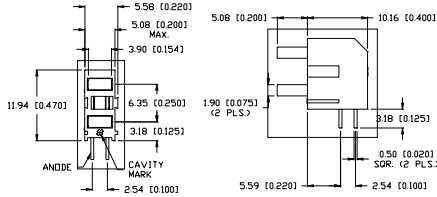
APPLICATIONS / USES

- ▶ Board Level Status Indicators
- ▶ Board Level Fault Indicators
- ▶ Circuit Troubleshooting Indicators
- ▶ Warning/Alarm Lights
- ▶ Backlighting of Overlays
- ▶ Post Lighting Switches and Keypads

Lumex Part Number	Die Material	Emitted Color	Peak (nm)	Lens	Operating Current (mA)	Operating TYP. Vf (V)	Brightness TYP. Mcd	@ mA	View Angle° 2θ	Component LED Used
HIGH BRIGHTNESS										
SSF-H2247SID	AllnGaP	Super High Intensity Red	636	Red Diffused	5-25	2	100	20	110	SSL-LX2473SID
SSF-H2247SOD	AllnGaP	Super Orange	610	Orange Diffused	5-25	2	100	20	110	SSL-LX2473SOD
SSF-H2247SUGD	AllnGaP	Super Ultra Green	574	Green Diffused	5-25	2.2	50	20	110	SSL-LX2473SUGD
SSF-H2247SYD	AllnGaP	Super Yellow	590	Yellow Diffused	5-25	2	100	20	110	SSL-LX2473SYD
SSF-H2247USBD	InGaN/SiC	Ultra Super Blue	470	Blue Diffused	5-25	3.5	60	20	110	SSL-LX2473USBD

SSF-LXHM2247 Series

2x4 Dual Level, Mating



FEATURES / OPTIONS

- ▶ State-of-the-Art, Chip Technology
- ▶ Easy Drop-In Board Installation
- ▶ Right Angle to the Board Position
- ▶ Choice of Colors and Lens Finishes
- ▶ Low Current Versions Available
- ▶ Color or Intensity Sorting Available
- ▶ Blinking LED
- ▶ With Internal Resistor for 5V and 12V Operation
- ▶ Black or Gray Holders for High Contrast
- ▶ Color Combinations
- ▶ Mating Feature Allows for Multiple Positions

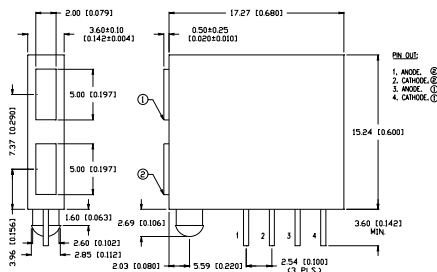
APPLICATIONS / USES

- ▶ Board Level Status Indicators
- ▶ Board Level Fault Indicators
- ▶ Circuit Troubleshooting Indicators
- ▶ Warning/Alarm Lights
- ▶ Backlighting of Overlays
- ▶ Post Lighting Switches and Keypads

Lumex Part Number	Die Material	Emitted Color	Peak (nm)	Lens	Operating Current (mA)	Operating TYP. Vf (V)	Brightness TYP. Mcd	@ mA	View Angle° 2θ	Component LED Used
HIGH BRIGHTNESS										
SSF-LXHM2247SISID	AllnGaP	Super High Intensity Red	636	Red Diffused	5-25	2	100	20	110	SSL-LX2473SID
SSF-LXHM2247SOSOD	AllnGaP	Super Orange	610	Orange Diffused	5-25	2	100	20	110	SSL-LX2473SOD
SSF-LXHM2247SUGUGD	AllnGaP	Super Ultra Green	574	Green Diffused	5-25	2.2	50	20	110	SSL-LX2473SUGD
SSF-LXHM2247SYSYD	AllnGaP	Super Yellow	590	Yellow Diffused	5-25	2	100	20	110	SSL-LX2473SYD
SSF-LXHM2247USBSBD	InGaN/SiC	Ultra Super Blue	470	Blue Diffused	5-25	3.5	60	20	110	SSL-LX2473USBD

SSF-LXH22573 Series

2x5 Dual Piggy Back Unit



FEATURES / OPTIONS

- ▶ State-of-the-Art, Chip Technology
- ▶ Easy Drop-In Board Installation
- ▶ Right Angle to the Board Position
- ▶ Choice of Colors and Lens Finishes
- ▶ Low Current Versions Available
- ▶ Color or Intensity Sorting Available
- ▶ Blinking LED
- ▶ With Internal Resistor for 5V and 12V Operation
- ▶ Black or Gray Holders for High Contrast
- ▶ Color Combinations

APPLICATIONS / USES

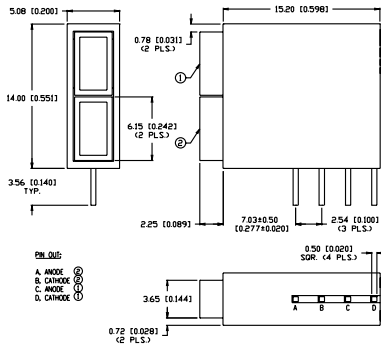
- ▶ Board Level Status Indicators
- ▶ Board Level Fault Indicators
- ▶ Circuit Troubleshooting Indicators
- ▶ Warning/Alarm Lights
- ▶ Backlighting of Overlays
- ▶ Post Lighting Switches and Keypads

Lumex Part Number	Die Material	Emitted Color	Peak (nm)	Lens	Operating Current (mA)	Operating TYP. Vf (V)	Brightness TYP. Mcd	@ mA	View Angle° 2θ	Component LED Used
HIGH BRIGHTNESS										
SSF-LXH22573SISID	AllnGaP	Super High Intensity Red	636	Red Diffused	5-25	2	100	20	110	SSL-LX2573SID
SSF-LXH22573SOSOD	AllnGaP	Super Orange	610	Orange Diffused	5-25	2	100	20	110	SSL-LX2573SOD
SSF-LXH22573SUGUGD	AllnGaP	Super Ultra Green	574	Green Diffused	5-25	2.2	65	20	110	SSL-LX2573SUGD
SSF-LXH22573SYSYD	AllnGaP	Super Yellow	590	Yellow Diffused	5-25	2	100	20	110	SSL-LX2573SYD
SSF-LXH22573USBSBD	InGaN/SiC	Ultra Super Blue	470	Blue Diffused	5-25	3.5	80	20	110	SSL-LX2573USBD



SSF-LXH20049 Series

4x6 Dual Level, Piggy Back Unit



FEATURES / OPTIONS

- ▶ State-of-the-Art, Chip Technology
- ▶ Easy Drop-In Board Installation
- ▶ Right Angle to the Board Position
- ▶ Choice of Colors and Lens Finishes
- ▶ Low Current Versions Available
- ▶ Color or Intensity Sorting Available
- ▶ Blinking LED
- ▶ With Internal Resistor for 5V and 12V Operation
- ▶ Black or Gray Holders for High Contrast
- ▶ Color Combinations
- ▶ Straight LEDs

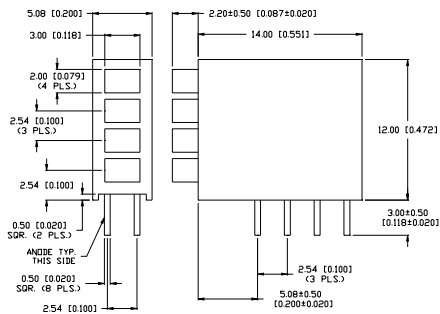
APPLICATIONS / USES

- ▶ Board Level Status Indicators
- ▶ Board Level Fault Indicators
- ▶ Circuit Troubleshooting Indicators
- ▶ Warning/Alarm Lights
- ▶ Backlighting of Overlays
- ▶ Post Lighting Switches and Keypads

Lumex Part Number	Die Material	Emitted Color	Peak (nm)	Lens	Operating Current (mA)	Operating TYP. Vf (V)	Brightness TYP. Mcd	@ mA	View Angle° 2θ	Component LED Used
HIGH BRIGHTNESS										
SSF-LXH20049SISID	AllInGaP	Super High Intensity Red	636	Red Diffused	5-25	2	100	20	100	SSL-LX4673SID-LA20
SSF-LXH20049SOSOD	AllInGaP	Super Orange	610	Orange Diffused	5-25	2	100	20	100	SSL-LX4673SOD-LA20
SSF-LXH20049SUGUGD	AllInGaP	Super Ultra Green	574	Green Diffused	5-25	2.2	50	20	100	SSL-LX4673SUGD-LA20
SSF-LXH20049SYSYD	AllInGaP	Super Yellow	590	Yellow Diffused	5-25	2	100	20	100	SSL-LX4673SYD-LA20
SSF-LXH20049USBSBD	InGaN/SiC	Ultra Super Blue	470	Blue Diffused	5-25	3.5	60	20	100	SSL-LX4673USB-LA20

SSF-LXH534 Series

2x3mm Quad Tower



FEATURES / OPTIONS

- ▶ State-of-the-Art, Chip Technology
- ▶ Easy Drop-In Board Installation
- ▶ Right Angle to the Board Position
- ▶ Choice of Colors and Lens Finishes
- ▶ Low Current Versions Available
- ▶ Color or Intensity Sorting Available
- ▶ Blinking LED
- ▶ With Internal Resistor for 5V and 12V Operation
- ▶ Black or Gray Holders for High Contrast
- ▶ Color Combinations

APPLICATIONS / USES

- ▶ Board Level Status Indicators
- ▶ Board Level Fault Indicators
- ▶ Circuit Troubleshooting Indicators
- ▶ Warning/Alarm Lights
- ▶ Backlighting of Overlays
- ▶ Post Lighting Switches and Keypads

Lumex Part Number	Die Material	Emitted Color	Peak (nm)	Lens	Operating Current (mA)	Operating TYP. Vf (V)	Brightness TYP. Mcd	@ mA	View Angle° 2θ	Component LED Used
HIGH BRIGHTNESS										
SSF-LXH534SID	AllInGaP	Super High Intensity Red	636	Red Diffused	5-25	2	120	20	100	SSL-LX2344SID
SSF-LXH534SOD	AllInGaP	Super Orange	610	Orange Diffused	5-25	2	120	20	100	SSL-LX2344SOD
SSF-LXH534SUGD	AllInGaP	Super Ultra Green	574	Green Diffused	5-25	2.2	65	20	100	SSL-LX2344SUGD
SSF-LXH534SYD	AllInGaP	Super Yellow	590	Yellow Diffused	5-25	2	120	20	100	SSL-LX2344SYD
SSF-LXH534USBD	InGaN/SiC	Ultra Super Blue	470	Blue Diffused	5-25	3.5	80	20	100	SSL-LX2344USBD



USA/Canada 1-800-278-5666
Asia +886-3-5821124



www.lumex.com



USA/Canada 1-847-359-8904
Asia +886-3-5821154