

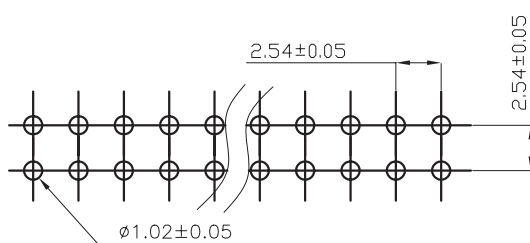
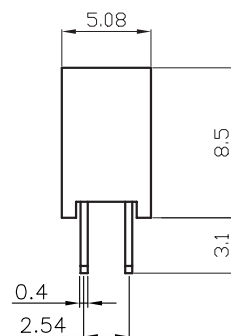
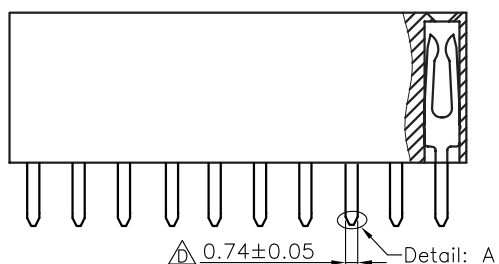
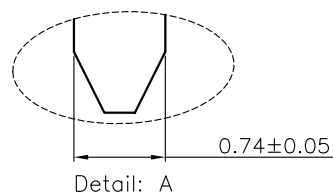
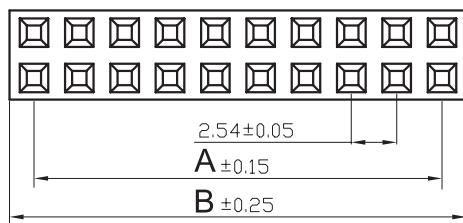
1

2

3

4

5



TECHNICAL CHARACTERISTICS

MATERIAL
INSULATOR: PBT
COLOR: BLACK
CONTACT MATERIAL: COPPER ALLOY
CONTACT TYPE: STAMPED
CONTACT PLATING: GOLD
QUALITY CLASS: 3 AS PER CECC 75 301-802
PITCH: 2.54MM

ENVIRONMENTAL
OPERATING TEMPERATURE: -40 UP TO 125°C
FLAMABILITY RATING: UL94-V0
COMPLIANCE: LEAD FREE AND ROHS

ELECTRICAL
CURRENT RATING: 3A
WORKING VOLTAGE: 250V AC
INSULATOR RESISTANCE: >1000 MOHM
DIELECTRIC WITHSTANDING VOLTAGE: 500V AC/MN
CONTACT RESISTANCE: 20 mOHM MAX

SOLDERING
WAVE PROCESS ONLY

PACKAGING
TRAY

DIMENSION
A = 2.54x (NB. PIN / 2 - 1)
B = 2.54x (NB. PIN / 2) + 0.5

RoHS Compliant

G				PROJECTION: 	GENERAL TOLERANCE .X = +/- 0.2 .XX = +/- 0.15	
F						
E	23-NOV-07	MODIFICATIONS	EC			
D	19-DEC-06	0.74MM PINS	JP			
C	30-MAR-04	LEAD FREE	JP	APPROVAL: RJ	UNIT: MM	DESCRIPTION: 2.54MM DUAL SOCKET HEADER
B	10-MAR-04		JP		SCALE:	
A	11-JUN-02	PDF	JP		SHEET: 1/1	WERI PART NO: 6130 xx 21821
REV	DATE	FILE	BY		DRAW: PEARL	

SIZE

A4