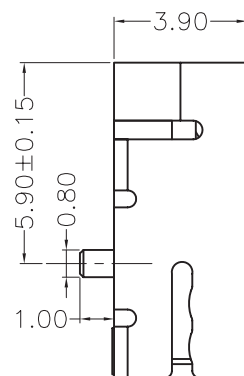
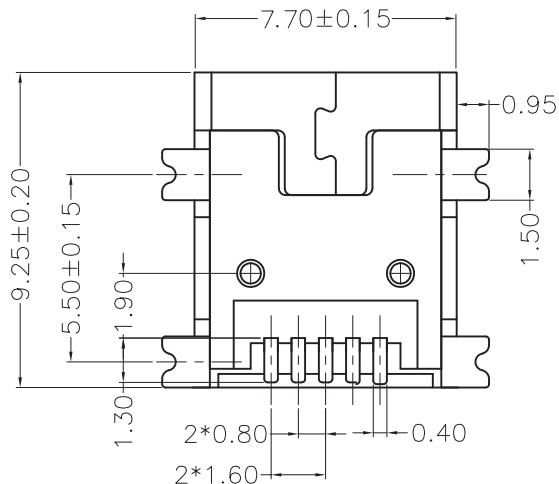


PCB LAYOUT - COMPONENT VIEW



TECHNICAL CHARACTERISTICS

MATERIAL
 INSULATOR: LCP
 FLAMABILITY RATING: UL94-V0
 COLOR: BLACK
 CONTACT MATERIAL: COPPER ALLOY
 CONTACT TYPE: STAMPED
 CONTACT PLATING: SELECTIVE GOLD
 SHIELDING: BRASS NI PLATED
 QUALITY CLASS: 1500 MATING CYCLES

ENVIRONMENTAL
 OPERATING TEMPERATURE: -40 UP TO 105°C
 COMPLIANCE: LEAD FREE AND ROHS

ELECTRICAL
 CURRENT RATING: 1A
 WORKING VOLTAGE: 30V
 INSULATOR RESISTANCE: >1000 MOHM
 DIELECTRIC WITHSTANDING VOLTAGE: 750V AC/MN
 CONTACT RESISTANCE: 20 mOHM MAX

STANDARD

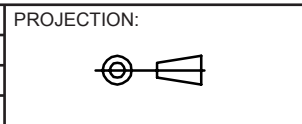
CERTIFIED: E323964 / MODEL NUMBER 651 005 161 21

SOLDERING
 REFLOW PROCESS ONLY

PACKAGING
 TAPE & REEL WITH MYLAR

RoHS Compliant

G			
F			
E	29-APR-11	PACKAGING	GG
D	06-APR-11	DIMENSION	GG
C	15-FEB-10	PACKAGING T & R	JP
B	09-DEC-09	STANDARD	JP
A	28-OCT-09	PINNING	JP
REV	DATE	FILE	BY



GENERAL TOLERANCE
 .X = +/- 0.2
 .XX = +/- 0.15

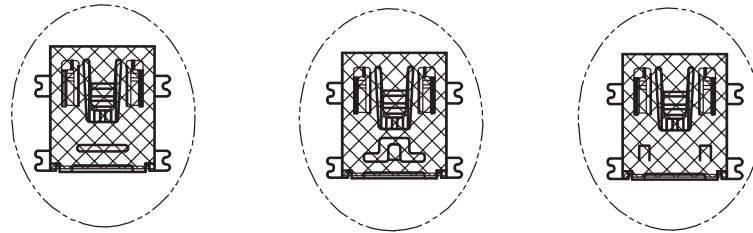


APPROVAL: RJ

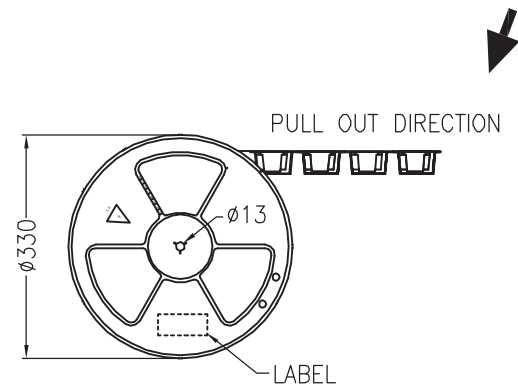
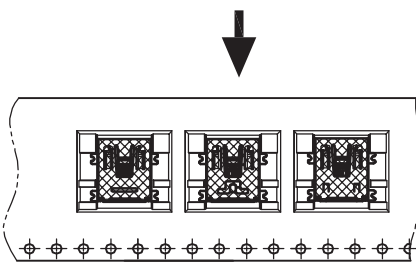
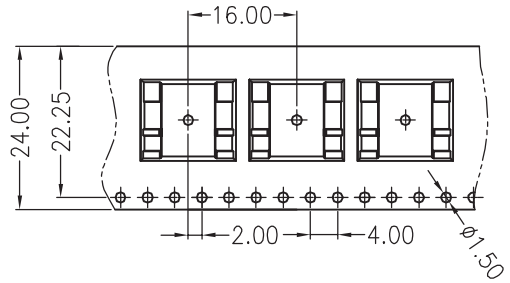
UNIT: MM
 SCALE:
 SHEET: 1/2
 DRAW: PEARL

DESCRIPTION: MINI USB SMT TYPE B 5 CONTACTS
 WERI PART NO: 651 005 161 21

SIZE
A4



7.60 9.05
Mylar:T=0.04mm



RoHS Compliant				PROJECTION: 	GENERAL TOLERANCE .X = +/- 0.2 .XX = +/- 0.15	
				APPROVAL: RJ	UNIT: MM	DESCRIPTION: MINI USB SMT TYPE B 5 CONTACTS
					SCALE:	
					SHEET: 2/2	WERI PART NO: 651 005 161 21
REV	DATE	FILE	BY		DRAW: PEARL	
						SIZE A4

A
B
C
D