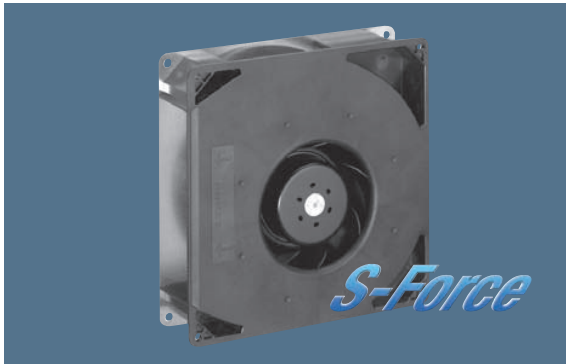


max. 444 m³/h

DC centrifugal fans

Series RG 160 NTD 220 x 220 x 56 mm



Highlights:

- Control inputs, alarm and speed signals available on request.
- 3-phase fan drive with high degree of running smoothness.
- Very high pressure build-up.
- Backward curved impeller.

General characteristics:

- Fibreglass-reinforced plastic scroll housing and impeller; Housing base of sheet steel.
- Fully integrated electronic commutation.
- Direction of air flow: axial air intake, centrifugal air exhaust out of the outlet.
- Connection via single strands AWG 22, TR 64. Bared and tin-plated.
- 48 V Model: Flat plug 6.3 x 0.8 mm for protective earth.
- Mass: 1.4 kg.

Nominal data		Air flow		Nominal voltage	Voltage range	Sound power level	Sinter sleeve bearings Ball bearings	Power input	Nominal speed	Temperature range	Service life L ₁₀ (40 °C) ebm-papst Standard	Service life L ₁₀ (T _{max}) ebm-papst Standard	Life expectancy L ₁₀ Δ (40 °C) see P. 15	Curve	Specials
Type	m ³ /h	CFM	VDC	VDC	Bel(A)	■ / ■	Watts	RPM	°C	Hours	Hours	Hours	P.		
min. max.	RG 160-28/14 NTD...	59 308	16,4 85,6	24	16...28	— 7,5	2,0 64,0	800 4 200	-20...+60	55 000 / 27 500	110 000	1 2			
	RG 160-28/14 NTD	308	85,6	24	16...28	7,5	64,0	4 200	-20...+60	55 000 / 35 000	110 000	2			
	RG 160-28/14 NTDH	370	217,8	24	16...28	7,8	101,0	5 000	-20...+60	50 000 / 32 500	102 500	3			
min. max.	RG 160-28/18 NTD...	59 308	16,4 85,6	48	38...57	— 7,5	2,0 59,0	800 4 200	-20...+70	55 000 / 27 500	110 000	1 2			
	NEW RG 160-28/18/ 2NTDHPH*	444	261,2	48	36...60	8,5	159	6 000	-20...+65	40 000 / 22 500	80 000	4			

Models RG 160-28/14 NTD... and RG 160-28/18 NTD... are available in customer-specific, custom-developed variants only.
 The data specified here are technically feasible benchmark values. The fans can be specially adapted to your application with signal outputs and control inputs.
 *The specific service life is valid when an external capacitor is wired between the plus and minus strands.
 Please note the wiring suggestion.

