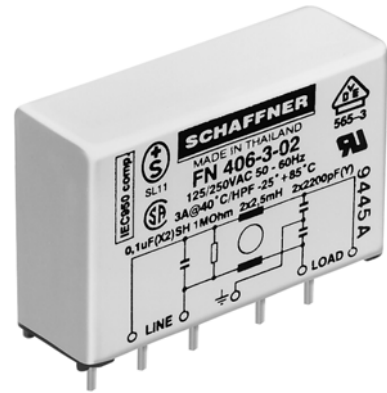


# Ultra-compact EMC filter

# FN 406

- 0.5-8.4A current ratings
- Aluminium case
- Very compact PCB-mounting design
- Low profile
- Nennströme von 0.5 bis 8.4A
- Aluminiumgehäuse
- Sehr kompaktes Printmontage-Design
- Raumsparender Aufbau
- Courants de service de 0.5 à 8.4A
- Boîtier en aluminium
- Conception très compact pour montage sur circuit imprimé
- Hauteur réduite



## Filter selection table

Choose the family **FN xxx** with the required current rating and features, and add **/??** to determine input/output (line/load) connection style. Example: FN 406-6/02 is a 6A filter with pin connections.

## Approvals



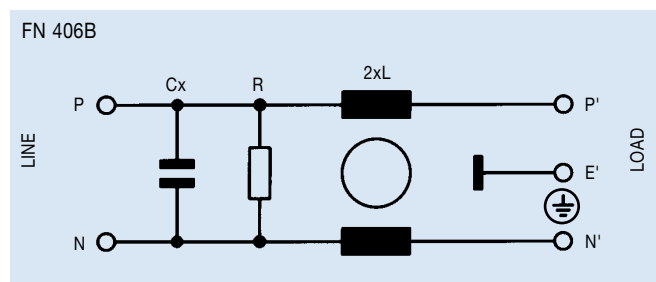
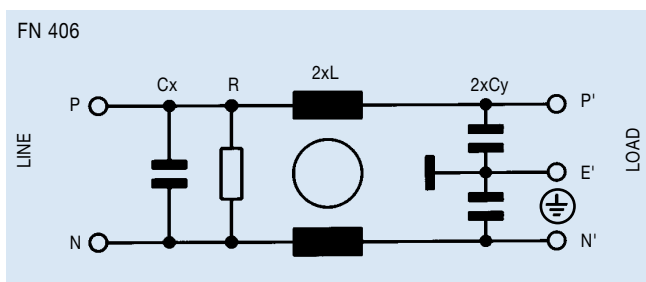
Family	Connections	Current ratings A at 40°C (25°)	Inductance L mH	Housing	Weight g
FN 406 -0.5 /??	/02	0.5 (0.6)	24	A6	36
FN 406 -1 /??	/02	1 (1.2)	12	A6	36
FN 406 -3 /??	/02	3 (3.5)	2.5	A6	36
FN 406 -6 /??	/02	6 (6.9)	0.78	A6	36
FN 406 -8.4 /??	/02	8.4 (9.6)	0.3	A6	36

## Additional specifications

Filter type	Capacitance		Res. R MΩ	Maximum leakage μA/phase	Maximum operating voltage		Operating frequency Hz	Hipot test voltage	
	Cx nF	Cy nF			VAC	Hz		PN→E VAC	P→N VAC
Standard types	100	2.2	1	190	250	50/60	DC to 400	2000	1700
B types (medical)	100		1	2	250	50/60	DC to 400	2500	1700

MTBF at 40°C, 230V, per Mil-HB-217F: 1,900,000 hours.

## Electrical schematics

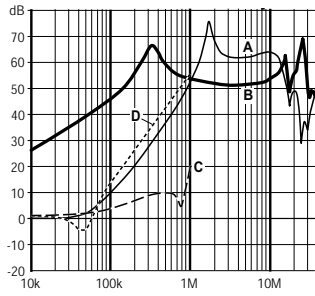


See tables for component values.

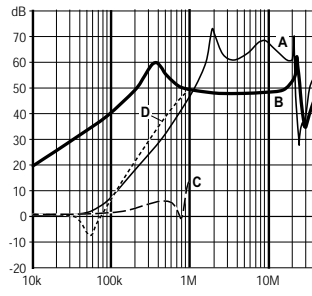
## FN 406 insertion loss

Per CISPR 17; A = 50Ω/50Ω sym, B = 50Ω/50Ω asym, C = 0.1Ω/100Ω sym, D = 100Ω/0.1Ω sym

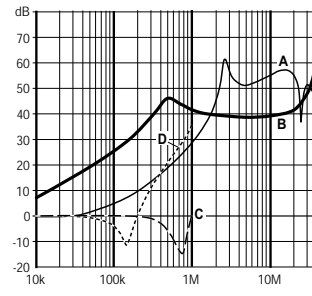
### 0.5 amp types



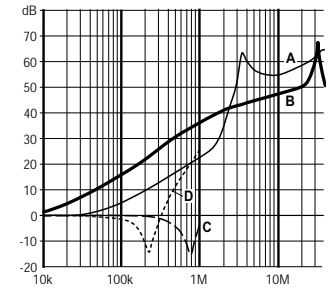
### 1 amp types



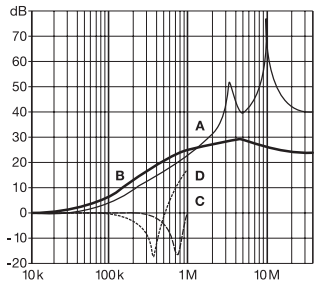
### 3 amp types



### 6 amp types



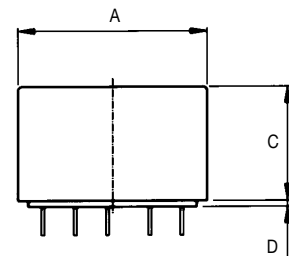
### 8.4 amp types



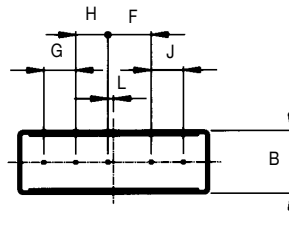
## Mechanical data

		Tol. mm
<b>A</b>	45	± 0.2
<b>B</b>	15	± 0.5
<b>C</b>	28	± 0.3
<b>D</b>	1.5	± 0.3
<b>F</b>	10.16	± 0.1
<b>G</b>	7.62	± 0.1
<b>H</b>	7.62	± 0.1
<b>J</b>	7.62	± 0.1
<b>L</b>	1.27	-

### Side view



### Bottom view



All dimensions in mm; 1 inch = 25.4 mm